

COMMERCIAL LOAD SUMMARY table with columns: BUILDING AREA (5,687 SQ FT), VOLTAGE (208Y/120V, 3PH, 4W), LOAD DESCRIPTION, CONNECTED LOAD (VA), DEMAND FACTOR, DEMAND LOAD (VA). Rows include lighting, power & HVAC, and miscellaneous equipment.

PANELBOARD AFC VALUES ARE BASED ON AN ASSUMED TRANSFORMER AFC VALUE OF 55,000A AND A FEEDER LENGTH OF 125 FT. CONTRACTOR TO FIELD VERIFY ALL ASSUMPTIONS LISTED AND ALERT ENGINEER IF ACTUAL INFORMATION DIFFERS.

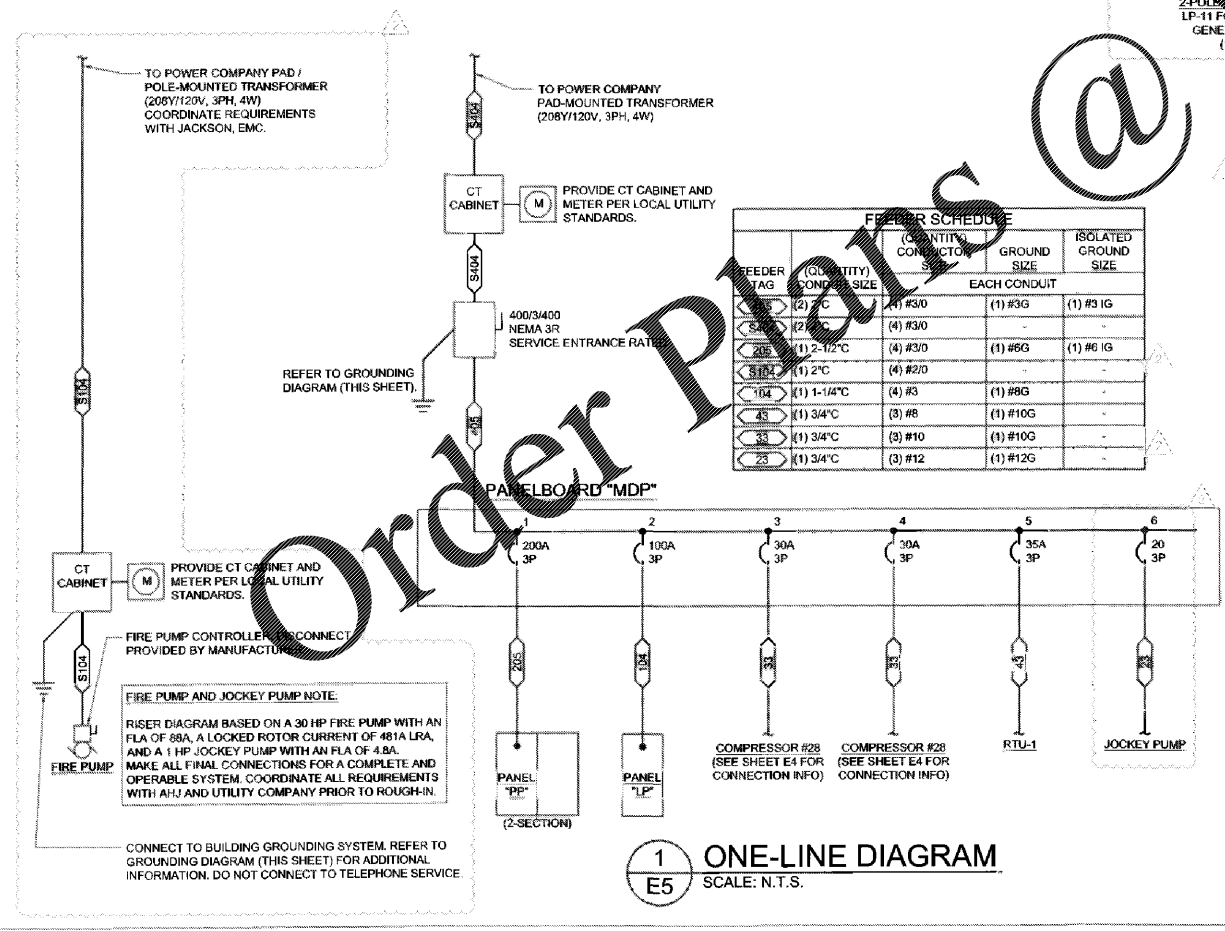
SERVICE DISCONNECT SIZED BASED ON LOAD SUMMARY PER THE NEC.

PANELBOARD MDP table with columns: BUS AMPS (400A MLO), LOCATION (UTILITY AREA 107), GROUND BUS (ISOL. GROUND BUS). Rows include circuit descriptions like SALES POD IG RCPT, SHIP AIR COMPRESSOR #28, and RTU-1.

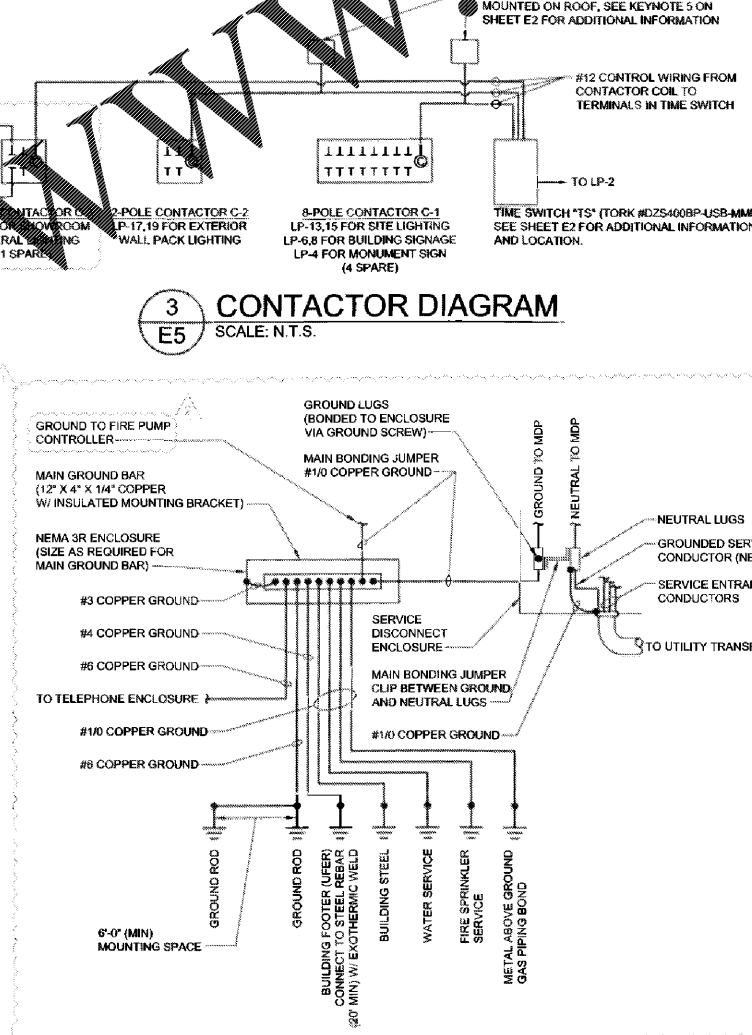
PANELBOARD LP table with columns: BUS AMPS (100A MLO), LOCATION (UTILITY AREA 107), GROUND BUS (ISOL. GROUND BUS). Rows include circuit descriptions like SERVICE AREA LTG, SITE LIGHTING, and EXTERIOR WALLPACKS.

PANELBOARD PP table with columns: BUS AMPS (200A MLO), LOCATION (UTILITY AREA 107), GROUND BUS (ISOL. GROUND BUS). Rows include circuit descriptions like SALES POD IG RCPT, CUSTOMER SHOWROOM IG RCPT, and SERVER CABINET IG RCPT.

PANELBOARD PP table with columns: BUS AMPS (200A MLO), LOCATION (UTILITY AREA 107), GROUND BUS (ISOL. GROUND BUS). Rows include circuit descriptions like AIR DRYER #1, ELECTRIC WHEEL BALANCER, and SMART LIFT BAYS.



1 ONE-LINE DIAGRAM SCALE: N.T.S.



2 GROUNDING DIAGRAM SCALE: N.T.S.

3 CONTACTOR DIAGRAM SCALE: N.T.S.

- ### CONTACTOR NOTES
- 1. ALL CONTACTORS TO BE ELECTRICALLY HELD TYPICAL.
 - 2. ALL CONTACTORS AND TIME SWITCH SHALL BE INSTALLED IN ONE (1) GENERAL PURPOSE CABINET WITH HINGED DOOR, VERIFY CABINET SIZE IN FIELD.
 - 3. PROVIDE AND WALL MOUNT TIME SWITCH "TS" CONTACTORS, AND PHOTOCELLS. TO CONTROL ALL EXTERIOR LIGHTING AND SIGNAGE AS SHOWN IN "CONTACTOR DIAGRAM" THIS SHEET. COORDINATE WITH STORE MANAGER THE HOURS OF OPERATION AND DEMONSTRATE ALL TIME SWITCH FUNCTIONS. PROVIDE STORE MANAGER AND BSRO CONSTRUCTION DEPARTMENT WITH COPIES OF ALL OPERATION AND INSTALLATION MANUALS.
 - 4. CONTROL INTENT IS FOR THE SHOWROOM LIGHTING TO BE ON TIME OF DAY CONTROL WITH MANUAL OVERRIDE.
 - 5. PROVIDE PHOTOCELL DOWNSTREAM OF TIMESWITCH TO ALLOW FOR PHOTOCELL OVERRIDE OF TIMESWITCH CONTROLS. CONTROL INTENT IS FOR PARKING LOT LIGHTING, SIGNAGE AND BUILDING SIGN LIGHTING TO BE "OFF" BETWEEN 2AM AND STORE OPENING TIME. AT STORE OPENING TIME, THE FIXTURES SHOULD BE ON PHOTOCELL CONTROL ONLY TO ALLOW THESE FIXTURES TO ENERGIZE ON DURING DARKER PERIODS THROUGHOUT THE DAY. WALL PACKS SHALL BE ON PHOTOCELL CONTROL ONLY 24 HOURS/DAY.
 - 6. THE CONDUIT WHICH PROVIDES POWER TO THE EXTERIOR SIGN LIGHTING, EXTERIOR LIGHTING, OR OTHER EXTERIOR REQUIREMENTS REQUIRING UNDERGROUND CONDUIT SHOULD COMMENCE UNDERGROUND AT THE INSIDE FACE OF AN EXTERIOR WALL AND EXIT THE BUILDING IMMEDIATELY WITHOUT RUNNING HORIZONTAL UNDER OR IN THE GROUND FLOOR CONSTRUCTION.

- ### ONE-LINE DIAGRAM NOTES
- 1. ALL METERING EQUIPMENT AND PANELS SHALL BE AS MANUFACTURED PER THE ELECTRICAL SPECIFICATION, AND MEET ALL REQUIREMENTS.
 - 2. GROUNDING REQUIREMENTS SHALL BE INSTALLED AS DIRECTED BY EQUIPMENT MANUFACTURER AND AS SHOWN ON DRAWINGS.
 - 3. LABEL EACH JUNCTION BOX, PULL OR TAP BOX, DISCONNECT SWITCH ETC. WITH BLACK LETTERING ON AN ORANGE STICKER WITH LETTERING SIZED IN RELATION TO SIZE OF COVER. FOR PANELS SEE SPECIFICATIONS.
 - 4. IT IS THE CONTRACTOR'S RESPONSIBILITY TO COORDINATE ALL REQUIREMENTS WITH THE UTILITY COMPANY. FIELD VERIFY THE AVAILABLE FAULT CURRENT WITH THE UTILITY COMPANY AND CONTACT THE ENGINEER OF RECORD WITH THE DISCREPANCY SO AS TO REVISE THE EQUIPMENT RATINGS AS NECESSARY.
 - 5. SIZE ALL BRANCH CIRCUITS NOT TO EXCEED 3% VOLTAGE DROP. ALL WIRE SIZES SHALL BE FOR AMPERAGE REQUIRED PER NEC.
 - 6. PROVIDE MULTI-LAYERED ACRYLIC LABELS PER SPECIFICATION FOR ALL DISTRIBUTION PANELBOARDS, BRANCH CIRCUIT PANELBOARDS, SWITCH GEAR SECTIONS, STARTERS AND INDIVIDUAL SWITCH GEAR FUSED SWITCHES.
 - 7. ALL CONDUIT SHALL BE RIGID GALVANIZED STEEL THROUGHOUT, EXCEPT WHERE OTHERWISE NOTED.
 - 8. SEE ELECTRICAL SPECIFICATIONS FOR ADDITIONAL INFORMATION.
 - 9. INCLUDE IN CONTRACT ALL ONE TIME TAP CHARGES AND FEES FROM UTILITY COMPANY. COORDINATE WITH UTILITY COMPANY.
 - 10. ALL ELECTRICAL AND TELEPHONE CONDUITS THAT PENETRATE FIRE RATED WALLS SHALL BE SEALED WITH FIRE STOP MATERIAL TO MEET ALL GOVERNING CODE REQUIREMENTS.
 - 11. CONTRACTOR TO PROVIDE LABEL STATING ARC-FAULT AND AFC RATING ON EACH PANEL.

ACERTUS CONSULTING GROUP, LLC
1487 West 29th Street • Lawrenceville, GA 30046
P: 770.962.1353 • F: 770.962.1355
www.acertusgroup.com

Firestone COMPLETE AUTO CARE

NEW FCAC STORE
2020 1
283 DAWSONVILLE HIGHWAY SW
GAINESVILLE, GA 30601

ISSUE BLOCK
07/20/20 REV #1
10/02/20 REV #2
10/16/20 REV #4
11/13/20 IFC

PROPERTY NO.: 160106
6 DIGIT NO.: 989074
4 DIGIT NO.: 7873
AOR PROJECT NUMBER: 1955855
TO PERMIT: DATE: 04/08/20
TO BID: DATE: ##-##-##

SHEET TITLE:
ONE-LINE DIAGRAM, PANEL SCHEDULES, AND NOTES
SHEET NUMBER:
E5