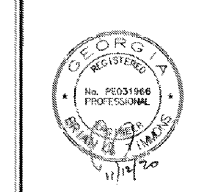


**NEW FCAC STORE**  
 2020 I  
 283 DAWSONVILLE HIGHWAY SW  
 GAINESVILLE, GA 30501



ISSUE BLOCK	
10/7/20/20	REV #1
10/02/20	REV #2
10/16/20	REV #4
11/13/20	IFC
PROPERTY NO.:	160109
6 DIGIT NO.:	908074
4 DIGIT NO.:	78H3
AOR PROJECT NUMBER:	1955555
TO PERMIT DATE:	04/06/20
TO BID DATE:	##-##-##
SHEET TITLE:	
<b>POWER PLAN</b>	
SHEET NUMBER:	
<b>E3</b>	

**POWER PLAN KEYNOTES**

- JUNCTION BOX WITH TOGGLE SWITCH DISCONNECT MOUNTED AT CEILING FOR GAS FIRED RADIANT HEAT CONTROLS. CONTRACTOR TO PROVIDE ALL REQUIRED DEVICES AND EQUIPMENT TO MAKE A COMPLETE WORKING SYSTEM. COORDINATE EXACT LOCATION WITH MECHANICAL CONTRACTOR.
- INTERLOCK MOTORIZED DAMPER ON "RH-1" AND "EF-1" SUCH THAT WHEN "EF-1" IS IN RUN MODE, DAMPER IS OPEN. DAMPER AND "EF-1" TO BE CONTROLLED BY TOXALERT SYSTEM.
- PROVIDE DOUBLE DUPLEX RECEPTACLE FOR "RP-1" AND "WH-1". COORDINATE LOCATION OF "WH-1" AND "RP-1" WITH PLUMBER CONTRACTOR.
- TELE-POWER POLE. EXTEND FROM SALES DESK AND/OR DESKS AS SHOWN UP TO STRUCTURE. SEE DETAIL ON SHEET E4 FOR ADDITIONAL INFORMATION. FLEX FROM POLE AND MOUNT ALL WIRING DEVICES IN DESKS AS SHOWN. VERIFY REQUIREMENTS WITH MILLWORK VENDOR. COORDINATE EXACT POWER POLE DROP LOCATION PRIOR TO ROUGH-IN.
- REFER TO "DATA REQUIREMENTS" (THIS SHEET) FOR POWER AND CONDUIT INFORMATION IN SERVER CABINET.
- PLYWOOD BACKBOARD. SEE "TELEPHONE GROUNDING DETAIL" ON SHEET E1.
- PROVIDE 3" LONG, 2" DIAMETER PVC CONDUIT THRU WALL AS SHOWN. MOUNT CONDUIT AT SAME HEIGHT AS BOTTOM OF STRUCTURE. RUN CONDUIT AS CLOSE AS POSSIBLE TO STRUCTURE. PROVIDE GROMMET ON BOTH ENDS OF PVC. REFER TO ARCHITECTURAL SHEETS FOR ADDITIONAL INFORMATION.
- MOUNT DEDICATED LINE ISOLATED-GROUND RECEPTACLE ON UNISTRUT FOR WHEEL ALIGNMENT COMPUTER. COORDINATE EXACT LOCATION AND CONNECTION REQUIRED WITH BSRO. DROP CONDUIT FROM STRUCTURE DOWN UNISTRUT LADDER. EQUIPMENT MUST BE IN PLACE PRIOR TO CONDUIT INSTALLATION TO ENSURE THE CONDUIT DROP DOES NOT INTERFERE WITH PROPER EQUIPMENT OPERATION. REFER TO STRUCTURAL DRAWINGS FOR UNDER SLAB CONDUIT LOCATION FROM THE ALIGNMENT PIT TO THE ALIGNMENT CONTROLLER.
- RESTROOM EXHAUST FAN. PROVIDE ALL ACCESSORIES AS REQUIRED TO CONTROL EXHAUST FAN FROM OCCUPANCY SENSORS IN RESTROOMS.
- PROVIDE POWER CONNECTION TO FACTORY MOUNTED DISCONNECT AND WP/FGI RECEPTACLE AS SHOWN ON PLAN.
- ROUTE CORDS FOR POWER STRIPS TO ADJACENT RECEPTACLE. CONCEAL ALL CORDS IN NEAT AND CLEAN MANNER.
- MOUNT JUNCTION BOX AT STRUCTURE AND EXTEND DOWN TO 22" AFF WITH "SO" CORD FOR TEMPORARY POWER FOR SMALL, HAND TOOL BATTERY RECHARGING.
- PROVIDE 30A, 2-POLE, NON-FUSED, LOCKABLE (WITH LOCK PROVIDED) DISCONNECT SWITCH (SIEMENS #MM5K31) FOR ALIGNMENT LIFT EQUIPMENT CONTROL UNIT. UNLESS NOT ALLOWED BY AHJ, INSTALL DISCONNECT AT 48" AFF ON UNISTRUT LADDER BESIDE ALIGNMENT EQUIPMENT CONSOLE CABINET. PROVIDE ALL POWER AND SIGNAL WIRING AND CIRCUITING. CIRCUIT AS SHOWN. VERIFY ALL REQUIREMENTS WITH VENDOR. ROUTE CONDUIT FROM STRUCTURE TO DISCONNECT DOWN THE UNISTRUT LADDER. CABINET MUST BE IN PLACE PRIOR TO CONDUIT DROP TO ENSURE CONDUIT ROUTING DOES NOT INTERFERE WITH PROPER EQUIPMENT OPERATION.
- DISCONNECT SWITCH (SIEMENS #MM5K31) FOR ROTARY LIFT EQUIPMENT CONTROL UNIT. UNLESS NOT ALLOWED BY AHJ, INSTALL DISCONNECT BELOW DECAL ON LIFT POST. CONDUIT AND DISCONNECT SHALL NOT OBSCURE ANY SAFETY DECALS. DO NOT USE "THROUGH BOLTS" AS THIS TYPE OF BOLT MAY INTERFERE WITH EQUIPMENT OPERATION. ANCHORS FOR DISCONNECT SHALL BE IN THE CENTER OF THE LIFT POST. PROVIDE ALL POWER, SIGNAL, AND LIFT SAFETY SWITCH WIRING AND CIRCUITING. CIRCUIT AS SHOWN. VERIFY ALL REQUIREMENTS WITH VENDOR. ROUTE CONDUIT FROM STRUCTURE TO DISCONNECT DOWN THE SIDE OF THE EQUIPMENT POST. LIFT EQUIPMENT MUST BE IN PLACE PRIOR TO CONDUIT DROP TO ENSURE CONDUIT ROUTING DOES NOT INTERFERE WITH PROPER EQUIPMENT OPERATION.
- PROVIDE CONDUIT WITH PULL WIRE FOR TELEPHONE SERVICE. PROVIDE CONDUIT SEAL AT 18" AFF. COORDINATE ROUTING AND TERMINATION POINTS WITH SITE UTILITIES. VERIFY EXACT REQUIREMENTS WITH LOCAL PHONE COMPANY. REFER TO CIVIL PLANS FOR MORE INFORMATION.
- REFER TO "DATA REQUIREMENTS" (THIS SHEET) FOR POWER AND CONDUIT INFORMATION IN "MVS" STATION.
- CONDUIT ASSOCIATED WITH DATA BOX SHALL BE EXTENDED TO SERVER CABINET. PROVIDE PULL STRINGS IN CONDUIT.
- PROVIDE 120 VOLT CONNECTION FOR TOXALERT CONTROL PANEL.
- PROVIDE JUNCTION BOX FOR FIRE ALARM EQUIPMENT AND OPTIONAL SECURITY CONTROL PANEL. VERIFY EXACT ELECTRICAL CONNECTION OF EQUIPMENT IN FIELD AND PROVIDE RECEPTACLE AS REQUIRED. COORDINATE EXACT REQUIREMENTS WITH BSRO.
- PROVIDE POWER TO FACTORY MOUNTED DISCONNECT SWITCH. COORDINATE ALL WORK WITH MECHANICAL CONTRACTOR.
- MEET ALL ELECTRICAL EQUIPMENT CLEARANCES BOTH HORIZONTALLY AND VERTICALLY IN THIS SPACE.
- PROVIDE RECEPTACLE FOR "NO LOSS DAYS" SIGN AT 11'-0" AFF. VERIFY EXACT LOCATION WITH CONSTRUCTION MANAGER PRIOR TO ROUGH-IN.
- PROVIDE WORKSTATION FAN ULINE #H-4092. RECEPTACLE FOR WORKSTATION FAN IS SUSPENDED FROM STRUCTURE. CIRCUIT WILL HAVE GFCI PROTECTION AT BREAKER. SEE SHEET E2 FOR CONTROLS AND SHEET E4 FOR MOUNTING INFORMATION.
- CONDUIT ASSOCIATED WITH DATA BOX SHALL BE EXTENDED TO SERVER CABINET. PROVIDE PULL STRINGS IN CONDUIT. REFER TO DETAIL ON SHEET E4 FOR INFORMATION ON MOUNTING LOCATION OF DATA BOX AND POWER BEHIND DEVICES IN THIS AREA.
- PROVIDE POWER AND DATA FOR PODS AT THIS LOCATION. ROUTE POWER AND DATA DOWN POWER POLE AND EXTEND POWER AND DATA TO EACH POD AS REQUIRED. POWER WIRING THROUGH PODS TO BE MC CABLE ROUTED THROUGH MILLWORK CONNECTING PODS. VERIFY EXACT REQUIREMENTS WITH MILLWORK VENDOR PRIOR TO ROUGH-IN.
- PROVIDE JUNCTION BOX FOR TOXALERT SENSOR AND PROVIDE WIRING BETWEEN TOXALERT PANEL AND SENSOR. COORDINATE LOCATIONS WITH MECHANICAL CONTRACTOR.
- PROVIDE JUNCTION BOX FOR DATA CONNECTION AT MRT DISPLAY. EXTEND DATA CABLE FROM JUNCTION BOX IN WALL TO EACH DATA BOX MOUNTED INSIDE MRT CABINET. ROUTE DATA CONDUIT FROM MRT CABINET BACK TO SERVER CABINET LOCATED IN OFFICE.
- PROVIDE JUNCTION BOX FOR POWER CONNECTION AT MRT DISPLAY. EXTEND MC CABLE FROM J-BOX IN WALL TO EACH RECEPTACLE MOUNTED INSIDE MRT CABINET. COORDINATE EXACT CONNECTION MILLWORK PRIOR TO ROUGH-IN.
- REFER TO BREAK COUNTER ELEVATION (THIS SHEET) FOR MORE INFORMATION.

**ELECTRICAL SHOP EQUIPMENT SCHEDULE**

ITEM #	QUANTITY	DESCRIPTION	VOLTS	PHASE	POLE	AMPS	NOTES
9	1	AIR DRYER CHAMPION #CRH35	120	1	1	20	SEE DETAIL ON SHEET E4 FOR ADDITIONAL INFORMATION
10	1	BRAKE SHOP #BL505-AB (INSTALLED BY HUNTER)	120	1	1	20	PROVIDE RECEPTACLE ON UNISTRUT LADDER. RUN CONDUIT DOWN LADDER FROM CEILING.
13A	1	ELECTRONIC WHEEL BALANCER #RFE13 (INSTALLED BY HUNTER)	208	1	2	20	CUT CORD & PLUG FOR HARDWIRED CONNECTION. MOUNT DISCONNECT AT 48" AFF. PLACE DEVICES BEHIND CENTER CONSOLE IN ORDER TO NOT INTERFERE WITH OPENING EQUIPMENT SHROUD.
13B	1	ELECTRONIC WHEEL BALANCER #SWT33 (INSTALLED BY HUNTER)	208	1	2	20	CUT CORD & PLUG FOR HARDWIRED CONNECTION. MOUNT DISCONNECT AT 48" AFF ON UNISTRUT LADDER. RUN CONDUIT DOWN FROM CEILING. PLACE DEVICES BEHIND CENTER CONSOLE IN ORDER TO NOT INTERFERE WITH OPENING EQUIPMENT SHROUD.
17	2	POWER CORD REEL	120	1	1	20	MOUNT TO ROOF STRUCTURE AT LOCATION SHOWN. CIRCUIT WILL HAVE GFCI PROTECTION AT BREAKER. INSTALL TO AVOID CONFLICT WITH OTHER EQUIPMENT. SEE DETAIL ON SHEET E4 FOR ADDITIONAL INFORMATION.
18B	1	TIRE CHANGER #TCR15 (INSTALLED BY HUNTER)	208	1	2	30	PROVIDE NEMA L6-30R ON UNISTRUT LADDER. RUN CONDUIT DOWN LADDER FROM CEILING.
28	2	5 HP AIR COMPRESSOR CHAMPION #VR5-8	208	3	3	30	SEE ONE-LINE DIAGRAM ON SHEET E5 AND DETAIL ON SHEET E4 FOR ADDITIONAL INFORMATION. PROVIDE 30A, 3-POLE, LOCKABLE DISCONNECT WITH LOCK. MAKE ALL FINAL POWER TERMINATIONS ADJACENT TO AIR PIPE MANIFOLD ON COMPRESSOR.

NOTES:  
 VERIFY ALL ELECTRICAL REQUIREMENTS AND NEMA CONFIGURATIONS TO ACTUAL EQUIPMENT SUPPLIED PRIOR TO ROUGH-IN.

**POWER PLAN GENERAL NOTES**

- ALL DEVICES LOCATED IN SERVICE AREA AND INVENTORY SHALL BE MOUNTED AT 48" AFF TO TOP OF BOX, UNLESS NOTED OTHERWISE.
- ALL DEVICES LOCATED IN THE FOLLOWING ROOMS: CUSTOMER SHOW ROOM, OFFICE, BREAK AREA, EMPLOYEE TOILET, AND UNISEX TOILET, SHALL BE MOUNTED AT 24" AFF TO CENTER, UNLESS NOTED OTHERWISE.
- ALL WIRING SHALL BE INSTALLED IN STRICT ACCORDANCE WITH THE NEC AND LOCAL CODE AUTHORITIES HAVING JURISDICTION FOR ROUTING OF ALL CONDUITS. SEE "GENERAL ELECTRICAL NOTES" ON SHEET E1.
- WIRE ALL HVAC CONTROL DEVICES. AND COORDINATE WITH OTHERS. SEE "GENERAL ELECTRICAL NOTES" ON SHEET E1 FOR ADDITIONAL INFORMATION.

**POWER / DATA REQUIREMENTS**

THERE ARE A TOTAL OF EIGHT (8) LINES THAT SERVICE EACH STORE FOR PHONE AND DATA. INTERNET SERVICE VIA LOCAL CABLE SERVICE WILL BE INSTALLED POST OPENING. ALL LINES TERMINATE AT "D-MARC" BOARD IN UTILITY AREA.

PROVIDE ALL POWER AND LOW VOLTAGE CONDUITS, PER CODE, AND THIS INCLUDES OPTIONAL STATE INSPECTIONS EQUIPMENT.

CLEAR ACCESS WILL BE MAINTAINED IN ORDER FOR BSRO "IT" DEPARTMENT TO INSTALL ALL NECESSARY WIRING. BSRO "IT" DEPARTMENT WILL INSTALL ALL WIRING AND EQUIPMENT UNLESS OTHERWISE NOTED.

"MVS" STATION REQUIREMENTS IN SERVICE AREA:  
 INSTALL ONE (1) QUAD RECEPTACLE IN THE MIDDLE OF THE CABINET. THE POWER SHOULD TERMINATE IN A JUNCTION BOX MOUNTED ON THE WALL ADJACENT TO THE STATION. ASSOCIATED DATA BOXES SHOULD TERMINATE IN A JUNCTION BOX BESIDE THE STATION. CONDUIT ASSOCIATED WITH DATA BOX SHALL BE EXTENDED TO SERVER CABINET. PROVIDE PULL STRINGS IN CONDUIT. COORDINATE WITH OTHER SERVER CONDUITS.

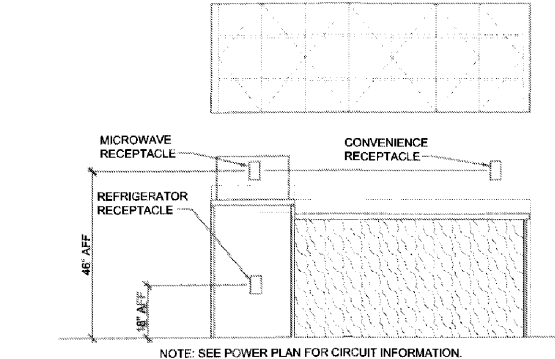
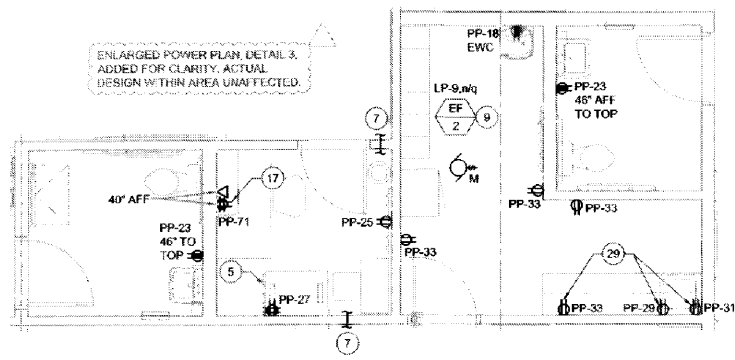
"FOOT" REQUIREMENTS IN RESTROOM / SHOWROOM:  
 PROVIDE ONE (1) QUAD RECEPTACLE WHICH SHOULD TERMINATE IN A JUNCTION BOX MOUNTED ON THE BACK SIDE OF THE PANEL, BELOW THE LOWEST AVAILABLE SHELF, AND KNOWN AS "OUT PANEL".

SERVER CABINET POWER REQUIREMENTS:  
 PROVIDE ONE (1) QUAD RECEPTACLE ON RIGHT SIDE OF SERVER CABINET MOUNTED AT 15" AFF AS CIRCUIT AS SHOWN. REFER TO SHEET A FOR ADDITIONAL INFORMATION.

SERVER CABINET LEFT SIDE CONDUIT:  
 PROVIDE ONE (1) CONDUIT FROM 15" AFF ABOVE THE LEFT SIDE OF SERVER CABINET TO INVENTORY 10'-0" AFF ABOVE TELEPHONE EQUIPMENT RECEPTACLE.

UTILITY ROOM AND EXTERIOR SITE CONDUIT:  
 PROVIDE SUFFICIENT LENGTH OF 2" CONDUIT AND EXTEND THE ONE (1) 2" CONDUIT FROM THE EXTERIOR TO THE "D-MARC" LOCATION ON THE UTILITY ROOM BOARD. SEE NOTE 15.

**ENLARGED POWER PLAN**  
 SCALE: 1/4" = 1'-0"



**BREAK COUNTER ELEVATION**  
 SCALE: N.T.S.

**POWER PLAN**  
 SCALE: 1/8" = 1'-0"

