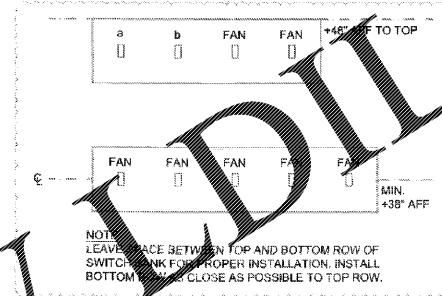
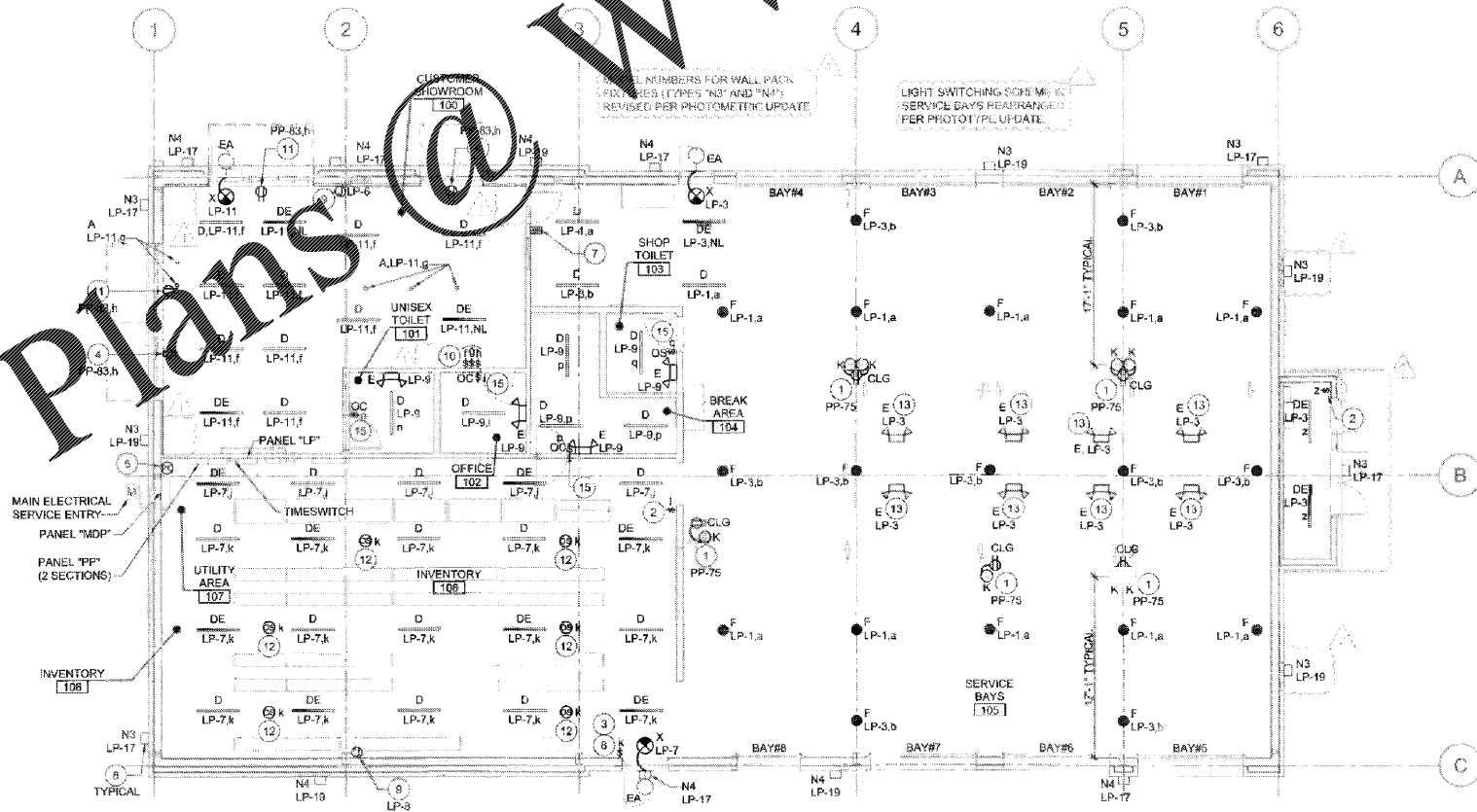


2 LIGHTING CONTROL WIRING DIAGRAM
E2 SCALE: NONE



3 SWITCH BANK ELEVATION
E2 SCALE: NONE



1 LIGHTING PLAN
E2 SCALE: 1/8" = 1'-0"

LIGHTING PLAN GENERAL NOTES

- A. ALL BATTERY EMERGENCY LIGHTING UNITS SHALL BE WIRED AHEAD OF THE SWITCHES WHICH CONTROL THE LIGHTING WHERE THE UNIT IS LOCATED. THE UNIT SHALL OPERATE WHEN THE NORMAL LIGHTING FAILS.
- B. SEE "ARCHITECTURAL REFLECTED CEILING PLAN" FOR ALL LIGHTING FIXTURES LOCATION DIMENSIONS.
- C. SEE "FIXTURE PLAN" SHEET F1 FOR ALL EQUIPMENT LOCATIONS AND QUANTITIES.
- D. ALL WIRING SHALL BE INSTALLED IN STRICT ACCORDANCE WITH THE NEC AND LOCAL CODE AUTHORITIES HAVING JURISDICTION. FOR ROUTING OF ALL CONDUITS, SEE "GENERAL ELECTRICAL NOTE 3" ON SHEET E1.
- E. FOR MOUNTING HEIGHTS OF ALL LIGHT FIXTURE TYPES SEE "LIGHT FIXTURE SCHEDULE" ON SHEET E1, UNLESS NOTED OTHERWISE.

LIGHTING PLAN KEYNOTES

1. CORD REEL LIGHT (FIXTURE TYPE "K"), MOUNTED TO ROOF STRUCTURE AT LOCATION SHOWN. COORDINATE INSTALLATION TO AVOID CONFLICT WITH OTHER EQUIPMENT. SEE "CORD REEL LIGHT DETAIL" ON SHEET E4 FOR ADDITIONAL INFORMATION AND COORDINATE WITH SHEET F1 FOR EXACT LOCATION.
2. PROVIDE TOGGLE SWITCH FOR MANUAL CONTROL OF LIGHTING FIXTURES AS INDICATED. MANUAL CONTROL IS FOR OCCUPANT SAFETY NEAR ELECTRICAL GEAR.
3. PROVIDE POWERPACK(S) (SENSOR SWITCH #PP20) AS REQUIRED FOR LIGHTING CONTROLS IN THIS AREA. REFER TO DETAIL 2 (THIS SHEET) FOR ADDITIONAL INFORMATION.
4. PROVIDE RECEPTACLE 6" ABOVE SHOW WINDOW TO MEET NEC SHOW WINDOW REQUIREMENTS.
5. PROVIDE PHOTOCELLS. SEE "CONTACTOR DIAGRAM" AND "CONTACTOR NOTES" ON SHEET E5 FOR ADDITIONAL INFORMATION. PHOTOCELL TO FACE NORTH. PROVIDE A WEATHERTIGHT CONDUIT BODY ON INSIDE FACE OF BUILDING PARAPET WITH 1" RIGID CONDUIT TO 36" ABOVE ROOFLINE FOR PHOTOCELL. WHERE PARAPET DOES NOT EXIST, PROVIDE FREE-STANDING RIGID CONDUIT WITH WEATHERPROOF ROOF PENETRATION. VERIFY LOCATION AND REQUIREMENTS IN FIELD.
6. ROUTE DESIGNATED CIRCUITS VIA TIME SWITCH "TS" AND CONTACTORS, AS NOTED IN THE "CONTACTOR DIAGRAM" AND "CONTACTOR NOTES" ON SHEET E5.
7. PROVIDE ONE (1) FOUR-GANG BOX AND (1) FIVE-GANG BOX WITH TWO (2) TOGGLE SWITCHES TO CONTROL SWITCH-LEGS (a,b) AND SEVEN (7) TOGGLE SWITCHES FOR THE CONTROL OF SHOP FANS ITEM 42. LABEL ALL SWITCHES TO CORRESPOND WITH THE CONTROLLED SWITCH-LEG OR FAN. PROVIDE MATCHING COVER PLATE. VERIFY SWITCHING ARRANGEMENT IN FIELD. ROUTE CONDUIT UP INSIDE FACE OF WALL FOR RECESSED BOX. SEE SWITCHES DETAIL THIS SHEET FOR MORE INFO.
8. PROVIDE SWITCH (SENSOR SWITCH SPD0M-IV) FOR MANUAL CONTROL OF LIGHTING FIXTURES AS INDICATED.
9. PROVIDE JUNCTION BOX IN STUD BUMP-OUT FOR BUILDING MOUNTED SIGNAGE. COORDINATE EXACT LOCATION WITH ARCHITECT PRIOR TO ROUGH-IN.
10. PROVIDE ONE (1) THREE-GANG BOX WITH THREE (3) TOGGLE SWITCHES FOR CONTROL SWITCH-LEGS (a,b) AND SEVEN (7) TOGGLE SWITCHES FOR THE CONTROL OF SHOP FANS ITEM 42. LABEL ALL SWITCHES TO CORRESPOND WITH THE CONTROLLED SWITCH-LEG OR FAN. PROVIDE MATCHING COVER PLATE. VERIFY SWITCHING ARRANGEMENT IN FIELD. ROUTE CONDUIT UP INSIDE FACE OF WALL FOR RECESSED BOX. SEE SWITCHES DETAIL THIS SHEET FOR MORE INFO.
11. INSTALL RECEPTACLE 6" ABOVE SHOW WINDOW (TO MEET NEC SHOW WINDOW REQUIREMENTS) FOR "OPEN SIGN. VERIFY EXACT LOCATION PRIOR TO ROUGH-IN. SEE SHEET F2 FOR ADDITIONAL INFORMATION. SECURE THE SMALL LOW VOLTAGE TRANSFORMER WHICH PLUGS INTO THE RECEPTACLE SO THAT THE TRANSFORMER CAN NOT COME OUT OF THE PLUG VIA GRAVITY.
12. PROVIDE CEILING MOUNTED HIGH BAY AISLE OCCUPANCY SENSOR (SENSOR SWITCH MODEL #CM-6) TO CONTROL LIGHTING IN INVENTORY AREA PENDANT MOUNT ON CONDUIT BETWEEN LIGHT FIXTURES AT STRUCTURE.
13. FIXTURE TO BE PENDANT MOUNTED FROM CONDUIT AT STRUCTURE. SEE LIGHT FIXTURE SCHEDULE FOR MORE INFORMATION.
14. NOT USED.
15. PROVIDE OCCUPANCY SENSOR WITH SWITCH (SENSOR SWITCH #WSX-PDT) INSTALLED ON WALL 46" AFF (TO TOP) IN ALL LOCATIONS. COORDINATE FINAL LOCATION WITH BSRO. ROOM LAYOUT MUST BE TAKEN INTO ACCOUNT BEFORE INSTALLATION.

ISSUE BLOCK	
1	07/20/20 REV #1
2	10/02/20 REV #2
3	10/16/20 REV #4
4	11/13/20 P-C

PROPERTY NO.: 160109
6 DIGIT NO.: 908074
4 DIGIT NO.: 78H3
ACR PROJECT NUMBER: 195585
TO PERMIT: DATE: 04/08/20
TO BID: DATE: ##-##-##

SHEET TITLE:
LIGHTING PLAN

SHEET NUMBER:
E2

Order Plans @ www.WDIDLine.com