

PLUMBING FIXTURE LOAD SCHEDULE

PLUMBING FIXTURE	QTY	FIXTURE UNITS				REMARKS
		DFU	WSFU EACH	TOTAL WSFU	TOTAL DFU	
WATER CLOSET	2	4	8	16	TANK	
LAVATORY	2	1	2	4		
SERVICE SINK	2	2	4	8		
FLOOR DRAIN	4	2	8	16		
HOSE BIBB	2	---	---	10		
WATER COOLER	2	1/2	1	0.25	0.5	
TOTALS		23		30.5		

NOTE:
CALCULATIONS SHOWN ARE BASED ON 2022 INTERNATIONAL PLUMBING CODE
4" σ SANITARY = 160 DFU @ 1/8" PER FOOT SLOPE
23 DFU = 4" σ PIPE
30.5 WSFU = 24 GPM = 1-1/4" σ WATER SERVICE

PLUMBING FIXTURE AND PIPING CONNECTION SCHEDULE

TAG	DESCRIPTION	MANUFACTURER MODEL	SIZE	VALVE/FAUCET	CONNECTIONS				REMARKS
					DRAIN	VENT	C.W.	H.W.	
WC-1	WATER CLOSET FLOOR MTD. FLUSH TANK	AMERICAN STANDARD #2467 016	ELONGATED	INTEGRAL WITH TANK	4	2	1/2		MOUNT 18" A.F.F. HANDICAP
L-1	LAVATORY HANDICAP-CENTERSET	AMERICAN STANDARD #0124 024	20"x18" VITREOUS CHINA	CHICAGO FAUCET 802-V317CP	1 1/2	1 1/2	1/2	1/2	MOUNT 34" A.F.F. HANDICAP 0.6 GPM AERATOR - CHICAGO FAUCET - E2805JKCP.
L-2	LAVATORY HANDICAP-CENTERSET	ELKAY ELVW02219CS	22"x18" STAINLESS STEEL	CHICAGO FAUCET 802-V317CP	1 1/2	1 1/2	1/2	1/2	MOUNT 34" A.F.F. HANDICAP 0.6 GPM AERATOR - CHICAGO FAUCET - E2805JKCP.
L-3	SERVICE AREA FLOOR MOUNTED SINK	FIAT #FL-1	23"x22"x14" PLASTIC	A-1 FAUCET	1 1/2	1 1/2	1/2	1/2	DECK MOUNTED FAUCET PROVIDED WITH SINK
MS-1	FLOOR MOUNTED MOP SINK	FIAT #MSB-2424	24"x24"	MODEL 830-AA FAUCET W/ INTEGRAL VACUUM BREAKER	2	1 1/2	3/4	3/4	889-CC 24" MOP BRACKET, 1453-BB STRAINER
FD-1	FLOOR DRAIN	J.R. SMITH #2010CA-NB	6" ROUND TOP		3	2			CAST IRON BODY WITH TRAP PRIMER CONNECTION
FD-2	FLOOR DRAIN	J.R. SMITH #2350-NB	8 1/2" ROUND WITH SEDIMENT BUCKET		3	2			CAST IRON BODY PROVIDE O-RING SEAL SS3000
FD-3	FLOOR DRAIN	J.R. SMITH #3061	12 1/2" ROUND WITH SEDIMENT BUCKET		3	2			CAST IRON BODY WITH TRAP PRIMER ADAPTOR #2895S
WCO	WALL CLEANOUT	J.R. SMITH #4472T	STAINLESS STEEL COVER PLATE		SEE PLANS				
FCO	FLOOR CLEANOUT	J.R. SMITH #4020	5 3/4" ROUND "TWIST TO FLOOR" ADJUSTABLE TOP		SEE PLANS				NICKEL BRONZE TOP
GCO	GRADE CLEANOUT	J.R. SMITH #4280	8 3/4" ROUND CLEAN OUT FOR UNFINISHED AREA		SEE PLANS				CAST IRON TOP
HB	HOSE BIBB WITH INTEGRAL VACUUM BREAKER SPOUT	ARROWHEAD BRASS HOSE BIBB 361 WITH NIBCO 90° ELBOW 707-3-5-LF	3/4"	3/4" MALE HOSE THREAD OUTLET			3/4		90° ELBOW WITH 3/4" SOLDER INLET AND 3/4" THREADED OUTLET, AND INTEGRATED VACUUM BREAKER MOUNT 36" A.F.F. UNO
EW-1	BOTTLE FILLING 8-LITER WATER COOLER	ELKAY E28TLWVSL			1 1/2	1 1/4	3/8		38 3/8" ORIFICE HEIGHT AFF FOR HIGH FOUNTAIN; PROVIDE W/ APRON MODEL #KAPREZL
EW-2	WATER COOLER	ELKAY			1 1/4	1 1/4	3/8		32 7/8" ORIFICE HEIGHT A.F.F.
TMV-1	THERMOSTATIC MIXING VALVE	POWELL #FLM40	1/2"			1/2	1/2		SET FOR 110° F HOT WATER ASSE 1070 CERTIFIED
TMV-2	THERMOSTATIC MIXING VALVE	POWELL #150-10	1/2"			1/2	1/2		SET FOR 85° F HOT WATER ASSE 1071 CERTIFIED
TP-1	TRAP PRIMER	MIFAB MR-500	1/2"				1/2		M-DU-500 DISTRIBUTION UNIT & M-800 TRAP FITTING
RP-1	RECIRCULATION PUMP	GRUNDFOS UPS-10 B5/TLC	3 FT HEAD AT 3 GPM				1/2		SINGLE PHASE, 115 V 60 W PROVIDE WITH TIMER AND HONEYWELL AQUASTAT L6006C

ACCEPTABLE MANUFACTURERS FOR EQUIVALENT OF SCHEDULE PRODUCT (NO OTHER SUBSTITUTIONS WILL BE ALLOWED):
* SEE SPECIFICATIONS
NOTES & REMARKS:
1. COLOR OF FIXTURES SHALL BE WHITE, UNLESS NOTED OTHERWISE.
2. ALL SINKS AND LAVATORIES SHALL HAVE MINIMUM 17 GAUGE TRAPS, WITH CLEAN OUT PLUGS AND WALL ESCUTCHEONS, CHROME PLATED, OFFSET TRAP ON DRAIN LINE, TAILPIECE WITH STRAINER, HAND-SHIELD VINYL COVERED PIPE INSULATION WITH HOOD OVER NEW DRAIN LINE AND HOT AND COLD WATER LINES.
3. ALL FIXTURES SHALL HAVE INDIVIDUAL WALL SUPPLY STOPS, LOOSE KEY OPERATED, WITH WALL ESCUTCHEONS, CHROME PLATED.
4. TOILET SEATS: ELONGATED WITH OPEN FRONT AND CONTAINING ANTI-MICROBIAL AGENT, BEMIS MODEL #3155CT.
5. WATER COOLERS FURNISHED WITH INTEGRAL VOLUME REGULATORS, HANGERS, WALL MOUNTING PLATE AND 5 YEAR WARRANTY. PROVIDE BOTTLE FILLER ON LOW WATER COOLER.
6. LAVATORIES L-1 AND L-2 SHALL BE PROVIDED WITH A VANDAL RESISTANT 0.6 GPM AERATOR - CHICAGO FAUCET MODEL E2805JKCP.
7. ALL TOILET FLUSH CONTROLS SHALL BE PROVIDED ON THE WIDE SIDE OF THE FIXTURE. (AWAY FROM WALL)
8. PROVIDE WALL MOUNTED SERVICE FAUCET, MOP HANGER BRACKET AND STAINLESS STEEL STRAINER AT MS-1 LOCATION.
9. ALL FIXTURES SHALL BE SUBMITTED AND APPROVED BY ENGINEER.
10. PROVIDE 4" DEEP SEAL TRAP FOR ALL FLOOR DRAINS.

GAS FIRED WATER HEATER SCHEDULE

TAG	AREA SERVED	MANUFACTURER	MODEL NUMBER	STORAGE CAPACITY	RECOVERY CAPACITY	MBH INPUT	VOLTS/ PHASE
WH-1	BUILDING	A. O. SMITH	BTX-80	60 GAL.	63 GPH @ 100° TEMP RISE	76	120/1

ACCEPTABLE MANUFACTURERS FOR EQUIVALENT OF SCHEDULE PRODUCT (NO OTHER SUBSTITUTIONS WILL BE ALLOWED):
* SEE SPECIFICATIONS
NOTES:
1. WATER HEATER FURNISHED AND INSTALLED BY CONTRACTOR.
2. PROVIDE THROUGH ROOF VENT TERMINATION PER MANUFACTURER'S RECOMMENDATIONS.
3. SET DISCHARGE TEMPERATURE OF WATER HEATER TO OPERATE AT 140 DEG F MAX. (FOR MOP SINK USE ONLY, SEE PLUMBING NOTES AND WATER PIPING DIAGRAM).
4. ROUTE TRAP RELIEF DRAIN AND OTHER DRAIN PIPING TO FLOOR DRAIN. TERMINATE 2" ABOVE RIM LEVEL.
5. PROVIDE PRE-MANUFACTURED 18" HEIGHT STEEL WATER HEATER STAND RATED FOR A 50 GALLON WATER HEATER.

GAS PRESSURE REGULATOR SCHEDULE

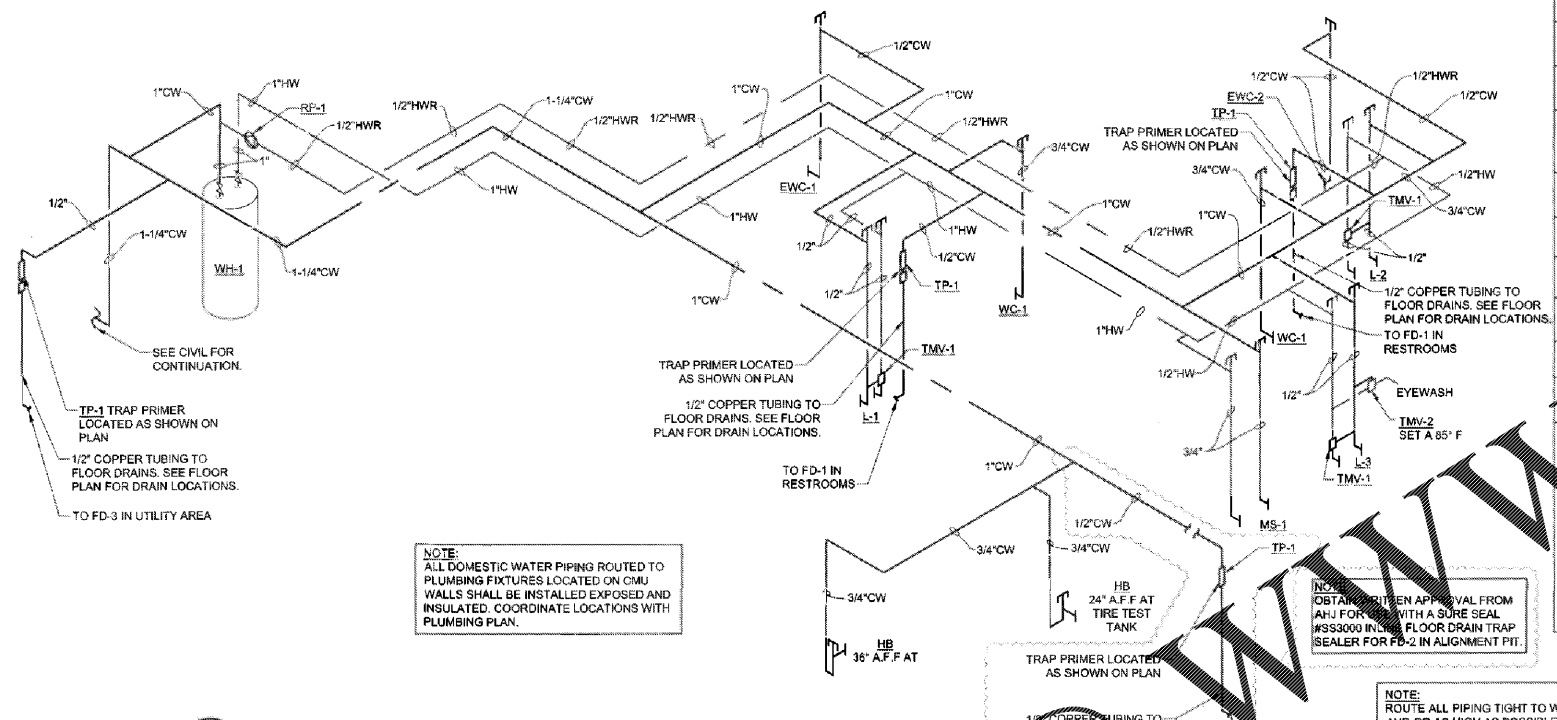
MANUFACTURER	MODEL NUMBER	CFH CAPACITY	INLET PRESSURE	OUTLET PRESSURE	SPRING COLOR RANGE-ORIFICE
ACTARIS	B-31R 3/4"x3/4"	UP TO 150	2 P.S.I.G.	7 INCHES W.C.	LT.GREEN 5.5 TO 8.0 INCHES W.C.-1/8"
ACTARIS	B-31R 3/4"x1"	150 TO 400	2 P.S.I.G.	7 INCHES W.C.	LT.GREEN 5.5 TO 8.0 INCHES W.C.-1/4"
ACTARIS	B-31R 1"x1"	400 TO 800	2 P.S.I.G.	7 INCHES W.C.	LT.GREEN 5.5 TO 8.0 INCHES W.C.-3/8"

NOTES:
1. REGULATOR ARE FULL CAPACITY INTERNAL RELIEF TYPE.
2. REGULATOR TO BE INSTALLED WITH RELIEF VENT IN POSITION TO PREVENT ENTRANCE OF WATER (PROVIDE SCREENED VENT ELBOW AS REQUIRED).
3. TAG REGULATOR WITH INLET AND OUTLET SETTINGS. AFFIX WARNING "DO NOT REMOVE".

SLOPE OF HORIZONTAL DRAINAGE PIPE

SIZE	MINIMUM SLOPE
2-1/2" OR LESS	1/4" / R OR 2%
3" TO 6"	1/8" / R OR 1%

NOTE: SCHEDULE BASED ON INTERNATIONAL PLUMBING CODE, SECTION 704 - TABLE 704.1.

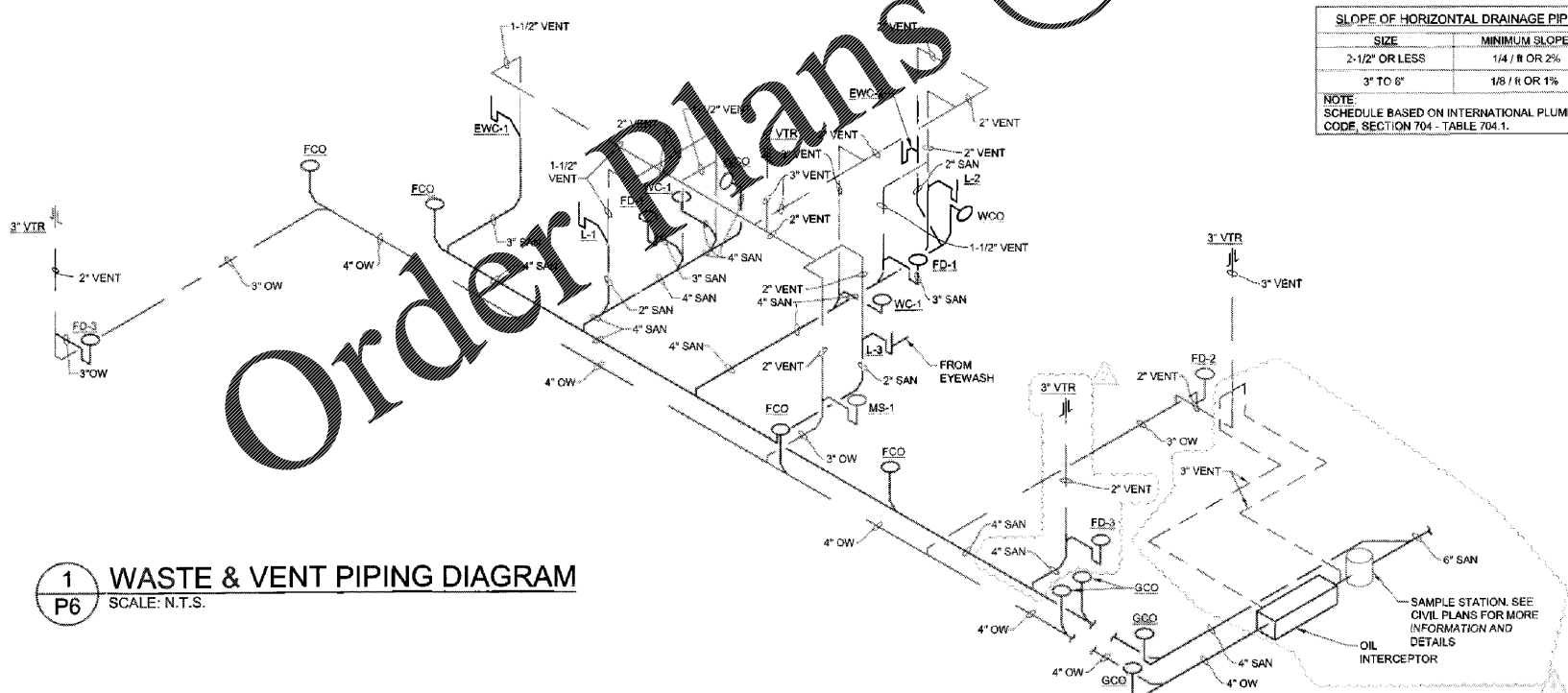


NOTE: ALL DOMESTIC WATER PIPING ROUTED TO PLUMBING FIXTURES LOCATED ON CMU WALLS SHALL BE INSTALLED EXPOSED AND INSULATED. COORDINATE LOCATIONS WITH PLUMBING PLAN.

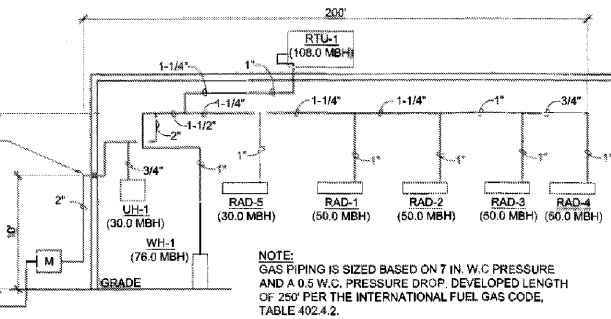
NOTE: ROUTE ALL PIPING TIGHT TO WALL AND OR AS HIGH AS POSSIBLE.

NOTE: SANITARY AND DOMESTIC WATER PIPING DIAGRAMS ARE DIAGRAMMATIC ONLY. CONTRACTOR SHALL COORDINATE EXACT ROUTING OF PIPING WITH FIELD CONDITIONS.

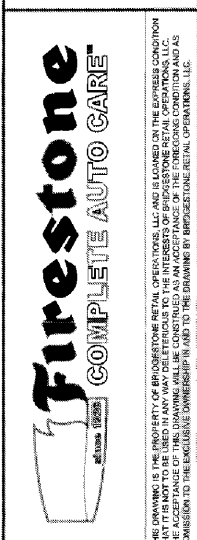
2 DOMESTIC WATER PIPING DIAGRAM
SCALE: N.T.S.



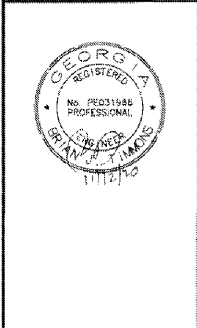
1 WASTE & VENT PIPING DIAGRAM
SCALE: N.T.S.



3 GAS PIPING SCHEMATIC
SCALE: N.T.S.



NEW FCAC STORE
2020 I
283 DAWSONVILLE HIGHWAY SW
GAINESVILLE, GA 30501



ISSUE BLOCK

DATE	REV #
07/20/20	REV #1
10/02/20	REV #2
10/16/20	REV #4
11/13/20	FC

PROPERTY NO.: 160109
6 DIGIT NO.: 908074
4 DIGIT NO.: 78H3
AOR PROJECT NUMBER: 1958555
TO PERMIT: DATE: 04/08/20
TO BID: DATE: ###-###

SHEET TITLE:
PLUMBING SCHEDULES AND RISERS
SHEET NUMBER:

P6