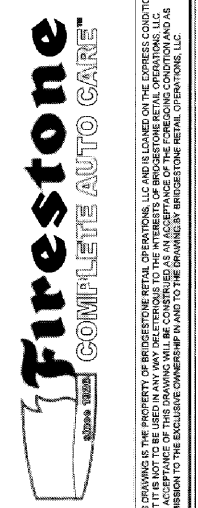


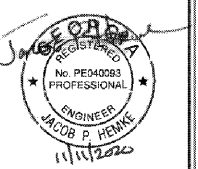


2043 WOODLAND PKWY, SUITE 300
ST. LOUIS, MISSOURI 63146-4235
314-991-2633
www.cceconsultants.com



THIS DRAWING IS THE PROPERTY OF PROJECTS RETAIL OPERATIONS, LLC AND IS LOANED TO THE CONTRACTOR FOR THE PROJECT ONLY. IT IS NOT TO BE REPRODUCED, COPIED, OR TRANSMITTED IN ANY FORM OR BY ANY MEANS, ELECTRONIC OR MECHANICAL, WITHOUT THE WRITTEN PERMISSION OF PROJECTS RETAIL OPERATIONS, LLC. THE ACCEPTANCE OF THIS DRAWING SHALL BE CONSIDERED AS AN ACCEPTANCE OF THE FOREGOING CONDITIONS AND AGREEMENT TO THE EXCLUSIVE CONSULTING PROVIDED TO THE DRAWING BY PROJECTS RETAIL OPERATIONS, LLC.

NEW FCAC STORE
2020 1
283 DAWSONVILLE HIGHWAY SW
GAINESVILLE, GA 30501

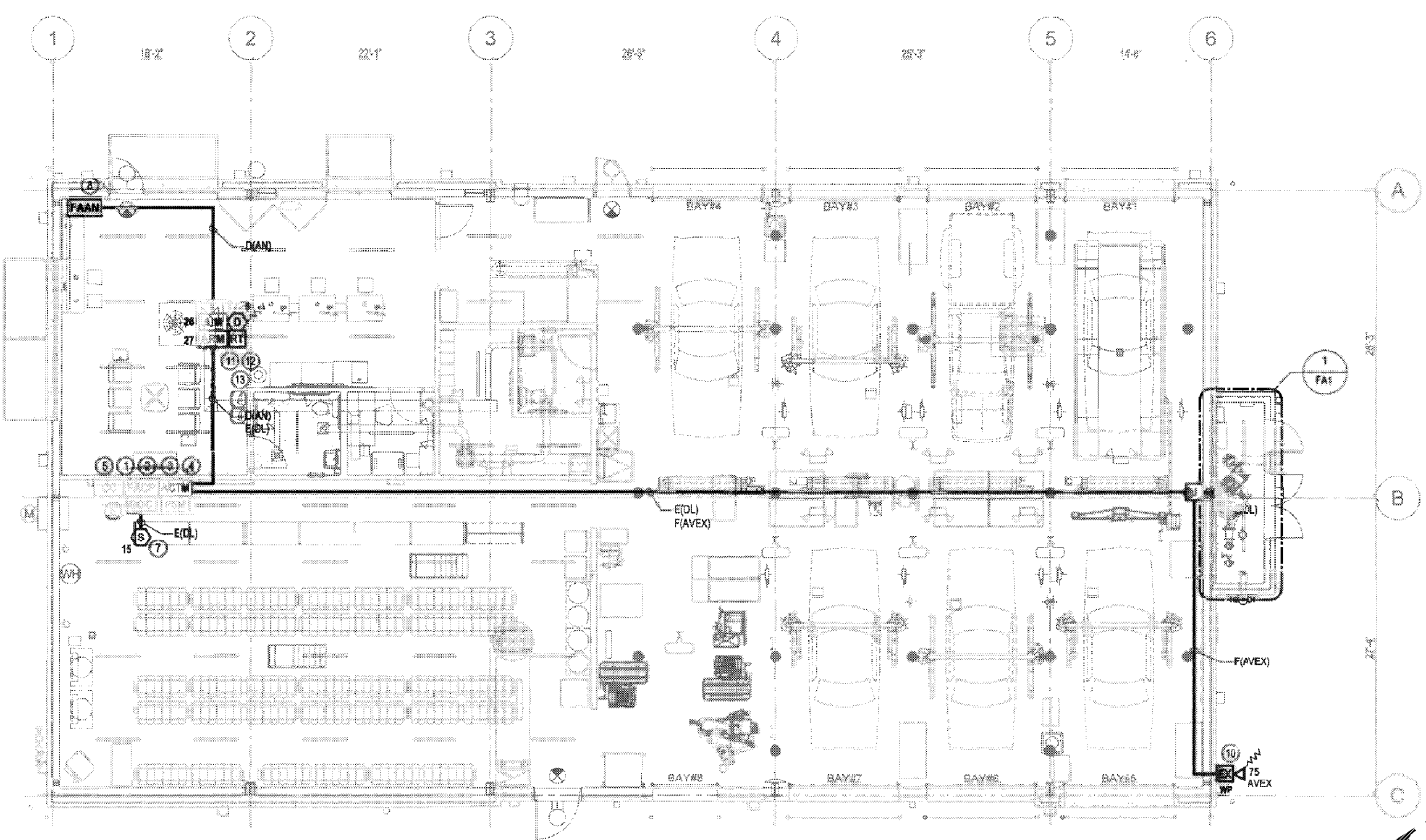


FIRE PROTECTION ENGINEER OF RECORD:
JACOB P. HEIME, PE
LICENSE NO. PE04083
CODE OF REGULATIONS, INC.
2043 WOODLAND PKWY, SUITE 300
ST. LOUIS, MO 63146-4235
PHONE: 314-991-2633
CORPORATE CERTIFICATE OF AUTHORITY NO. PE00090

ISSUE BLOCK	
10/02/20	REV 2
11/13/20	IFC

PROPERTY NO.: 180109
6 DIGIT NO.: 908074
4 DIGIT NO.: 78H3
AOR PROJECT NUMBER: 1955855
TO PERMIT: DATE: 04/09/20
TO BID: DATE: ##-##-##

SHEET TITLE:
FIRE ALARM PLAN AND MATRIX
SHEET NUMBER:
FA1



FIRE ALARM PLAN
SCALE 1/8"=1'-0"
2 1/4 4 8

- SCOPE OF WORK**
- A DEDICATED FUNCTION FIRE ALARM SYSTEM SHALL BE PROVIDED THROUGHOUT THE BRIDGESTONE
 - THE FIRE ALARM SYSTEM SHALL REPORT ALL ALARM, SUPERVISORY, AND TROUBLE SIGNAL TO A REMOTE SUPERVISING STATION.
 - THE FIRE ALARM SYSTEM SHALL CONSIST OF THE FOLLOWING:
 - ONE (1) EXTERIOR AUDIBLE/VISUAL APPLIANCE DIRECTLY ACROSS FROM THE FREE-STANDING FIRE DEPARTMENT CONNECTION
 - ONE (1) MANUAL PULL STATION ADJACENT TO THE FIRE SPRINKLER RISER
 - ONE (1) SMOKE DETECTOR ABOVE THE FACP
 - DUCT DETECTORS IN THE SUPPLY SIDE OF THE RTU
 - REMOTE TEST STATION FOR THE DUCT DETECTOR
 - SHUTDOWN THE AFFECTED RTU
 - FIRE ALARM ANNUNCIATOR ADJACENT TO THE FRONT ENTRANCE
 - POWER LIMITED FIRE ALARM CABLING
 - MONITORING OF THE FIRE SPRINKLER CONTROL VALVES AND WATERFLOW SWITCHES
 - MONITORING OF THE EXTERIOR BACKFLOW OR PIV CONTROL VALVE TAMPER SWITCHES
 - MONITORING OF THE FIRE PUMP CONTROLLER

PROJECT INFORMATION

PROJECT NAME: BRIDGESTONE GAINESVILLE, GA
LOCATION: 283 DAWSONVILLE HIGHWAY SW GAINESVILLE, GA 30501
CONSTRUCTION TYPE: V-B
SQUARE FOOTAGE: 6,116 SQ. FT. 1-STORY
FIRE PROTECTION: SPRINKLERED
BUILDING OCCUPANCY: MIXED USE - MERCANTILE (SHOWING S-1 (INVENTORY AND SERVICE AREA))
OCCUPANT LOAD: PERSONS
SYSTEM TYPE: ADDRESSABLE FIRE ALARM SYSTEM

- APPLICABLE CODES**
- 2018 INTERNATIONAL BUILDING CODE WITH GEORGIA AMENDMENTS
 - 2018 INTERNATIONAL FIRE CODE
 - 2018 INTERNATIONAL MECHANICAL CODE
 - 2017 NATIONAL ELECTRICAL CODE
 - 2019 EDITION NFPA 72 NATIONAL FIRE ALARM AND SIGNALING CODE
- CONFLICTS BETWEEN THE REFERENCE NFPA STANDARDS, FEDERAL OR STATE CODES, SHALL BE BROUGHT TO THE IMMEDIATE ATTENTION OF FIRE PROTECTION ENGINEER (C) FOR RESOLUTION.

- FIRE ALARM WIRING LEGEND**
- | | |
|------------------------|--|
| CONDUCTOR TYPE: | CIRCUIT DESIGNATION: |
| D = 18/4 TP | AN = ANNUNCIATOR KEYPAD CIRCUIT |
| E = 18/2 TP | AV = AUDIBLE/VISUAL NOTIFICATION CIRCUIT |
| F = 14/2 TP | DL = INITIATION DATA CIRCUIT |
| G = AS REQ'D BY MANF. | PW = LOW VOLTAGE POWER CIRCUIT |
| H = 16/2 WET LOCATION | RC = RELAY CONTROL CIRCUIT |
| J = 14/2 WET LOCATION | RT = REMOTE TEST STATION POWER |
| | SU = SUPERVISORY CIRCUIT |
| | ZN = INITIATION ZONE CIRCUIT |
- CONDUCTOR TYPE
— CIRCUIT DESIGNATION
— CIRCUIT NUMBER
- SHOULD MANUFACTURER OF FIRE ALARM EQUIPMENT REQUIRE A DIFFERENT TYPE OR SIZE OF CABLE THAN HEREIN SPECIFIED, THE LARGER OR MORE STRINGENT TYPE OF CABLE SHALL BE USED.

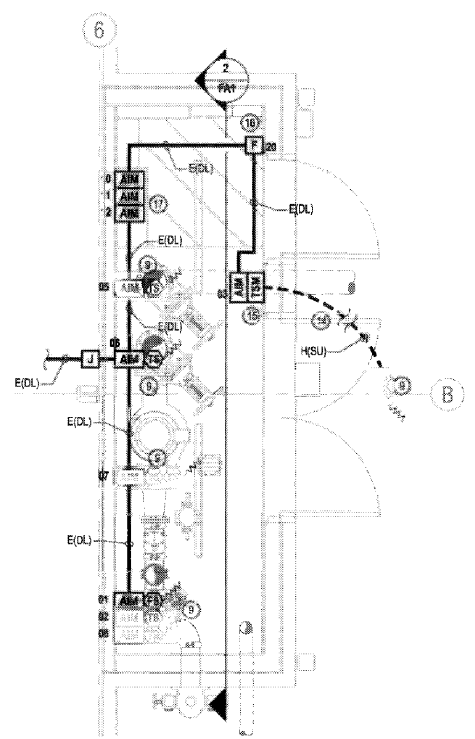
FIRE ALARM SYMBOL KEY	QTY.
FACP ADDRESSABLE FIRE ALARM CONTROL PANEL (FIRE-LITE ES-50X) (IN RED ENCLOSURE)	1
FAAN FIRE ALARM LCD ANNUNCIATOR (FIRE-LITE ANN-80)	1
CC CELLULAR COMMUNICATOR (FIRE-LITE HWF2-COM)	1
DOC DOCUMENTATION CABINET (SPACE AGE ELECTRONIC PAD ACE-11)	1
AIM ADDRESSABLE INPUT MODULE (FIRE-LITE IMF-300)	11
ARM ADDRESSABLE RELAY MODULE (FIRE-LITE CRF-300)	1
TSM TRANSIENT SUPPRESSION MODULE (DITEX DTK-1VLP-X)	1
ACTM 120 VAC TRANSIENT SUPPRESSION MODULE (DITEX DTK-120HW)	1
PSM PHONE LINE SUPPRESSION MODULE (ELX-855 OR EQUAL)	1
F ADDRESSABLE DUAL ACTION MANUAL FULL STATION (FIRE-LITE 500)	1
S ADDRESSABLE PHOTOELECTRIC SMOKE DETECTOR (FIRE-LITE SD385)	1
D DUCT TYPE PHOTOELECTRIC SMOKE DETECTOR (FACTORY PROVIDED AND POWERED BY RTU) (S = SUPPLY SIDE / R = RETURN SIDE)	1
RT REMOTE TEST STATION / ANNUNCIATOR (SYSTEM SENSOR RTS151KEY)	1
FS FLOW SWITCH (BY OTHERS)	1
TS TAMPER SWITCH (BY OTHERS)	6
EX WALL MOUNTED RED EXTERIOR AUDIBLE/VISUAL APPLIANCE (XX = CANDELA RATING) (WP = WEATHERPROOF) (SYSTEM SENSOR F2RX)	1
— FIRE ALARM CONDUCTORS (RED IN COLOR)	
--- FIRE ALARM CONDUCTORS LISTED FOR WET LOCATION IN UNDERGROUND CONDUIT (1 INCH MINIMUM)	
J JUNCTION BOX	
~::~ END OF LINE RESISTOR	

FIRE ALARM SHEET INDEX

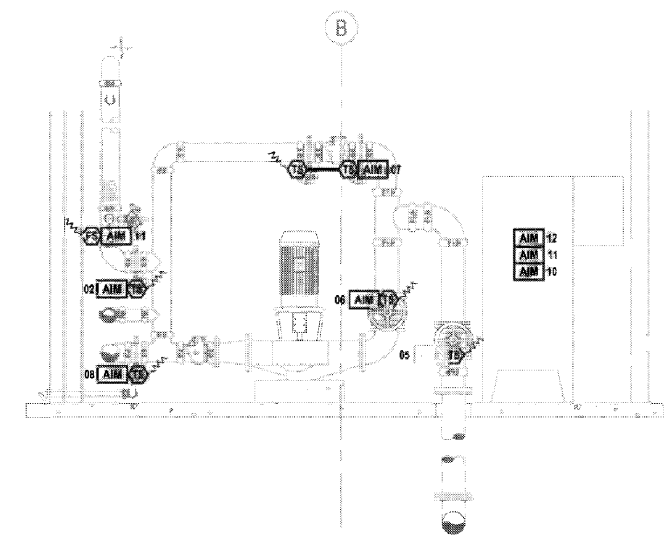
SHEET #	DESCRIPTION
FA1	FIRE ALARM PLAN AND MATRIX
FA2	FIRE ALARM NOTES, PROGRAMMING AND CALCULATIONS
FA3	FIRE ALARM DETAILS
FA4	FIRE ALARM CONTROL PANEL LAYOUT

FIRE ALARM MATRIX

	ACTIVATED ALARM CONDITION AT FIRE ALARM CONTROL PANEL	ANNUNCIATES ALARM CONDITION AT REMOTE FIRE ALARM ANNUNCIATOR	TRANSmits POINT SPECIFIC ALARM SIGNAL TO APPROVED REMOTE SUPERVISING STATION	ANNUNCIATES SUPERVISORY CONDITION AT FIRE ALARM CONTROL PANEL	TRANSmits POINT SPECIFIC SUPERVISORY SIGNAL TO APPROVED REMOTE SUPERVISING STATION	ACTIVATES EXTERIOR NOTIFICATION PLUNK	SHUTS DOWN IMC UNIT
FIRE SPRINKLER SYSTEMS							
- WATERFLOW SWITCHES							
- CONTROL VALVE TAMPER SWITCHES							
- EXTERIOR BACKFLOW PREVENTER TAMPER SWITCHES							
FIRE PUMP MONITORING (ELECTRIC)							
- PUMP RUNNING							
- PHASE REVERSAL							
- LOSS OF PHASE (POWER FAILURE)							
MANUAL PULL STATION							
- ADJACENT TO THE FIRE SPRINKLER							
SMOKE DETECTION DEVICES							
- ABOVE FACP							
- AIR HANDLING UNIT - SUPPLY SIDE							
LOSS OF PRIMARY POWER AT THE FACP							
ABNORMAL CIRCUIT (OPEN, GROUND FAULT, SHORT) OR DEVICE							



ENLARGED FIRE PUMP ROOM FIRE ALARM PLAN
SCALE 1/8"=1'-0"
2 1/4 4 8



FIRE PUMP ELEVATION FIRE ALARM PLAN
SCALE 1/8"=1'-0"
2 1/4 4 8