

FLOOR FINISH KEY	
NOTE:	SUPPLIED AND INSTALLED BY GENERAL CONTRACTOR, UNLESS OTHERWISE NOTED.
SC:	SEALED CONCRETE, REFER TO SPECIFICATION
RB:	RESILIENT BASE, 6" WALL BASE (BLACK)

ROOM FINISH SCHEDULE		FLOOR																		WALLS																		CEILING			NOTES
ROOM NO.	ROOM NAME	MAT'L	FIN.	LEFT	FIN.	BASE	TOP	FIN.	BASE	RIGHT	FIN.	BASE	BOTTOM	FIN.	BASE	MAT'L	FIN.	HEIGHT																							
100	CUSTOMER SHOWROOM	CONC.	SEALED	GYP. BD.	SEE F2	RB	GYP. BD.	SEE F2	RB	GYP. BD.	SEE F2	RB	GYP. BD.	SEE F2	RB	O.T.S.	PT-4	-	SEE RF2, RF3, RF8																						
101	UNISEX TOILET	CONC.	SEALED	GYP. BD./FRP	SEE A9	RB	GYP. BD./FRP	SEE A9	RB	GYP. BD./FRP	SEE A9	RB	GYP. BD./FRP	SEE A9	RB	GYP. BD.	PT-3	8'-0"	SEE RF2, RF4, RF8, RF8																						
102	OFFICE	CONC.	SEALED	GYP. BD.	SEE A9	RB	GYP. BD.	SEE A9	RB	GYP. BD.	SEE A9	RB	GYP. BD.	SEE A9	RB	O.T.S.	PT-4	-	SEE RF2, RF3, RF8																						
103	SHOP TOILET	CONC.	SEALED	GYP. BD./FRP	SEE A9	RB	GYP. BD./FRP	SEE A9	RB	GYP. BD./FRP	SEE A9	RB	GYP. BD./FRP	SEE A9	RB	GYP. BD.	PT-3	8'-0"	SEE RF2, RF4, RF8, RF8																						
104	BREAK AREA	CONC.	SEALED	GYP. BD./FRP	SEE A9	RB	GYP. BD./FRP	SEE A9	RB	GYP. BD./FRP	SEE A9	RB	GYP. BD./FRP	SEE A9	RB	GYP. BD.	PT-4	8'-0"	SEE RF2, RF3, RF4, RF8, RF7, RF8																						
105	SERVICE BAYS	CONC.	SEALED	PLYWD.	SEE A9	-	PLYWD.	SEE A9	-	PLYWD.	SEE A9	-	PLYWD.	SEE A9	-	O.T.S.	PT-4	-	SEE RF1, RF3, RF5, RF7, RF8																						
106	INVENTORY	CONC.	SEALED	PLYWD.	SEE A9	-	PLYWD.	SEE A9	-	PLYWD.	SEE A9	-	PLYWD.	SEE A9	-	O.T.S.	PT-4	-	SEE RF2, RF3, RF5, RF7, RF8																						
107	UTILITY AREA	CONC.	SEALED	PLYWD.	SEE A9	-	PLYWD.	SEE A9	-	OPEN	SEE A9	-	OPEN	SEE A9	-	O.T.S.	PT-4	-	SEE RF2, RF3, RF5, RF7, RF8																						
117	FIRE PUMP	CONC.	SEALED	PLYWD.	SEE A9	-	PLYWD.	SEE A9	-	PLYWD.	SEE A9	-	PLYWD.	SEE A9	-	O.T.S.	PT-3	-	SEE RF5, RF7																						

ROOM FINISH REMARKS

RF1. SERVICE AREA PAINT SCHEME
- ALL GIRTS, COLUMNS, PURLINS AND METAL BUILDING STRUCTURE TO BE PRIMED BY METAL BUILDING MANUFACTURER
- PAINT FROM DIMENSION: FLOOR TO 5'-4" AFF PT-4
- PAINT FROM DIMENSION: 5'-4" AFF TO STRUCTURE PT-1
- PAINT ALL EXPOSED CONDUITS, J-BOXES AND EXPOSED SURFACES VISIBLE TO PUBLIC VIEW PIPING FOR AIR, AND SPRINKLER SYSTEMS ARE NOT TO BE PAINTED. DUCT WORK TO BE PAINT PT-4.

RF2. ALL EXPOSED GIRTS, COLUMNS, GIRTS AND METAL BUILDING STRUCTURE TO BE PRIMED. PAINT EXPOSED STRUCTURE AS NOTED ON SHEET A2.
USE SHERWIN WILLIAMS WATER BASED CATALYZED EPOXY FOR WALLS. THIS IS A 2-PART PAINT WITH (PART A# / PART B#) = (B70W0211 w/ epoxy hardener B60V25)
PROVIDE YELLOW SAFETY STRIPING AS SHOWN ON PLANS.
FRP COLOR: VIK #1276 SATIN LINEN TEXTURE FINISH (WALL PRIMER REQUIRED)
PROVIDE WHITE FACED INSULATION AT ROOF DECK TO COMPLY WITH 2015 IECC.
PROVIDE BLACK FACED INSULATION AT ROOF DECK TO COMPLY WITH 2015 IECC.

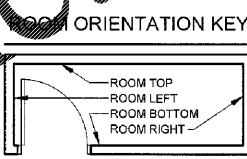
ROOM SCHEDULE MATERIAL KEY	
MAT'L	DESCRIPTION
CONC.	CONCRETE
SEALED	CONCRETE WITH APPLIED SEALER
GYP. BD.	GYP. BOARD
O.T.S.	OPEN TO STRUCTURE

PAINT COLOR SCHEDULE:

NOTE: ALL COLOR NAMES INDICATED ARE FOR SELECTION PURPOSES ONLY. SEE PAINT SPECS FOR SPECIFIC REQUIREMENTS

DESCRIPTION: (ALL "SHERWIN / WILLIAMS" NUMBERS 'SW' & 'CC'-CUSTOM COLORS)

KEY:	COLOR:	S.W. #
PT-1	"REFLECTION"	-SW7661
PT-2	NOT USED	
PT-3	"PURE WHITE"	-SW7005
PT-4	"IRON ORE"	-SW7069
PT-5	"SAFETY RED"	-CUSTOM COLOR
PT-6	"ANTIQUÉ WHITE"	-SW6119
PT-7	"BLACK"	-SW4090
PT-8	"SAFETY YELLOW"	-SW4084
PT-9	"ROW HOUSE TAN"	-SW7898
PT-10	"LATTÉ"	-SW6106
PT-11	"ITALPEIA"	-SW6088
PT-12	"RUGGED BROWN"	-SW6092
PT-13	"SAFETY RED"	-SW4081
PT-20	"MORNING FOG"	-SW6255
PT-21	"CROSSROADS"	-SW3521
PT-22	"EMPIRE GOLD"	-SW0012



PT-5 "SAFETY RED" CUSTOM MATCH					
CCE	COLORANT	OZ	32	64	128
R4	NEW RED	10	63	1	1
ONE GALLON: K43R00058		PRIMARY RED: 650097140			
EXTERIOR RESILIENCE SATIN					

S&S
S&S Design Group, P.C.
Mitchel R. Garrett, Architect
Georgia Registration # RA013602
1437 South Boulder, Suite 650
Tulsa, Oklahoma 74119 3609
p. 918.587.8600
f. 918.587.8601
www.ssgdesigngroup.com

Firestone COMPLETE AUTO CARE
SHERWIN WILLIAMS
THIS DRAWING IS THE PROPERTY OF REDSTONE RETAIL OPERATIONS, LLC AND IS LOANED TO THE EXPRESS CONDITION THAT IT IS NOT TO BE REPRODUCED OR TRANSMITTED IN ANY FORM OR BY ANY MEANS, ELECTRONIC OR MECHANICAL, INCLUDING PHOTOCOPYING, RECORDING, OR BY ANY INFORMATION STORAGE AND RETRIEVAL SYSTEM. THE ACCEPTANCE OF THIS DRAWING SHALL BE CONSIDERED AS AN ACCEPTANCE OF THE FOREGOING CONSENT AND AS ADMISSION TO THE EXCLUSIVE JURISDICTION OF REDSTONE RETAIL OPERATIONS, LLC.

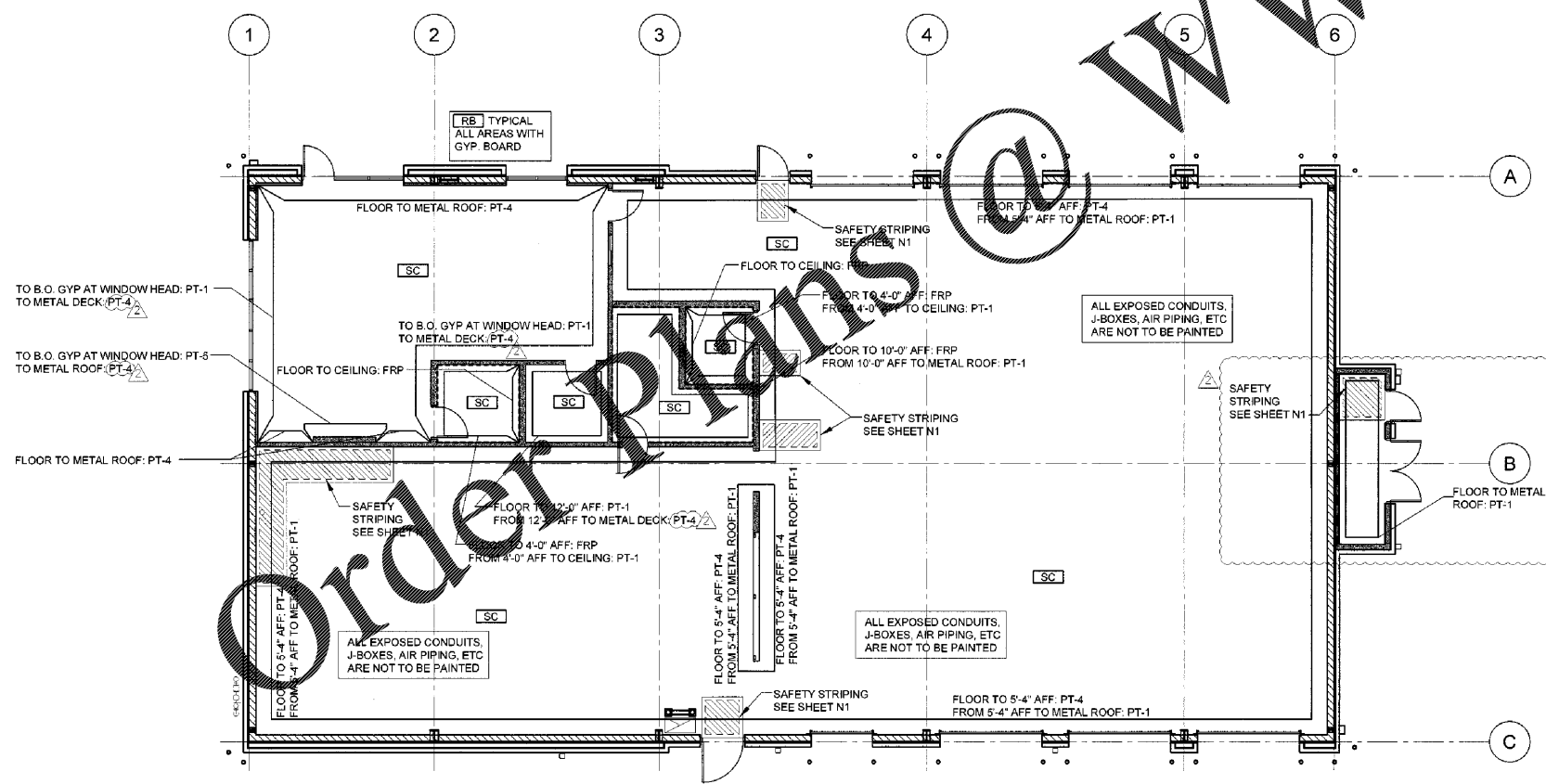
NEW FCAC STORE
2020 I
283 DAWSONVILLE HIGHWAY SW
GAINESVILLE, GA 30501

STATE OF GEORGIA
MITCHEL R. GARRETT
REGISTERED PROFESSIONAL ARCHITECT
11.13.2020

ISSUE BLOCK	
△	10/02/20 REV #2
△	11/13/20 IFC

PROPERTY NO.: 160109
6 DIGIT NO.: 908074
4 DIGIT NO.: 78H3
AOR PROJECT NUMBER: 1955B55
TO PERMIT: DATE: 04/08/20
TO BID: DATE: ###-##-##
KMP

SHEET TITLE:
ROOM FINISH SCHEDULE & FINISH PLAN
SHEET NUMBER:
A9



2 WALL/FLOOR FINISH PLAN
A9 SCALE: 1/8"=1'-0"

WWW.LDILine.com