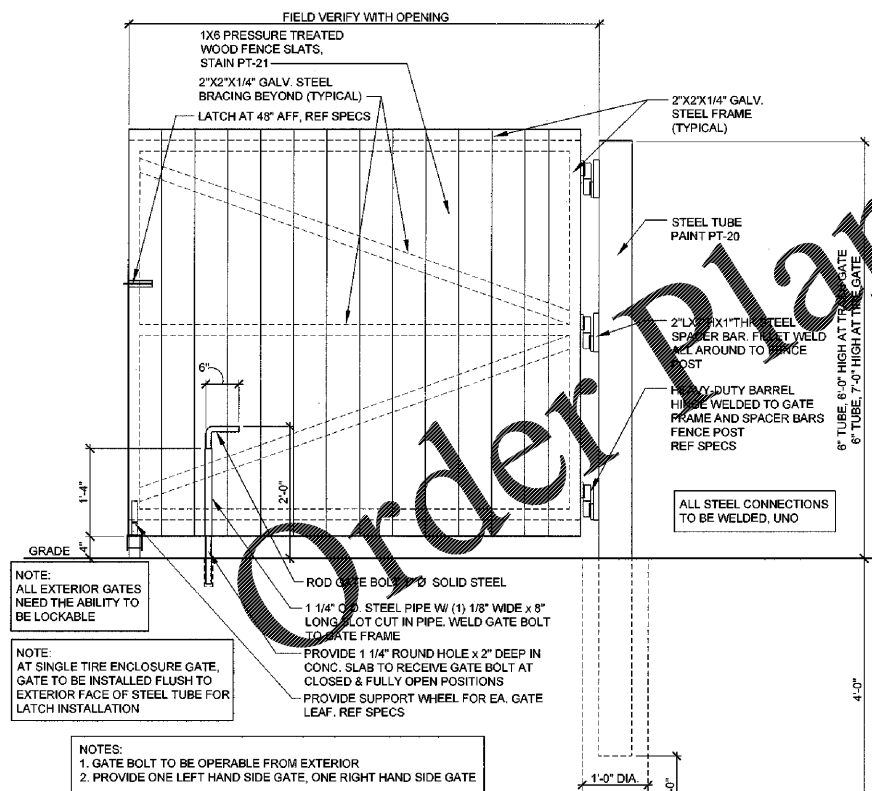
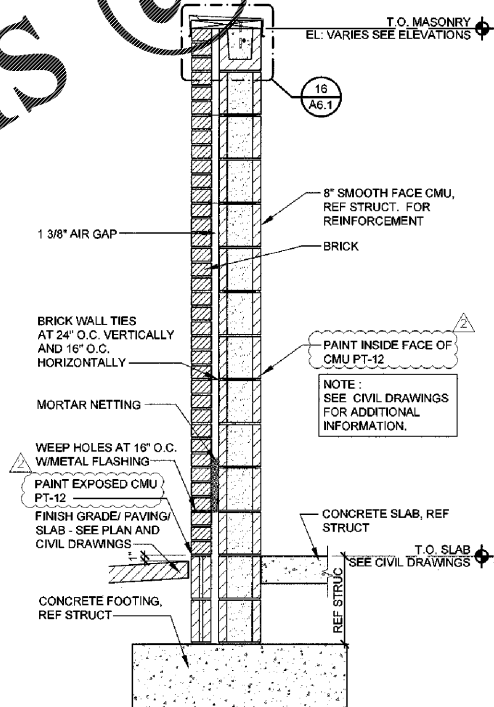


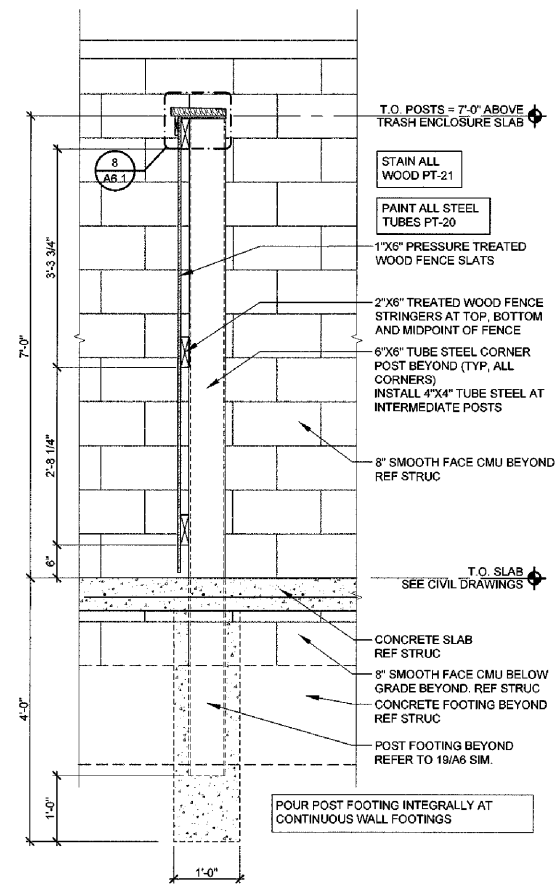
**1 TRASH/TIRE ENCLOSURE PLAN**  
A6.1 SCALE: 1/4"=1'-0"



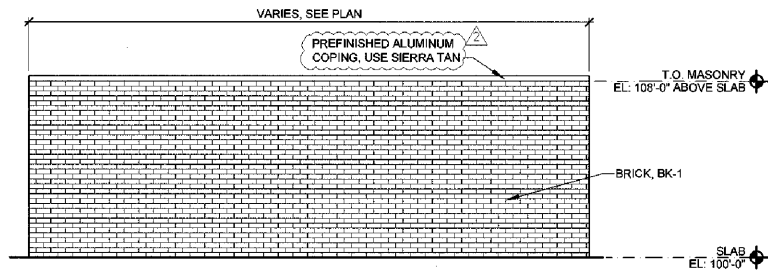
**17 TRASH/TIRE GATE ELEVATION**  
A6.1 SCALE: 3/4"=1'-0"



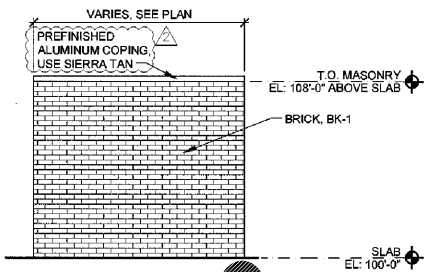
**22 MASONRY SECTION**  
A6.1 SCALE: 3/4"=1'-0"



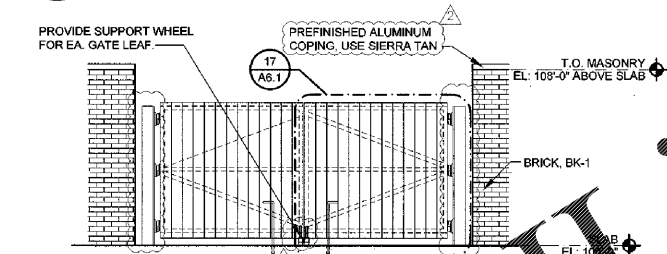
**23 FENCE SECTION**  
A6.1 SCALE: 3/4"=1'-0"



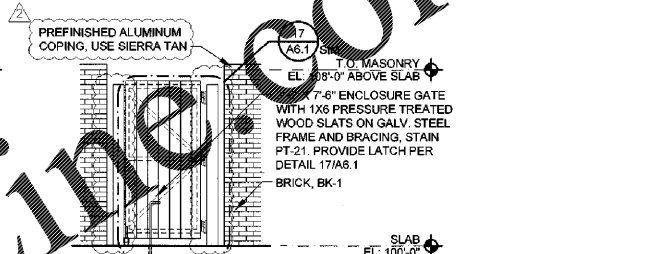
**4 TRASH/TIRE ENCLOSURE ELEV.**  
A6.1 SCALE: 1/4"=1'-0"



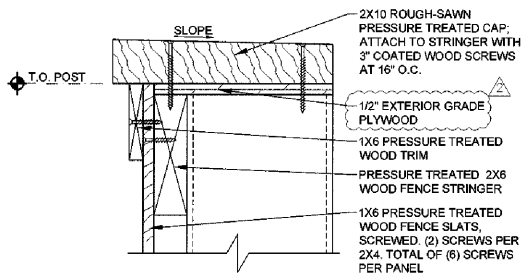
**5 TYPICAL TRASH/TIRE ENCLOSURE ELEV.**  
A6.1 SCALE: 1/4"=1'-0"



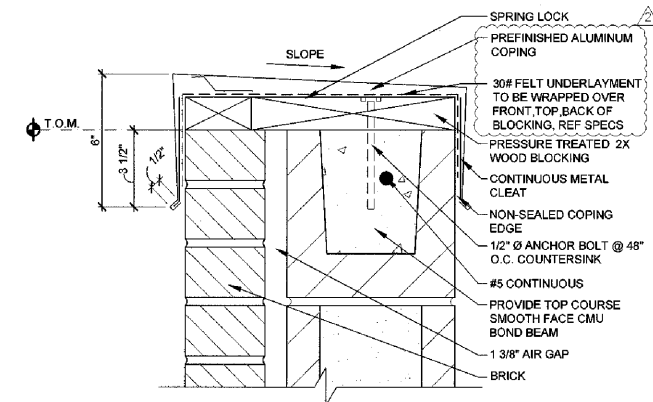
**6 TRASH/TIRE ENCLOSURE ELEV.**  
A6.1 SCALE: 1/4"=1'-0"



**7 TRASH/TIRE ENCLOSURE ELEV.**  
A6.1 SCALE: 1/4"=1'-0"



**8 TRASH ENCLOSURE FENCE CAP DETAIL**  
A6.1 SCALE: 3"=1'-0"



**16 TRASH ENCLOSURE MASONRY CAP DETAIL**  
A6.1 SCALE: 3"=1'-0"

**SGA Design Group, P.C.**  
Michel R. Garrett, Architect  
Georgia Registration #: RA13362  
1437 South Boulder, Suite 850  
Tulsa, Oklahoma 74119-3609  
P: 918.997.8600  
F: 918.997.8601  
www.sga-design.com

**Firestone COMPLETE AUTO CARE**  
1800-333-3333

**NEW FCAC STORE**  
2020 I  
283 DAWSONVILLE HIGHWAY SW  
GAINESVILLE, GA 30501

STATE OF GEORGIA  
MICHEL R. GARRETT  
REGISTERED PROFESSIONAL ARCHITECT  
11/13/2020

ISSUE BLOCK	
10/02/20	REV #2
11/13/20	IFC

PROPERTY NO: 160109  
6 DIGIT NO: 98074  
4 DIGIT NO: 78H3  
AOR PROJECT NUMBER: 1965B55  
TO PERMIT: DATE: 04/08/20  
TO BID: DATE: ##-##-##  
KMP

SHEET TITLE:  
**TRASH/TIRE ENCLOSURE DETAILS**

SHEET NUMBER:  
**A6.1**