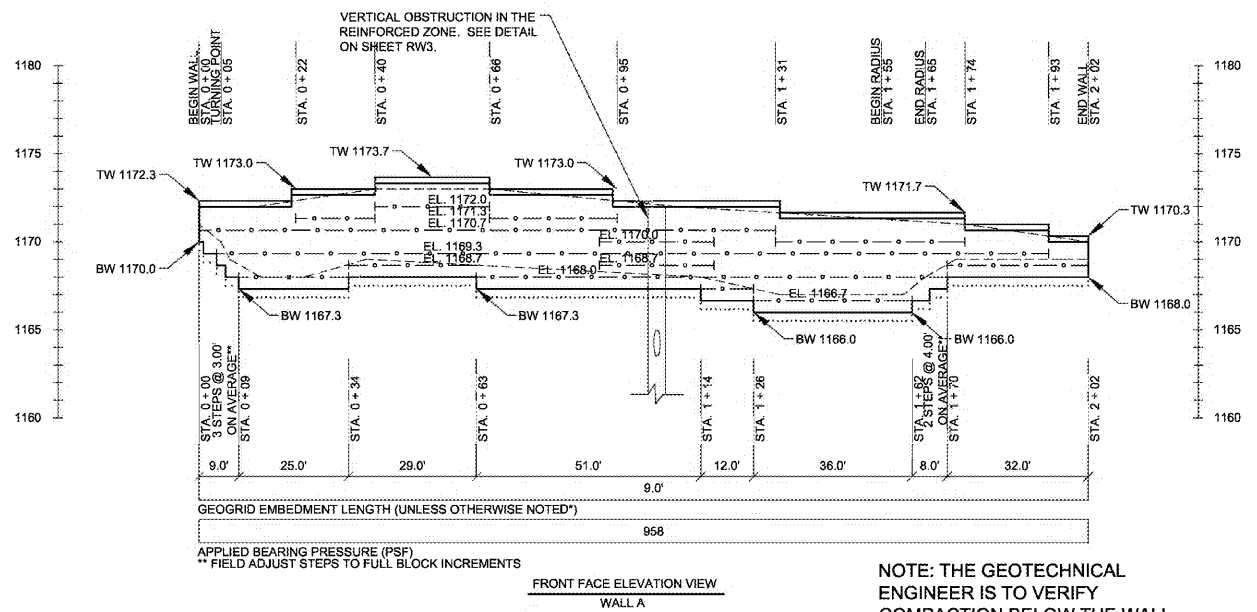


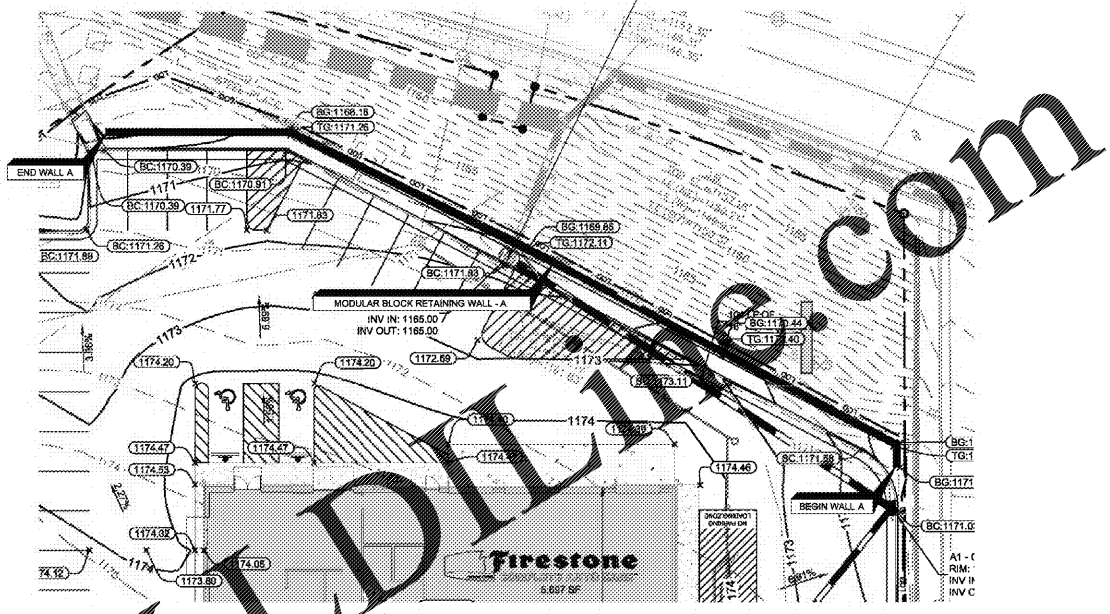


NOTE: CONSTRUCTION VERIFICATION OF THE WALL INSTALLATION BY AN ENGINEER IS REQUIRED AND MUST BE PROVIDED BY A KNOWLEDGEABLE GEOTECHNICAL ENGINEER FAMILIAR WITH MECHANICALLY STABILIZED STRUCTURES.

NOTE: THE MANHOLE IS TO BE RELOCATED A MINIMUM OF 5' BEHIND THE FACE OF THE WALL.



NOTE: THE GEOTECHNICAL ENGINEER IS TO VERIFY COMPACTION BELOW THE WALL.



PLAN VIEW  
NOT TO SCALE

THE ABOVE PLAN VIEW HAS BEEN COPIED FROM CIVIL SITE PLANS PREPARED BY KIMLEY HORN DATED 03/17/2020 FOR REFERENCE. REFER TO CIVIL SITE PLANS FOR STRUCTURE LAYOUT INFORMATION. MODULAR BLOCK WALL LAYOUT SHALL BE APPROVED BY THE CIVIL SITE DESIGNER PRIOR TO CONSTRUCTION. THE TOP OF WALL LOCATION IS SHOWN. THE SURVEYOR SHALL ADJUST THE BOTTOM OF WALL LOCATION TO ACCOUNT FOR WALL BATTER.

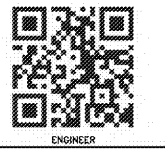
LEGEND	
BW	BOTTOM OF WALL
TW	TOP OF WALL
---	GRADE LINE
*X.X'	ALTERNATE REINFORCEMENT LENGTH
---	CHANGE IN EMBEDMENT LENGTH OR REINFORCEMENT TERMINATION
EL. XX.X	REINFORCEMENT ELEVATION
---	GEOGRID TYPE 1 REINFORCEMENT
---	LEVELING PAD
REFER TO RW1 FOR GEOGRID REINFORCEMENT OPTIONS	

REVISION / ISSUE	
NO.	DESCRIPTION
1	ISSUE FOR CONSTRUCTION

DRAWN BY:	GRC
DESIGNED BY:	CWL
CHECKED BY:	LGP
DATE:	04/03/20
SCALE:	
AS NOTED:	

**PALMETTO FLOWERY BRANCH-WINDER HWY LLC**  
P.O. 1615  
THOMASVILLE, GA, 31799  
TEL: (678) 576-5190  
CLIENT

**ENGINEERED EARTH SOLUTIONS, LLC**  
441 CREEKSTONE RIDGE  
WOODSTOCK, GEORGIA 30188  
TEL: (770) 582-2850 FAX: (770) 582-2853  
EMAIL: ENGINEERING@EESOLS.COM  
ENGINEERED EARTH SOLUTIONS.COM



ENGINEER

GA

FIRESTONE

GAINESVILLE

PLAN, DETAIL, & ELEVATION VIEW SHEET

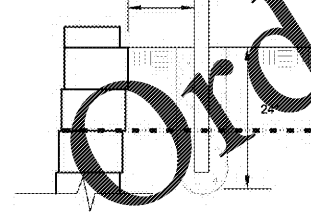
SHEET  
**RW2**  
OF 3

PROJECT NO.: Z20-0256

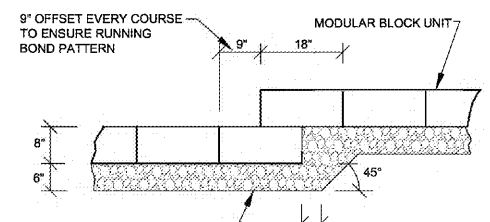
THIS DESIGN IS BASED UPON SPECIFIC PROPERTIES OF MATERIALS WHICH ARE PROPRIETARY. ANY SUBSTITUTION OF THE SPECIFIED PRODUCTS OR CHANGE IN STRUCTURE GEOMETRY WILL INVALIDATE THIS DESIGN. THIS DRAWING IS BEING FURNISHED FOR USE ON THIS SPECIFIC PROJECT ONLY. ANY PARTY ACCEPTING THIS DOCUMENT DOES SO IN CONFIDENCE AND AGREES THAT IT SHALL NOT BE DUPLICATED, IN WHOLE OR IN PART, NOR DISCLOSED TO OTHERS WITHOUT THE CONSENT OF ENGINEERED EARTH SOLUTIONS, LLC. THIS DRAWING, DESIGN NOTES, AND ASSOCIATED CALCULATIONS HAVE BEEN PREPARED BY ENGINEERED EARTH SOLUTIONS, LLC. FROM INFORMATION PROVIDED BY OTHERS. FINAL DETERMINATION OF THE SUITABILITY OF ANY INFORMATION CONTAINED HEREIN IS THE RESPONSIBILITY OF THE USER.

COPYRIGHT © 2020 ENGINEERED EARTH SOLUTIONS, LLC.

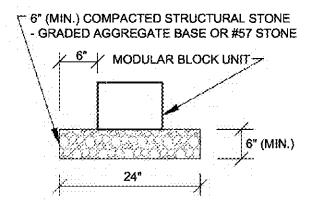
PERMANENT PEDESTRIAN FENCE POST SECURED IN CONCRETE (AUGER 6" MAX. HOLE THROUGH GEOGRID OR INSTALL 6" SONOTUBE DURING WALL CONSTRUCTION, 4" O.C. MIN.)



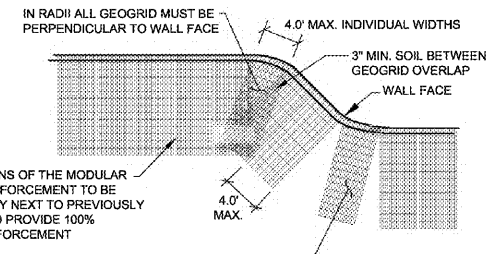
TYPICAL FENCE POST INSTALLATION  
NOT TO SCALE



TYPICAL LEVELING PAD STEP  
NOT TO SCALE



LEVELING PAD CROSS-SECTION  
NOT TO SCALE



PRIMARY GEOGRID PLACEMENT  
ON CURVES  
NOT TO SCALE

