

THIS BLOCK IS RESERVED FOR THE CLERK OF THE SUPERIOR COURT

PROPERTY TIE:
S 79°58'57" W 332.70'
FROM THE CENTERLINE OF
PEARL NIX PARKWAY &
DAWSONVILLE HIGHWAY
G.D.O.T. STATION 19+71.81
& STATION 13+59.79
N:1563201.05
E:2393996.97

DAWSONVILLE HIGHWAY
(STATE ROUTE 53 CONNECTOR)
(ORIGIN: WORTH-CO-WAY MAP
PROJECT NH-06-336) LAST REVISED OCTOBER 7TH, 1994 - SHEETS 4 & 5
(PER GEORGIA DEPARTMENT OF TRANSPORTATION RIGHT-OF-WAY MAP)

(THE LINE)
(MEASURED)
R=1339.63'
L=60.47'
Δ=2°35'10"
C BRG=N 82°14'05" E
C DIST=60.46'

D1
TOP EL.=160.70'
E.(E/W)=156.40'
E.(S)=1156.47'
C DIST=38.05'
R=1330.92'
L=98.62'
Δ=4°14'47.5"

(MEASURED) (R/W MAP)
R=1339.63'
L=60.47'
Δ=2°35'10"
C BRG=N 82°14'05" E
C DIST=60.46'

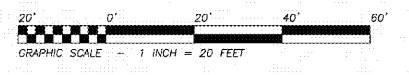
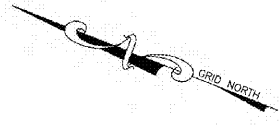
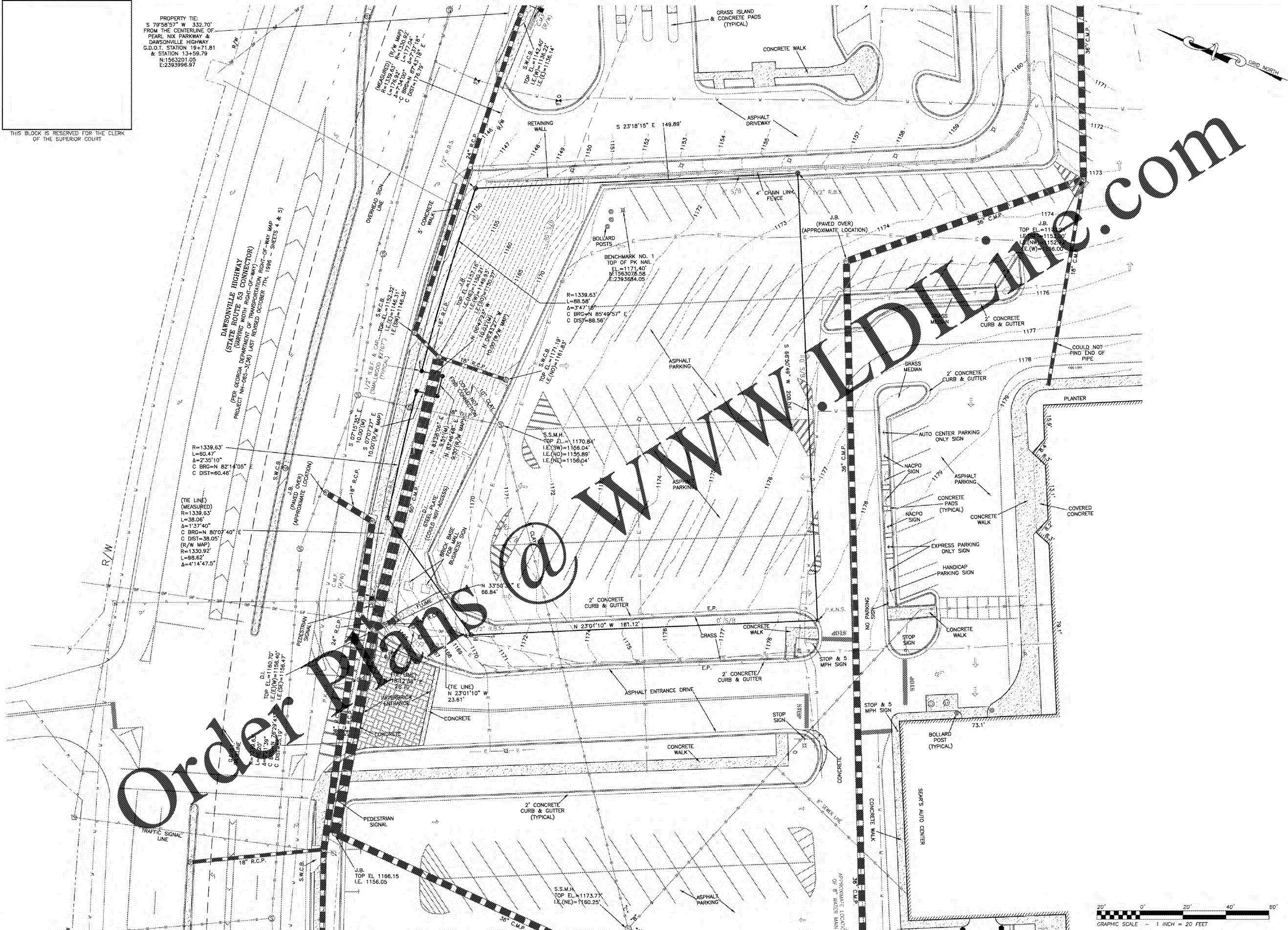
R=1339.63'
L=88.58'
Δ=3°47'18"
C BRG=N 85°49'57" E
C DIST=88.56'

S.S.M.H.
TOP EL.=1170.84'
E.(S/W)=1166.04'
E.(N)=1156.04'

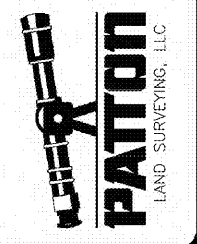
(TIE LINE)
N 23°01'10" W 181.12'
N 23°01'10" W 23.61'

S.S.M.H.
TOP EL.=1173.77'
E.(NE)=1160.25'

Order Plans @ www.lpdilme.com



REGISTERED PROFESSIONAL
LAND SURVEYORS
P.O. BOX 256
GAINESVILLE, GA. 30503
PHONE: (770) 532-6492
FAX: (770) 532-1995
www.pattonsurveying.com



COMPUTATIONS BY: C.H.K.
SURVEYED BY: B.H. & J.H.
DRAFTED BY: C.H.K.
CHECKED BY: C.M.P.

SUBDIVIDE/TOPOGRAPHIC SURVEY FOR:
PALMETTO CAPITAL GROUP
- LOCATED IN -
LAND LOT 164
9TH LAND DISTRICT
CITY OF GAINESVILLE
HALL COUNTY, GEORGIA

REVISIONS

NO.	DATE	DESCRIPTION

SHEET NUMBER:
2 of 2
SCALE: 1" = 20'
SURVEY DATE: 10/18/2019
PLAT DATE: 10/21/2019
19-123.dwg
JN. 19-123