

METRO TRANSITION CENTER BATHROOM RENOVATIONS
 BUILDING A & C



GA DEPARTMENT OF CORRECTIONS
 300 PATROL DRIVE
 PO BOX 1529
 FORTSYTH, GA 31029



CERTIFICATIONS

DATE	NO.	BY

CONSULTANT

DATE	NO.	DESCRIPTION

REVISIONS

DATE	NO.	DESCRIPTION
5/26/20	1	FOR CONSTRUCTION

RELEASES

COPYRIGHT ©2019 RAYMOND ENGINEERING GA, INC. ALL RIGHTS RESERVED. THIS DRAWING AND ITS REPRODUCTIONS ARE THE PROPERTY OF RAYMOND ENGINEERING GEORGIA, INC. & MAY NOT BE REPRODUCED, PUBLISHED, OR USED IN ANY WAY WITHOUT THE PERMISSION OF RAYMOND ENGINEERING GEORGIA, INC. RETURN PRINTS TO RAYMOND ENGINEERING GEORGIA, INC. UPON COMPLETION OF USE FOR WHICH THEY WERE ISSUED.

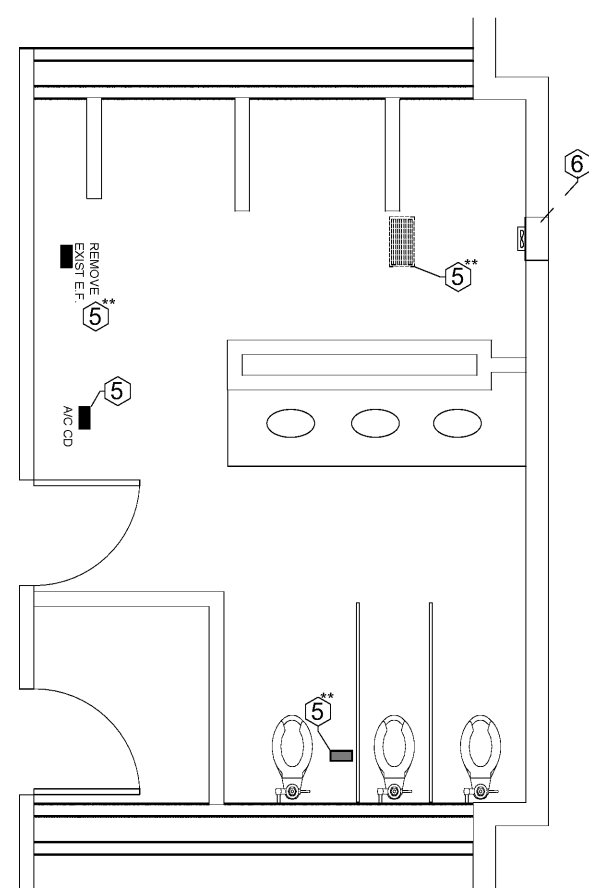
PROJECT NO.:	1080.022
DESIGN BY:	---
DRAWN BY:	EB
CHECKED BY:	---

BATHROOM 150 FLOOR PLAN - BUILDING A

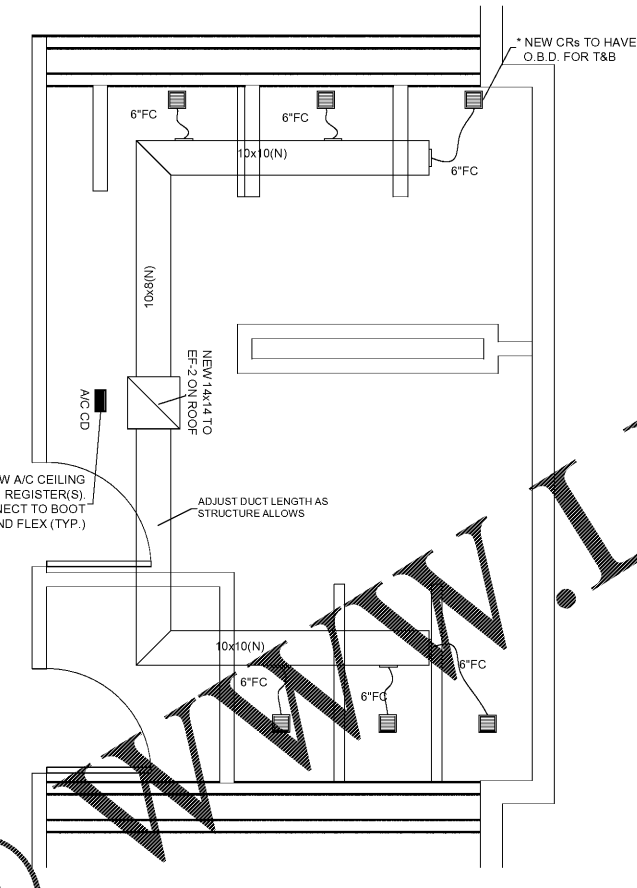
M102

DEMOLITION NOTES

- DEMOLITION / CONSTRUCTION NOTES
- REMOVE ALL EXISTING SANITARY LINES UPSTREAM FROM THIS POINT. PREPARE FOR NEW CONNECTION (PLUMBING)
 - REMOVE ALL EXISTING SANITARY VENT LINES UPSTREAM FROM THIS POINT. PREPARE FOR NEW CONNECTION (PLUMBING)
 - REMOVE ALL EXISTING DOMESTIC WATER LINES DOWNSTREAM FROM THIS POINT. PREPARE FOR NEW CONNECTION (PLUMBING)
 - REMOVE ALL EXISTING PLUMBING FIXTURES. REPLACE WITH NEW. SEE SPECS FOR DETAILS. ** DENOTES RELOCATION OF FIXTURE/PLUMBING AS INDICATED (PLUMBING).
 - REMOVE ALL EXISTING DUCT AND REGISTER(S) DOWNSTREAM FROM THIS POINT. PREPARE FOR NEW CONNECTION. ** REMOVE ALL EXISTING DUCT (MECHANICAL).
 - REPLACE EXISTING A/C F. WITH NEW ROOF MOUNTED UNIT. SEE SCHEDULE 1 FOR DETAILS. (MECHANICAL).



1 EXISTING BATHROOM 150 MECHANICAL PLAN - BUILDING A
 SCALE: 1/2" = 1'-0"

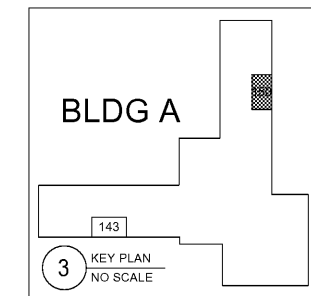


2 NEW BATHROOM 150 MECHANICAL PLAN - BUILDING A
 SCALE: 1/2" = 1'-0"

EXHAUST FAN SCHEDULE

ITEM#	1	2	3	4
FAN TAG	EF-1A	EF-2A	EF-1	EF-2
MANUFACTURER	LOREN-COOK	LOREN-COOK	LOREN-COOK	LOREN-COOK
MODEL NUMBER	100C17DEC	100C17DEC	135SQ10D	135SQ10D
LOCATION	ROOF	ROOF	CEILING	CEILING
AREA SERVED	RR# 143 / BLG A	RR# 150 / BLG A	RR#360 / BLG C	RR# 345 / BLG C
FAN TYPE	DOWNBLAST	DOWNBLAST	AXIAL	AXIAL
CFM	700	700	1250	1250
DRIVE TYPE	DIRECT	DIRECT	DIRECT	DIRECT
MOTOR HP	1/6	1/6	1/6	1/6
ELECTRICAL INFO	115V-1Ph-60Hz	115V-1Ph-60Hz	115V-1Ph-60Hz	115V-1Ph-60Hz
ELECT PANEL	C	B	N/A	N/A
NOTES	NEW	NEW	SERVICE/RETAIN	SERVICE/RETAIN

⊕ CONNECTION POINT OF NEW WORK



3 KEY PLAN
 NO SCALE

Order Plans @ www.LDILine.com