

METRO TRANSITION CENTER BATHROOM RENOVATIONS
 BUILDING A & C



GA DEPARTMENT OF CORRECTIONS
 300 PATROL DRIVE
 PO BOX 1529
 FORTSYTH, GA 31029



CERTIFICATIONS

CONSULTANT

DATE	NO.	BY

REVISIONS

DATE	NO.	DESCRIPTION
5/26/20	1	FOR CONSTRUCTION

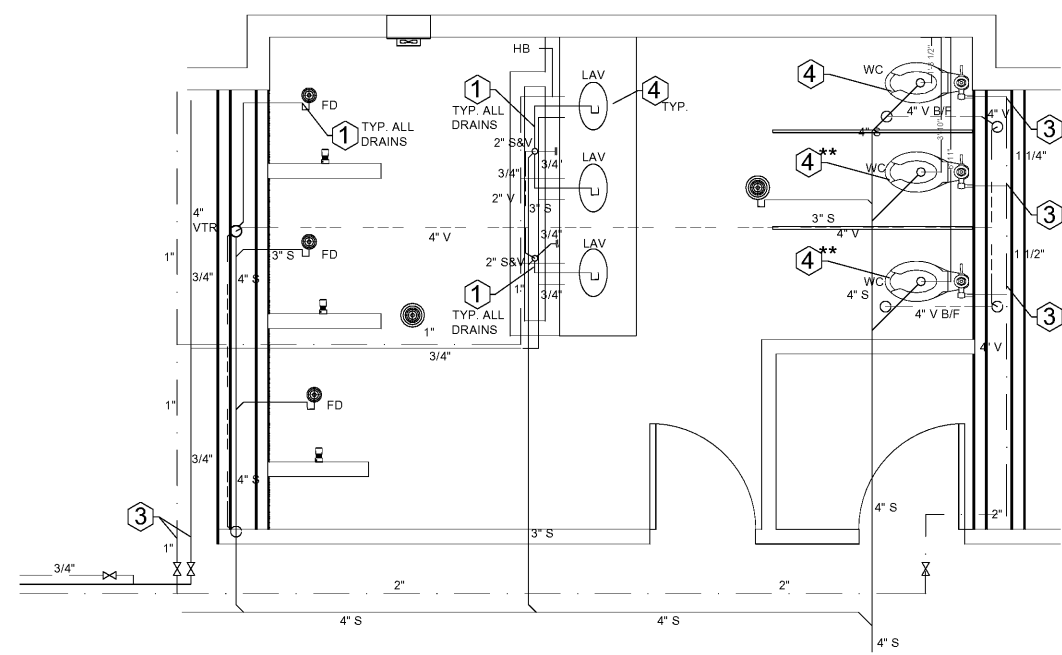
RELEASES

COPYRIGHT ©2019 RAYMOND ENGINEERING, INC.
 ALL RIGHTS RESERVED. THIS DRAWING AND ITS REPRODUCTIONS ARE THE PROPERTY OF RAYMOND ENGINEERING, INC. & MAY NOT BE REPRODUCED, PUBLISHED, OR USED IN ANY WAY WITHOUT THE PERMISSION OF RAYMOND ENGINEERING, INC. RETURN PRINTS TO RAYMOND ENGINEERING, INC. UPON COMPLETION OF USE FOR WHICH THEY WERE ISSUED.

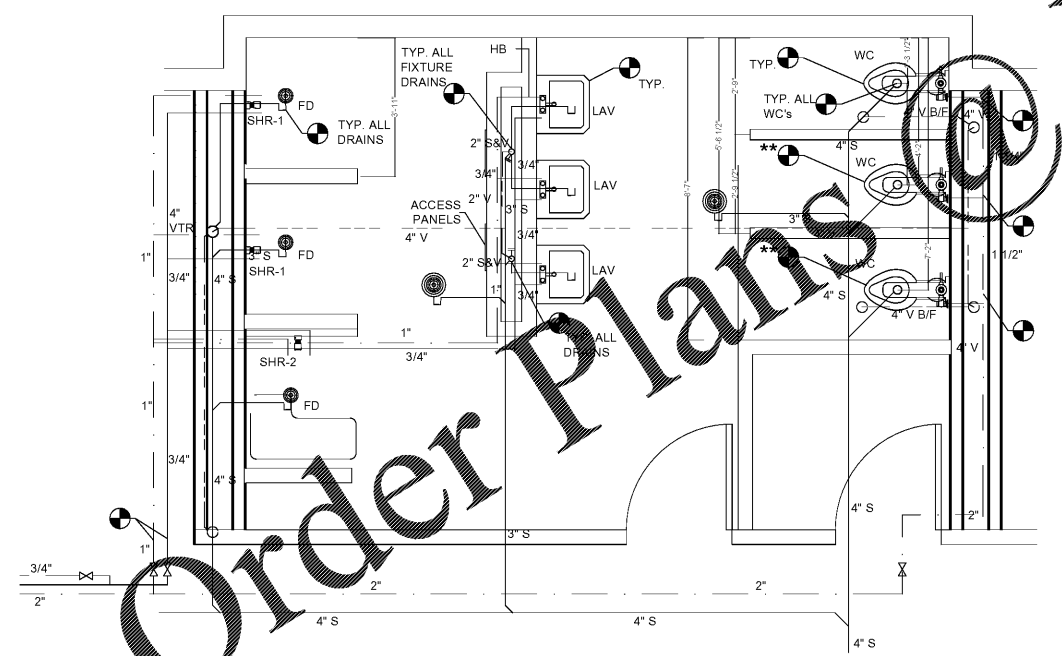
PROJECT NO.: 1080.022
 DESIGN BY: ---
 DRAWN BY: EB
 CHECKED BY: ---

BATHROOM 143 FLOOR PLAN - BUILDING A

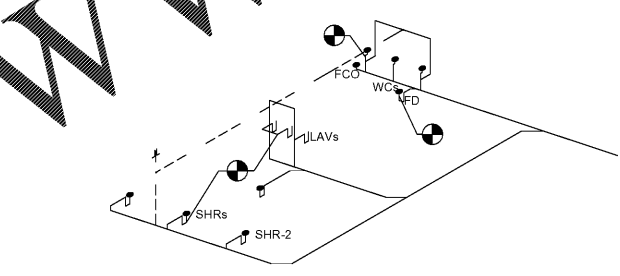
P101



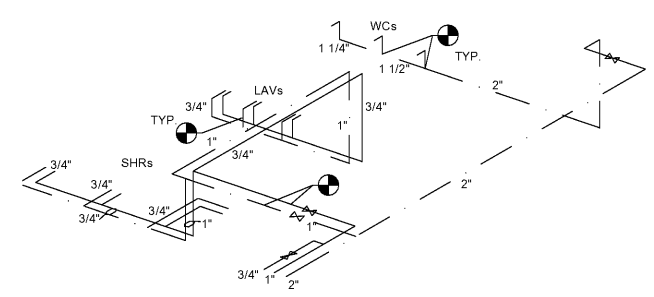
1 EXISTING BATHROOM 143 PLUMBING PLAN - BUILDING A
 SCALE: 1/2" = 1'-0"



2 NEW BATHROOM 143 PLUMBING PLAN - BUILDING A
 SCALE: 1/2" = 1'-0"



3 SEWER ISOMETRIC PLAN
 N.T.S.



4 DOMESTIC WATER ISOMETRIC PLAN
 N.T.S.

DEMOLITION NOTES

- 1 REMOVE ALL EXISTING SANITARY LINES UPSTREAM FROM THIS POINT. PREPARE FOR NEW CONNECTION (PLUMBING)
- 2 REMOVE ALL EXISTING SANITARY VENT LINES UPSTREAM FROM THIS POINT. PREPARE FOR NEW CONNECTION (PLUMBING)
- 3 REMOVE ALL EXISTING DOMESTIC WATER LINES DOWNSTREAM FROM THIS POINT. PREPARE FOR NEW CONNECTION (PLUMBING)
- 4 REMOVE ALL EXISTING PLUMBING FIXTURES. REPLACE WITH NEW. SEE SPECS FOR DETAILS. ** DENOTES RELOCATION OF FIXTURE/PIPING AS INDICATED (PLUMBING).
- 5 REMOVE ALL EXISTING DUCT AND REGISTER DOWNSTREAM FROM THIS POINT. PREPARE FOR NEW CONNECTION. ** REMOVE ALL DUCT (MECHANICAL).
- 6 REPLACE EXISTING R.F. WITH NEW ROOF MOUNTED UNIT. SEE SCHEDULE FOR DETAILS. (MECHANICAL).

GENERAL PLUMBING NOTES

- 1) INSTALL CLEANOUTS AT BOTTOM OF ALL DRAIN STACKS.
- 2) INSTALL HAMMER ARRESTORS AT ALL FIXTURE SUPPLY LINES (BOTH HOT & COLD).
- 3) LINE LOCATIONS AND SIZES ARE APPROXIMATED. CONTRACTOR MUST VERIFY ON SITE.
- 4) INSTALL SHUT-OFF VALVES AT ALL FIXTURES.
- 5) PIPE SIZE AND SLOPES

PIPE O.D. & PITCH	F.U.
2" (1/4" / LIN.FT.)	21 F.U.
3"ø (1/8" / LIN.FT.)	36 F.U.
3"ø (1/4" / LIN.FT.)	42 F.U.
4"ø (1/8" / LIN.FT.)	180 F.U.

● CONNECTION POINT OF NEW WORK

FIXTURE LEGEND

ITEM	DESCRIPTION	PIPE SIZE		MANUF./MODEL
		SUPPLY	DRAIN	
WC	TOILET	1"	4"	WILLOUGHBY BET-F 1490/FM/A-12-TS-128-FV-SLL WITH FLUSH 128 GPF VALVE
LAV	LAVATORY	1/2"	2"	WILLOUGHBY HS-1014-96-HC-W-ACC-RPT-SS LAV. WALL MOUNTED
FCT	FAUCET	1/2"	-	KOHLER TRITON BOWE K-40120-4K-L (OF 104E) ALL LAVATORIES
FD	FLOOR DRAIN	-	2"	ZURN (OR EQUIV. SELECTION BY CONTRACTOR)
SHR-1	SHOWER	1/2"	2"	WILLOUGHBY WBIS-FA-TPV-UBJ
SHR-2	SHOWER	1/2"	2"	WILLOUGHBY ADA WBIS-FA-TPV-UBJ

