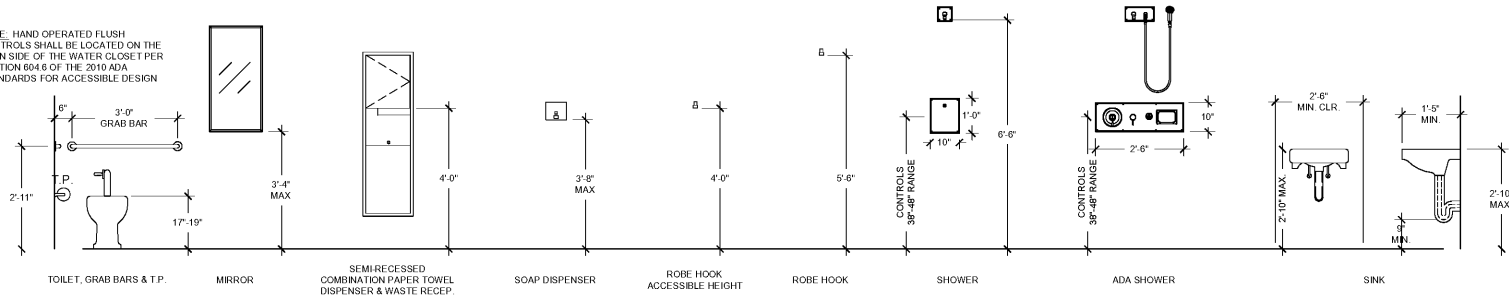
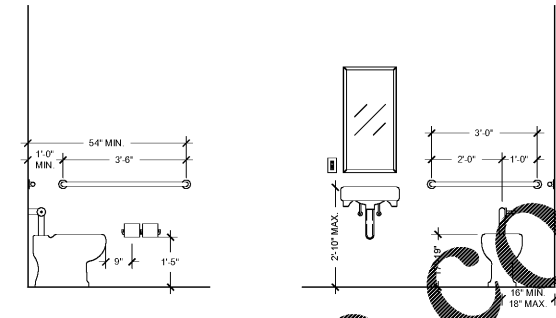


**GENERAL WASHROOM ACCESSORY
ACCESSIBLE MNTG. HT. INFORMATION:**
TO ENSURE FORWARD REACH ACCESS, ITEMS MUST BE
LOCATED NO MORE THAN 48" A.F.F. AND NO LESS THAN 19" A.F.F.

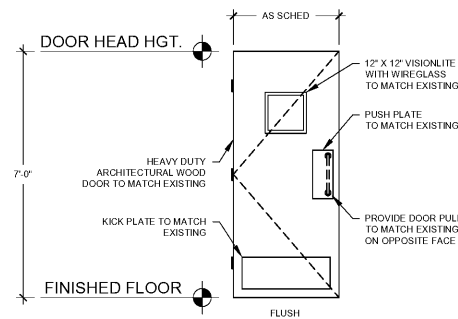
NOTE: HAND OPERATED FLUSH
CONTROLS SHALL BE LOCATED ON THE
OPEN SIDE OF THE WATER CLOSET PER
SECTION 054.6 OF THE 2010 ADA
STANDARDS FOR ACCESSIBLE DESIGN



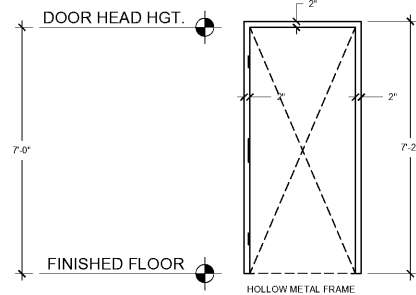
1 WASHROOM ACCESSORY MOUNTING HEIGHTS
SCALE: 1/2" = 1'-0"



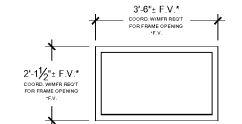
2 WASHROOM ACCESSORY MOUNTING HEIGHTS
SCALE: 1/2" = 1'-0"



1 DOOR TYPE ELEVATIONS

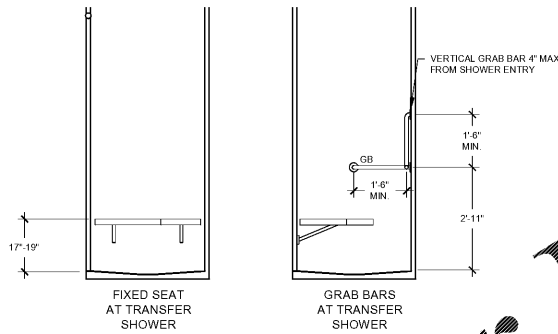


F1 DOOR FRAME ELEVATIONS

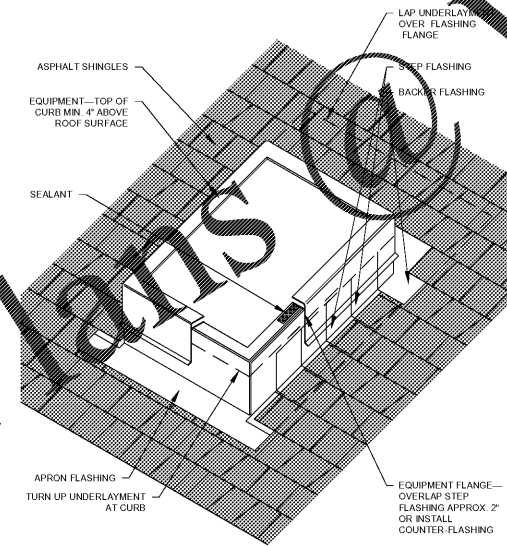


A WINDOW ELEVATION

3 DOOR AND WINDOW DETAILS
SCALE: 1/2" = 1'-0"



4 TRANSFER SHOWER CLEARANCES
SCALE: 1/2" = 1'-0"



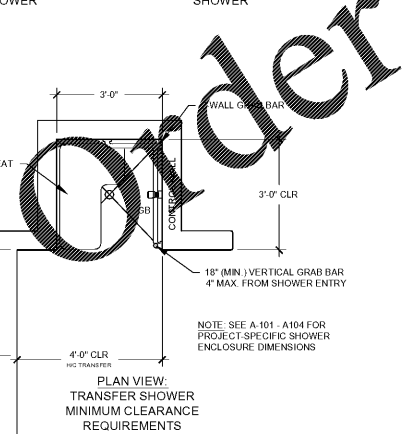
NOTES:
1. WHERE DEEMED NECESSARY, HOLD SHINGLES UP ONE COURSE DEPENDING ON ANTICIPATED DEBRIS AND/OR SNOW ACCUMULATION.
2. INSTALL CRICKET AT EQUIPMENT WIDER THAN 24 INCHES.

5 EQUIPMENT MOUNTING DETAIL
NOT TO SCALE

NOVE	ROOM NAME	FLOOR		BASE		WALLS		SHOWERS		CEILING		DOORS & FRAMES		REMARKS	
		MATL	COLOR	MATL	COLOR	MATL	COLOR	MATL	COLOR	MATL	COLOR	MATL	COLOR		
143	BLDG A TOILET/SHOWER	CONC.	P-4	CMU/CEMENT BD	P-4	CMU/CEMENT BD	P-2	CMU/CEMENT BD	P-3	CEMENT BD	P-1	8'-0"	H.M.	P-5	PAINTE NEW EXTERIOR SIDING & TRIM P-6 & TOUCH-UP REINSTALLED SIDING AS REQUIRED
150	BLDG A TOILET/SHOWER	CONC.	P-4	CMU/CEMENT BD	P-4	CMU/CEMENT BD	P-2	CMU/CEMENT BD	P-3	CEMENT BD	P-1	8'-0"	H.M.	P-5	PAINTE NEW EXTERIOR SIDING & TRIM P-6 & TOUCH-UP REINSTALLED SIDING AS REQUIRED
345	BLDG C TOILET/SHOWER	CONC.	P-4	CMU/CEMENT BD	P-4	CMU/CEMENT BD	P-2	CMU/CEMENT BD	P-3	GYP. BD	P-1	8'-10"	H.M.	P-5	
360	BLDG C TOILET/SHOWER	CONC.	P-4	CMU/CEMENT BD	P-4	CMU/CEMENT BD	P-2	CMU/CEMENT BD	P-3	GYP. BD	P-1	8'-10"	H.M.	P-5	

COLOR SCHEDULE		
PAINT / HIGH-PERFORMANCE COATINGS (COORD. FINAL COLOR SELECTION WITH OWNER)		MANUFACTURER
P-1 CEILING, EPOXY PAINT - WHITE		TNEMEC
P-2 WALL, EPOXY PAINT - AS SELECTED BY OWNER		TNEMEC
P-3 SHOWER WALL, HIGH PERFORMANCE COATINGS - AS SELECTED BY OWNER		TNEMEC
P-4 FLOOR WITH INTEGRAL COVE BASE, HIGH PERFORMANCE COATINGS - AS SELECTED BY OWNER		TNEMEC
P-5 HOLLOW METAL DOORS & FRAMES, EPOXY PAINT - AS SELECTED BY OWNER		TNEMEC
P-6 EXTERIOR SIDING & TRIM, EXTERIOR ACRYLIC - MATCH EXISTING		SHERWIN WILLIAMS

6 FINISH & COLOR SCHEDULE
NO SCALE



4 TRANSFER SHOWER CLEARANCES
SCALE: 1/2" = 1'-0"

METRO TRANSITION
CENTER BATHROOM
RENOVATIONS
BUILDING A & C



GA DEPARTMENT OF
CORRECTIONS
300 PATROL DRIVE
PO BOX 1529
FORSYTH, GA 31029



CERTIFICATIONS

CONSULTANT

DATE	NO	DESCRIPTION

REVISIONS

DATE	NO	DESCRIPTION
10/22/20	1	FOR CONSTRUCTION

RELEASES

COPYRIGHT ©2019
RAYMOND ENGINEERING GA, INC
ALL RIGHTS RESERVED. THIS DRAWING AND ITS
REPRODUCTIONS ARE THE PROPERTY OF
RAYMOND ENGINEERING GEORGIA, INC & MAY
NOT BE REPRODUCED, PUBLISHED, OR USED IN
ANY WAY WITHOUT THE PERMISSION OF
RAYMOND ENGINEERING GEORGIA, INC. RETURN
PRINTS TO RAYMOND ENGINEERING GEORGIA,
INC UPON COMPLETION OF USE FOR WHICH
THEY WERE ISSUED.

PROJECT NO.:	1080.022
DESIGN BY:	AL
DRAWN BY:	AL
CHECKED BY:	TAB

SCHEDULE AND DETAILS

A501