

**METRO TRANSITION  
 CENTER BATHROOM  
 RENOVATIONS**



GA DEPARTMENT OF  
 CORRECTIONS  
 300 PATROL DRIVE  
 PO BOX 1529  
 FORTSYTH, GA 31029



**CERTIFICATIONS**

**CONSULTANT**

DATE	NO.	DESCRIPTION

**REVISIONS**

DATE	NO.	DESCRIPTION
10/22/20	1	FOR CONSTRUCTION

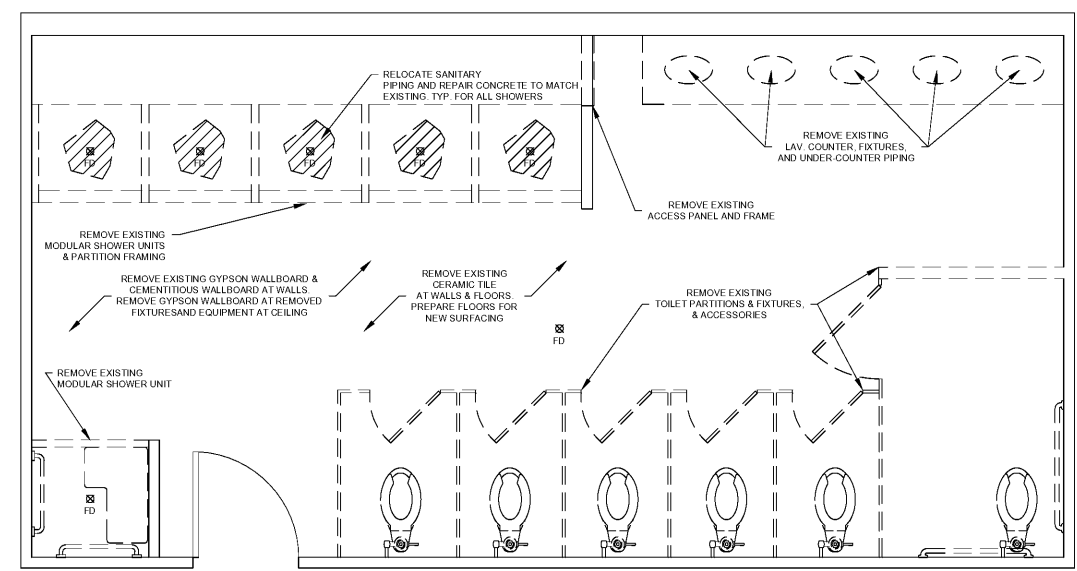
**RELEASES**

COPYRIGHT ©2019  
 RAYMOND ENGINEERING, INC.  
 ALL RIGHTS RESERVED. THIS DRAWING AND ITS  
 REPRODUCTIONS ARE THE PROPERTY OF  
 RAYMOND ENGINEERING, INC. & MAY  
 NOT BE REPRODUCED, PUBLISHED, OR USED IN  
 ANY WAY WITHOUT THE PERMISSION OF  
 RAYMOND ENGINEERING, INC. RETURN  
 PRINTS TO RAYMOND ENGINEERING, INC.  
 UPON COMPLETION OF USE FOR WHICH  
 THEY WERE ISSUED.

PROJECT NO.:	1080.022
DESIGN BY:	AL
DRAWN BY:	AL
CHECKED BY:	TAB

BATHROOM 360 PLANS -  
 BUILDING C

**A104**

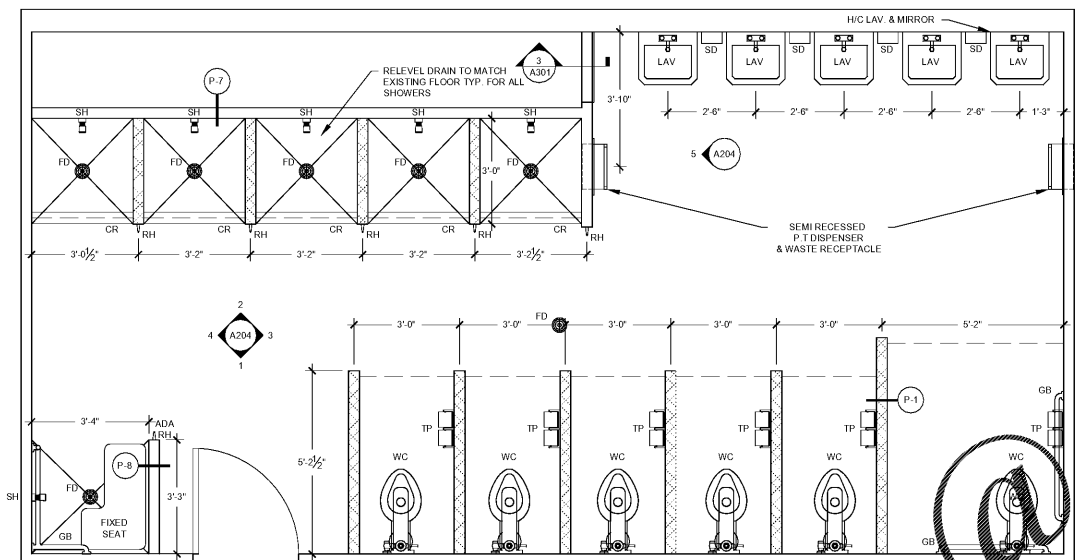


**1** EXISTING BATHROOM 360 FLOOR PLAN - BUILDING C  
 SCALE: 1/2" = 1'-0"

**DEMOLITION LEGEND**

DASHED LINES INDICATE PARTITIONS, FIXTURES, & ACCESSORIES TO BE REMOVED.

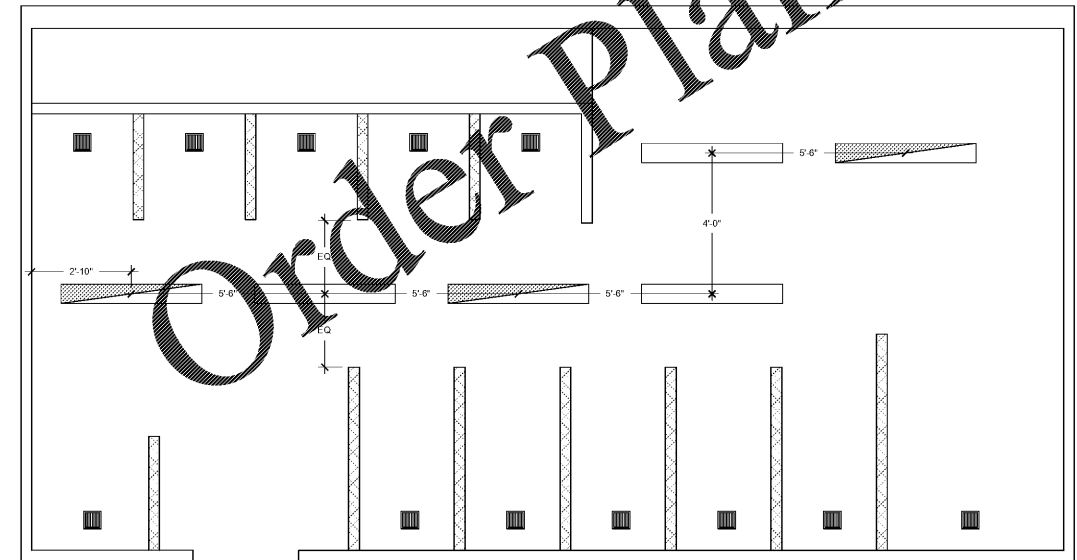
HATCH INDICATES AREA OF CONCRETE SLAB & SANITARY PIPING TO BE REMOVED & PREPARED TO RECEIVE NEW FIXTURES & FINISHES.



**2** NEW BATHROOM 360 FLOOR PLAN - BUILDING C  
 SCALE: 1/2" = 1'-0"

**ACCESSORY LEGEND**

TP TOILET PAPER  
 GB GRAB BAR  
 SD SOAP DISPENSER  
 RH ROBE HOOK  
 FD FLOOR DRAIN  
 SH SINK HEAD  
 AC ACCESSORY  
 CR COUNTER  
 LAV LAVATORY  
 WC WATER CLOSET



**3** NEW BATHROOM 360 CEILING PLAN - BUILDING C  
 SCALE: 1/2" = 1'-0"

**FIXTURE LEGEND**

CEILING MOUNTED LIGHT FIXTURE

EMERGENCY LIGHT FIXTURE

EXHAUST AIR GRILL

**DEMOLITION NOTES**

- REFER TO SPECIFICATION SECTION 01 11 00 SUMMARY OF WORK AND SECTION 02 41 13 SELECTIVE DEMOLITION.
- SECURE THE WORK AREA BY PROVIDING TEMPORARY FENCING AND INTERIOR SECURITY BARRIERS, AS REQUIRED BY THE OWNER.
- DISCONNECT FIXTURES AND EQUIPMENT FROM ACTIVE FACILITY SYSTEMS IN A MANNER THAT DOES NOT DISRUPT CONTINUING OPERATIONS IN OTHER AREAS. COORDINATE TEMPORARY DISRUPTIONS WITH THE OWNER.
- REMOVE EXISTING INTERIOR EQUIPMENT, FIXTURES, FINISHES, AND SUBSTRATES IDENTIFIED FOR REMOVAL, AND PROTECT EXISTING STRUCTURES OR OTHER ELEMENTS THAT ARE NOT TO BE REMOVED.
- CLEAN WORK AREAS, ADJACENT AREAS AND GROUNDS DAILY, & PROVIDE FOR WASTE REMOVAL, AS REQUIRED BY OWNER.
- ITEMS IDENTIFIED FOR REMOVAL INCLUDE, BUT ARE NOT LIMITED TO, THE FOLLOWING:
  - INTERIOR PARTITIONS, FIXTURES, AND EQUIPMENT
  - INTERIOR WALL AND FLOOR TILES
  - SELECTIVE INTERIOR WALL AND CEILING SURFACES
  - SELECTIVE CONCRETE REMOVAL AT SLABS AND SHOWER AREAS
  - SELECTIVE PLUMBING SUPPLY AND WASTE PIPING
- PREPARE SUBSTRATES AND INSTALL WOOD BLOCKING WITH TRIMMING PRECISE NEW FINISHES AND EQUIPMENT.

**RENOVATION NOTES**

- REFER TO SPECIFICATION SECTION 01 11 00 SUMMARY OF WORK.
- RECONNECT FIXTURES AND EQUIPMENT TO ACTIVE FACILITY SYSTEMS IN A MANNER THAT DOES NOT DISRUPT CONTINUING OPERATIONS IN OTHER AREAS. COORDINATE TEMPORARY DISRUPTIONS WITH THE OWNER.
- CLEAN WORK AREAS, ADJACENT AREAS AND GROUNDS DAILY, & PROVIDE FOR WASTE REMOVAL, AS REQUIRED BY OWNER.
- ITEMS IDENTIFIED FOR INSTALLATION INCLUDE, BUT ARE NOT LIMITED TO, THE FOLLOWING:
  - PLUMBING SUPPLY AND WASTE PIPING
  - MECHANICAL EXHAUST EQUIPMENT AND REGISTERS
  - ELECTRICAL WIRING AND ACCESSORIES
  - REPLACEMENT EQUIPMENT AT REMOVED LOCATIONS
  - FRAMED WALL AND CEILING BLOCKING, FASTENERS, SURFACES AND FINISHES
  - CMU PARTITIONS
  - ARCHITECTURAL, MECHANICAL, ELECTRICAL, AND PLUMBING FIXTURES, EQUIPMENT, AND ACCESSORIES

**4** KEY PLAN  
 NO SCALE  
 NOTE: PLANS ARE ROTATED 90 DEGREES.

Order Plans @

WWW.LDILine.com