

METRO TRANSITION CENTER BATHROOM RENOVATIONS
 BUILDING A & C



GA DEPARTMENT OF CORRECTIONS
 300 PATROL DRIVE
 PO BOX 1529
 FORTSYTH, GA 31029



CERTIFICATIONS

DATE	NO.	DESCRIPTION

CONSULTANT

DATE	NO.	DESCRIPTION

REVISIONS

DATE	NO.	DESCRIPTION
10/22/20	1	FOR CONSTRUCTION

RELEASES

COPYRIGHT ©2019 RAYMOND ENGINEERING GA, INC.
 ALL RIGHTS RESERVED. THIS DRAWING AND ITS REPRODUCTIONS ARE THE PROPERTY OF RAYMOND ENGINEERING GEORGIA, INC. & MAY NOT BE REPRODUCED, PUBLISHED, OR USED IN ANY WAY WITHOUT THE PERMISSION OF RAYMOND ENGINEERING GEORGIA, INC. RETURN PRINTS TO RAYMOND ENGINEERING GEORGIA, INC. UPON COMPLETION OF USE FOR WHICH THEY WERE ISSUED.

PROJECT NO.:	1080.022
DESIGN BY:	AL
DRAWN BY:	AL
CHECKED BY:	TAB

BATHROOM 150 PLANS - BUILDING A

A102

DEMOLITION NOTES

- REFER TO SPECIFICATION SECTION 01 11 00 SUMMARY OF WORK AND SECTION 02 41 13 SELECTIVE DEMOLITION.
- PROVIDE TEMPORARY DIRECT ACCESS TO EACH BUILDING A BATHROOM FROM THE EXTERIOR. RETAIN SIDING FOR REINSTALLATION.
- SECURE THE WORK AREA BY PROVIDING TEMPORARY FENCING AND INTERIOR SECURITY BARRIERS, AS REQUIRED BY THE OWNER.
- DISCONNECT FIXTURES AND EQUIPMENT FROM ACTIVE FACILITY SYSTEMS IN A MANNER THAT DOES NOT DISRUPT CONTINUING OPERATIONS IN OTHER AREAS. COORDINATE TEMPORARY DISRUPTIONS WITH THE OWNER.
- REMOVE EXISTING INTERIOR EQUIPMENT, FIXTURES, FINISHES, AND SUBSTRATES IDENTIFIED FOR REMOVAL AND PROTECT EXISTING STRUCTURES OR OTHER ELEMENTS THAT ARE NOT TO BE REMOVED.
- CLEAN WORK AREAS, ADJACENT AREAS AND GROUNDS DAILY, & PROVIDE FOR WASTE REMOVAL, AS REQUIRED BY OWNER.
- ITEMS IDENTIFIED FOR REMOVAL INCLUDE, BUT ARE NOT LIMITED TO, THE FOLLOWING:
 - EXTERIOR WALL AT TEMPORARY ACCESS AREA
 - EXTERIOR WINDOWS AND TRIM
 - INTERIOR PARTITIONS, FIXTURES, AND EQUIPMENT
 - INTERIOR WALL AND FLOOR TILES
 - INTERIOR HOLLOW METAL DOORS AND FRAMES
 - SELECTIVE INTERIOR WALL AND CEILING SURFACES AND FINISHES
 - SELECTIVE CONCRETE REMOVAL AT SLABS AND SHOWER BASES
 - SELECTIVE PLUMBING SUPPLY AND WASTE PIPING
 - SELECTIVE ROOF MATERIAL ASSOCIATED WITH EXISTING INSTALLATION
- PREPARE SUBSTRATES AND INSTALL WOOD BLOCKING WITH FRAMES TO RECEIVE NEW FINISHES AND EQUIPMENT.

RENOVATION NOTES

- REFER TO SPECIFICATION SECTION 01 11 00 SUMMARY OF WORK.
- RECONNECT FIXTURES AND EQUIPMENT TO ACTIVE FACILITY SYSTEMS IN A MANNER THAT DOES NOT DISRUPT CONTINUING OPERATIONS IN OTHER AREAS. COORDINATE TEMPORARY DISRUPTIONS WITH THE OWNER.
- CLEAN WORK AREAS, ADJACENT AREAS AND GROUNDS DAILY, & PROVIDE FOR WASTE REMOVAL, AS REQUIRED BY OWNER.
- ITEMS IDENTIFIED FOR INSTALLATION INCLUDE, BUT ARE NOT LIMITED TO, THE FOLLOWING:
 - PLUMBING SUPPLY AND WASTE PIPING
 - MECHANICAL EXHAUST EQUIPMENT AND REGISTERS
 - ELECTRICAL WIRING AND ACCESSORIES
 - REPLACEMENT EQUIPMENT AT REMOVED LOCATIONS
 - FRAMED WALL AND CEILING BLOCKING, FASTENERS, SURFACES AND FINISHES
 - CMU PARTITIONS
 - INTERIOR DOORS
 - ARCHITECTURAL, MECHANICAL, ELECTRICAL, AND PLUMBING FIXTURES, EQUIPMENT, AND ACCESSORIES
 - EXTERIOR INFILL WALL AT REMOVED AREAS TO MATCH EXISTING
 - EXTERIOR WINDOWS
 - EXTERIOR SIDING AND TRIM TO MATCH EXISTING
 - ROOF REPAIR AT EXHAUST FAN LOCATIONS

DEMOLITION LEGEND

DASHED LINES INDICATE PARTITIONS, FIXTURES, & ACCESSORIES TO BE REMOVED.

HATCH INDICATES AREA OF CONCRETE SLAB & SANITARY PIPING TO BE REMOVED & PREPARED TO RECEIVE NEW FIXTURES & FINISHES.

ACCESSORY LEGEND

TP TOILET PAPER
 GB GRAB BAR
 SD SOAP DISPENSER
 RH ROBE HOOK
 FD FLOOR DRAIN
 SH SHOWER HEAD
 AP ACCESS PANEL
 CR CURTAIN & ROD
 LAV LAVATORY
 WC WATER CLOSET

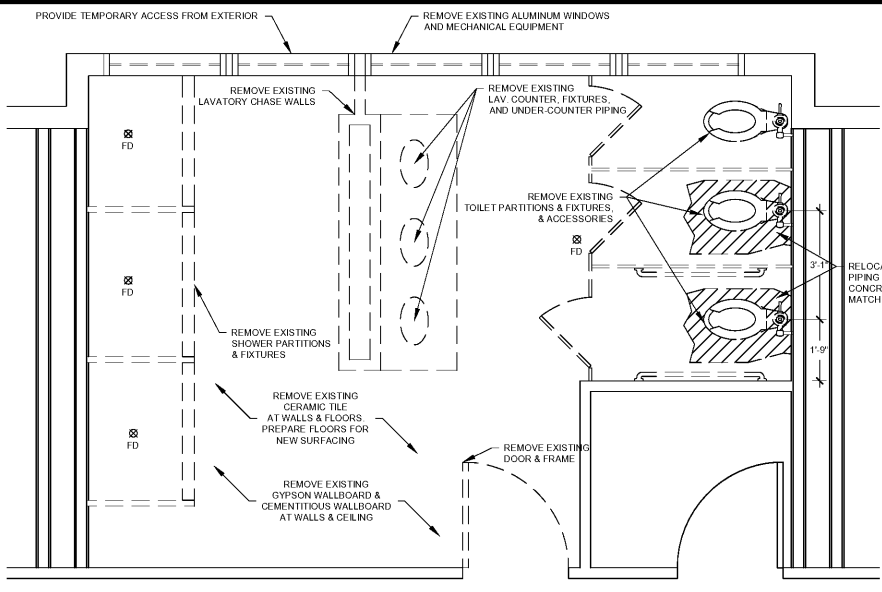
FIXTURE LEGEND

CEILING MOUNTED LIGHT FIXTURE

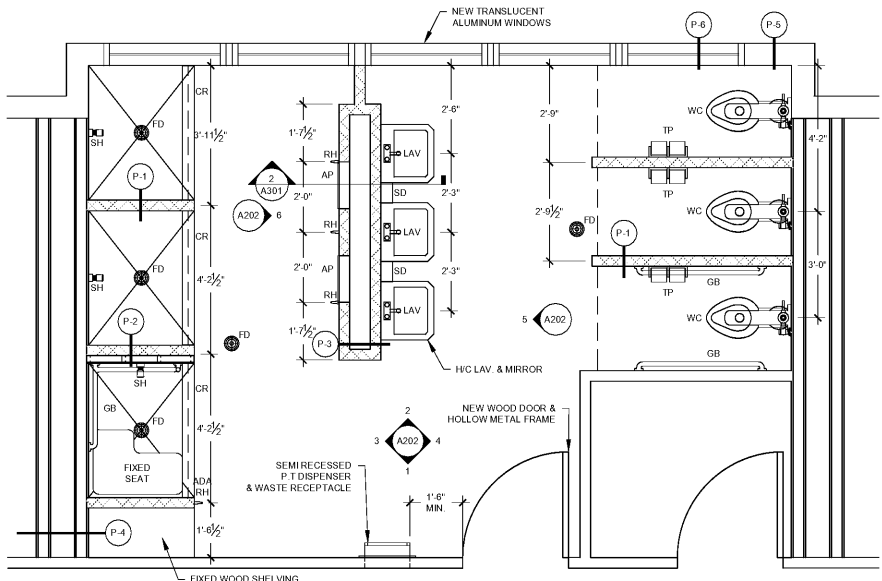
EMERGENCY LIGHT FIXTURE

EXHAUST AIR GRILL

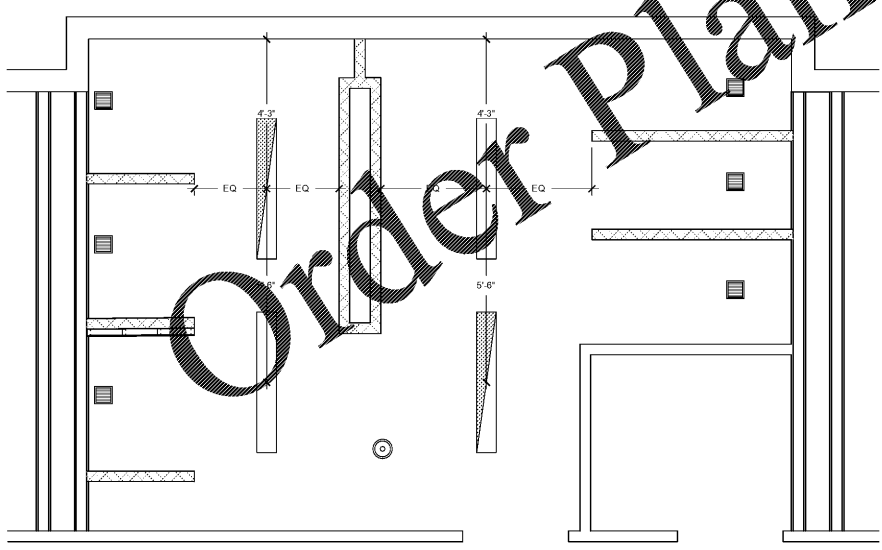
PA ANNOUNCER



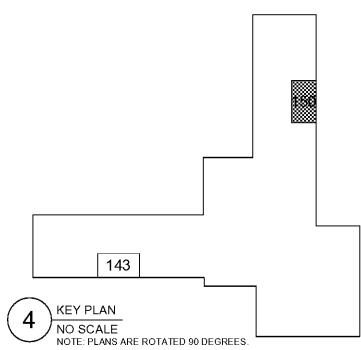
1 EXISTING BATHROOM 150 FLOOR PLAN - BUILDING A
 SCALE: 1/2" = 1'-0"



2 NEW BATHROOM 150 FLOOR PLAN - BUILDING A
 SCALE: 1/2" = 1'-0"



3 NEW BATHROOM 150 CEILING PLAN - BUILDING A
 SCALE: 1/2" = 1'-0"



4 KEY PLAN
 NO SCALE
 NOTE: PLANS ARE ROTATED 90 DEGREES.

Order Plans @ www.LDILine.com