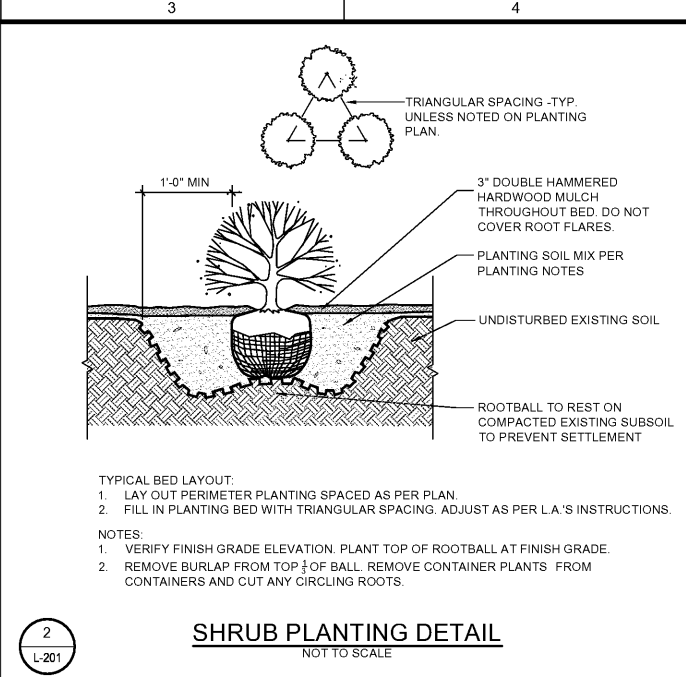


- NOTES:
1. MIN. ROOT MASS TO BE IN ACCORDANCE WITH "AMERICAN STANDARDS FOR NURSERY STOCK"
  2. PRUNE ALL DAMAGED, DISEASED OR WEAK LIMBS & ROOTS.
  3. DO NOT ALLOW ROOT BALL TO DRY OUT DURING INSTALLATION PROCESS.
  4. ALL GUYS, STAKES AND ASSOCIATED MATERIALS SHALL BE REMOVED BY CONTRACTOR WITHIN ONE WEEK OF THE END OF THE 90 DAY MAINTENANCE PERIOD.

**TYP. TREE PLANTING DETAIL**  
NO SCALE

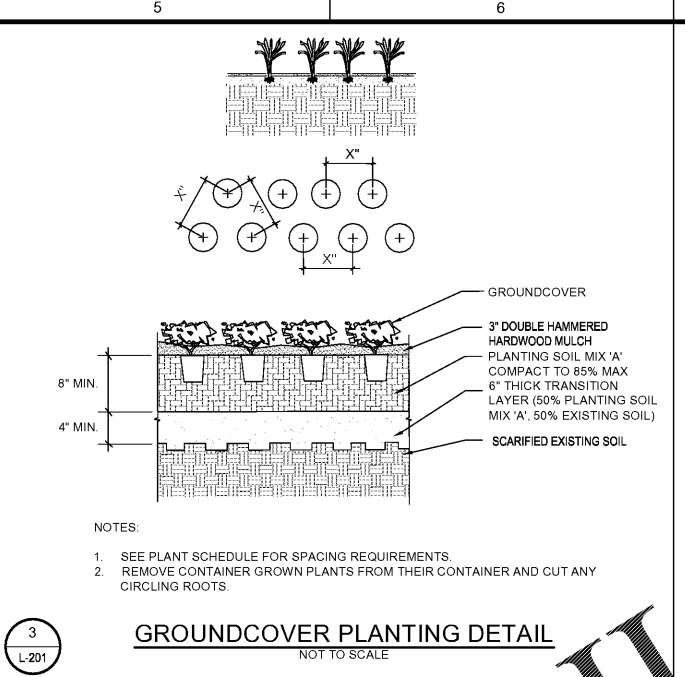
1  
L-201



- TYPICAL BED LAYOUT:
1. LAY OUT PERIMETER PLANTING SPACED AS PER PLAN.
  2. FILL IN PLANTING BED WITH TRIANGULAR SPACING. ADJUST AS PER L.A.'S INSTRUCTIONS.
- NOTES:
1. VERIFY FINISH GRADE ELEVATION. PLANT TOP OF ROOTBALL AT FINISH GRADE.
  2. REMOVE BURLAP FROM TOP 1/3 OF BALL. REMOVE CONTAINER PLANTS FROM CONTAINERS AND CUT ANY CIRCLING ROOTS.

**SHRUB PLANTING DETAIL**  
NOT TO SCALE

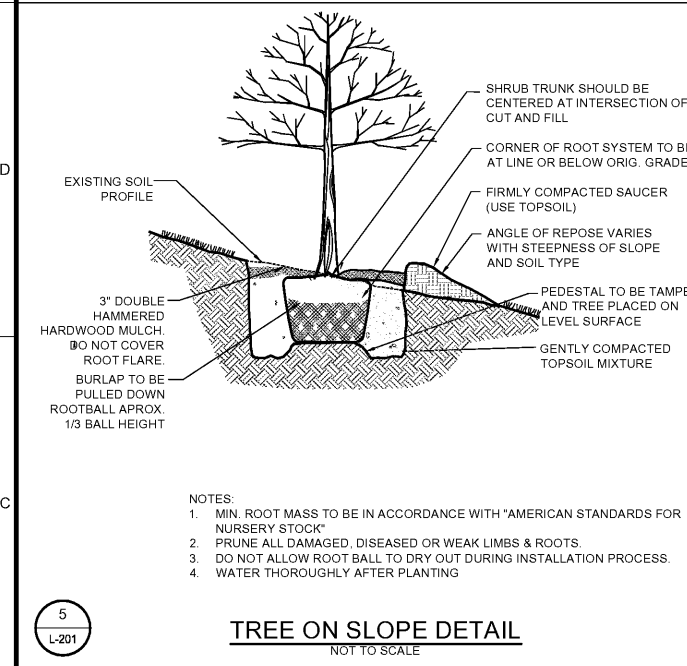
2  
L-201



- NOTES:
1. SEE PLANT SCHEDULE FOR SPACING REQUIREMENTS.
  2. REMOVE CONTAINER GROWN PLANTS FROM THEIR CONTAINER AND CUT ANY CIRCLING ROOTS.

**GROUND COVER PLANTING DETAIL**  
NOT TO SCALE

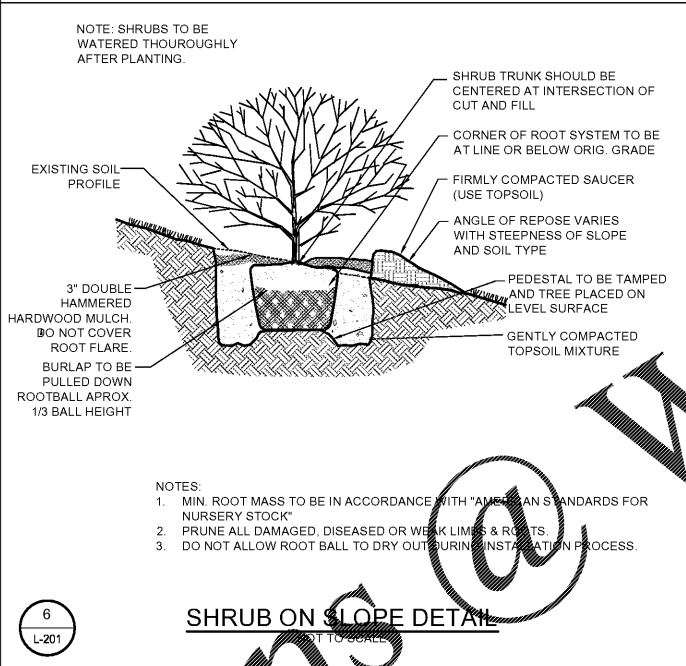
3  
L-201



- NOTES:
1. MIN. ROOT MASS TO BE IN ACCORDANCE WITH "AMERICAN STANDARDS FOR NURSERY STOCK"
  2. PRUNE ALL DAMAGED, DISEASED OR WEAK LIMBS & ROOTS.
  3. DO NOT ALLOW ROOT BALL TO DRY OUT DURING INSTALLATION PROCESS.
  4. WATER THOROUGHLY AFTER PLANTING.

**TREE ON SLOPE DETAIL**  
NOT TO SCALE

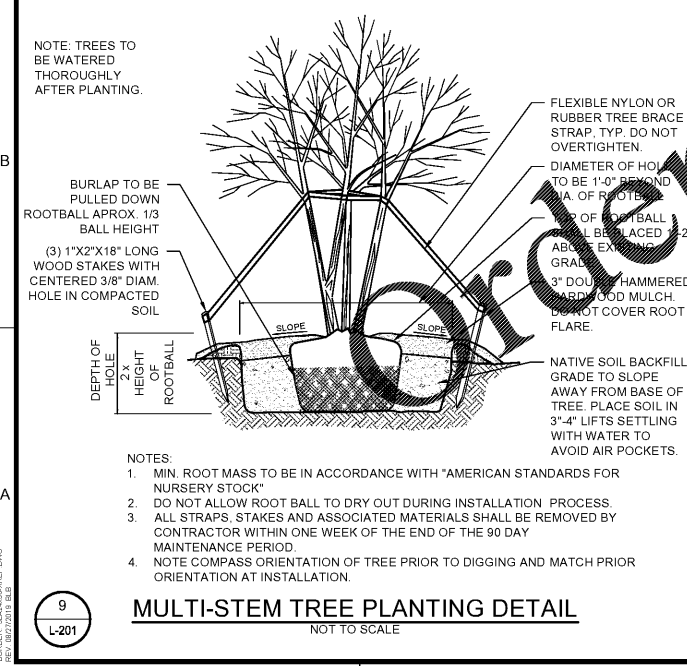
5  
L-201



- NOTES:
1. MIN. ROOT MASS TO BE IN ACCORDANCE WITH "AMERICAN STANDARDS FOR NURSERY STOCK"
  2. PRUNE ALL DAMAGED, DISEASED OR WEAK LIMBS & ROOTS.
  3. DO NOT ALLOW ROOT BALL TO DRY OUT DURING INSTALLATION PROCESS.

**SHRUB ON SLOPE DETAIL**  
NOT TO SCALE

6  
L-201



- NOTES:
1. MIN. ROOT MASS TO BE IN ACCORDANCE WITH "AMERICAN STANDARDS FOR NURSERY STOCK"
  2. DO NOT ALLOW ROOT BALL TO DRY OUT DURING INSTALLATION PROCESS. ALL STRAPS, STAKES AND ASSOCIATED MATERIALS SHALL BE REMOVED BY CONTRACTOR WITHIN ONE WEEK OF THE END OF THE 90 DAY MAINTENANCE PERIOD.
  3. NOTE COMPASS ORIENTATION OF TREE PRIOR TO DIGGING AND MATCH PRIOR ORIENTATION AT INSTALLATION.
  4. LOCATE ANCHOR STAKE 1'-0" OUTSIDE OF PLANTING HOLE ON THE SIDE OF THE PREVAILING WIND.

**MULTI-STEM TREE PLANTING DETAIL**  
NOT TO SCALE

9  
L-201



- NOTES:
1. MIN. ROOT MASS TO BE IN ACCORDANCE WITH "AMERICAN STANDARDS FOR NURSERY STOCK"
  2. DO NOT ALLOW ROOT BALL TO DRY OUT DURING INSTALLATION PROCESS. ALL STRAPS, STAKES AND ASSOCIATED MATERIALS SHALL BE REMOVED BY CONTRACTOR WITHIN ONE WEEK OF THE END OF THE 90 DAY MAINTENANCE PERIOD.
  3. NOTE COMPASS ORIENTATION OF TREE PRIOR TO DIGGING AND MATCH PRIOR ORIENTATION AT INSTALLATION.
  4. LOCATE ANCHOR STAKE 1'-0" OUTSIDE OF PLANTING HOLE ON THE SIDE OF THE PREVAILING WIND.

**EVERGREEN TREE PLANTING DETAIL**  
NOT TO SCALE

10  
L-201

**PLANTING NOTES:**

1. THE LANDSCAPE CONTRACTOR SHALL LOCATE AND VERIFY THE EXISTENCE OF ALL UTILITIES PRIOR TO STARTING WORK.
2. THE LANDSCAPE CONTRACTOR SHALL SUPPLY ALL PLANT MATERIAL IN QUANTITIES SUFFICIENT TO COMPLETE THE PLANTING SHOWN ON ALL DRAWINGS.
3. ALL MATERIAL SHALL CONFORM TO THE GUIDELINES ESTABLISHED BY THE CURRENT AMERICAN STANDARDS FOR NURSERY STOCK, PUBLISHED BY THE AMERICAN ASSOCIATION OF NURSERYMEN.
4. NO PLANT SHALL BE PUT INTO THE GROUND BEFORE ROUGH GRADING IS COMPLETE AND APPROVED BY THE PROJECT LANDSCAPE ARCHITECT OR EQUAL.
5. ALL PLANTS SHALL BEAR THE RELATIONSHIP TO FINISHED GRADE AS THE PLANT'S ORIGINAL GRADE BEFORE DIGGING.
6. ALL PLANTS SHALL BE TRIMMED AND PRUNED FOR GROWTH AS SPECIFIED. NO CONTAINER GROWN STOCK WILL BE ACCEPTED WITH A ROOT BOUND. ALL ROOT WRAPPING MATERIAL MADE OF SYNTHETIC OR PLASTICS SHALL BE REMOVED AT THE TIME OF PLANTING.
7. PRIOR TO PLANTING THE LOCATION OF TREES SHALL BE STAKED AND ALL PLANT MATERIAL SHALL BE INSPECTED FOR APPROVAL BY THE PROJECT LANDSCAPE ARCHITECT OR EQUAL. NO PLANT MATERIAL SHALL BE ACCEPTED IF IT IS DAMAGED, DISEASED OR INADEQUATE IN SIZE AS SPECIFIED ON PLANS. SUBSTITUTIONS DUE TO AVAILABILITY MUST BE APPROVED BY THE LANDSCAPE ARCHITECT.
8. "THINNING" PLANTS SHALL BE THINNED BY REMOVING A BALANCED ONE THIRD OF THE VEGETATION. PRUNE FOR OPTIMUM APPEARANCE AND DESIGN INTENT BY ELIMINATING TALL SHREDS, DEAD WOOD AND SUCKERS.
9. ALL PLANTS SHALL BE INSTALLED AS PER DETAILS AND THE INSTALLATION SPECIFICATIONS.
10. THE LANDSCAPE CONTRACTOR SHALL PROVIDE FERTILIZER, PRE-EMERGENT HERBICIDE, LIME, TOPSOIL AND PLANTING MIXTURE AS PER THE INSTALLATION SPECIFICATIONS.
11. BEDLINES SHALL HAVE A 3" DEEP SHOVEL CUT TRENCH EDGE WHERE MULCH MEETS GRASS, CONCRETE WALKS OR CURBS UNLESS OTHERWISE SPECIFIED. BEDLINES SHALL BE SMOOTH AND CONTINUOUS AND BE WITHIN A REASONABLE LOCATION AND SHAPE AS ILLUSTRATED ON PLANS.
12. BERM PLANTING AREAS W/ 4" TOP SOIL. USE TOPSOIL STOCKPILED DURING GRADING OPERATIONS IF SUITABLE. ALL PLANTING AREAS SHOULD HAVE POSITIVE DRAINAGE AND NOT ENCOURAGE SATURATED ROOT SYSTEMS.
13. PLACE A MINIMUM 3" OF MULCH OVER ALL PLANTING BEDS; TUCK MULCH UNDER PLANTS AND INTO BEDLINE TRENCHES PER PLAN SPECIFICATIONS.
14. LANDSCAPE CONTRACTOR IS RESPONSIBLE FOR CLEAN UP OF ALL CONTAINERS, PALLETS, DEBRIS, ETC. RESULTING FROM HIS/HER WORK.

7  
L-201

**IRRIGATION SPECIFICATIONS:**

1. CONTRACTOR SHALL DESIGN AND INSTALL AN IRRIGATION SYSTEM FOR 100% COVERAGE OF ALL NEW TREES, SHRUBS AND GRASS WITHIN THE IRRIGATION LIMITS. A SHOP DRAWING OF THE PROPOSED SYSTEM LAYOUT AND PROPOSED EQUIPMENT SCHEDULE MUST BE SUBMITTED TO OWNER FOR APPROVAL PRIOR TO CONSTRUCTION.
2. ALL IRRIGATION EQUIPMENT SHALL BE MANUFACTURED BY RAINBIRD INC. OR APPROVED EQUAL.
3. CONTRACTOR SHALL FIELD VERIFY EXISTING WATER PRESSURE AND AVAILABLE VOLUME FOR MINIMUM MANUFACTURED SPECIFIED WORKING PRESSURE BEFORE WORKING IRRIGATION SYSTEM.
4. CONTRACTOR SHALL SUPPLY POWER TO CONTROLLER UTILIZING NEAREST EXISTING POWER SUPPLY. CONTRACTOR SHALL CONSULT WITH OWNER AS TO THE LOCATION AND PLACEMENT OF THE CONTROLLER.
5. CONTRACTOR WILL INSTALL HEADS AND NOZZLES THAT WILL LIMIT THE AMOUNT OF WATER THROWN ON IMPERVIOUS SURFACES AND STILL MAINTAIN 100% COVERAGE OF PLANTED AREAS WITHIN THE IRRIGATION LIMITS. WATER OVERSPRAY ONTO IMPERVIOUS SURFACES MUST BE MINIMIZED TO THE GREATEST EXTENT POSSIBLE. IRRIGATION WATER MUST BE DIRECTED AWAY FROM BUILDINGS & OTHER STRUCTURES.
6. CONTRACTOR SHALL LOCATE ALL UTILITIES BEFORE IRRIGATION INSTALLATION BEGINS.
7. NO IRRIGATION WATER SHALL BE THROWN ON BUILDING MASONRY. NO FUNNY PIPE OR OTHER FLEXIBLE PIPE CAN BE USED FOR SUPPLY OR FEEDER LINES. NO STATIONARY RISERS CAN BE USED.
8. ALL PLASTIC PIPE FROM SIZES 4" AND ABOVE SHALL BE CLASS 200, SDR 21, UNPLASTICIZED RIGID PVC PIPE WITH INTEGRAL BELL AND RUBBER RING GASKET UNLESS OTHERWISE SPECIFIED. PIPE FROM SIZES 3" TO 3/4" SHALL BE CLASS 200, SOLVENT WELD, PVC PIPE. 1/2" PIPE SHALL BE CLASS 200, SOLVENT WELD, PVC PIPE. ALL PIPE SHALL BE SUPPLIED IN 20' STANDARD LENGTHS AND SHALL BE MANUFACTURED BY CERTAINTED CORP., CRESTLINE, DURIA, OR EQUAL. ALL PIPE THAT IS EXPOSED OR NOT BELOW GRADE SHALL BE SCHEDULE 80 PVC.
9. ALL IN-GROUND WIRE CONNECTIONS MUST BE MADE WITH 3M-DBY WIRE CONNECTIONS OR APPROVED EQUAL.
10. CONTROLLER SHALL BE BY RAIN BIRD OR APPROVED EQUAL. CONTROLLER SHALL INCLUDE RAIN SENSOR. CONTROLLER SHALL BE WEATHER TIGHT CONSTRUCTION.
11. ALL CONTROL VALVES MUST BE BRASS OR SCHED. 80 PVC WITH A SCHED. 80 ISOLATION VALVE AT EACH CONTROL VALVE.
12. VALVES IN BOXES MUST BE EASILY ACCESSIBLE AND INSTALLED WITH 8" DRAINAGE ROCK IN BOTTOM.
13. ALL VALVE BOXES SHALL BE SET 1" ABOVE FINISHED GRADE.

11  
L-201

**LANDSCAPE REQUIREMENTS:**

10.3.4 - EXISTING VEGETATION  
PER THE NORTH AUGUSTA DEVELOPMENT CODE, 'EXISTING HEALTHY VEGETATION MAY BE COUNTED TOWARD THE REQUIRED LANDSCAPING IF IT IS USED AS A YEAR-ROUND SIGHT OBSTRUCTION BUFFER. PLAN MUST INDICATE THE TYPE, NUMBER AND SIZE OF EXISTING PLANTS THAT ARE SUFFICIENT TO COMPLY WITH THE RESPECTIVE BUFFER.'  
"VEGETATION TO BE PROTECTED FOR BUFFER REQUIREMENTS ARE TO BE DISCUSSED WITH THE PLANNING DIRECTOR ON SITE AFTER CLEANUP OF UNDERBRUSH WITHIN THE LIMITS OF DISTURBANCE HAS OCCURRED."

10.5 - LANDSCAPE BUFFER REQUIREMENTS  
NW PROPERTY LINE - BUFFER TYPE B REQUIRED: 396 LF X 0.7 = 258.3 BUFFER POINTS REQUIRED  
-ALL EXISTING VEGETATION WITHIN BUFFER TO BE PROTECTED.  
-BUFFER CALCULATIONS TO BE REVISITED AFTER LIMITS OF DISTURBANCE CLEARING HAS BEEN COMPLETED. SEE NOTE ABOVE IN SECTION 10.3.4.

SW PROPERTY LINE - BUFFER TYPE B REQUIRED: 193 LF X 0.7 = 135.1 BUFFER POINTS REQUIRED  
-ALL EXISTING VEGETATION WITHIN BUFFER TO BE PROTECTED.  
-BUFFER CALCULATIONS TO BE REVISITED AFTER LIMITS OF DISTURBANCE CLEARING HAS BEEN COMPLETED. SEE NOTE ABOVE IN SECTION 10.3.4.

SE PROPERTY LINE - BUFFER TYPE B REQUIRED: 200 LF X 0.7 = 140 BUFFER POINTS REQUIRED  
-ALL EXISTING VEGETATION WITHIN BUFFER TO BE PROTECTED.  
-BUFFER CALCULATIONS TO BE REVISITED AFTER LIMITS OF DISTURBANCE CLEARING HAS BEEN COMPLETED. SEE NOTE ABOVE IN SECTION 10.3.4.

10.6 - PARKING LOT CALCULATIONS  
ADJACENT TO STREET: 90 LF TOTAL  
3 LARGE TREES REQUIRED (3 PROVIDED)  
3 SMALL TREES REQUIRED (3 PROVIDED)  
19 SHRUBS REQUIRED (19 PROVIDED)

ADJACENT TO INTERNAL ACCESS DRIVES: 494 LF TOTAL  
NO LARGE TREES REQUIRED  
14 SMALL TREES REQUIRED (14 PROVIDED)  
19 SHRUBS REQUIRED (19 PROVIDED)

ADJACENT TO INTERNAL DRIVE ISLAND DUE TO VISUAL CONSTRAINTS AND LONG TERM MAINTENANCE REQUIREMENTS  
\*RETAINING WALL ALONG NORTHERN INTERNAL DRIVE TO ACT AS ADDITIONAL VISUAL BUFFER

ADJACENT TO SIDE AND REAR PROPERTY LINES: 130 LF TOTAL  
NO LARGE TREES REQUIRED  
5 SMALL TREES REQUIRED (5 PROVIDED)  
27 SHRUBS REQUIRED (27 PROVIDED)

10.7 - STREET TREES  
W. MARTINTOWN ROAD - CLASS 3 LAND USE: 298 LF FRONTAGE  
8 LARGE TREES X 40 LF = 320 LF  
TOTAL FRONTAGE COVERED = 320 LF  
\*TREES SHOWN OUTSIDE OF THE STREET YARD DUE TO POWER EASEMENT  
1- EXISTING ON NORTHWEST PROPERTY CORNER  
4- PROPOSED ALONG W. MARTINTOWN RD.  
3- PROPOSED IN BIORETENTION AREA DUE TO UTILITY CONSTRAINTS

OBSERVATORY AVENUE - CLASS 3 LAND USE: 150 LF FRONTAGE  
4 LARGE TREES X 40 LF = 160 LF  
TOTAL FRONTAGE COVERED = 160 LF


CLAY STREET - CLASS 3 LAND USE: 158 LF FRONTAGE  
EXISTING VEGETATION MEETS REQUIREMENTS OF THIS SECTION

10.10.2.3 - CANOPY CALCULATIONS  
10% OF NET LOT AREA MUST HAVE TREE CANOPY COVER  
400 SF/LARGE TREE PLANTED  
200 SF/SMALL TREE PLANTED  
PROJECT SITE NET LOT AREA = 67,850 X .10 = 6,785 SF REQUIRED CANOPY COVERAGE  
26 LARGE TREES PROVIDED = 10,400 SF  
3 SMALL TREES PROVIDED = 600 SF  
TOTAL = 11,000 SF

10.10.2.4 - BUILDING FOUNDATION PLANTING CALCULATIONS  
APPLICABLE BUILDING PERIMETER LF = 145 LF  
145/5 = 29 SHRUBS REQUIRED  
34 SHRUBS PROVIDED  
\*SHRUBS NOT PROVIDED ON THE REAR PORTION OF THE BUILDING DUE TO MECHANICAL EQUIPMENT

OVERALL LARGE TREES REQUIRED: 15 TREES (20 PROVIDED)  
OVERALL SMALL TREES REQUIRED: 22 TREES (22 PROVIDED)  
OVERALL SHRUBS REQUIRED: 175 SHRUBS (204 PROVIDED)

SOME TREES RELOCATED TO OTHER AREAS ON PROPERTY DUE TO SITE CONSTRAINTS. OVERALL NUMBER OF TREES REQUIRED STILL MEETS NUMBER OF TREES PROVIDED.



Since 1980  
Architects • Engineers • Landscape Architects

**JOHNSON, LASCHNER & ASSOCIATES, P.C.**

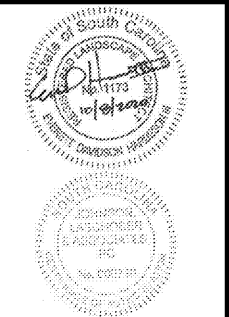
AUGUSTA, GA • MT. PLEASANT, SC  
TEL. (706) 724-5756 • TEL. (843) 619-4656  
FAX (706) 724-3955  
WWW.THEJLAGROUP.COM

---

CITY OF NORTH AUGUSTA, SC  
100 GEORGIA AVENUE, NORTH AUGUSTA, SC 29841

PROJECT NAME:  
**NORTH AUGUSTA  
FIRE STATION 1 RELOCATION**

PROJECT LOCATION:  
311 W. MARTINTOWN ROAD, NORTH AUGUSTA, SC 29841




REV.	DATE	ISSUED FOR	DESCRIPTION
0	10/08/20	W/TB	ISSUED FOR BID

---

PROJECT NO. 3057.2003  
DRAWN BY: JNR  
CHECKED BY: EDH  
DATE: 10/08/2020

SHEET TITLE:  
**LANDSCAPE NOTES AND DETAILS**

SCALE: AS NOTED  
DRAWING NO. **L-201** REV. 0



Stewart-Cooper-Nowell  
Architects

704.863.6311  
www.scn-architects.com