



Since 1980

Architects • Engineers • Landscape Architects

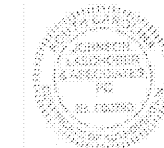
JOHNSON, LASCHNER & ASSOCIATES, P.C.

AUGUSTA, GA • MT. PLEASANT, SC
TEL (706) 724-5756 • TEL (843) 619-4656
FAX (706) 724-3955
WWW.THEJLAGROUP.COM

CITY OF NORTH AUGUSTA, SC
100 GEORGIA AVENUE, NORTH AUGUSTA, SC 29841

**NORTH AUGUSTA
FIRE STATION 1 RELOCATION**

PROJECT LOCATION:
311 W. MARTINTOWN ROAD, NORTH AUGUSTA, SC 29841



REV	DATE	BY	DESCRIPTION
0	10/08/20	WTB	ISSUED FOR BID

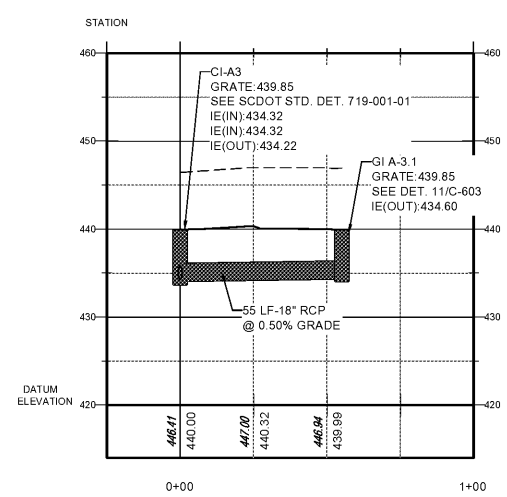
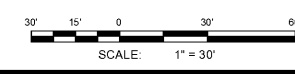
PROJECT NO. 3057.2003
 DRAWN BY: JNR
 CHECKED BY: WTB
 DATE: 10/08/2020

SHEET TITLE:
**MISCELLANEOUS
 PROFILES**

SCALE: 1" = 30'
 DRAWING NO. **C-202**
 REV. 0

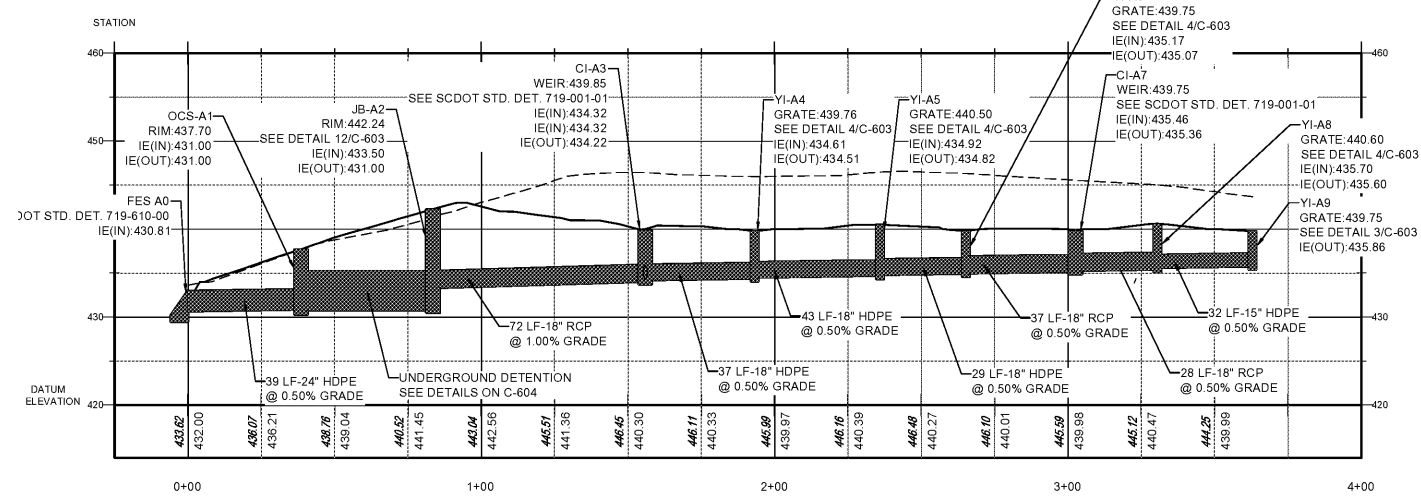


Stewart - Cooper - Newell
 Architects
 704.865.6311
 www.scn-architects.com



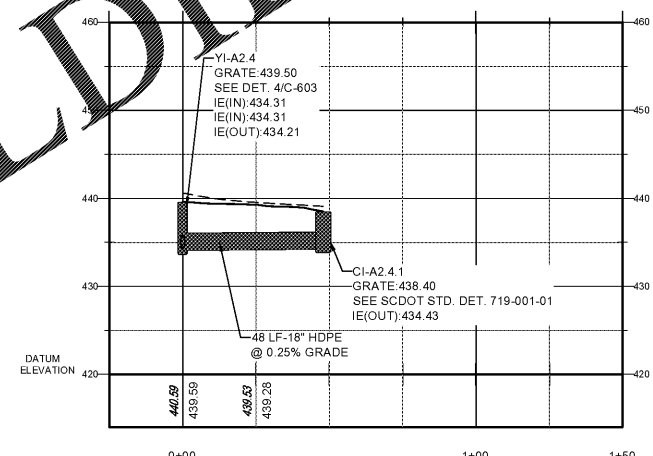
C/L STORM SEWER A3 TO A3.1 PROFILE

SCALE: HOR: 1" = 30'
VER: 1" = 10'



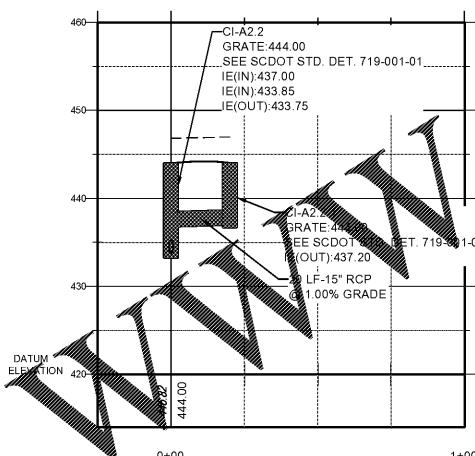
C/L STORM SEWER A0 TO A9 PROFILE

SCALE: HOR: 1" = 30'
VER: 1" = 10'



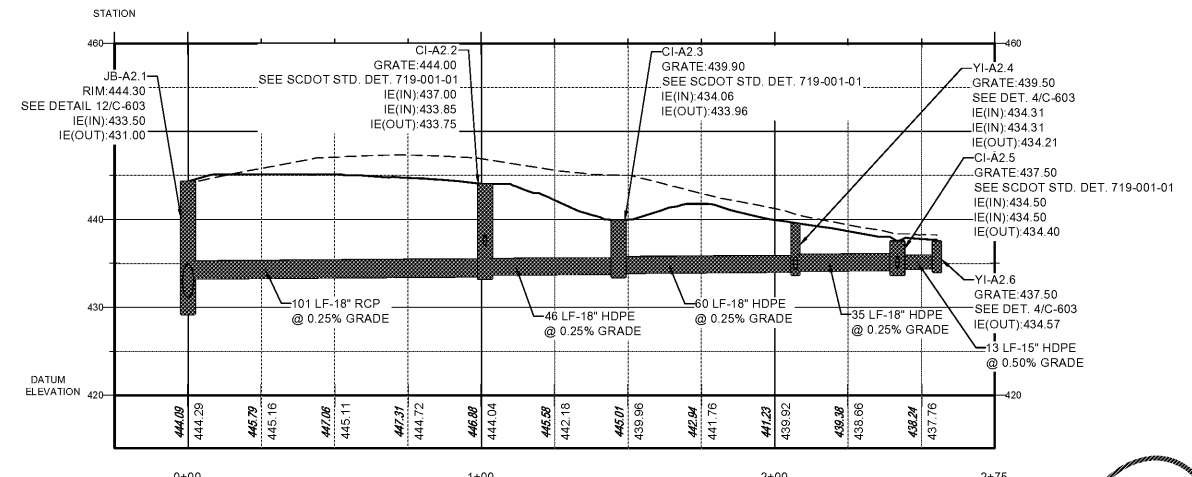
C/L STORM SEWER A2.4 TO A-2.4.1 PROFILE

SCALE: HOR: 1" = 30'
VER: 1" = 10'



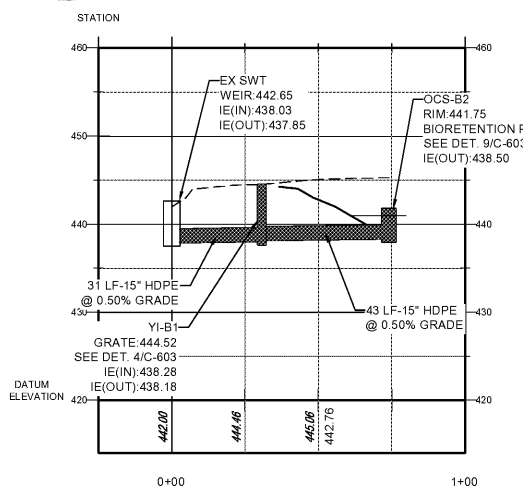
C/L STORM SEWER A2.2 TO A2.2.1 PROFILE

SCALE: HOR: 1" = 30'
VER: 1" = 10'



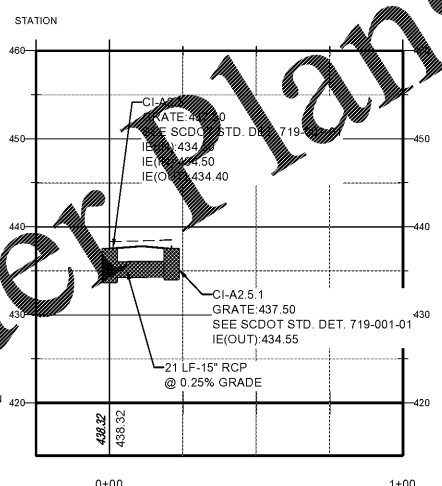
C/L STORM SEWER A2.1 TO A2.6 PROFILE

SCALE: HOR: 1" = 30'
VER: 1" = 10'



C/L STORM SEWER B0 TO B2 PROFILE

SCALE: HOR: 1" = 30'
VER: 1" = 10'



C/L STORM SEWER A2.5 TO A2.5.1 PROFILE

SCALE: HOR: 1" = 30'
VER: 1" = 10'

UTILITY WARNING:
 The underground utilities shown have been located from field survey information and existing drawings. The engineer makes no guarantee that the underground utilities shown comprise all such utilities in the area, either in service or abandoned. The engineer further does not warrant that the underground utilities shown are in the exact location indicated although he does certify that they are located as accurately as possible from information available. The engineer has not physically located the underground utilities.

This document is the property of Johnson, Laschner & Associates, P.C. The unauthorized reproduction, copying or otherwise use of this document is strictly prohibited and any infringement thereupon may be subject to legal action.