



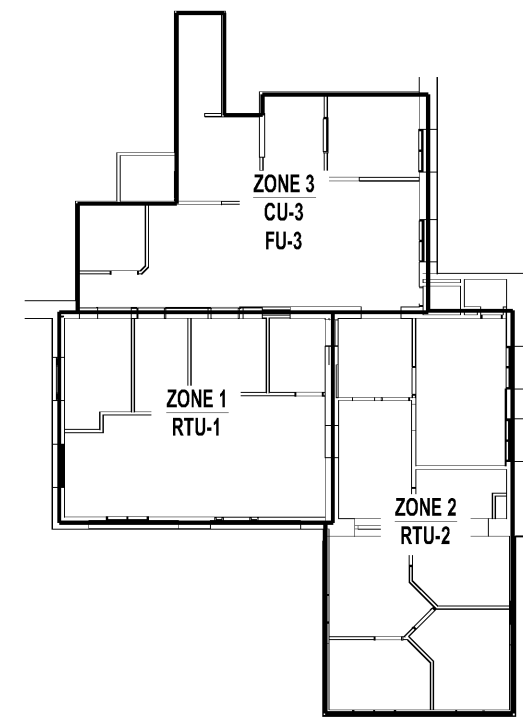
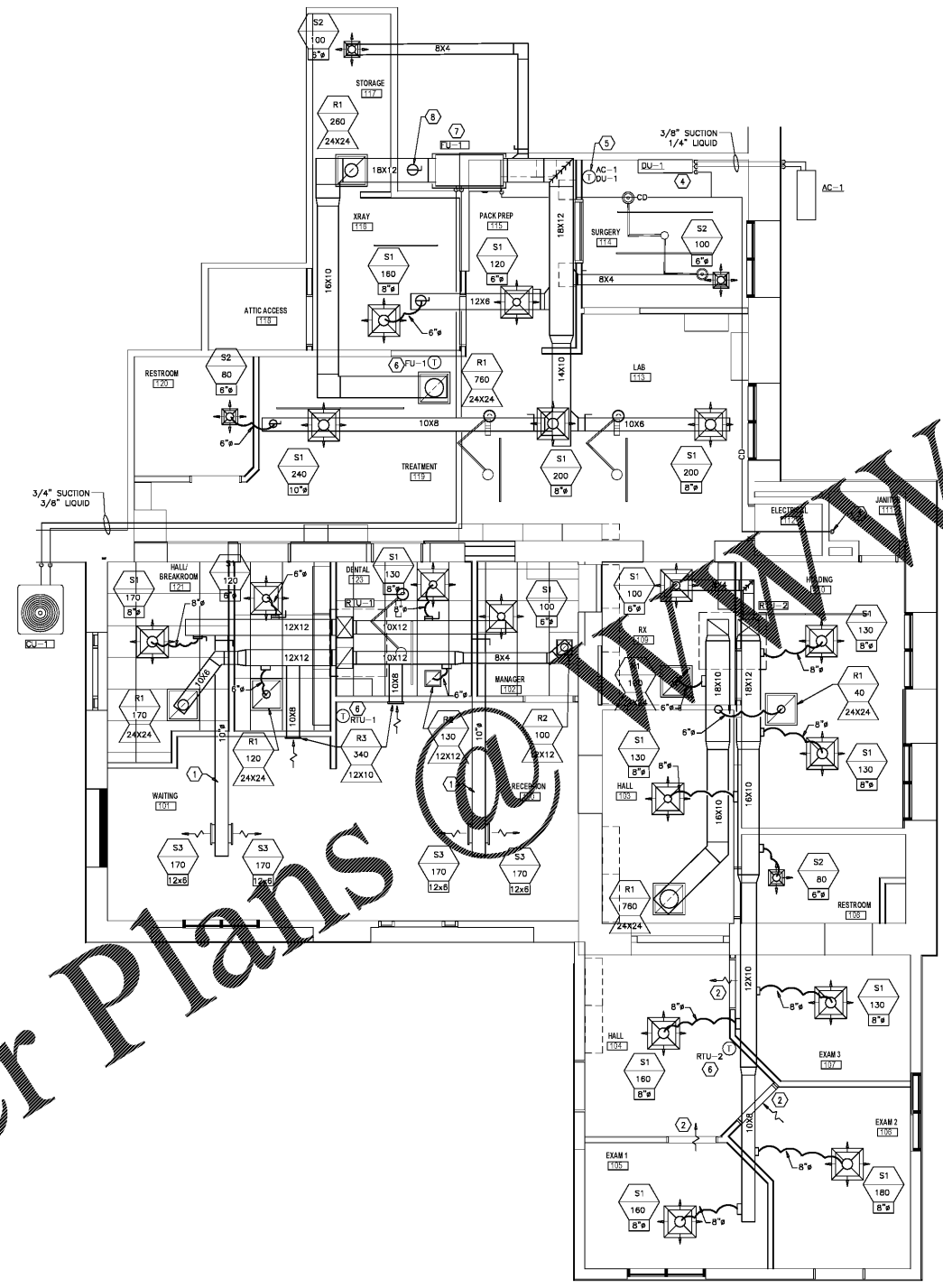
FAMILY VET GROUP

WEST ASHEVILLE FAMILY VET HOSPITAL
547 HAYWOOD ROAD
ASHEVILLE, NC 28809
MECHANICAL WORK (SUPPLY/RETURN)



- GENERAL NOTES**
- NEW DUCTWORK SHALL BE INSTALLED USING THE FOLLOWING MATERIALS:
 - RIGID: GALVANNEED SHEET METAL IN ACCORDANCE WITH ASHRAE AND SMACNA REQUIREMENTS FOR LOW PRESSURE DUCTWORK (1" WD)
 - WRAP: 1.5" THICK, 3/4 LB. DENSITY FIBERGLASS INSULATION WITH VAPOR BARRIER JACKET
 - FLEXIBLE: WIREMESH TYPE WCK OR EQUAL FLEXIBLE CLASS 1 AIR DUCT, 1.5" THICK, 3/4 LB. DENSITY FIBERGLASS INSULATION AND FIRE RETARDANT REINFORCED METALIZED POLYESTER FILM LAMINATED ON SHEET WIRE REINFORCING, WITH 1.5" VAPOR BARRIER (H-VINYL) AND SHALL MEET NFPA 95A AND UL STANDARD 181.
 - NEW DUCTWORK INSULATION SHALL BE INSTALLED USING THE FOLLOWING MATERIALS:
 - WRAP: 1.5" THICK, 3/4 LB. DENSITY FIBERGLASS INSULATION WITH VAPOR BARRIER JACKET
 - ALL PENETRATIONS THROUGH RATED WALLS AND FLOORS SHALL BE SEALED WITH A MATERIAL CAPABLE OF PREVENTING THE PASSAGE OF FLAMES AND HOT GASES WHEN SUBJECT TO THE REQUIREMENTS OF THE TEST STANDARD SPECIFIED FOR THE STOPS ASIM-5814.
 - DUCTWORK SIZES SHOWN ARE CLEAR INSIDE DIMENSIONS.
 - ALL DUCTWORK, BOTH SUPPLY AND RETURN, SHALL BE PART OF THE BID. THERE WILL BE NO EXTRA FOR DUCTWORK AFTER PROJECT HAS BEEN AWARDED.

- KEY NOTES**
- NEW SPIRAL DUCTWORK IN OPEN CEILING
 - UNDERCUT DOOR TO ALLOW RETURN AIR INTO ROOMWAY.
 - 3/4" CONDENSATE DRAIN TO SINK BELOW. CONCEAL PIPING IN WALL AND PUNCH OUT ABOVE MOP AND TERMINATE WITH APPROVED AIR GAP.
 - FURNISH AND INSTALL NEW DUCTLESS MINI SPLIT. SEE SHEET M4.0 FOR ADDITIONAL INFORMATION. CONCEAL ALL PIPING TO/FROM INDOOR UNIT IN WALL.
 - FURNISH AND INSTALL WALL MOUNTED CONTROLLER FOR DUCTLESS MINI SPLIT.
 - FURNISH AND INSTALL NEW THERMOSTAT FOR UNIT INDICATED. HONEYWELL, MODEL #T850.
 - NEW 8" OUTSIDE AIR INTAKE THROUGH ROOF.



ZONING PLAN
SCALE: 1/8" = 1'-0"

Order Plans

FLOOR PLAN - MECHANICAL WORK (SUPPLY/RETURN)
SCALE: 1/4" = 1'-0"



1301 Solana Blvd
Bldg 1, Suite 1420
Winston-Salem, NC 27220
+1 817 410 2858
WWW.DCPENN.COM
NORTH CAROLINA REGISTERED
ENGINEERING FIRM #1413

PROJECT: WEST ASHEVILLE FAMILY VET HOSPITAL
SHEET: MECHANICAL WORK (SUPPLY/RETURN)
M1.0