



FAMILY VET GROUP

WEST ASHEVILLE FAMILY VET HOSPITAL

547 HAYWOOD ROAD ASHEVILLE, NC 28809

LIGHTING WORK



DATE	NO.	DESCRIPTION

DATE: 11/11/2020

PROJECT #

PROJECT NAME

SHEET: LIGHTING WORK

NO. ISSUED FOR: 1

DATE: 11/11/2020

BY: JPH

CHECKED BY: JPH

DATE: 11/11/2020

PROJECT #

PROJECT NAME

SHEET: LIGHTING WORK

NO. ISSUED FOR: 1

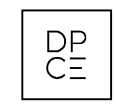
DATE: 11/11/2020

BY: JPH

CHECKED BY: JPH

DATE: 11/11/2020

E1.0



1301 Solene Blvd Bldg 1, Suite 1420 Westlake, TX 75262 +1 817 410 2855  
WWW.DONPEN.COM  
NORTH CAROLINA REGISTERED ENGINEERING FIRM F1413

SYM	MARK	DESCRIPTION	MFG	CATALOG#	LAMP TYPE	VOLTAGE	MOUNTING	REMARKS
D1	⊙	8" RECESSED LED DOWNLIGHT	HALO COMMERCIAL	P0820D010B/PDM8B35/61VC	LFD 20W	UNV	RECESSED	
P1	⊞	HANGING MINI-PENDANT LED	HOME DECORATOR'S COLLECTION	HB3533-281/1001599149	LFD 60W	UNV	SUSPENDED	
R1	▭	2' X 4' LED DIRECT/INDIRECT TROFFER	METALUX	24EN-LD2-45-UNV-L835-CD1-U	LFD 38W	UNV	GRID / LAY-IN	
R2	○	2' X 4' LED TROFFER W/ ACRYLIC LENS	METALUX	24GR-LD5-64-F1-UNV-L835-CD1-U	LFD 48W	UNV	GRID / LAY-IN	
R2-S	○	2' X 4' LOW PROFILE SURFACE LED	ENVISIONLED	LED-PNL-2X4-50W-35K-LF	LFD 50W	UNV	SURFACE	PROVIDE SURFACE MOUNT KIT
R2-S/EM	○	2' X 4' LOW PROFILE SURFACE LED W/ EMERGENCY INSTALLED	ENVISIONLED	LED-PNL-2X4-50W-35K-LF	LFD 50W	UNV	SURFACE	PROVIDE SURFACE MOUNT KIT W/ EMERGENCY BATTERY BACKUP
UC	- - -	UNDERCABINET LED LIGHTING	HALO-REC	HU100X0830P/HU101/HU109	LFD 5W/FT	UNV	SURFACE (UNDERCABINET)	
VA	▬	FLEXIBLE LINEAR LED LUMINAIRE	LUMENWREX	VA2PD-HLO-LED-80-500-30-5'-120-D1-1	LFD 20W	120 V	SUSPENDED (WITH EXCESS LENGTH) WITH SWITCHES TO PURCHASE	
X	⊗	EDGE-LIT EXIT SIGN WITH 90 MIN. EMERGENCY BALLAST	SURE-LITES	EUS70R	LFD 3.9W	UNV	SURFACE	COLORED LETTERS
Y	□	EXTERIOR EMERGENCY EGRESS LIGHT	SURE-LITES	SELW208Z	LFD 1W	UNV	SURFACE	

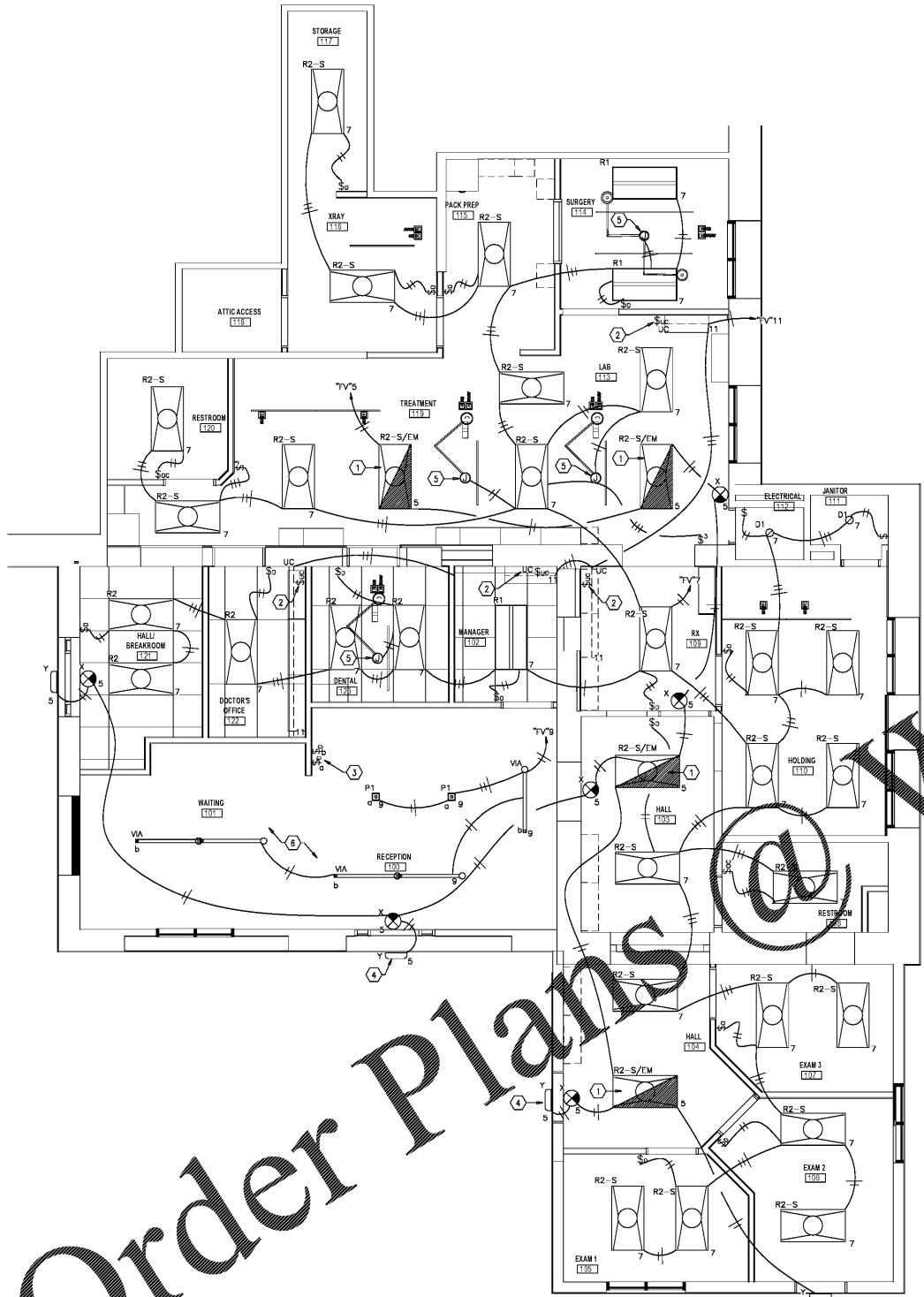
GENERAL NOTES:  
1. NO ALTERNATES WILL BE ACCEPTED FOR LIGHT FIXTURES UNLESS CONTRACTOR RECEIVES PRIOR APPROVAL DURING THE BIDDING PROCESS. ONCE THE CONTRACT IS AWARDED NO ALTERNATES WILL BE ACCEPTED.

GENERAL NOTES

- LIGHT FIXTURES SHALL BE SUPPORTED INDEPENDENTLY OF SUSPENDED CEILING OR THE SUSPENDED CEILING SHALL BE SUPPORTED WITHIN SIX (6) INCHES OF EACH CORNER OF THE FIXTURE IN ACCORDANCE WITH ASTM C 2356.
- ALL WALL AND CEILING VACANCY SENSORS IN CONJUNCTION WITH LOW VOLTAGE SWITCHES SHALL BE MANUAL ON/OFF, AUTO OFF UNLESS OTHERWISE NOTED.
- ALL LUMINAIRES AND LIGHTING CONTROL DEVICES IN AN ENCLOSED SPACE/ROOM ARE CIRCUITED TO THE SAME CIRCUIT. THE CIRCUIT NUMBER INDICATED BY LIGHT FIXTURE.
- IN A SPACE/ROOM WHERE THERE ARE MULTIPLE OCCUPANCY SENSORS, THE OCCUPANCY SENSORS SHALL BE WIRED AND/OR PROGRAMMED TO OPERATE IN PARALLEL SUCH THAT THE OCCUPANCY SENSOR SWITCHES ALL OF THE LIGHTING AT THE SAME TIME.
- PER ADMM, THE HEIGHT OF ALL SWITCHES AND CONTROLS SHALL BE:  
- MAXIMUM 48" ABOVE FINISHED FLOOR PER SECTION 4.2.5  
- MINIMUM 15" ABOVE FINISHED FLOOR PER SECTION 4.27.3
- SEE ARCHITECTURAL PLAN FOR COVER PLATE FINISH.
- ALL EXIT SIGNS ARE TO BE CIRCUITED TO THE EMERGENCY LIGHTING CIRCUIT IN THE SPACE/ROOM AHEAD OF ANY LIGHTING CONTROL DEVICES.
- CONTRACTOR TO ENSURE THAT EVERY LIGHTING CONTROL DEVICE SPECIFIED WITHOUT DIMMING CAPABILITY HAS THE ABILITY TO BE SWITCHED OUT FOR A CONTROL DEVICE WITH DIMMING CAPABILITY AT A FUTURE DATE.

KEY NOTES

- EMERGENCY LIGHT FIXTURE INDICATED SHALL FUNCTION AS AN UNSWITCHED NIGHT LIGHT - CONNECT TO CIRCUIT INDICATED.
- FURNISH AND INSTALL DIMMER SWITCH FOR UNDERCABINET LIGHTING "UC". EATON, MODEL #DAL08P.
- FURNISH AND INSTALL NEW SWITCH BANK FOR RECEPTION/WAITING AREA LIGHTS. VERIFY MOUNTING HEIGHT AND FINAL LOCATION WITH OWNER AND ARCHITECT PRIOR TO ROUGH-IN.
- FURNISH AND INSTALL NEW EXTERIOR EMERGENCY EGRESS LIGHT ABOVE DOOR. CONTRACTOR TO CIRCUIT TO NEW EMERGENCY LIGHTING CIRCUIT AS INDICATED.
- FURNISH AND INSTALL JUNCTION BOX ABOVE CEILING OR IN WALL FOR 120 VOLT POWER CONNECTION TO WALL MOUNTED EXAM LIGHT - CONNECT TO CIRCUIT INDICATED. COORDINATE EXACT LOCATION WITH ARCHITECTURAL EQUIPMENT PLAN PRIOR TO ROUGH-IN. ELECTRICAL CONTRACTOR SHALL CONNECT POWER HARNESS CORD TO POWER SUPPLY. EXAM LIGHT BY OTHERS. CONTROLS ARE INTEGRAL TO LIGHT.
- ALL LIGHTING FIXTURES IN RECEPTION AREA ARE SHOWN FOR INFORMATION ONLY (INCLUDING SCHEDULE) CONTRACTOR SHALL VERIFY FIXTURE MODELS WITH OWNER AND ARCHITECT PRIOR TO BID. (CIRCUITING AND CONTROL INTENT SHALL REMAIN AS SHOWN IN PLAN).



FLOOR PLAN - LIGHTING WORK  
SCALE: 1/4" = 1'-0"



Order Plans @ WWW.LDILine.com