

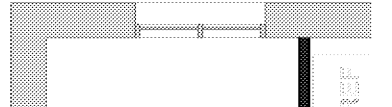
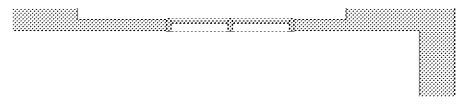
Order Plans @ www.LDLine.com



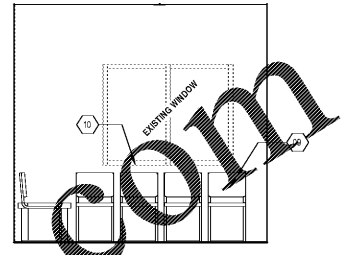
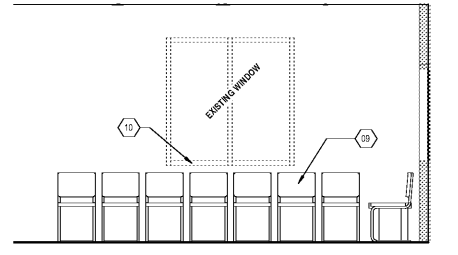
FAMILY VET GROUP

WEST ASHEVILLE FAMILY VET HOSPITAL
547 HAYWOOD ROAD
ASHEVILLE, NC 28809

INTERIOR ELEVATIONS



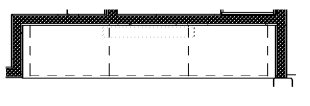
PLAN VIEWS



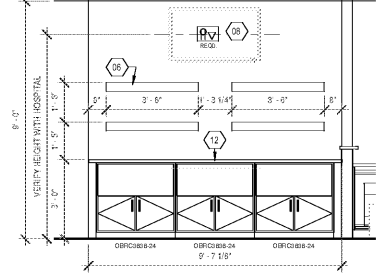
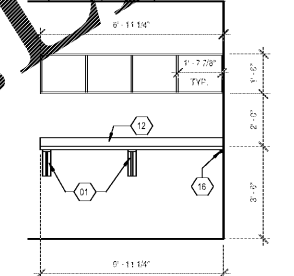
ELEVATIONS

4 WAITING / 101 - SOUTH ELEVATION
A7.2 3/8" = 1'-0"

3 WAITING / 101 - WEST ELEVATION
A7.2 3/8" = 1'-0"



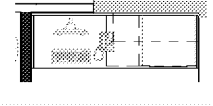
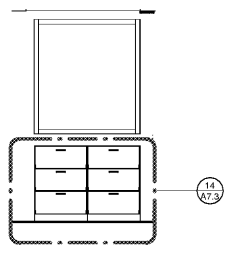
PLAN VIEWS



ELEVATIONS

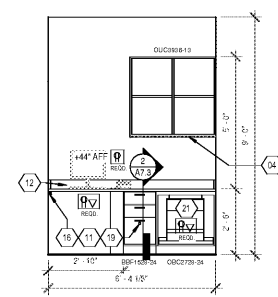
5 HALL/BREAKROOM 121 - WEST ELEVATION
A7.2 3/8" = 1'-0"

2 WAITING / 101 - NORTH ELEVATION
A7.2 3/8" = 1'-0"



PLAN VIEWS

6 ELEVATION - PASS THRU CABINERY (O.R. SIDE)
A7.2 3/8" = 1'-0"



ELEVATIONS

1 MANAGER / 102 - NORTH ELEVATION
A7.2 3/8" = 1'-0"

MILLWORK KEYNOTES

- 01 PLASTIC LAMINATE TAPERED SUPPORT BRACKET, MATCH COUNTERTOP LAMINATE.
- 02 BULKHEAD, GYPSUM BOARD ON METAL (OR WOOD) STUD CONSTRUCTION.
- 03 4" HIGH CURB FOR CAGES. SEE DETAIL. SHEET VINYL COVE BASE TO BE INSTALLED ON FACE.
- 04 UNDERCABINET LED STRIP LIGHTING. SEE DETAIL & SEE ELECTRICAL DRAWINGS.
- 05 CAGES TO BE CONFIGURED BY MANUFACTURER. INSTALLED BY HOSPITAL.
- 06 PLASTIC LAMINATE SHELVES. HARDWARE TO BE INTEGRAL.
- 07 RUN DOOR AND PANELS TO BE CONFIGURED BY MANUFACTURER, INSTALLED BY HOSPITAL.
- 08 FLAT SCREEN TV PROVIDED & INSTALLED BY G.C. PROVIDE BLOCKING AND WALL BRACKET. REFER TO EQUIPMENT SCHEDULE FOR INFORMATION. COORDINATE EXACT HEIGHT OF TV WITH HOSPITAL PRIOR TO INSTALLING BLOCKING.
- 09 FURNITURE BY OTHERS.
- 10 3/4" THK PLASTIC LAMINATE WINDOW SILL, PL-1 FINISH.
- 11 OPEN KNEE SPACE. PROVIDE 2" DIA. GROMMET THROUGH COUNTERTOP CENTERED IN SPACE.
- 12 PLASTIC LAMINATE COUNTERTOP (WITH EDGE BANDING TYP.), REFER TO GENERAL MILLWORK NOTES.
- 13 DRUG CABINET (VET EQUIPMENT BY HOSPITAL, COORDINATE EXACT LOCATION W/ HOSPITAL, PROVIDE BLOCKING).
- 14 PROVIDE TAG WALL TACK SURFACE. REFER TO FINISH PLAN FOR SPECIFICATIONS. NOTE: AT ALL EXPOSED OUTSIDE EDGES, PROVIDE ROUNDED EDGE METAL TRANSITION STRIP FROM KOROSAL.
- 15 PROVIDE 1/4" BEAD BOARD WANSKOT PANEL, PAINTED HPT-2 ON ALL WALLS. PROVIDE 1" WIDE TRIM AROUND OUTSIDE EDGES. EXTEND TRIM BEHIND BUILT-IN BENCHES (WHERE SHOWN).
- 16 2" x 4" (NOMINAL) WOOD CLEAT FOR WORKSURFACE SUPPORT. PAINT IN FIELD TO WALL COLOR FINISH.
- 17 PLASTIC LAMINATE FILLER PANEL AS REQUIRED.
- 18 PLASTIC LAMINATE SHELF ABOVE CAGES, PL-1 FINISH.
- 19 PROVIDE LOCK ON CABINET.
- 20 CORIAN SOLID SURFACE COUNTERTOP SS-1.
- 21 PLASTIC LAMINATE PRINTER CABINET W/ (1) PULL OUT SHELF.
- 22 NOT USED.
- 23 27" WIDE PLASTIC LAMINATE FALSE FRONT PANEL (NO PULL HARDWARE), FLUSH WITH FRONT EDGE OF COUNTERTOP.
- 24 APPLIANCE BY GENERAL CONTRACTOR, REFER TO APPLIANCE LEGEND ON EQUIPMENT PLANS. PROVIDE REQUIRED ELECTRICAL PER APPLIANCE SPECS.
- 25 PLASTIC LAMINATE PANEL WITH ACCESS HOLE (WHERE SHOWN (27"W) SEE DETAIL.
- 26 3/4" LAMINATE END PANEL.

MILLWORK LEGEND

XX##	CABINET TYPE	WIDTH*	HEIGHT*	TYPICAL ELEVATION HATCH LEGEND
BC	BASE CABINET			SOLID SURFACE / QUARTZ
HSB	HAND SINK BASE			GYP. BOARD BULKHEAD
SB	SINK BASE			TAG WALL SURFACE
OBC	OPEN BASE CABINET			ITEMS IN SECTION
BFBC	BOX, FILE, FILE BASE CABINET			
DBC	DRAWER BASE CABINET			
UC	UPPER CABINET			
GUC	GLASS UPPER CABINET			
OUC	OPEN UPPER CABINET			
ORC	OPEN RETAIL CABINET			
TC	TALL CABINET			
F.E.	FINISHED END OF CABINET			
V.I.F.	VERIFY IN FIELD			

* DENOTES POWER AND/OR VOICEDATA RECEPTACLE TO BE INSTALLED FOR THIS WORK AREA. COORDINATE WITH ELECTRICAL PLANS FOR CONFIRMATION OF DEVICE TYPE.

* DENOTES QUAD (4 PLEX) POWER RECEPTACLE TO BE INSTALLED FOR THIS WORK AREA. COORDINATE WITH ELECTRICAL PLANS FOR CONFIRMATION OF DEVICE TYPE.

A7.2

DATE: _____
SCALE: _____
SHEET: _____