



FAMILY VET GROUP

WEST ASHEVILLE FAMILY VET HOSPITAL
547 HAYWOOD ROAD
ASHEVILLE, NC 28809



PLAN VIEWS

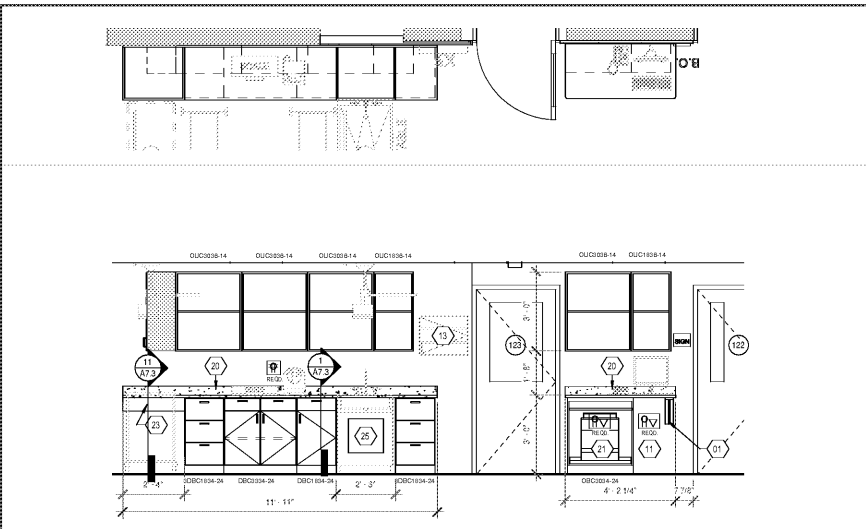
ELEVATIONS

PLAN VIEWS

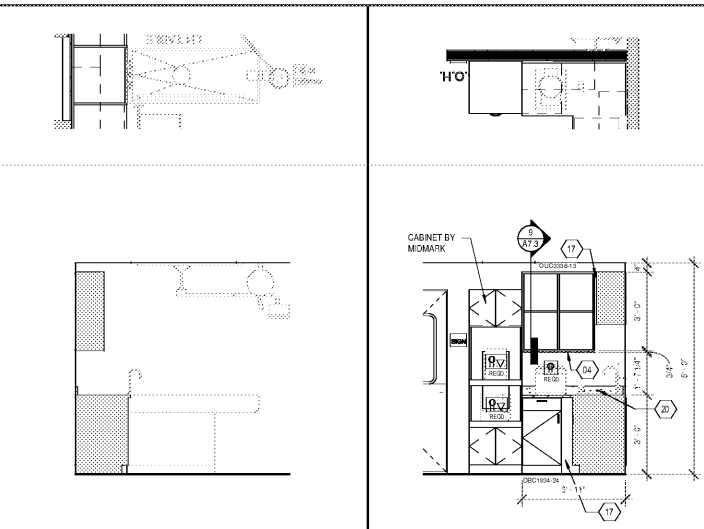
ELEVATIONS

PLAN VIEWS

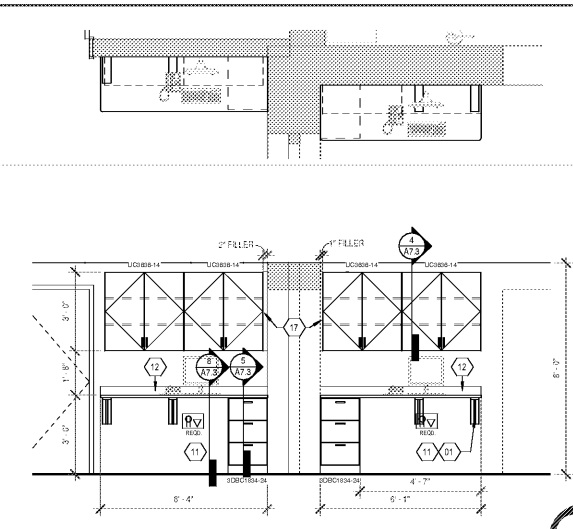
ELEVATIONS



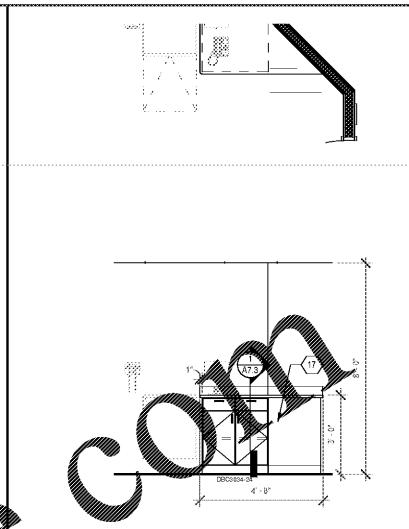
11 TREATMENT / 119 - SOUTH ELEVATION
10 TREATMENT / 119 - WEST ELEVATION



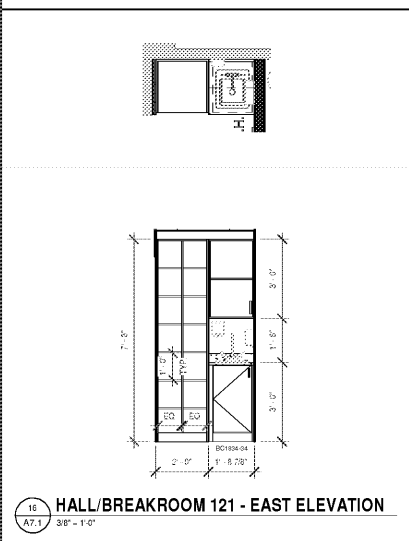
8 LAB/RX / 113 - NORTH ELEVATION
9 LAB/RX / 113 - EAST ELEVATION



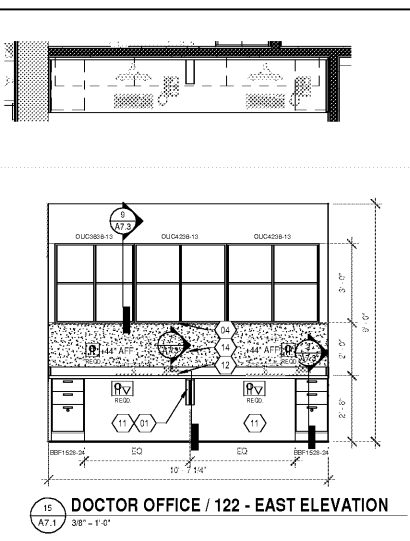
4 HALL / 104 - WEST ELEVATION



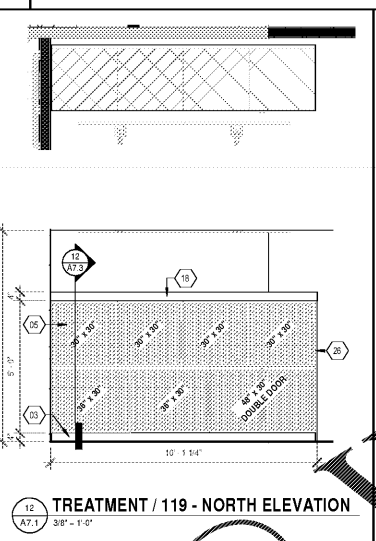
3 EXAM 3 / 107 - SOUTH ELEVATION



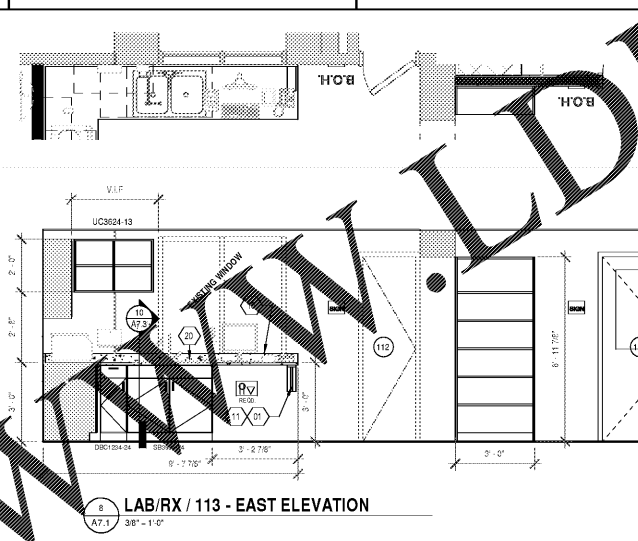
16 HALL/BREAKROOM 121 - EAST ELEVATION



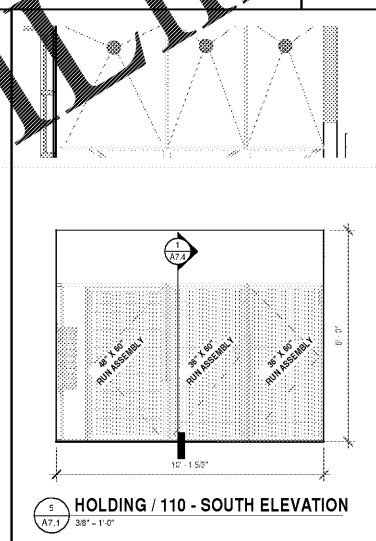
15 DOCTOR OFFICE / 122 - EAST ELEVATION



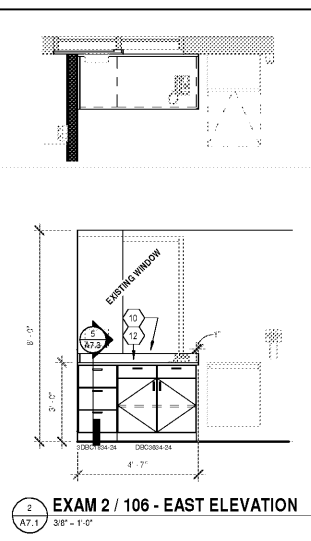
12 TREATMENT / 119 - NORTH ELEVATION



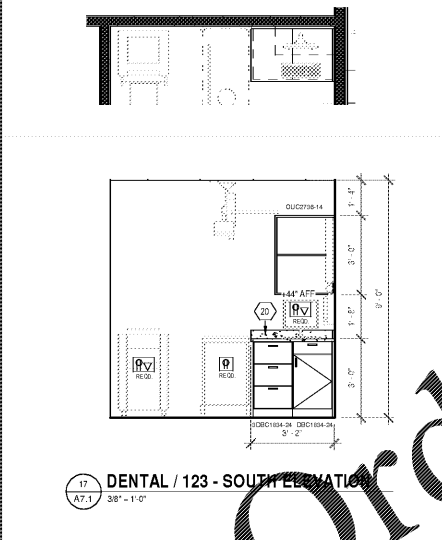
9 LAB/RX / 113 - EAST ELEVATION



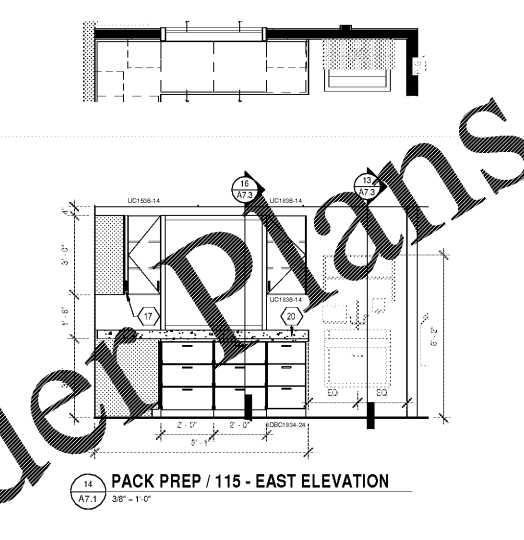
5 HOLDING / 110 - SOUTH ELEVATION



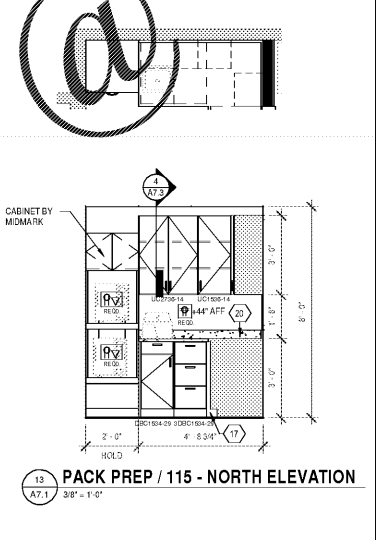
2 EXAM 2 / 106 - EAST ELEVATION



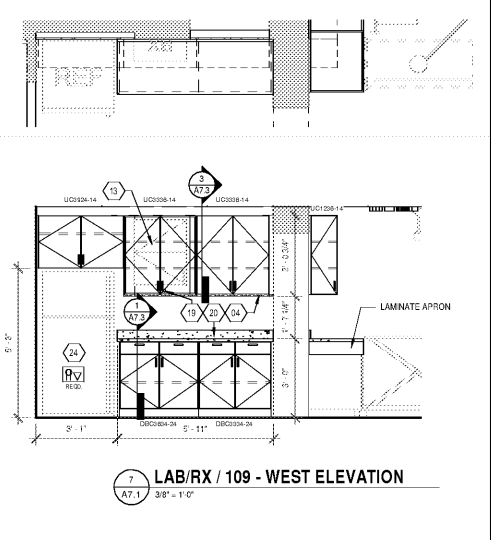
17 DENTAL / 123 - SOUTH ELEVATION



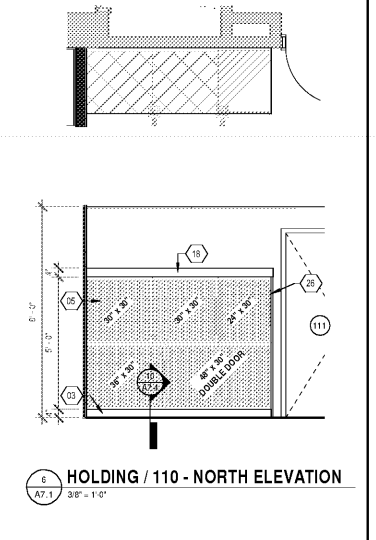
14 PACK PREP / 115 - EAST ELEVATION



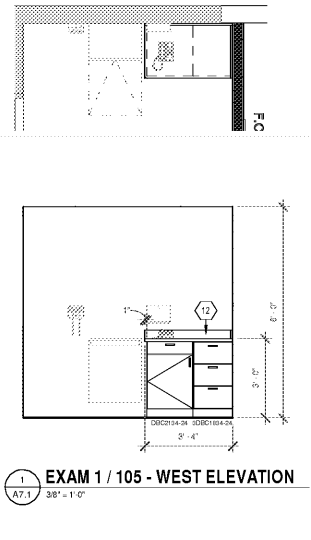
13 PACK PREP / 115 - NORTH ELEVATION



7 LAB/RX / 109 - WEST ELEVATION



6 HOLDING / 110 - NORTH ELEVATION



1 EXAM 1 / 105 - WEST ELEVATION

Order Plans @

MILLWORK KEYNOTES

- 01 PLASTIC LAMINATE TAPERED SUPPORT BRACKET, MATCH COUNTERTOP LAMINATE
- 02 BULK-HEAD, GYPSUM BOARD ON METAL (OR WOOD) STUD CONSTRUCTION
- 03 4" HIGH CURB FOR CAGES. SEE DETAIL. SHEET VINYL COVEBASE TO BE INSTALLED ON FACE
- 04 UNDERCABINET LED STRIP LIGHTING. SEE DETAIL & SEE ELECTRICAL DRAWINGS
- 05 CAGES TO BE CONFIGURED BY MANUFACTURER. INSTALLED BY HOSPITAL
- 06 PLASTIC LAMINATE SHELVES. HARDWARE TO BE INTEGRAL
- 07 RUN DOOR AND PANELS TO BE CONFIGURED BY MANUFACTURER, INSTALLED BY HOSPITAL
- 08 FLAT SCREEN TV PROVIDED & INSTALLED BY G.C. PROVIDE BLOCKING AND WALL BRACKET. REFER TO EQUIPMENT SCHEDULE FOR INFORMATION. COORDINATE EXACT HEIGHT OF TV WITH HOSPITAL PRIOR TO INSTALLING BLOCKING.
- 09 FURNITURE BY OTHERS
- 10 3/4" THK PLASTIC LAMINATE WINDOW SILL, PL-1 FINISH
- 11 OPEN KNEE SPACE. PROVIDE 2" DIA. GROMMET THROUGH COUNTERTOP CENTERED IN SPACE
- 12 PLASTIC LAMINATE COUNTERTOP (WITH EDGE BANDING TYP.), REFER TO GENERAL MILLWORK NOTES
- 13 DRUG CABINET (WET EQUIPMENT BY HOSPITAL, COORDINATE EXACT LOCATION W/ HOSPITAL); PROVIDE BLOCKING
- 14 PROVIDE TAC WALL TACK SURFACE. REFER TO FINISH PLAN FOR SPECIFICATIONS. NOTE: AT ALL EXPOSED OUTSIDE EDGES, PROVIDE ROUNDED EDGE METAL TRANSITION STRIP FROM KOROSEAL
- 15 PROVIDE 1/4" BEAD BOARD WANSCOT PANEL, PAINTED HPT 2 ON ALL WALLS. PROVIDE 1" WIDE TRIM AROUND OUTSIDE EDGES. EXTEND TRIM BEHIND BUILT-IN BENCHES (WHICHEVER SHOWN)
- 16 2" x 2" NOMINAL WOOD CLEAT FOR WORKSURFACE SUPPORT. PAINT IN FIELD TO WALL COLOR FINISH
- 17 PLASTIC LAMINATE FILLER PANEL AS REQUIRED
- 18 PLASTIC LAMINATE SHELF ABOVE CAGES, PL-1 FINISH
- 19 PROVIDE LOCK ON CABINET
- 20 CORIAN SOLID SURFACE COUNTERTOP SS-1
- 21 PLASTIC LAMINATE PRINTER CABINET W/ (1) PULL OUT SHELF
- 22 NOT USED
- 23 27" WIDE PLASTIC LAMINATE FALSE FRONT PANEL (NO PULL-HARDWARE). FLUSH WITH FRONT EDGE OF COUNTERTOP
- 24 APPLIANCE BY GENERAL CONTRACTOR. REFER TO APPLIANCE LEGEND ON EQUIPMENT PLANS. PROVIDE REQUIRED ELECTRICAL PER APPLIANCE SPECS
- 25 PLASTIC LAMINATE PANEL WITH ACCESS HOLE (WHERE SHOWN) (27") SEE DETAIL
- 26 3/4" LAMINATE END PANEL

PLASTIC LAMINATE LEGEND

- PL-1 PLASTIC LAMINATE CABINETS
MFR: WILSONART
STYLE: PREMIUM LAMINATES
COLOR: 766K-12 WALNUT HEIGHTS
COMMENTS: REQUIRES 3mm AT DRAWERS & DOORS, 1mm ELSEWHERE
- PL-2 PLASTIC LAMINATE COUNTERTOPS
MFR: WILSONART
STYLE: STANDARD LAMINATE
COLOR: 485K-38 GREEN SAPSTONE
COMMENTS: REQUIRES 1mm EDGE BANDING (TYP)

MILLWORK LEGEND

- XX## CABINET TYPE WIDTH HEIGHT
- BC BASE CABINET
- HSB HAND SINK BASE
- SB SINK BASE
- ODC OPEN BASE CABINET
- BFTBC BOX, FILE, FILE BASE CABINET
- DEC DRAWER BASE CABINET
- UC UPPER CABINET
- GUC GLASS UPPER CABINET
- OUC OPEN UPPER CABINET
- ORC OPEN RETAIL CABINET
- TC TALL CABINET
- F.E FINISHED END OF CABINET
- V.I.F. VERIFY IN FIELD
- TYPICAL ELEVATION HATCH LEGEND
- SOLID SURFACE / QUARTZ
- GYP BOARD BULK-HEAD
- TAC WALL SURFACE
- ITEMS IN SECTION
- 01 DENOTES POWER AND/OR VOICE DATA RECEPTACLE TO BE INSTALLED FOR THIS WORK AREA. COORDINATE WITH ELECTRICAL PLANS FOR CONFIRMATION OF DEVICE TYPE
- 02 DENOTES QUAD (4-PLX) POWER RECEPTACLE TO BE INSTALLED FOR THIS WORK AREA. COORDINATE WITH ELECTRICAL PLANS FOR CONFIRMATION OF DEVICE TYPE

A7.1

DATE: 01/11/2017
SCALE: AS SHOWN
DRAWN BY: J.P. [unintelligible]
CHECKED BY: [unintelligible]
INTEGRITY: [unintelligible]