

FAMILY VET FINISH LEGEND					
SYMBOL	MANUFACTURER	STYLE / SERIES	COLOR	SIZE	NOTES
WALL TILE					
WT-1	NATURAL STONE AND TILE	TBD	TBD	TBD	FIELD TILE; GROUT GR-1
PT-1	SHERWIN WILLIAMS	PRO INDUSTRIAL PRE CATALYZED WB EPOXY EG SHEL_K45W1150 SERIES	TBD		FIELD PAINT
PT-2	SHERWIN WILLIAMS	PRO INDUSTRIAL PRE CATALYZED WB EPOXY EG SHEL_K45W1150 SERIES	TBD		ACCENT PAINT
PT-3	SHERWIN WILLIAMS	PRO INDUSTRIAL PRE CATALYZED WB EPOXY EG SHEL_K45W1150 SERIES	TBD		ACCENT PAINT
PT-4	SHERWIN WILLIAMS	PRO INDUSTRIAL PRE CATALYZED WB EPOXY EG SHEL_K45W1150 SERIES	TBD		ACCENT PAINT
HIGH PERFORMANCE PAINT					
HPT-1	SHERWIN WILLIAMS	PRO INDUSTRIAL WATERBASED CATALYZED EPOXY GLOSS	TBD		HIGH PERFORMANCE ACCENT PAINT
HPT-2	SHERWIN WILLIAMS	PRO INDUSTRIAL WATERBASED CATALYZED EPOXY GLOSS	TBD		HIGH PERFORMANCE ACCENT PAINT
HPT-3	SHERWIN WILLIAMS	PRO INDUSTRIAL WATERBASED CATALYZED EPOXY GLOSS	TBD		HIGH PERFORMANCE ACCENT PAINT
HPT-4	SHERWIN WILLIAMS	PRO INDUSTRIAL WATERBASED CATALYZED EPOXY GLOSS	TBD		HIGH PERFORMANCE ACCENT PAINT
GROUT					
GR-1	LATICRETE	EPOXY GROUT	TBD		1/8" GROUT LINE; TYPICAL MATCH CAULK COLOR TO GROUT FOR 90% BASE
VINYL TILE					
LVT-1	ARMSTRONG	TBD	TBD		BRICK INSTALL METHOD
VINYL COMPOSITION TILE					
VCT-1	ARMSTRONG	TBD	TBD		BRICK INSTALL METHOD
RESILIENT BASE					
VB-1	JOHNSONITE	RUBBER COVE BASE	TBD		
VB-2	JOHNSONITE	RUBBER COVE BASE	TBD		
EPOXY					
EP-1	DUR-A-FLEX	TBD	TBD		
ACOUSTICAL CEILING TILES					
ACT-1	USG	MARS HEALTHCARE CEILINGS	(NRC) 0.70	2' X 2'	
ACT-2	USG	OLYMPIA MICRO CLIMA PLUS	(NRC) 0.60	2' X 2'	
PLASTIC LAMINATE					
PL-1	TBD	TBD	TBD		CABINETS: CUSTOM COLOR EDGE BANDING; 1MM AT DRAWERS/DOORS; 1MM ELSEWHERE
PL-2	TBD	TBD	TBD		COUNTERS: CUSTOM COLOR EDGE BANDING; 1MM THICK
SOLID SURFACE					
SS-1	CORIAN	TBD	TBD		
TACKABLE WALL SURFACE					
TW-1	WALLTALKERS	TAC WALL	TBD		

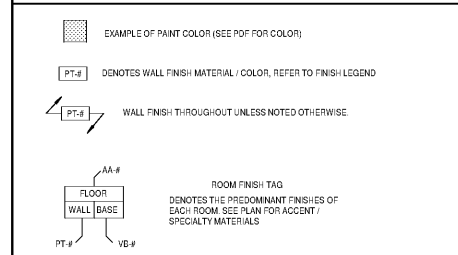
GENERAL FINISH NOTES

- A. ENSURE SURFACES TO RECEIVE FINISHES ARE CLEAN, TRUE, AND FREE OF IRREGULARITIES. DO NOT PROCEED WITH WORK UNTIL UNSATISFACTORY CONDITIONS HAVE BEEN CORRECTED.
- B. REPAIR EXISTING SURFACES TO REMAIN AS REQUIRED FOR APPLICATION OF NEW FINISHES.
- C. ALL GYPSUM BOARD BULKHEADS TO RECEIVE PAINT COLOR DESIGNATED "GYP" BOARD CEILING PAINT. REFER TO FINISH LEGEND.
- D. PAINT REQUIREMENTS:
 - a. NON-WASHABLE AREAS SHALL USE (INDICATED AS PT-#):
 - GYP BOARD CEILING: PRIMER: PROMAR 200 ZERO VOC INTERIOR LATEX PRIMER, B26W2600; 1ST FINISH COAT: PROMAR 200 ZERO VOC INTERIOR LATEX EG-SHEL, B26-4620 SERIES; 2ND FINISH COAT: PROMAR 200 ZERO VOC INTERIOR LATEX EG-SHEL, B26-4650 SERIES
 - b. WASHABLE AREAS SHALL USE (INDICATED AS HPT-#):
 - GYP BOARD WALLS: PRIMER: PROMAR 200 ZERO VOC INTERIOR LATEX PRIMER, B26W2600; 1ST FINISH COAT: PRO INDUSTRIAL PRE-CATALYZED WB EPOXY EG-SHEL, K45W1150 SERIES; 2ND FINISH COAT: PRO INDUSTRIAL PRE-CATALYZED WB EPOXY EG-SHEL, K45W1150 SERIES
- E. G.C. PAINT ANY ELECTRICAL PANELS, CONDUIT & PIPING THAT ARE ALONG WALLS TO MATCH ADJACENT WALL FINISH.
- F. ALL WALLS DESIGNATED WITH AN ACCENT MARKER TO RECEIVE PAINT COLOR PT-1.
- G. REFER TO DETAIL SHEETS FOR ALL FINISH TRIM & TRANSITION DETAILS.
- H. NOTE ALL INTERIOR DOOR FRAMES & WINDOW FRAMES TO BE PAINTED HPT-1 UNLESS OTHERWISE NOTED.

FINISH WORK REQUIREMENTS

- (ATTIC STOCK) GENERAL CONTRACTOR TO PROVIDE OWNER WITH ATTIC STOCK OF THE FOLLOWING PRODUCTS & QUANTITIES:
 - WALL TILE (1 box)
 - PORCELAIN TILE (1 box)
 - CEILING TILE (1 box)
 - PAINTS (gallon or close to it)
- AT BID SUBMISSION, GENERAL CONTRACTOR TO PROVIDE ARCHITECT WITH THE FOLLOWING:
 - 1" EPOXY FLOORING CONTRACTORS CERTIFICATE OF LEVEL, ONE INSTALLER PER EPOXY MANUFACTURER'S REQUIREMENTS.
- ALL FLOORING MUST BE PROTECTED AFTER INSTALLATION.
- GENERAL CONTRACTOR TO CONTACT VCT, EPOXY, AND TILE REPRESENTATIVE FOR CLEANING PRODUCTS

FINISH SYMBOL LEGEND

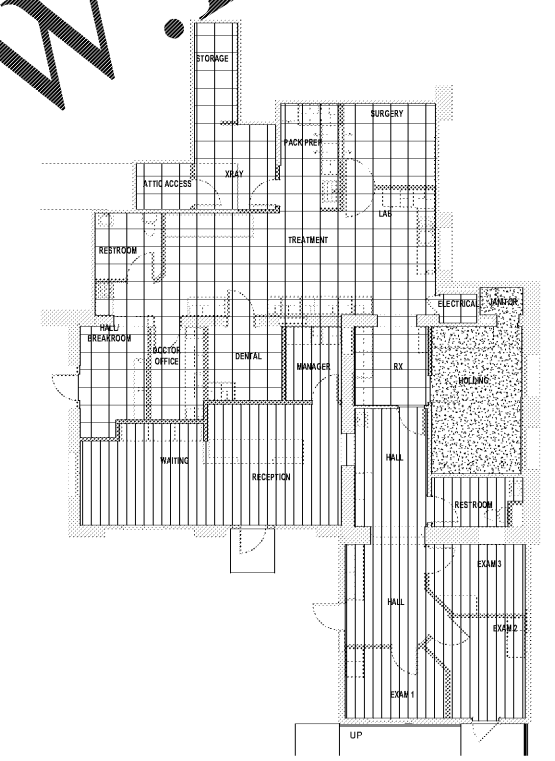
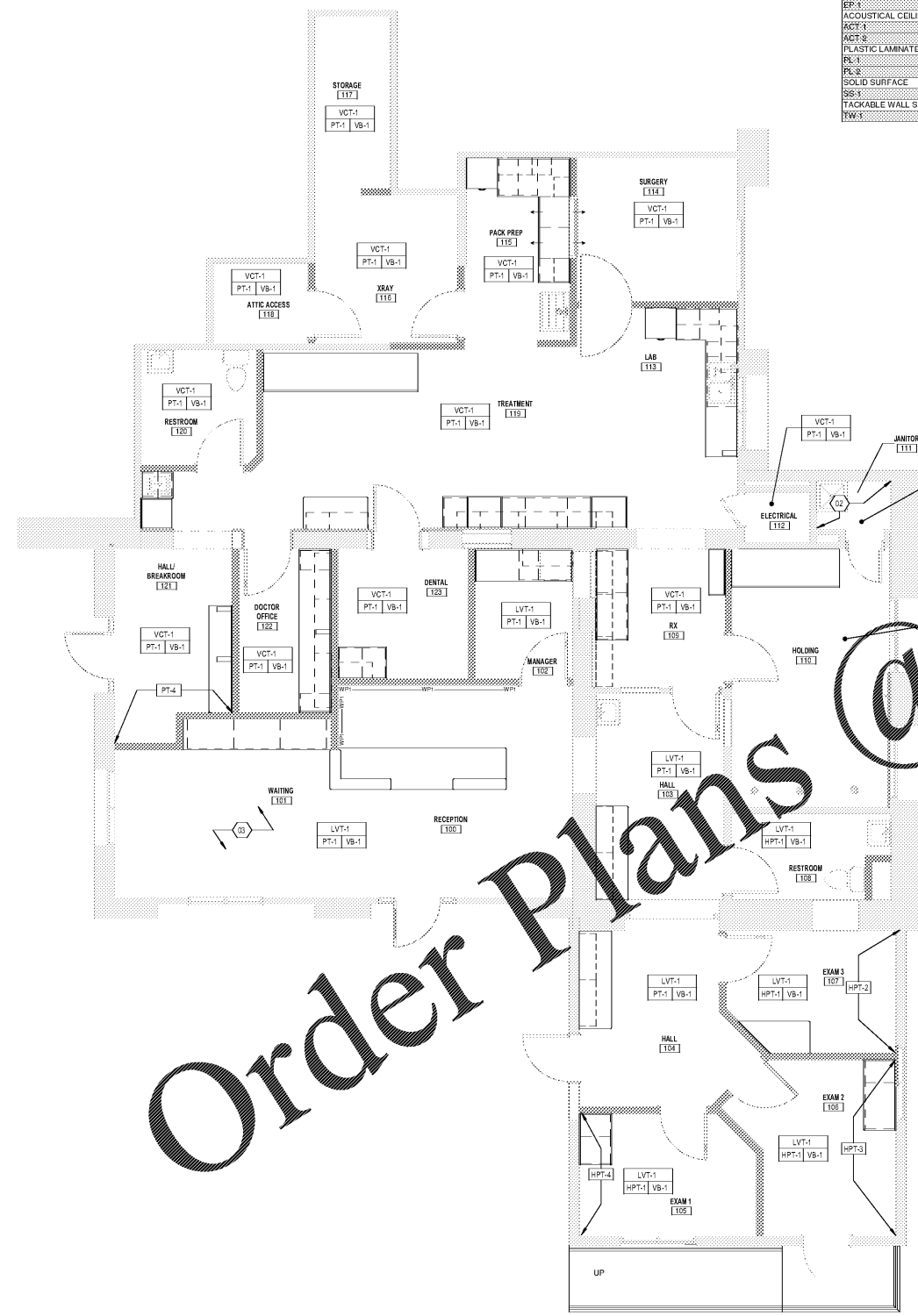


FLOORING GENERAL NOTES

- A. ENSURE SURFACES TO RECEIVE FINISHES ARE CLEAN, TRUE, AND FREE OF IRREGULARITIES. DO NOT PROCEED WITH WORK UNTIL UNSATISFACTORY CONDITIONS HAVE BEEN CORRECTED. DO NOT PROCEED WITH INSTALLATION UNTIL SUBSTRATE HAS BEEN TESTED & ADHERED TO FLOORING SPECIFICATIONS.
- B. REPAIR EXISTING SURFACES TO REMAIN AS REQUIRED FOR APPLICATION OF NEW FINISHES.
- C. WHERE A CHANGE IN FLOORING MATERIAL OCCURS, SEE TYPICAL FLOORING TRANSITION DETAILS FOR TRANSITION STRIP SPECIFICATION. WHERE MATERIAL CHANGES OCCUR AT A DOOR, CENTER ALL TRANSITIONS WITH THE DOOR.
- D. AREAS CALLED OUT FOR SEALED CONCRETE SHALL HAVE ALL EXISTING FINISHES REMOVED TO BARE CONCRETE. NO ADDITIONAL SEALANT IS REQUIRED.
- E. AT ALL WALL BASE MATERIAL TRANSITIONS, G.C. TO PROVIDE 1/4" METAL TRANSITION STRIP BETWEEN MATERIALS.
- F. 4" HIGH INTEGRAL COVE BASE TO BE INSTALLED IN ALL SURVEY / OR LOCATIONS, ISOLATION ROOMS, & HOLDING AREAS.
- G. AT ALL NEW EPOXY FLOOR INSTALLATION AREAS, EPOXY TOP COAT TO BE DUR-A-GRP WITH ARMOR TOP COATING. GENERAL CONTRACTOR TO PROVIDE A MOCK UP IN A 48" X 48" AREA FOR HOSPITAL STAFF TO REVIEW. REFER TO PROJECT MANUAL FOR FURTHER INFORMATION.

FINISH PLAN KEYNOTES

- (01) EXISTING WINDOW FRAME TO BE PAINTED HPT-2
- (02) WALL TILE (WT-1) TO BE INSTALLED. INSTALL WHERE INDICATED ON ELEVATIONS
- (03) NEW EXPOSED SPIRAL DUCTWORK IN THIS AREA TO BE PAINTED COLOR: TBD



FIRST FLOOR FLOORING KEY PLAN

FLOORING LEGEND

[Symbol]	LVT-1 SHEET VINYL - PLANK FLOORING
[Symbol]	VCT-1 VINYL COMPOSITION TILE
[Symbol]	EP-1 EPOXY FLOORING

WALL PROTECTION LEGEND

WPT-1 LMC INDICATES CUSTOM WOOD MOLDING DETAIL. REFER TO DETAIL 11 ON THIS SHEET AND ELEVATIONS

Order Plans @ www.LDILine.com

1 FIRST FLOOR FINISH PLAN
1/4" = 1'-0"

FAMILY VET GROUP

WEST ASHEVILLE FAMILY VET HOSPITAL

547 HAYWOOD ROAD
ASHEVILLE, NC 28809

FINISH PLAN

14407

SEAL

14407

DATE	NO. REVISIONS	BY	DATE	NO. REVISIONS

A13.1

THESE DRAWINGS ARE OWNED BY MD ARCHITECTS. NO PART OF THESE DRAWINGS SHALL BE REPRODUCED OR TRANSMITTED IN ANY FORM OR BY ANY MEANS, ELECTRONIC OR MECHANICAL, WITHOUT THE WRITTEN PERMISSION OF MD ARCHITECTS. ALL RIGHTS RESERVED. ANY UNAUTHORIZED REPRODUCTION OR USE IS PROHIBITED.