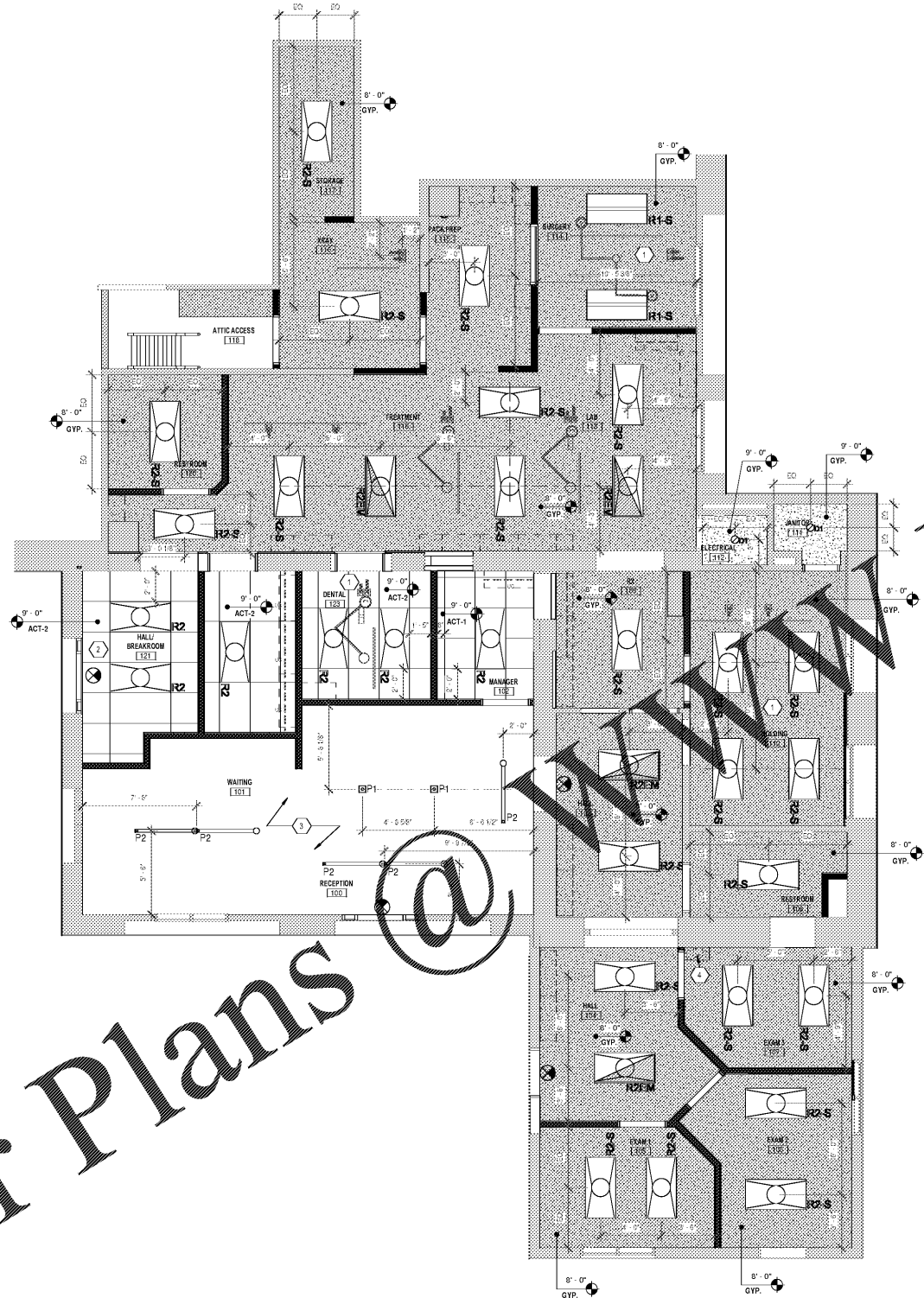


Order Plans @



1 FIRST FLOOR REFLECTED CEILING PLAN
1/4" = 1'-0"



REFLECTED CEILING PLAN LEGEND

- GENERAL NOTE: REFER TO ELECTRICAL DRAWINGS FOR LIGHTING SPECIFICATIONS.
- 2' X 4' ACOUSTICAL CEILING TILE AND GRID SYSTEM. REFER TO FINISH LEGEND FOR SPECIFICATIONS.
 - 2' X 4' ACOUSTICAL CEILING TILE AND GRID SYSTEM. REFER TO FINISH LEGEND FOR SPECIFICATIONS.
 - INDICATES GYPSUM BOARD CEILING OR BULKHEADS (PAINTED FINISH, SEE FINISH LEGEND)
 - 2'X4 DIRECT/INDIRECT LED LIGHT FIXTURE
 - 2'X4 DIRECT/INDIRECT LED LIGHT FIXTURE SURFACE MOUNTED
 - 2'X4 EMERGENCY DIRECT/INDIRECT LED LIGHT FIXTURE
 - 2'X4 SURFACE MOUNTED PENDANT LIGHT FIXTURE
 - 2'X4 EMERGENCY SURFACE MOUNTED LED LIGHT FIXTURE
 - 2'X4 EDGE LIT PANELS
 - 6" RECESSED LED CAN LIGHT
 - 1 LIGHT ROYAL BRONZE MINI-PENDANT WITH CAGE DESIGN SHADE. MANUFACTURER: HOME DECORATORS COLLECTION. MODEL: H-83533-281 / 10015959148
 - CEILING MOUNTED EXAM LIGHT - #M 550 (WEIGHT OF UNIT = 53.8 LBS)
 - CEILING MOUNTED DUAL-HEAD SURGERY LIGHT - #M 1000 (WEIGHT OF UNIT = 291 LBS)
 - LED UNDERCABINET TAPE LIGHTING STRIP FOR SWITCHING. PROVIDE (1) WALL SWITCH AT END OF EACH RUN.
 - EXIT SIGNAGE
 - EMERGENCY EGRESS LIGHT
 - 2' VIA 2 LED PENDANT
 - CONTRACTOR TO COORDINATE ABOVE CEILING WORK BY ALL TRADES. REPLACE EXISTING CEILINGS IN THEIR ENTIRETY WITH NEW GYP. DO CEILING IF DEMAND MORE ECONOMICAL. OTHERWISE EXISTING CEILING TO REMAIN. CUT, PATCH & PAINT CEILING WHERE INDICATED.
 - INDICATE CHOICE WITH BID SUBMISSION.

REFLECTED CEILING NOTES

- A. INSTALL SUSPENSION SYSTEM IN ACCORDANCE WITH ASTM C428/C428M, ASTM C586/C586M, AND MANUFACTURER'S INSTRUCTIONS AND AS SUPPLEMENTED IN THE SPECIFICATIONS AND DRAWING DETAILS.
- B. DESIGN SUSPENDED CEILING FRAMING SYSTEMS TO RESIST A LATERAL FORCE OF 20% OF THE WEIGHT OF THE CEILING ASSEMBLY AND ANY LOADS TRIBUTARY TO THE SYSTEM. USE A MINIMUM CEILING WEIGHT OF 5 POUNDS PER SQUARE FOOT TO DETERMINE THE LATERAL FORCE.
- C. THE ARCHITECTURAL REFLECTED CEILING PLAN SHALL GOVERN THE LAYOUT OF ALL CEILING ELEMENTS AND/OR PENETRATIONS. UNLESS THERE IS AN ENLARGED CEILING PLAN WHICH THEREFORE THE ENLARGED PLAN WILL GOVERN THE LAYOUT. COORDINATE ANY FIELD VERIFIED OR AS-BUILT CONDITIONS THAT DIFFER FROM WHAT IS SHOWN ON THESE PLANS WITH THE ARCHITECT.
- D. SIZES AND SHAPES OF MECHANICAL, LIGHTING, AND MISC. ELECTRICAL EQUIPMENT (IF SHOWN ARE FOR REFERENCE ONLY. COORDINATE ACTUAL LIGHTING AND MISC. ELECTRICAL SIZES WITH MECHANICAL ENGINEER. COORDINATE ACTUAL LIGHTING AND MISC. ELECTRICAL SIZES WITH THE ELECTRICAL ENGINEER.
- E. FIRE AND SECURITY WORK SHOWN HERE FOR REFERENCE ONLY. REFER TO FIRE AND SECURITY VENDOR DRAWINGS FOR SECURITY AND FIRE PROTECTION WORK. WORK SHALL BE CONTRACTED DIRECTLY BY THE OWNER WITH THE VENDOR.
- F. REQUIREMENTS OF CONTRACTOR INSTALLED ELEMENTS FOR LOW VOLTAGE SYSTEM ARE SHOWN ON ELECTRICAL DRAWINGS. COORDINATE THE INFORMATION, DATA AND SECURITY SYSTEM INSTALLATION WITH OWNER.
- G. PROVIDE EXIT SIGN WITH 4" LETTERS AND REQUIRED HEIGHTS. WHEN SHOWN ON DRAWINGS, AND ADDITIONAL SIGNATURE REQUIRED BY BUILDING DEPARTMENT INSPECTOR OR FIRE DEPARTMENT FIRE INSPECTOR TO CONNECT ELECTRICAL TO EMERGENCY POWER CIRCUITS.
- H. PROVIDE SEPARATE LIGHT LIGHTS AND SWITCHES.
- I. SUSPENDED CEILING SHALL BE CENTERED IN BOTH DIRECTIONS OF EACH ROOM. CEILING PANELS SHALL BE THIN AND WIDE, UNLESS REFLECTED CEILING PLAN INDICATES OTHERWISE WITH SPECIFICATIONS.
- J. PROVIDE AND INSTALL SOUND BATT INSULATION OVER ENTIRE SUSPENDED CEILING IN EACH OF THE FOLLOWING ROOMS:
 - a. CAT & DOG HOLDING ROOMS
 - b. CAT & DOG HOLDING ROOMS
 - c. CAT & DOG HOLDING ROOMS
- K. GATE REGISTERS AND LIGHTING FIXTURES WITHIN GRID LINES. CENTER SPRINKLER HEADS, SPEAKERS, RECESSED FIXTURES, AND SIMILAR CEILING ELEMENTS IN ACOUSTICAL CEILING TILE, UNLESS NOTED OTHERWISE.
- L. FINISH HVAC DIFFUSERS, DRAPERY POCKETS, AND SPEAKER GRILLES TO MATCH ADJACENT FINISH, UNLESS OTHERWISE NOTED.
- M. ALL ELECTRICAL BOXES, SWITCH PLATES, ETC. SHALL BE INSTALLED PER LOCATIONS SHOWN ON SHEET AS 2 (STANDARD MOUNTING HEIGHTS).
- N. ANY NEW PIPING AND/OR OTHER MATERIAL THAT WILL BE INSTALLED IN OR ROUTE THROUGH THE CEILING SHALL BE PROTECTED WITH 1/2" THICK GYP. BOARD WITH ONE WRAPPED PROTECTED WITH A PLENUM RATED MATERIAL @ 1/4" FLAME SPREAD @ 25 OR LESS AND SMOKE DEVELOPMENT OF 50 OR LESS.
- O. CERTAIN ROOMS TO RECEIVE NEW OCCUPANCY SENSOR LIGHT SWITCHES, SEE ELECTRICAL PLANS FOR LOCATIONS.
- P. PROVIDE BLOCKING IN CEILING / BULKHEAD FOR SUPPORT OF EQUIPMENT.
- Q. (MECHANICAL NOTE)
 - ** ISOLATION ROOM TO RECEIVE NEGATIVE PRESSURE.
 - ** OR - SURGERY ROOM TO RECEIVE POSITIVE PRESSURE.

REFLECTED CEILING PLAN KEYNOTES

- 1 LIGHTS TO BE DIMMABLE
- 2 PROVIDE CEILING TILE CLIPS AT GRID.
- 3 EXISTING EXPOSED CEILING TO REMAIN

MD ARCHITECTS
547 HAYWOOD ROAD, SUITE 200
ASHEVILLE, NC 28809
Phone: 828.251.1111
www.mdarchitects.com

FAMILY VET GROUP

WEST ASHEVILLE FAMILY VET HOSPITAL

547 HAYWOOD ROAD
ASHEVILLE, NC 28809

REFLECTED CEILING PLAN

DATE	NO. REVISED	BY	REVISION	

A12.1

THESE DRAWINGS ARE OWNED BY MD ARCHITECTS AND SHALL BE KEPT IN CONFIDENTIALITY. NO PART OF THESE DRAWINGS SHALL BE REPRODUCED OR TRANSMITTED IN ANY FORM OR BY ANY MEANS, ELECTRONIC OR MECHANICAL, INCLUDING PHOTOCOPYING, RECORDING, OR BY ANY INFORMATION STORAGE AND RETRIEVAL SYSTEM, WITHOUT THE WRITTEN PERMISSION OF MD ARCHITECTS.