

STIPULATION FOR REUSE
THIS DRAWING WAS PREPARED FOR USE IN A SPECIFIC PROJECT AND IS NOT BE REUSED, REPRODUCED, COPIED, OR IN ANY MANNER BE MADE PUBLIC IN ANY MANNER WITHOUT THE WRITTEN CONSENT OF HARRISON FRENCH & ASSOCIATES, LTD. ANY REUSE OF THIS DRAWING WITHOUT THE WRITTEN CONSENT OF HARRISON FRENCH & ASSOCIATES, LTD. SHALL BE AT THE USER'S SOLE RISK AND WITHOUT LIABILITY TO HARRISON FRENCH & ASSOCIATES, LTD.

REMODEL
STORE NUMBER: 368
JOB NUMBER: 03-13-10368
JOB LOCATION: AL 36848

ISSUE BLOCK	NO.	DESCRIPTION	DATE

CHECKED BY: JKR
DRAWN BY: DNM
DOCUMENT DATE: 8/17/20



PLUMBING FIXTURE SCHEDULE											
MARK	FITTURE	WATER				WASTE		VENT	DESCRIPTION	NOTES	
		RUNOUT	CONN	RUNOUT	CONN	RUNOUT	CONN				
SK-1	HAND SINK	1/2"	1/2"	1/2"	1/2"	2"	2"	2"	HAND SINK BY OWNER. PLUMBING CONTRACTOR TO PROVIDE ASSE 1070 MIXING VALVE.	1. ADA ACCESSIBLE	
SK-2	SINK BY OWNER	1/2"	1/2"	1/2"	1/2"	(IND)	---	---	SINK AND FAUCET BY OWNER FOR INSTALLATION BY PLUMBING CONTRACTOR.	1	
SK-3	SINK BY OWNER	1/2"	1/2"	1/2"	1/2"	(IND)	---	---	SINK AND FAUCET BY OWNER FOR INSTALLATION BY PLUMBING CONTRACTOR.	1	

NOTES:
1. FIXTURE SHALL BE PROVIDED BY LOVES, CONTRACTOR INSTALLED. CONTRACTOR TO PROVIDE ALL ACCESSORIES THAT ARE REQUIRED FOR FULL INSTALLATION OF THESE PLUMBING FIXTURES (SUCH AS: INSULATION, ANGLE VALVES, P-TRAPS, ETC.)
2. CONTRACTOR SHALL PAINT THE HEAD AND NOZZLE ASSEMBLY YELLOW AND LABEL THE HYDRANT WITH A 12" YELLOW FIELD & 1-1/4" BLACK LETTERS WITH THE FOLLOWING PHRASE: "CAUTION: NONPOTABLE WATER, DO NOT DRINK."

SPECIALTY PLUMBING FIXTURE SCHEDULE				
MARK	FITTURE	MANUFACTURER	MODEL	DESCRIPTION
CO-1	EXTERIOR CLEANOUT	JAY R. SMITH	4250	HEAVY DUTY DURACOAT CAST IRON BODY WITH DOUBLE FLANGE HOUSING AND SCORIATED CAST IRON COVER WITH LIFTING DEVICE SECURED WITH COUNTERSUNK SCREWS.
CO-2	INTERIOR CLEANOUT	JAY R. SMITH	4422	LINE TYPE WITH LACQUERED CAST IRON BODY AND ROUND EPOXY COATED GASKETED COVER. AND ROUND STAINLESS STEEL ACCESS COVER SECURED WITH MACHINE SCREW.
CO-3	INTERIOR CLEANOUT	JAY R. SMITH	4141	LACQUERED CAST IRON BODY WITH ANCHOR FLANGE. REVERSIBLE CLAMPING COLLAR, THREADED TOP ASSEMBLY AND ROUND GASKETED COVER IN SERVICE AREAS AND ROUND GASKETED DEPRESSED COVER TO ACCEPT FLOOR FINISH IN FINISHED FLOOR AREA.
FD-2	FLOOR DRAIN	WATTS	FD12-R-6R-GNB	ASME A112.21.1M ON GRADE PVC TWO PIECE BODY WEEP HOLES, AND ROUND, ADJUSTABLE NICKEL-BRONZE STRAINER WITH ROUND FUNNEL, 3" OUTLET SIZE.
FD-3	FLOOR DRAIN	WATTS	FD12-R-6R-HNB	ASME A112.21.1M ON GRADE PVC TWO PIECE BODY WEEP HOLES, ADJUSTABLE 6" DIAMETER SATIN NICKEL BRONZE STRAINER WITH OVAL FUNNEL, AND 4" OUTLET SIZE.
FS-1	FLOOR SINK	WATTS	FS-740-1-150-FC	12"X12" SQUARE LACQUERED CAST IRON BODY WITH INTEGRAL SEEPAGE PAN, EPOXY COATED INTERIOR, 8" DEEP SUMP, ALUMINUM DOME STRAINER, CLAMP COLLAR, HALF GRATE, AND SATIN NICKEL-BRONZE STRAINER W / 4" OUTLET.
FS-2	FLOOR SINK	WATTS	FS-730-1-150-FC	12"X12" SQUARE LACQUERED CAST IRON BODY WITH INTEGRAL SEEPAGE PAN, EPOXY COATED INTERIOR, 8" DEEP SUMP, ALUMINUM DOME STRAINER, CLAMP COLLAR, HALF GRATE, AND SATIN NICKEL-BRONZE STRAINER W / 3" OUTLET.
RD-1	ROOF DRAIN	WATTS	RD-300	COATED CAST IRON BODY, BOTTOM OUTLET, NO-HUB ROOF DRAIN WITH CAST OR DUCTILE IRON DOME, MEMBRANE CLAMP, ADJUSTABLE EXTENSION (OR EXTENSION SIZED FOR ROOF INSULATION), SUMP RECEIVER AND UNDERDECK CLAMP.
RD-2	ROOF DRAIN	WATTS	RD-300-R	COATED CAST IRON BODY, BOTTOM OUTLET, NO-HUB ROOF DRAIN WITH CAST OR DUCTILE IRON DOME, MEMBRANE CLAMP, ADJUSTABLE EXTENSION (OR EXTENSION SIZED FOR ROOF INSULATION), SUMP RECEIVER AND UNDERDECK CLAMP.

NOTES:
1. NOT ALL FIXTURES LISTED MAY BE USED ON PLANS
2. ALL FLOOR DRAINS, FLOOR SINKS, AND ROOF DRAINS SHALL BE PROVIDED AND INSTALLED BY THE PLUMBING CONTRACTOR.
3. SEE SPECIFICATION SECTION SHEET M1.

GREASE INTERCEPTOR SCHEDULE					
ALL PRODUCTS ON THIS SCHEDULE ARE FURNISHED AND INSTALLED BY CONTRACTOR					
MARK	MANUFACTURER	MODEL	FLOW RATE (GPM)	GREASE CAPACITY	REMARKS
GT-1	GREAT BASIN	GB-2	35	142 LBS	POLYETHYLENE BELOW GRADE GREASE INTERCEPTOR. FIELD ADJUSTED RISER SYSTEM WITH BUILT-IN FLOW CONTROL. GREASE INTERCEPTOR SHALL BE RECESSED INTO THE FINISHED FLOOR. PROVIDE ALL REQUIRED STEEL SUPPORT FRAMING AND THE ROD SUPPORTS. VENT AS REQUIRED BY LOCAL AHPJ. INTERCEPTOR SHALL BE CERTIFIED TO ASME A112.14.3 (TYPE C) AND CSA B481.1.

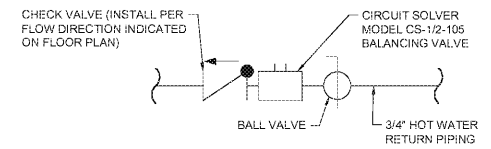
EVAPORATOR & CONDENSER UNIT SCHEDULE										
MARK	MANUFACTURER	MODEL	TYPE	PLUMBING			ELECTRICAL			WEIGHT
				WATER	WASTE	REMARKS	VOLTPH	MCA	CON	
EP-1	HEATCRAFT	LSF090BEQR06K	EVAPORATOR	---	IND	---	208/1	1	JB	48
EP-2	HEATCRAFT	LSC104AEQR06K	EVAPORATOR	---	IND	---	115/1	1.8	JB	49
CU-1	HEATCRAFT	CCH0030LCACZ0040	CONDENSER	---	---	---	208/3	15	DISC	230
CU-2	HEATCRAFT	CCH0015MCACZ0040	CONDENSER	---	---	---	208/3	15	DISC	221

WATER HAMMER ARRESTOR SIZING

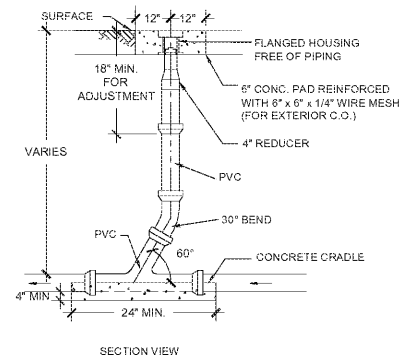
IF BRANCH IS GREATER THAN 20' LONG, PROVIDE ANOTHER WHA IN MIDDLE. EACH SIZED FOR HALF THE FIXTURE UNITS.
IF HORIZONTAL BRANCH IS LESS THAN 20' LONG, PROVIDE ONE WHA AT END OF LINE.

FIXTURE	CW FIXTURES UNITS	HW FIXTURE UNITS
VALVE WATER CLOSET	10	-
TANK WATER CLOSET	5	-
URINAL	5	-
LAVATORY/SINK	1.5	1.5
JANITOR SINK	3	3
SHOWER BATH TUB	2	2

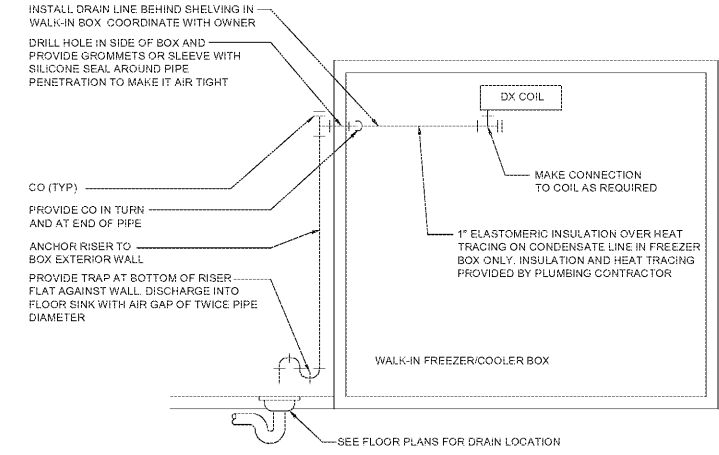
TAG	PDI SIZE	PIPE SIZE	MAX FIXTURE UNITS
WHA, SIZE "A"	A	1/2"	1 - 11
WHA, SIZE "B"	B	3/4"	12 - 32
WHA, SIZE "C"	C	1"	33 - 60
WHA, SIZE "D"	D	1 1/4"	61 - 113
WHA, SIZE "E"	E	1 1/2"	114 - 154
WHA, SIZE "F"	F	2"	154 - 330



3 HOT WATER BALANCING VALVE DETAIL
SCALE: N.T.S.



2 SANITARY SEWER CLEANOUT
SCALE: N.T.S.



1 FREEZER/COOLER CONDENSATE DETAIL
SCALE: N.T.S.

Aug 13, 2020, 10:05am - User: jathrida, Project: AL 36848, Job: 03-13-10368, Sheet: P3, 368.dwg