

SYMBOLS FOR FIELD VERIFY
FIELD VERIFY SHALL BE USED FOR ALL
DIMENSIONS, FINISHES, MATERIALS,
AND CONDITIONS. THE CONTRACTOR
SHALL VERIFY THE FIELD CONDITIONS
AND REPORT ANY DISCREPANCIES TO
THE ARCHITECT IMMEDIATELY.
FIELD VERIFY SHALL BE USED FOR ALL
DIMENSIONS, FINISHES, MATERIALS,
AND CONDITIONS. THE CONTRACTOR
SHALL VERIFY THE FIELD CONDITIONS
AND REPORT ANY DISCREPANCIES TO
THE ARCHITECT IMMEDIATELY.

REMODEL
STORE NUMBER: 368
300 ARBY DR
CLANTON, AL 35046
PROJECT NUMBER: 03-19-10868

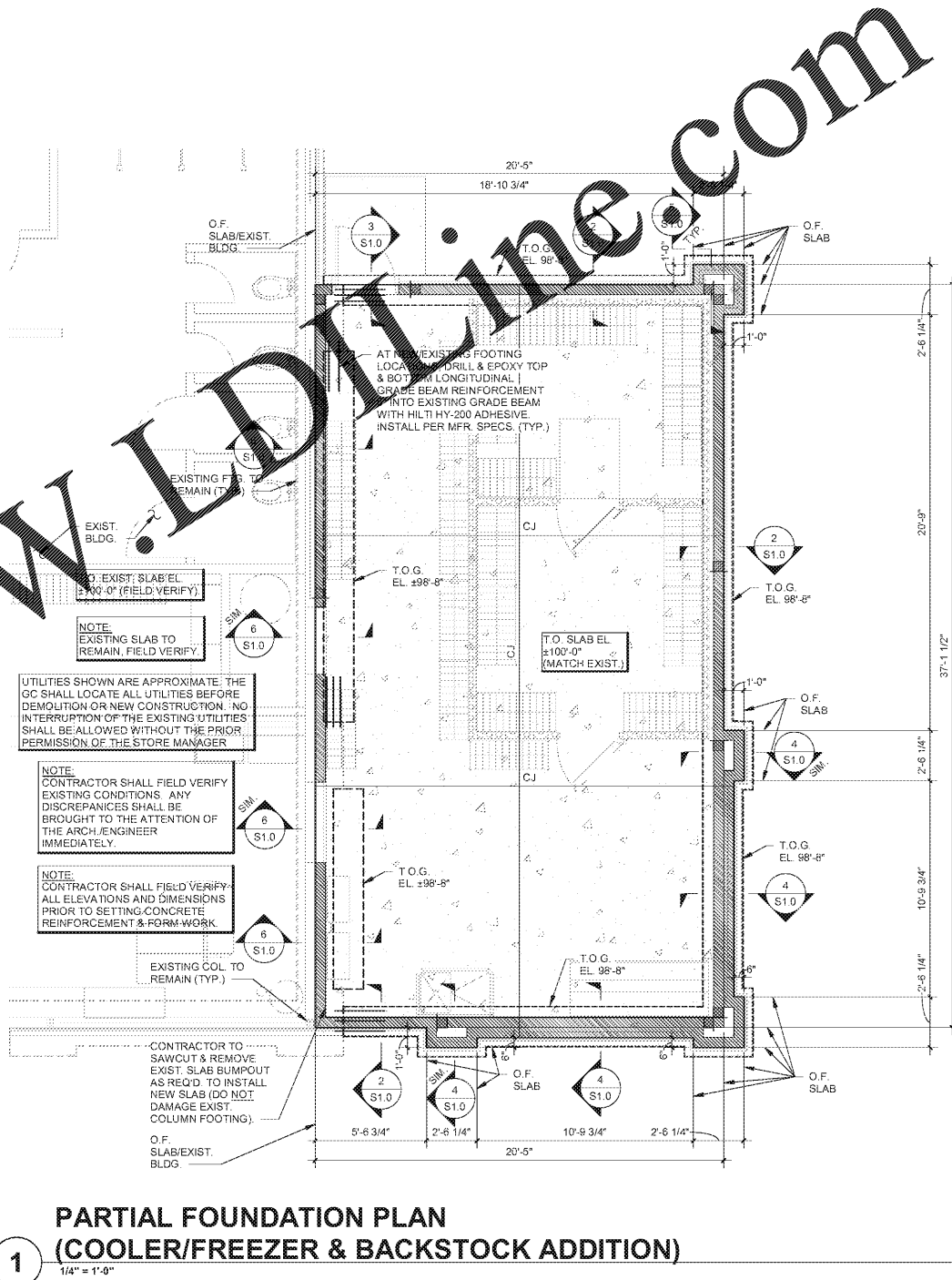
| ISSUE BLOCK | |
|-------------|--|
| | |
| | |
| | |
| | |
| | |
| | |
| | |
| | |
| | |

CHECKED BY: LST
DRAWN BY: JWK
DOCUMENT DATE: 08/17/20

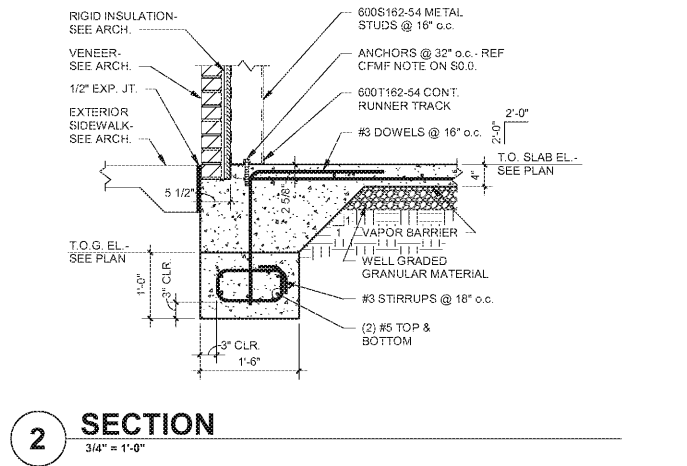
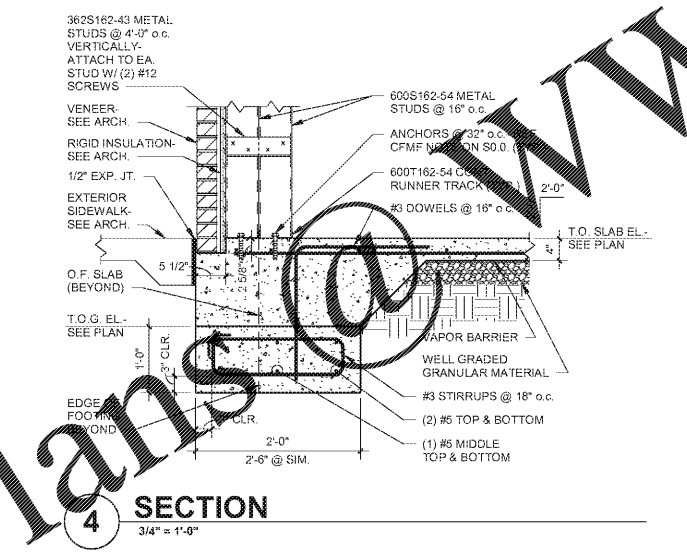
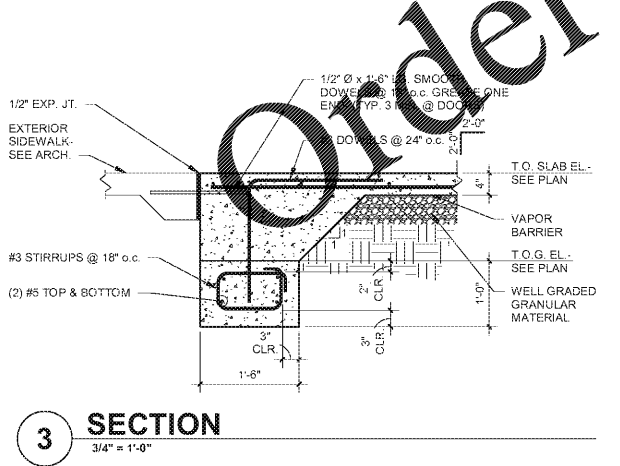
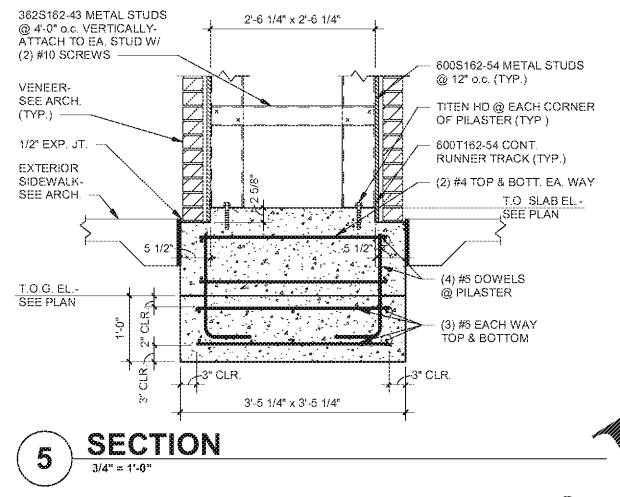
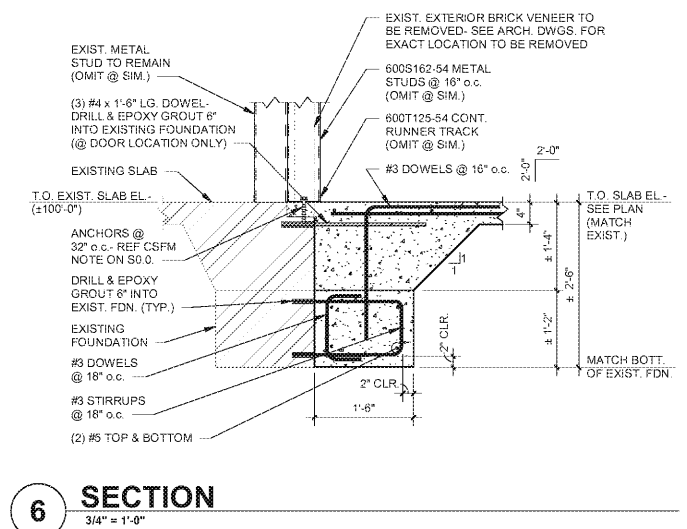


PARTIAL FOUNDATION PLAN & FOUNDATION DETAILS

SHEET: **S1.0**



- LEGEND:**
- O.F. DENOTES OUTSIDE FACE
 - T.O.G. DENOTES TOP OF GRADE BEAM ELEVATION
 - [Symbol] DENOTES (2) 600S162-54 MTL. STUDS W/ L6 x 4 x 3/8 x 1-4" LG. & (3) 3/4" Ø x 10" TITEN HD SCREW ANCHORS (REF: 10 / S2.0)
 - [Symbol] DENOTES EXTERIOR/INTERIOR LOAD-BEARING METAL STUD WALL
- PLAN NOTES:**
1. 4" SLAB-ON-GRADE CONSTRUCTION: 4" CONCRETE SLAB REINFORCED W/ #3 @ 18" EA. WAY AT MID-DEPTH ON STEGO 15 MIL CLASS A VAPOR BARRIER OVER 4" LAYER OF WELL GRADED GRANULAR MATERIAL.
 2. SEE DWG. S0.0 FOR GENERAL NOTES & TYPICAL DETAILS.
 3. SEE ARCH./PLUMBING DWGS. FOR EXACT LOCATIONS OF ALL FLOOR DRAINING & SLOPED SLABS.
 4. ALL ELEVATIONS BASED ON FINISH FLOOR EL. 100'-0". FIELD VERIFY ACTUAL FINISH FLOOR ELEVATION.
 5. ALL TOP OF GRADE BEAM ELEVATION IS 98'-8" (U.N.O.)
 6. "CJ" DENOTES CONTROL JOINT (REF. 1 / S0.0)
 7. SEE ARCH./CIVIL DWGS. FOR DIMENSIONS NOT SHOWN.
 8. COORDINATE DOOR LOCATIONS WITH ARCH. DWGS.
 9. COORDINATE LOCATIONS OF PLUMBING LINES W/ PLUMBER PRIOR TO POURING FOOTINGS & SLAB-ON-GRADE.



Order Plans @ WWW.IDLINE.com