

DOOR SCHEDULE

REF 1/A2.1 FOR DOOR TYPE

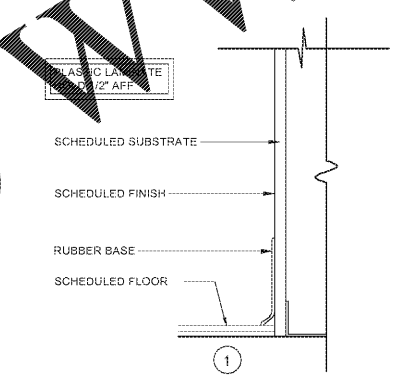
MARK	ROOM	DOOR TYPE	WIDTH	HEIGHT	DOOR MATERIAL	DOOR FINISH	FRAME MATERIAL	FRAME FINISH	GLAZING	HEAD	JAMB	THRESHOLD	REMARKS
127A	NEW PREP ROOM	B	3'-0"	7'-0"	HOLLOW METAL 16 GA. (INSULATED)	PAINT (NOTE 2)	METAL	PAINT (NOTE 2)	NONE	2/A6	3/A6	4/A6	2' HEAD, NOTES 4 & 7 PROVIDE PANIC HARDWARE

NOTES:

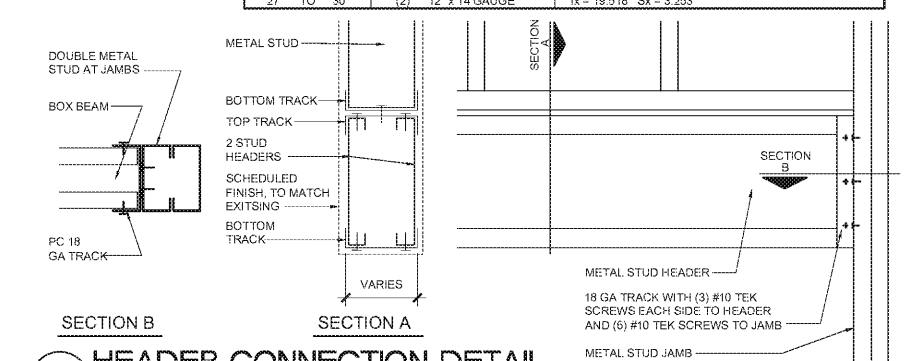
- "MARLITE" AAA BRONZE IN 400, 500, OR 600 SERIES AS REQUIRED. DOORS TO BE MORTISED FOR SPECIFIED HARDWARE. ROUGH OPENING + 1-1/2" WIDTH AND HEIGHT ABOVE SLAB.
- PAINT METAL DOORS AND METAL FRAMES TO MATCH ADJACENT WALL COLOR UNLESS OTHERWISE NOTED.
- FIELD CUT FRAME AND DOOR FOR MAGNETIC DOOR ALARM AND SWITCH.
- PROVIDE 1/4" CONTINUOUS METAL REINFORCEMENT AT HINGE SIDE OF DOOR. DRILL & TAP FOR CONTINUOUS HINGE.
- RUN WOOD GRAIN VERTICAL ON DOORS WITH FINISHES LM-2 AND LM-3.
- ELIASON EASY SWING IMPACT DOOR SCG-1 WITH WINDOW AND DOOR EDGE GASKET. - FRAME TO BE WITHOUT STOPS.
- PROVIDE METAL REINFORCEMENT AT HEAD OF FRAME. DRILL AND TAP FOR CLOSER ATTACHMENT.
- PROVIDE A.D.A. COMPLIANT WOMEN'S RESTROOM SIGNAGE CENTERED ON DOOR HORIZONTALLY AND MOUNTED AT +60" A.F.F. VERTICALLY. IN ADDITION, ADD SIGNAGE "WOMEN" IN MINIMUM 4. LETTERS BELOW. COORDINATE WITH OWNERS.
- ALUMINUM STOREFRONT DOORS SHALL BE A MEDIUM STYLE DESIGN.
- ALL SHOWER DOORS SHALL HAVE AN ELECTRIC STRIKE. ALL MARLITE DOOR FRAMES FOR SHOWER DOORS WILL COME FROM FACTORY WITH FRAME NOTCHED AT THE JAMB. G.C SHALL NOTCH THE 2X JAMB NAILER PER DETAIL 3/A2 & 8/A5. G.C SHALL NOTCH ALL DOOR FRAME, AND ALL DOOR HARDWARE (INCLUDING ELECTRIC STRIKE). ALL WIRING FOR ELECTRIC STRIKE TO BE PROVIDED BY OWNER (VIA GLP COMMUNICATIONS).

www.LDILine.com

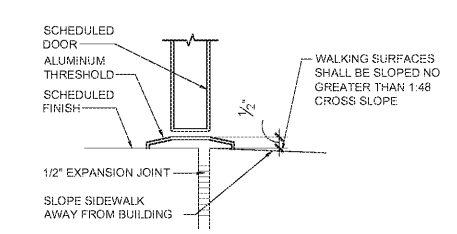
HEADER LENGTH	HEADER MEMBERS	MINIMUM EFFECTIVE PROPERTIES PER STUD
2' TO 6'	(2) 6" x 18 GAUGE	I _x = 2.042 S _x = 0.670
6' TO 8'	(2) 6" x 16 GAUGE	I _x = 2.518 S _x = 0.839
8' TO 10'	(2) 6" x 14 GAUGE	I _x = 3.094 S _x = 1.031
10' TO 12'	(2) 8" x 18 GAUGE	I _x = 4.134 S _x = 1.033
12' TO 14'	(2) 8" x 16 GAUGE	I _x = 5.110 S _x = 1.277
14' TO 16'	(2) 8" x 14 GAUGE	I _x = 6.303 S _x = 1.576
16' TO 18'	(2) 10" x 14 GAUGE	I _x = 12.325 S _x = 2.456
18' TO 26'	(2) 12" x 16 GAUGE	I _x = 15.730 S _x = 2.334
27' TO 30'	(2) 12" x 14 GAUGE	I _x = 19.518 S _x = 3.293



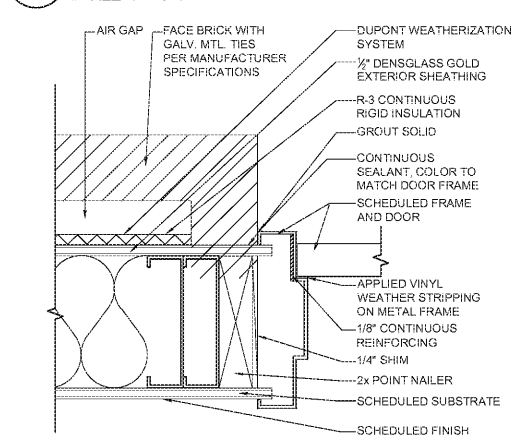
6 BASE DETAIL
SCALE: 3" = 1'-0"



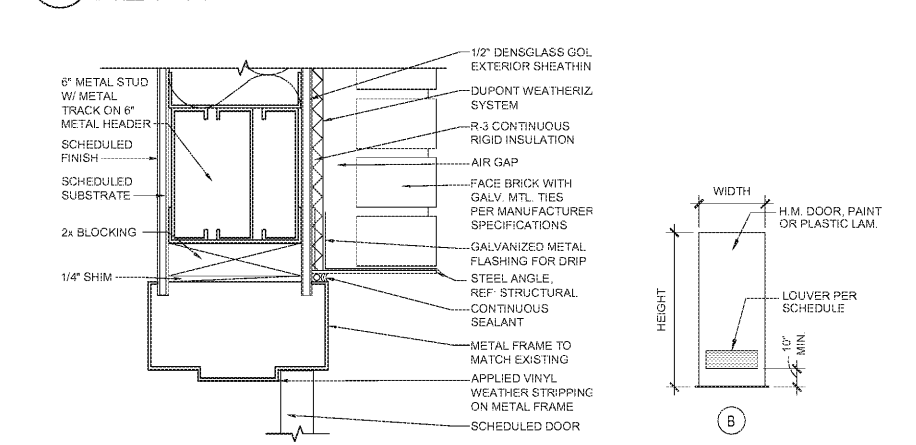
5 HEADER CONNECTION DETAIL
SCALE: 3" = 1'-0"



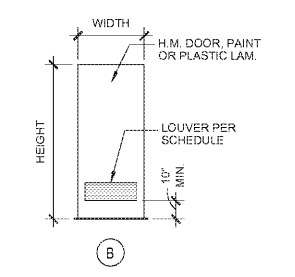
4 THRESHOLD DETAIL
SCALE: 3" = 1'-0"



3 JAMB DETAIL
SCALE: 3" = 1'-0"



2 HEAD DETAIL
SCALE: 3" = 1'-0"



1 DOOR ELEVATIONS
SCALE: 1/4" = 1'-0"

Order Plans @

August 2020, 09:05am - User: jsmith@lady.com - C:\Users\jsmith\Documents\180_A6_DOOR SCHEDULES, ELEVATIONS, & DETAILS.dwg

HFA
HARRISON FRENCH & ASSOCIATES, LTD.
1705 S. Walton Blvd, Suite 3
Bentonville, Arkansas 72712
+479.273.7780
f.888.520.9685
www.hfa-ae.com

STIPULATION FOR REUSE:
THIS DRAWING WAS PREPARED FOR USE ON A SPECIFIC SITE BY A CONTRACTOR. IT IS NOT TO BE REPRODUCED OR TRANSMITTED IN ANY FORM OR BY ANY MEANS, ELECTRONIC OR MECHANICAL, INCLUDING PHOTOCOPYING, RECORDING, OR BY ANY INFORMATION STORAGE AND RETRIEVAL SYSTEM, WITHOUT THE WRITTEN PERMISSION OF THE ARCHITECT. ANY REPRODUCTION OF THIS DRAWING FOR OTHER THAN THE ORIGINAL CONTRACTOR SHALL BE AT THE USER'S RISK AND WITHOUT LIABILITY TO THE ARCHITECT.

REMODEL
JOB NUMBER: 03-18-10263
STORE NUMBER: 368
JOB BY DR: CLAYTON, AL 35946

NO.	DATE	DESCRIPTION

CHECKED BY: RAF
DRAWN BY: JTH
DOCUMENT DATE: 8/17/20



Date: 2020.08.18 14:20:34-05'00'

DOOR SCHEDULES, ELEVATIONS, & DETAILS
SHEET: **A6**