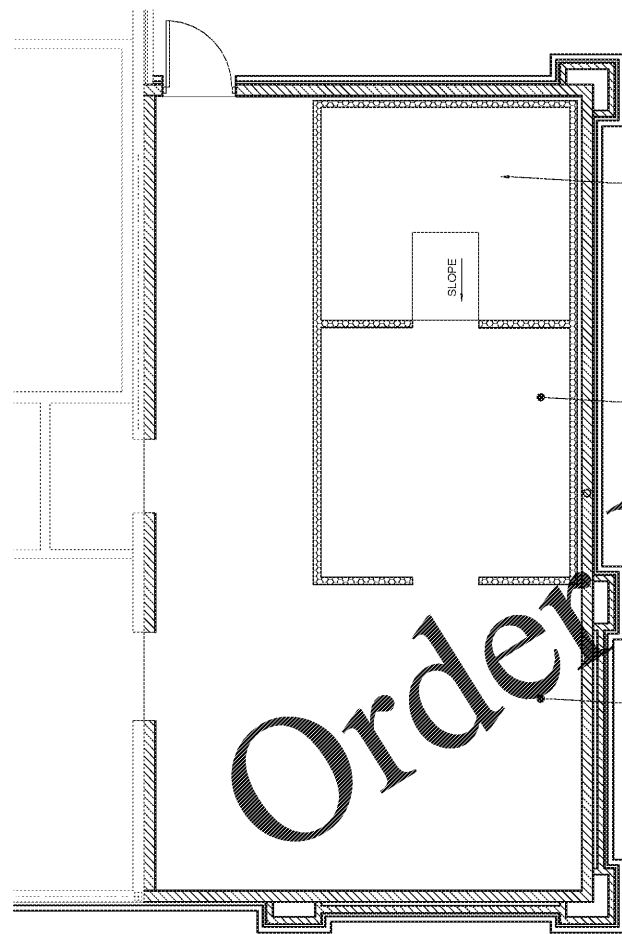
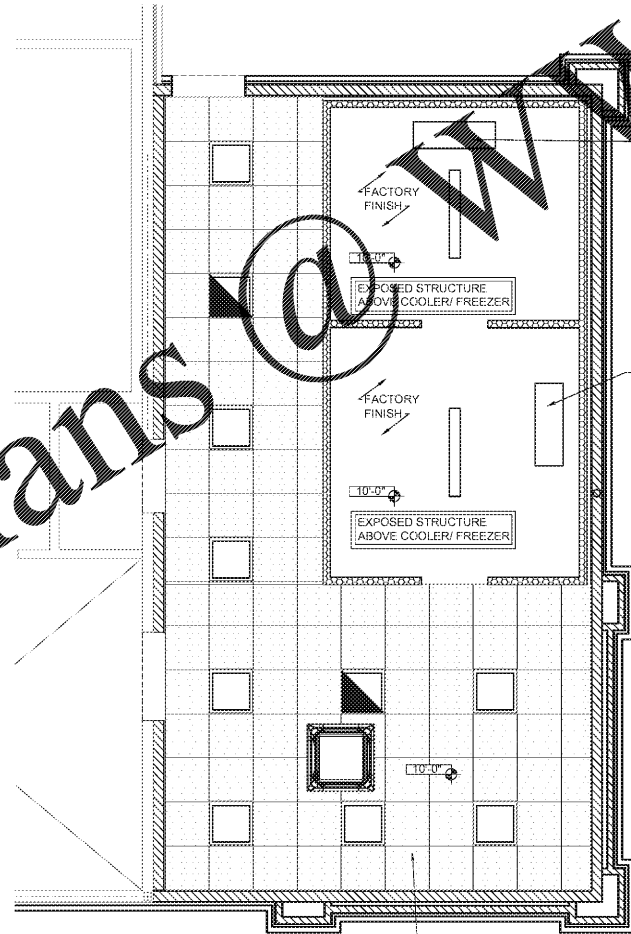


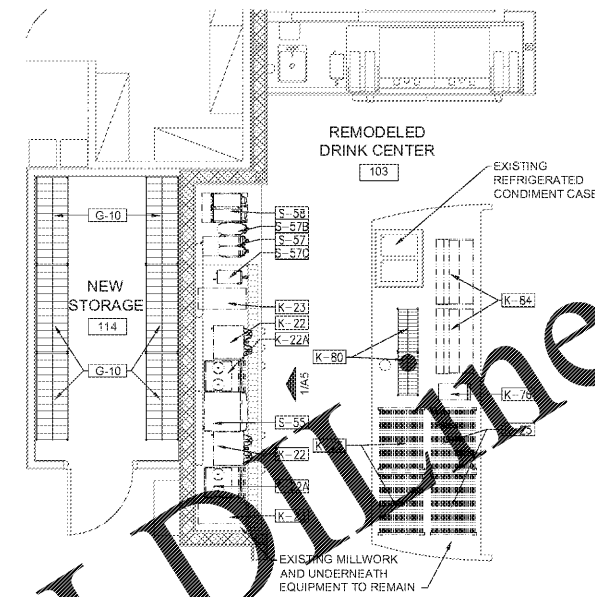
AUG 18, 2020 9:08am - User: jsmith by: hwy
 M:\0303-19-10363-Clanton, AL 36801\CAD\Civil\Architectural\131_A1.1 - ENLARGED FLOOR PLANS.dwg



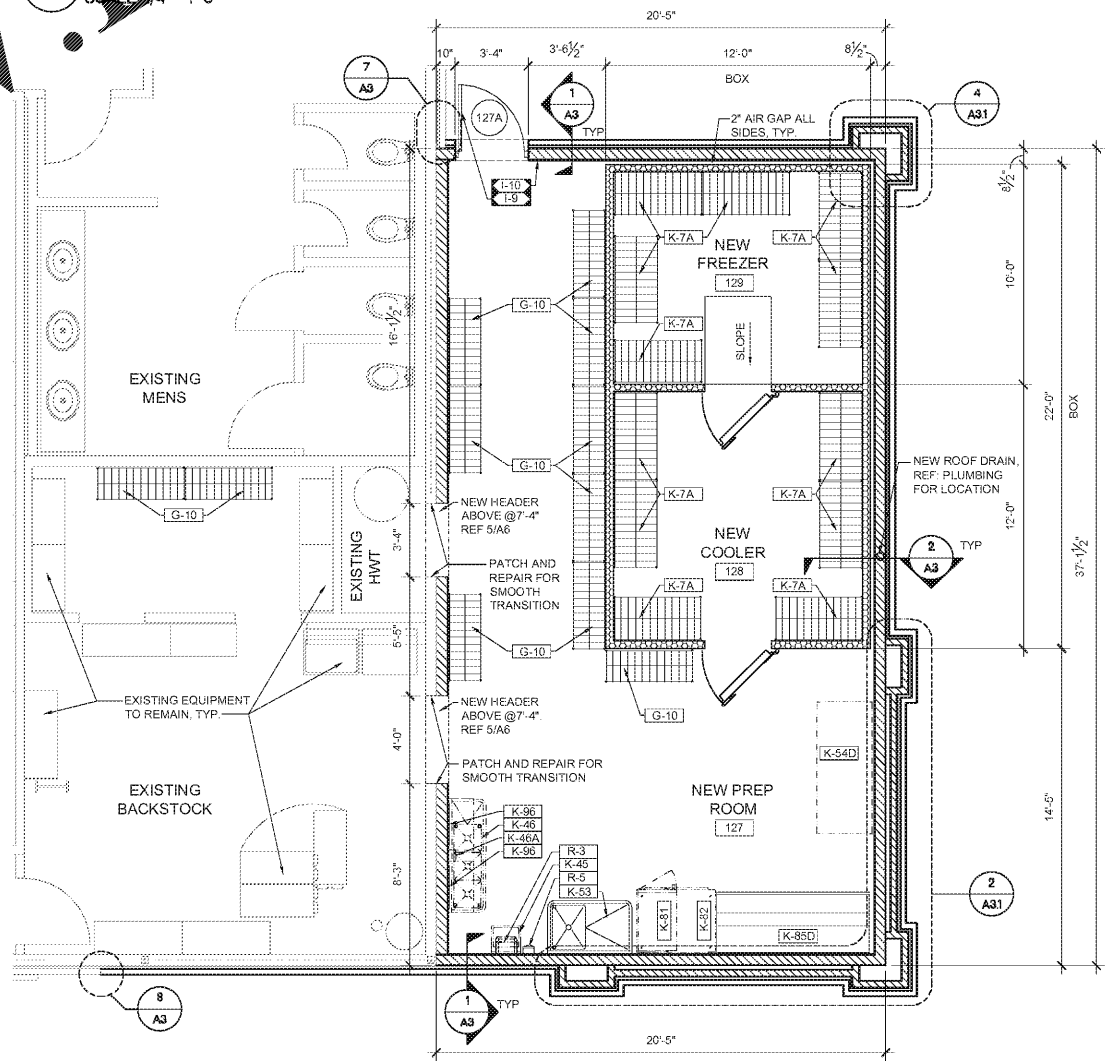
3 ENLARGED FLOOR FINISH PLAN
SCALE: 1/4" = 1'-0"



2 ENLARGED REFLECTED CEILING PLAN
SCALE: 1/4" = 1'-0"



4 ENLARGED EQUIPMENT PLAN
SCALE: 1/4" = 1'-0"



1 ENLARGED FLOOR PLAN
SCALE: 1/4" = 1'-0"

PLAN LEGEND

- EXISTING TO REMAIN
- EXISTING SHEAR WALL
- EXISTING 2HR FIRE RATED WALL
- NEW EQUIPMENT/FINISHES
- RELOCATED EQUIPMENT
- NEW STUD WALL PER WALL TYPE
- NEW FREEZER/COOLER PANELS AS NOTED

LIGHTING AND MECHANICAL LEGEND

- NEW 2 X 2 LED RECESSED FIXTURE, REF. ELECTRICAL
- NEW 2 X 2 LED RECESSED EMERGENCY FIXTURE, REF. ELECTRICAL
- NEW 4 LED STRIP LIGHT, REF. ELECTRICAL
- NEW CASSETTE, REF. MECHANICAL

HFA
HARRISON FRENCH & ASSOCIATES, LTD.
1705 S. Walton Blvd, Suite 3
Bentonville, Arkansas 72712
479.213.7780
888.520.0685
www.hfa-ae.com

STIPULATION FOR REUSE
THIS DRAWING IS PREPARED FOR USE ON A SPECIFIC SITE AT A PARTICULAR DATE ON THE BASIS OF THE INFORMATION PROVIDED TO THE ARCHITECT BY THE CLIENT. ANY REUSE OF THIS DRAWING FOR ANY OTHER PROJECT OR AT ANY OTHER DATE WITHOUT THE WRITTEN CONSENT OF HARRISON FRENCH & ASSOCIATES, LTD. IS STRICTLY PROHIBITED. THE ARCHITECT ASSUMES NO LIABILITY FOR ANY ERRORS OR OMISSIONS IN THIS DRAWING. THE ARCHITECT'S LIABILITY IS LIMITED TO THE PROFESSIONAL SERVICES PROVIDED BY THE ARCHITECT. THE ARCHITECT'S LIABILITY DOES NOT EXTEND TO THE DESIGN OR CONSTRUCTION OF THE PROJECT OR TO THE PERFORMANCE OF THE PROJECT. THE ARCHITECT'S LIABILITY IS LIMITED TO THE PROFESSIONAL SERVICES PROVIDED BY THE ARCHITECT.

REMODEL

STORE NUMBER: 368
JOB NUMBER: 03-19-10363

ISSUE BLOCK

NO.	DATE	DESCRIPTION

CHECKED BY: RAF
DRAWN BY: JTH
DOCUMENT DATE: 8/17/20



Date: 2020.08.18 14:18:00-0500'

ENLARGED PLANS

SHEET: **A1.1**