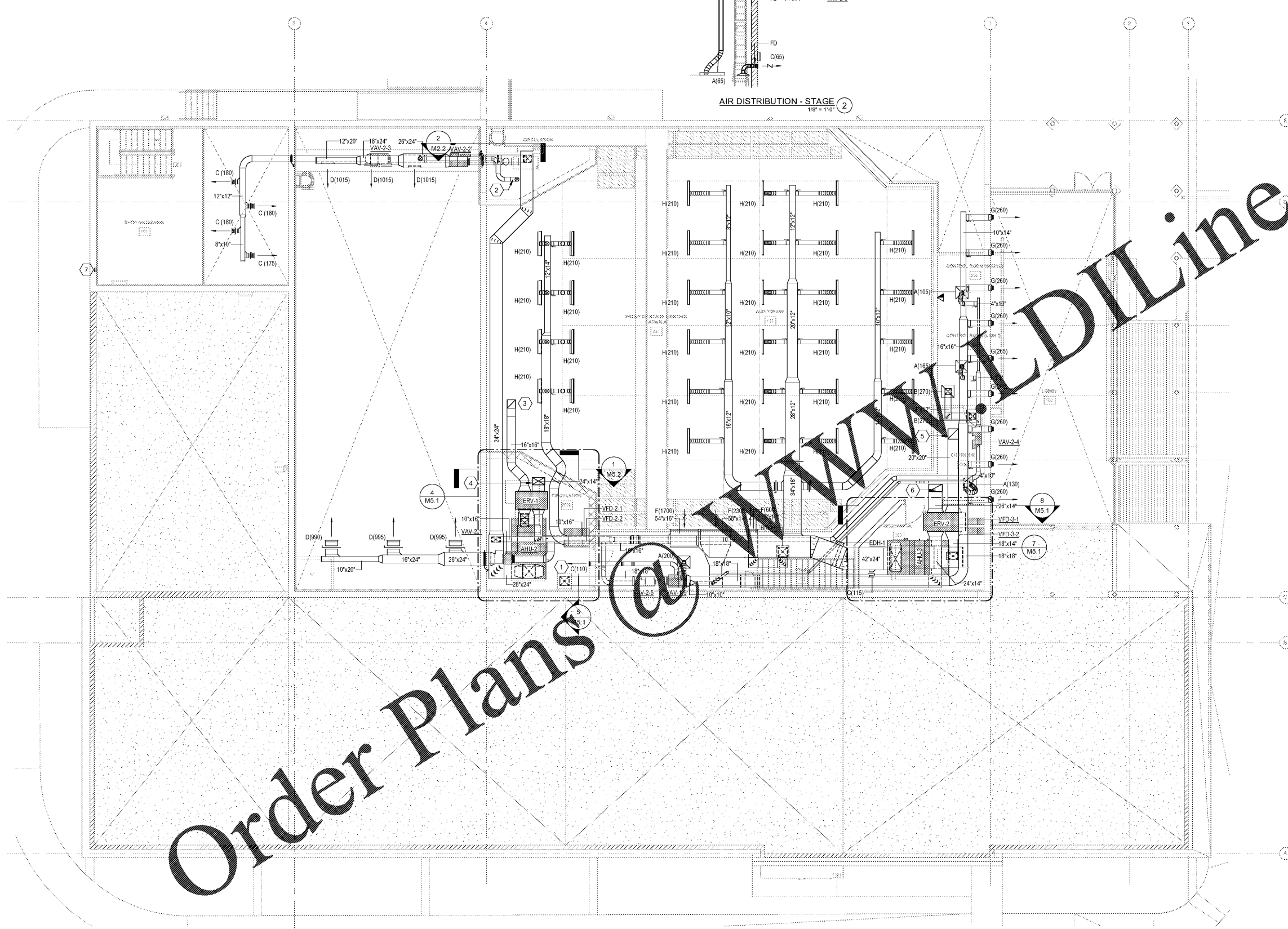


AIR DISTRIBUTION - STAGE 2  
1/8" = 1'-0"



Order Plans @ [www.WLDLine.com](http://www.WLDLine.com)

- ### GENERAL NOTES
- A. ALL RETURN GRILLS SHALL BE FILTERED UNTIL TEST AND BALANCE IS DONE.
  - B. PROVIDE VOLUME DAMPERS AT ALL BRANCH TAKE OFFS SERVING SINGLE DIFFUSER, GRILLE, OR REGISTER.
  - C. PROVIDE TURNING VANES IN ALL RECTANGULAR ELBOWS.
  - D. MAINTAIN MINIMUM 6" CLEARANCE BETWEEN DUCTWORK AND RATED WALLS.
  - E. COORDINATE DUCTWORK WITH STRUCTURE. PREPARE COORDINATION DRAWINGS AS SPECIFIED.
  - F. PROVIDE ALL CODE REQUIRED AND MANUFACTURER RECOMMENDED CLEARANCES FOR ALL EQUIPMENT.
  - G. FIRST TWENTY FEET OF SUPPLY AND RETURN DUCT ON AIR HANDLER 2 AND 3 SHALL BE DOUBLE WALL WITH INTERIOR METAL LINER (MCGILL AIRFLOW CORP. RECTANGULAR-K27).
  - H. PROVIDE REMOTE OPERATED DAMPER WHERE MANUAL BALANCING DAMPER IS CONCEALED ABOVE A SHEET ROCK OR GYPSUM BOARD CEILING OR IN OTHER INACCESSIBLE LOCATIONS. DAMPER CONTROL SHALL TERMINATE AT WALL, CEILING OR IN DIFFUSER AS SPECIFIED ON PLANS. REFER TO ARCHITECTURAL REFLECTIVE CEILING PLANS.

www.WLDLine.com

### KEYNOTES

| NUMBER | NOTES   |
|--------|---|
| 1      | 24" x 28" SUPPLY DUCT UP FROM AHU-1 ON FIRST FLOOR.   |
| 2      | DOWN TO STAGE ACCESS 100E.  |
| 3      | UP TO EF-2.1.   |
| 4      | DOWN FROM GVI-2.1.  |
| 5      | UP TO EF-3.1.   |
| 6      | DOWN FROM GVI-3.1.  |
| 7      | PROVIDE DRYER VENT SEIHO MODEL SFB. CAP OPENING. INSTALL PER MANUFACTURER'S RECOMMENDATION. |

**VOLT AIR**  
 THESE PLANS HAVE BEEN ELECTRONICALLY CHECKED BY: DANNY A. CELIS, P.E.  
 6005 Benjamin Road, Suite A  
 Tampa, Florida 33634  
 Tel: 888.881.9713  
 www.voltair.com  
 COA: #27156 Project #0118040  
 Engineer of Record:  
 DANNY CELIS, P.E. #0642

**FLEISCHMANGARCIA**  
 ARCHITECTS  
 3501 HOBBS AVENUE, SUITE 300  
 TAMPA, FLORIDA 33610  
 PHONE: (813) 251-1884  
 FAX: (813) 251-1884  
 www.fleischmangarcia.com

**HILLSBOROUGH COUNTY  
 NEW TAMPA PERFORMING ARTS  
 CENTER**  
 8550 HUNTERS VILLAGE RD.  
 TAMPA FL, 33647

THIS DESIGN AND DRAWING IS THE SOLE PROPERTY OF FLEISCHMANGARCIA. NO PART OF THIS WORK MAY BE REPRODUCED WITHOUT PRIOR WRITTEN PERMISSION FROM FLEISCHMANGARCIA.

PERMIT SET  
 05/06/2020

FGA PROJECT NUMBER  
 19048

ISSUE DATE  
 04-15-2020

| REVISIONS |       |
|-----------|-------|
| NO.       | NOTES |
|           |       |
|           |       |
|           |       |

SHEET NAME  
 SECOND FLOOR PLAN - HVAC

SHEET NUMBER  
 M2.2

SECOND FLOOR PLAN - HVAC 1  
 1/8" = 1'-0"