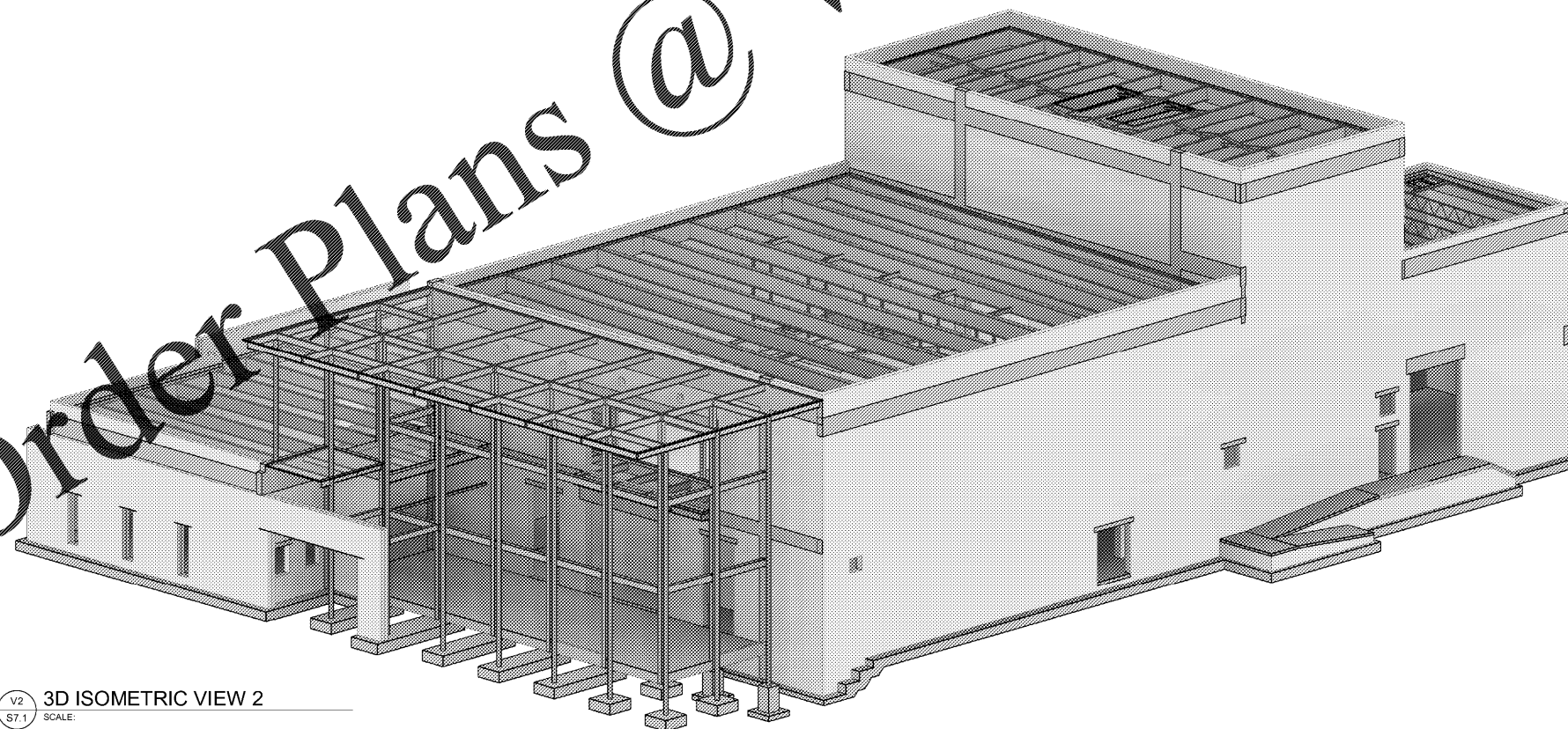


V1  
S7.1 3D ISOMETRIC VIEW 1  
SCALE:



V2  
S7.1 3D ISOMETRIC VIEW 2  
SCALE:

Order Plans @ [www.JDOnline.com](http://www.JDOnline.com)

MASTER ENGINEERS, INC.  
CONSULTING ENGINEERS, INC.  
5523 WEST CYPRESS ST. STE 200  
TAMPA, FLORIDA 33607-1735  
P: 813.287.3600 F: 813.287.3622  
THE SOLE PROPERTY OF MASTER ENGINEERS, INC.  
THIS DRAWING IS NOT TO BE REPRODUCED OR  
TRANSMITTED IN ANY FORM OR BY ANY MEANS,  
ELECTRONIC OR MECHANICAL, INCLUDING  
PHOTOCOPYING, RECORDING, OR BY ANY  
INFORMATION STORAGE AND RETRIEVAL SYSTEM,  
WITHOUT THE WRITTEN PERMISSION OF  
MASTER ENGINEERS, INC.  
CA. 049 PROJ. NO. 1106-001

RYAN A. BECKLEY, P.E.  
FL. LIC. No. 83337

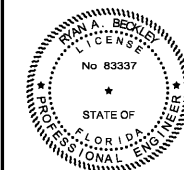
REGISTERED PROFESSIONAL ARCHITECT  
FLEISCHMAN MANGARCIA  
ARCHITECTURE: PLANNING: INTERIORS  
304 HYDE PARK AVENUE, SUITE 300  
TAMPA, FLORIDA 33606  
PHONE (813) 752-8800  
FAX (813) 281-1884  
WWW.FLEISCHMANMANGARCIA.COM

HILLSBOROUGH COUNTY  
NEW TAMPA PERFORMING ARTS  
CENTER  
8550 HUNTERS VILLAGE RD.  
TAMPA FL 33647

THIS DESIGN AND DRAWING IS THE SOLE  
PROPERTY OF FLEISCHMAN-MANGARCIA. NO  
PART OF THIS WORK MAY BE REPRODUCED  
WITHOUT PRIOR WRITTEN PERMISSION  
FROM FLEISCHMAN-MANGARCIA.

I CERTIFY TO THE BEST OF MY  
KNOWLEDGE THAT THESE DRAWINGS  
COMPLY WITH ALL RELEVANT BUILDING  
CODES.

PERMIT SET



FGA PROJECT NUMBER  
19048

ISSUE DATE  
04-15-2020

NO.	DATE	NOTES

SHEET NAME  
3D ISOMETRIC  
VIEWS

SHEET NUMBER  
S7.1

THIS ITEM HAS BEEN DIGITALLY SIGNED AND SEALED BY RYAN BECKLEY, P.E. ON 04/15/2020 USING A DIGITAL SIGNATURE. PRINTED COPIES OF THIS DOCUMENT ARE NOT CONSIDERED SIGNED AND SEALED AND THE SHA AUTHENTICATION CODE MUST BE VERIFIED ON ANY ELECTRONIC COPIES.

TO THE BEST OF OUR KNOWLEDGE INFORMATION AND BELIEF, THESE STRUCTURAL PLANS CONFORM TO AND SATISFY, THE FLORIDA BUILDING CODE, SIXTH EDITION 2017, ACI 318-14 AND LOCAL CODES AS APPLICABLE