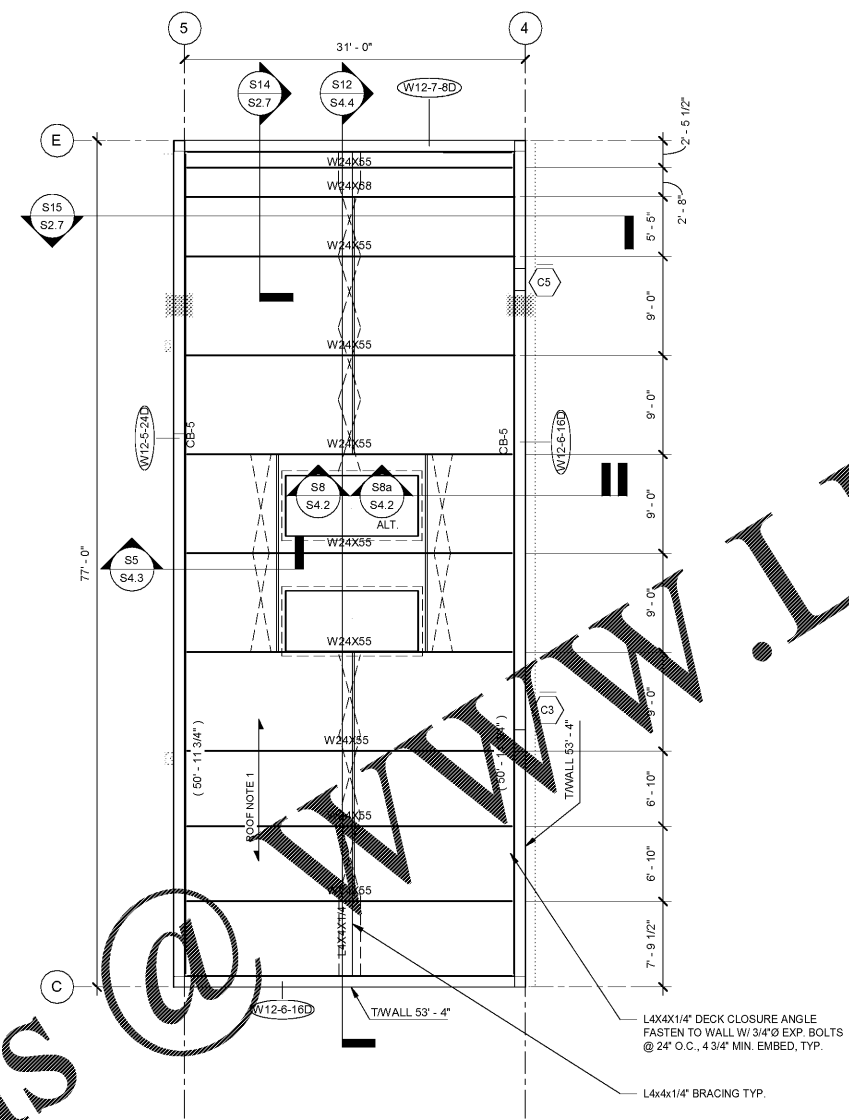


Order Plans @ WWW.LDILine.com



1 THEATER HIGH ROOF FRAMING PLAN  
S2.5 SCALE: 1/8" = 1'-0"

**ROOF FRAMING NOTES:**

- ROOF FRAMING SHALL BE 3" - 20 GAGE TYPE "NA" ACOUSTICAL\* METAL DECK SPANNING OVER OPEN WEB STEEL JOIST SPACED @ 10'-0" O.C. (U.N.O.).
- DIRECTION OF METAL DECK SPAN SHOWN THUS  $\leftarrow$  ON PLAN.
- FOR ROOF DRAIN LOCATIONS AND SIZE SEE ARCHITECTURAL DRAWINGS. FOR FRAMING SEE TYPICAL DETAIL 5-302/S3.6.
- FOR TYPICAL DETAILS AND GENERAL NOTES SEE DRAWING S3.1 THRU S3.6 & S1.1.
- ( ) DENOTES UNDERSIDE OF METAL DECK (U.M.D.) ELEVATION.
- JOIST MANUFACTURER TO DESIGN JOIST FOR THE UPLIFT FORCE SHOWN ON THE LOADING SCHEDULE AND PROVIDE CERTIFICATION THAT CHORD MEMBERS HAVE BEEN INVESTIGATED FOR REVERSE STRESSES DUE TO ALL UPLIFT FORCES. ADDITIONAL BRIDGING SHALL BE PROVIDED AT THE FIRST INTERIOR BOTTOM CHORD PANEL POINT OF ALL JOISTS SUBJECT TO NET UPLIFT PER STEEL JOIST INSTITUTE.
- FRAME ALL JOIST BOTTOM CHORD MEMBERS TO BEAM BOTTOM FLANGES. INSTALLATION TO BE DONE AFTER ALL DEAD LOADS ARE APPLIED.
- RAIN LEADER SHOWN THUS  $\leftarrow$  ON PLAN. SEE PLUMBING DRAWINGS FOR SIZE AND LOCATIONS.
- FOR PLAN DIMENSIONS NOT SHOWN SEE ARCHITECTURAL DRAWINGS.
- ( ) DENOTES FINISH FLOOR.
- PROVIDE MOMENT CONNECTIONS AT BEAMS SHOWN THUS  $\leftarrow$  ON PLAN.
- COLUMN DESIGNATIONS SHOWN THUS  $\odot$  ON PLAN. FOR COLUMN SCHEDULE, SEE DRAWING S6.1.
- ( ) DENOTES COLUMN STOP AT THIS LEVEL.
- FOR LOAD SCHEDULE & WIND DESIGN DATA, SEE DRAWING S1.2.
- FOR CHAMFER OF EXPOSED CORNERS OF BEAMS AND/OR COLUMNS, SEE ARCHITECTURAL DRAWINGS.

**CONCRETE BEAM SCHEDULE**

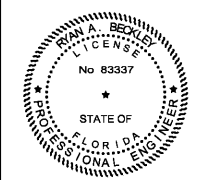
MARK	BEAM WIDTH	BEAM DEPTH	CONT. REINFORCING	TIE REINFORCING	REMARKS
CB-1	8"	24"	(2)-#5 T&B CONT.	#3 @ 12" O.C.	
CB-2	8"	32"	(2)-#5 T&B CONT.	#3 @ 8" O.C.	
CB-3	8"	36"	(2)-#5 T&B CONT.	#3 @ 8" O.C.	
CB-4	12"	24"	(2)-#5 T&B CONT.	#3 @ 12" O.C.	
CB-5	12"	32"	(2)-#6 T&B CONT.	#3 @ 12" O.C.	
CB-6	12"	40"	(4)-#6 T&B CONT.	#3 @ 12" O.C.	PLACE CONT. REINF. IN TWO LAYERS T&B
CB-7	12"	51"	(2)-#6 T&B CONT.	#3 @ 12" O.C.	PROVIDE #5@9" O.C. LONGIT. EA. FACE
CB-8	8"	66"	(2)-#6 T&B CONT.	#3 @ 12" O.C.	PROVIDE #5@9" O.C. LONGIT. EA. FACE
CB-9	8"	10"	(2)-#5 T&B CONT.	#3 @ 8" O.C.	

THIS ITEM HAS BEEN DIGITALLY SIGNED AND SEALED BY RYAN BECKLEY, P.E. ON 04/15/2020 USING A DIGITAL SIGNATURE. PRINTED COPIES OF THIS DOCUMENT ARE NOT CONSIDERED SIGNED AND SEALED AND THE SHA AUTHENTICATION CODE MUST BE VERIFIED ON ANY ELECTRONIC COPIES.

THIS DESIGN AND DRAWING IS THE SOLE PROPERTY OF FLEISCHMANGARCIA. NO PART OF THIS WORK MAY BE REPRODUCED WITHOUT PRIOR WRITTEN PERMISSION FROM FLEISCHMANGARCIA.

I CERTIFY TO THE BEST OF MY KNOWLEDGE THAT THESE DRAWINGS COMPLY WITH ALL RELEVANT BUILDING CODES.

PERMIT SET



FGA PROJECT NUMBER  
19048

ISSUE DATE  
04-15-2020

NO.	DATE	NOTES

SHEET NAME  
THEATER HIGH ROOF FRAMING PLAN

SHEET NUMBER  
S2.5

TO THE BEST OF OUR KNOWLEDGE INFORMATION AND BELIEF, THESE STRUCTURAL PLANS CONFORM TO AND SATISFY, THE FLORIDA BUILDING CODE, SIXTH EDITION 2017, ACI 318-14 AND LOCAL CODES AS APPLICABLE.

MASTER CONSULTING ENGINEERS, INC.  
5523 WEST CYPRESS ST. STE 200  
TAMPA, FLORIDA 33607-1735  
P: 813.287.3600 F: 813.287.3622  
FLORIDA PROFESSIONAL ENGINEER LICENSE NO. 12518  
REGISTERED PROFESSIONAL ENGINEER  
CA. REG. PROJ. NO. 1136-001

ARCHITECTURE: PLANNING: INTERIORS  
FLEISCHMANGARCIA  
324 HYDE PARK AVENUE, SUITE 300  
TAMPA, FLORIDA 33606  
PHONE: (813) 287-4400  
FAX: (813) 287-1884  
REGISTRATION NUMBER: BA030330  
WWW.FLEISCHMANGARCIA.COM

HILLSBOROUGH COUNTY  
NEW TAMPA PERFORMING ARTS CENTER  
8550 HUNTERS VILLAGE RD.  
TAMPA FL, 33647