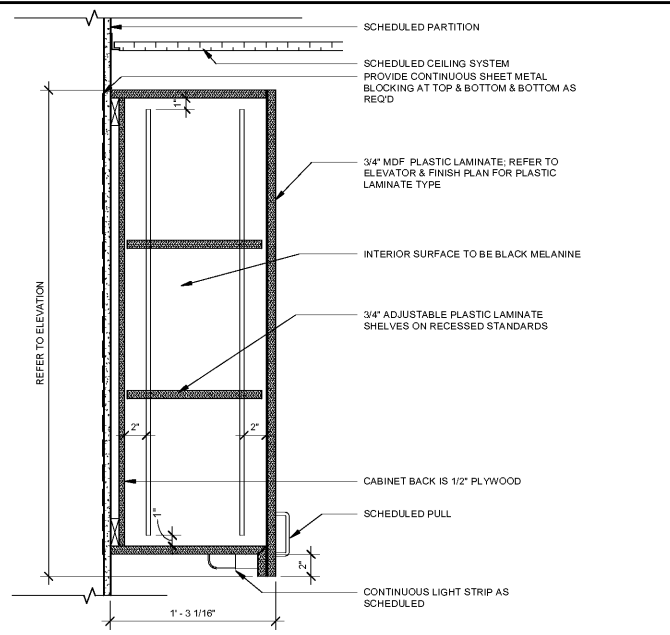
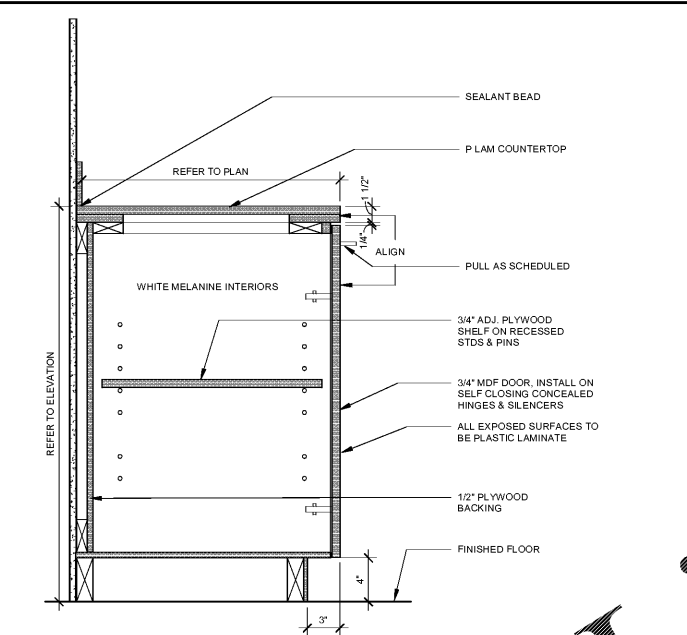


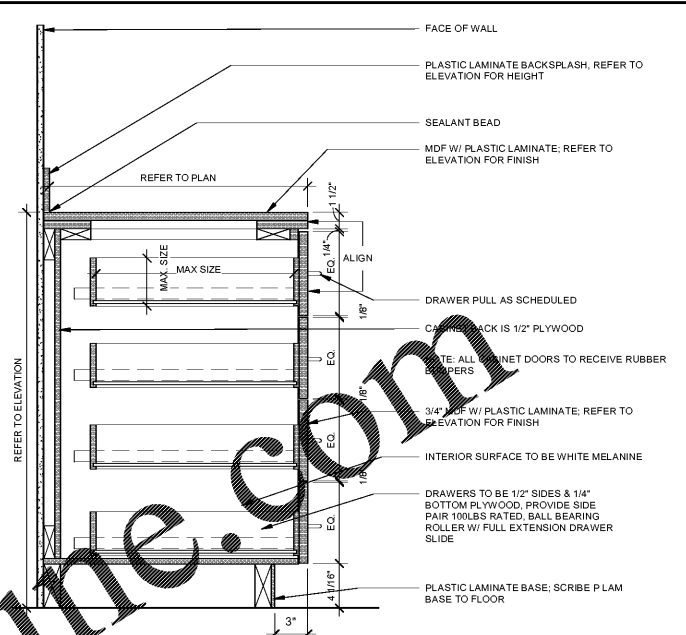
SECTION AT COUNTER
1/2" = 1'-0"



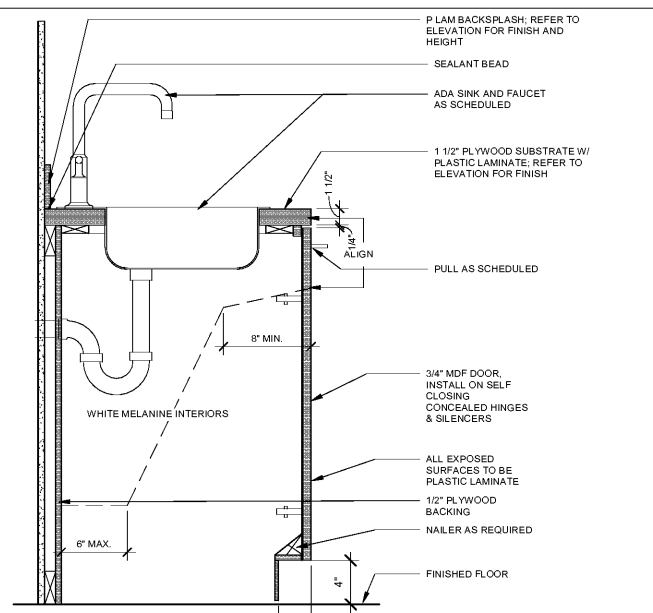
MLWK STD-UPPER CABINET W/ LIGHT
1/2" = 1'-0"



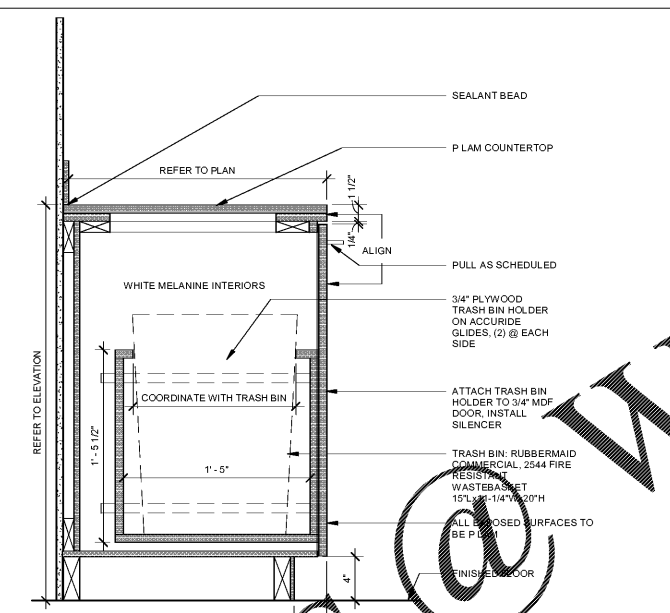
MLWK STD-BASE CABINET P LAM TOP
1/2" = 1'-0"



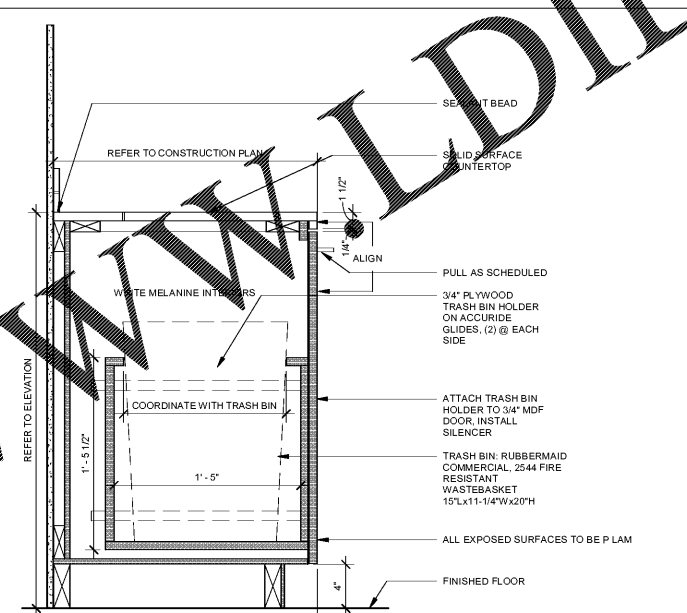
MLWK STD-BASE CABINET P LAM TOP W/ DRAWERS
1/2" = 1'-0"



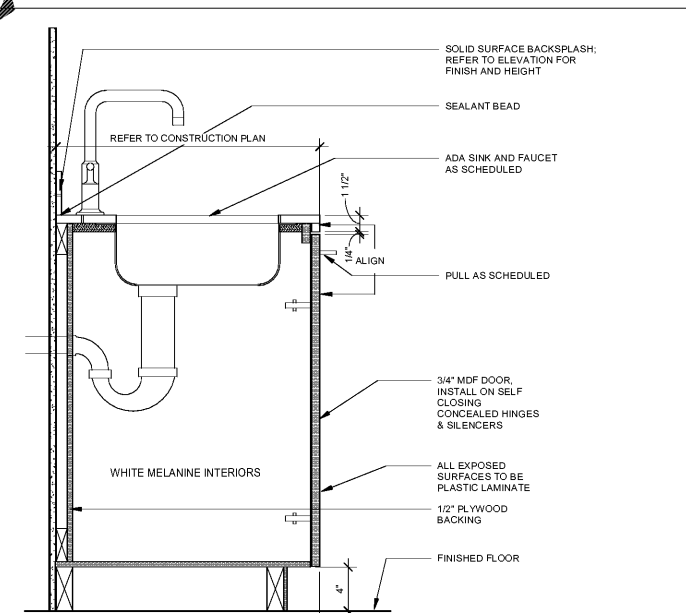
MLWK STD-BASE CABINET P LAM TOP W/ SINK
1/2" = 1'-0"



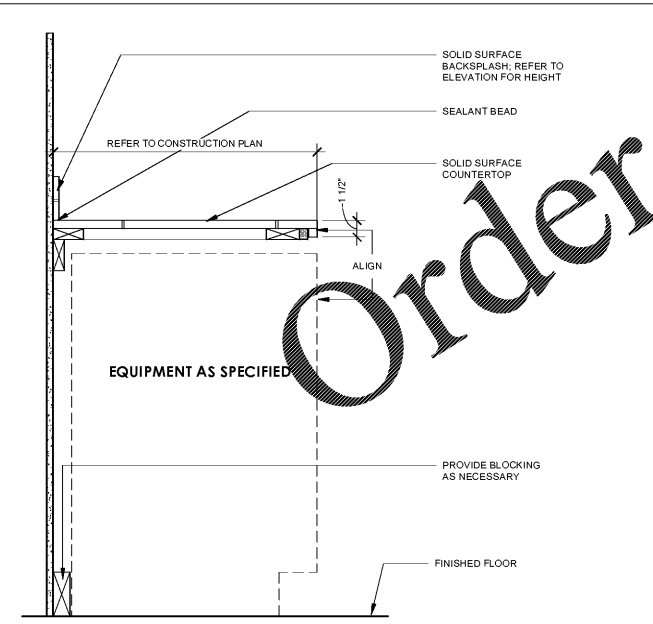
MLWK STD-BASE CABINET P LAM TOP W/ TRASH
1/2" = 1'-0"



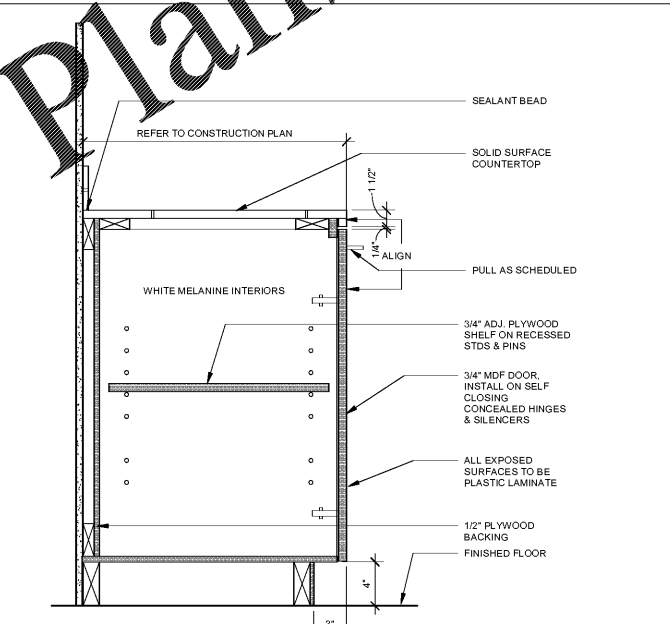
MLWK STD-BASE CABINET SS TOP W/ TRASH
1/2" = 1'-0"



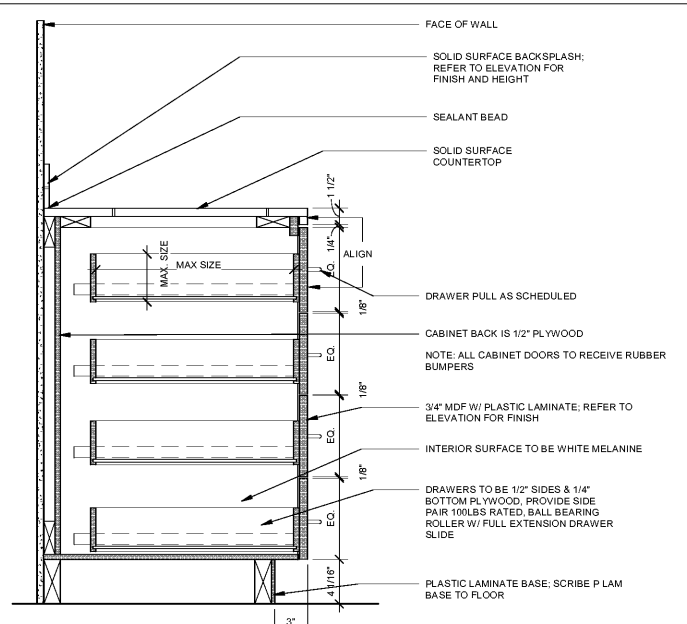
MLWK STD-BASE CABINET SS TOP W/ SINK
1/2" = 1'-0"



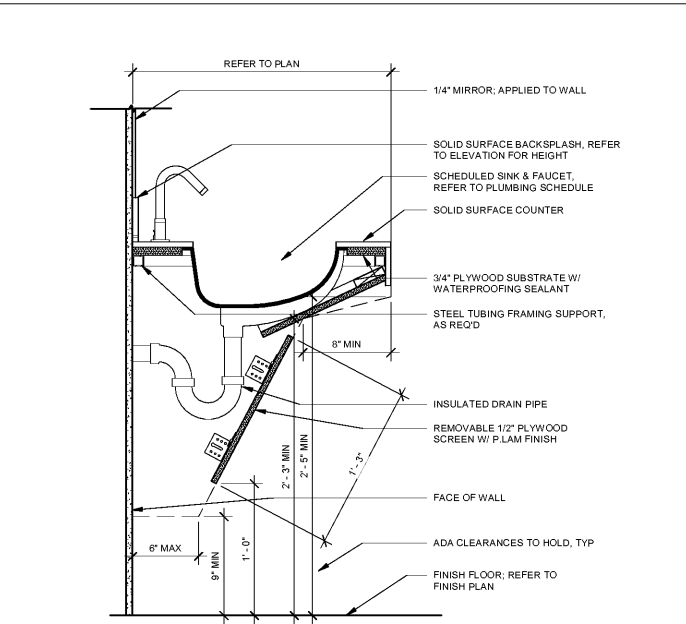
MLWK STD-BASE CABINET SS TOP W/ BUILT IN REFRIGERATOR
1/2" = 1'-0"



MLWK STD-BASE CABINET SS TOP
1/2" = 1'-0"



MLWK STD-BASE CABINET SS TOP W/ DRAWERS
1/2" = 1'-0"



MLWK STD-VANITY SS TOP
1/2" = 1'-0"

FLEISCHMANGARCIA
ARCHITECTURE : PLANNING : INTERIORS
1807 CATALINA AVENUE SUITE 300
SAN ANTONIO, TEXAS 78202
PHONE (214) 342-2222
FAX (214) 342-2223
www.fleischmangarcia.com

**HILLSBOROUGH COUNTY
NEW TAMPA PERFORMING ARTS
CENTER**
8550 HUNTERS VILLAGE RD.
TAMPA FL, 33647

THIS DESIGN AND DRAWING IS THE SOLE PROPERTY OF FLEISCHMANGARCIA. NO PART OF THIS WORK MAY BE REPRODUCED WITHOUT PRIOR WRITTEN PERMISSION FROM FLEISCHMANGARCIA.

I CERTIFY TO THE BEST OF MY KNOWLEDGE THAT THESE DRAWINGS COMPLY WITH ALL RELEVANT BUILDING CODES.

PERMIT SET



MARCEL MASLOWSKI
AR98182

FGA PROJECT NUMBER
19048

ISSUE DATE
04-15-2020

NO.	DATE	NOTES

SHEET NAME

INTERIOR DETAILS

SHEET NUMBER
A7.32

Order Plans @ www.wldline.com