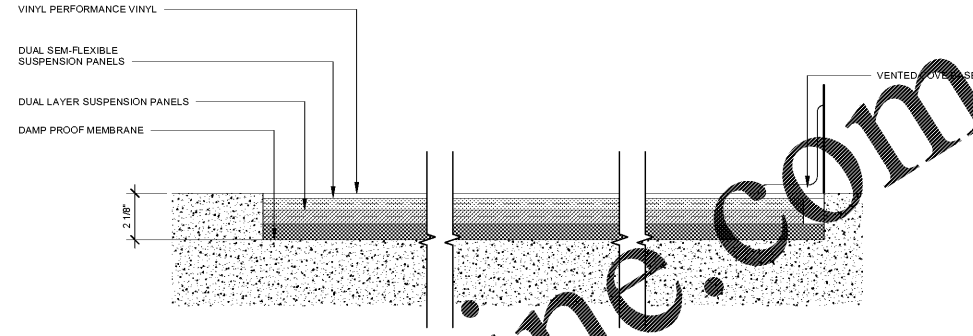
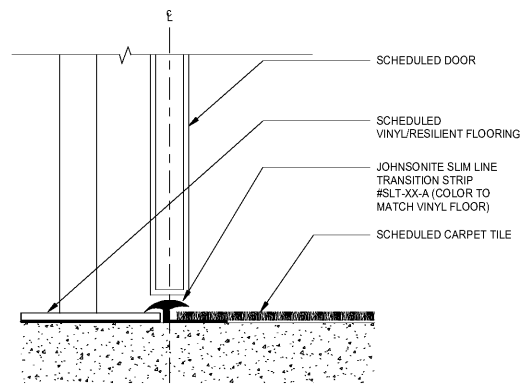


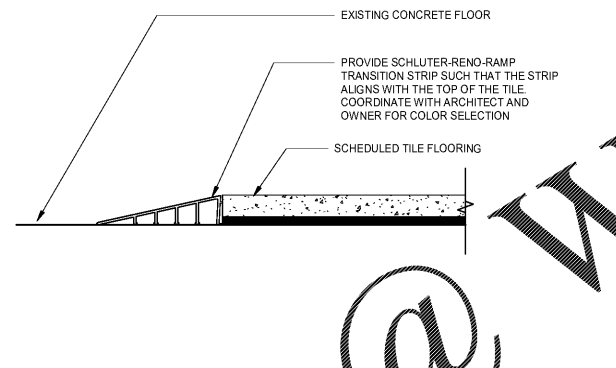
**SHOWER RECEPTOR**  
1 1/2" = 1'-0"



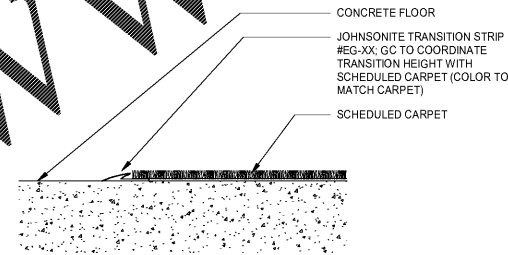
**STUDIO VINYL FLOOR TRANSITION**  
3" = 1'-0"



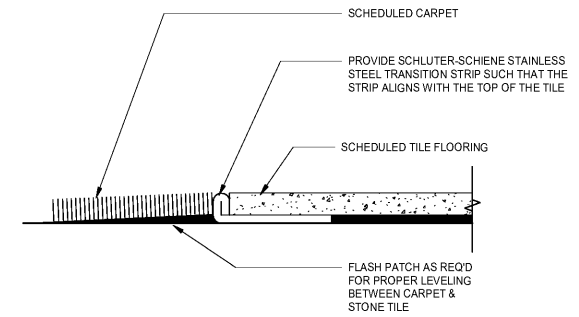
**FLOOR TRANSITION VCT TO CARPET**  
3" = 1'-0"



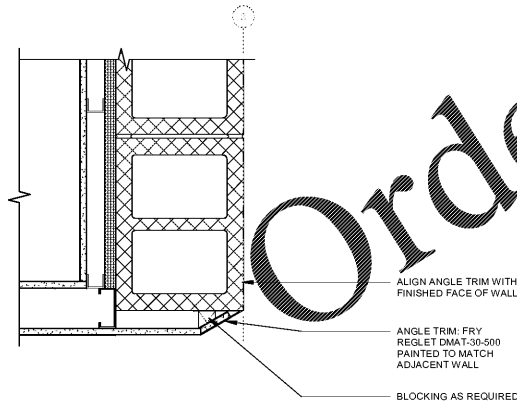
**FLOOR TRANSITION CONCRETE TO TILE**  
3" = 1'-0"



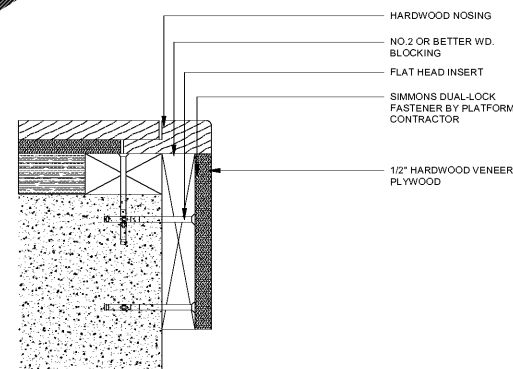
**FLOOR TRANSITION CONCRETE TO CARPET**  
3" = 1'-0"



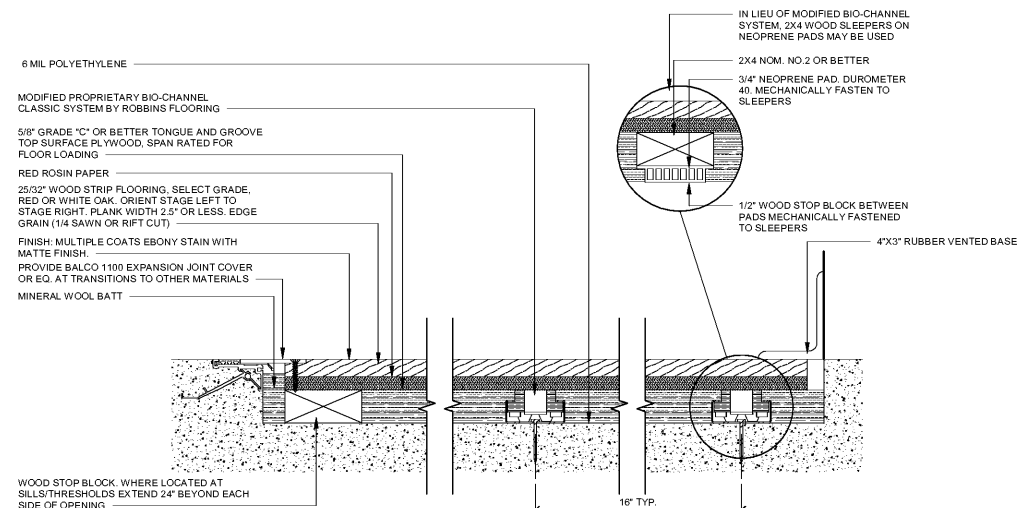
**FLOOR TRANSITION CARPET TO TILE**  
3" = 1'-0"



**INTERIOR DETAIL - KNIFE EDGE AT THEATER**  
1 1/2" = 1'-0"



**STAGE FLOOR EDGE DETAIL**  
3" = 1'-0"



- GENERAL NOTES:  
 1. PROVIDE A 1/16"-1/8" PERIMETER CONTROL JOINT ON ALL SHEET GOODS  
 2. SECURE SHEET GOODS WITH COUNTERSUNK #8 FLAT HEAD TAPPING SCREWS IN PATTERNS / FREQUENCY AS RECOMMENDED BY MFG.  
 3. CONCRETE TOLERANCE: 1/8" IN RADIUS OF 10'; STEEL TROWLED SURFACE  
 4. PROVIDE FLUSH DOOR SILLS

**STAGE FLOOR DETAILS**  
3" = 1'-0"

**FLEISCHMANGARCIA**  
 ARCHITECTURE : PLANNING : INTERIORS  
 304 HYDE PARK AVENUE, SUITE 300  
 TAMPA, FLORIDA 33606  
 PHONE (813) 271-4400  
 FAX (813) 271-1894  
 REGISTRATION NUMBER: 141031010  
 WWW.FLEISCHMANGARCIA.COM

**HILLSBOROUGH COUNTY  
 NEW TAMPA PERFORMING ARTS  
 CENTER**  
 8550 HUNTERS VILLAGE RD.  
 TAMPA FL, 33647

THIS DESIGN AND DRAWING IS THE SOLE PROPERTY OF FLEISCHMANGARCIA. NO PART OF THIS WORK MAY BE REPRODUCED WITHOUT PRIOR WRITTEN PERMISSION FROM FLEISCHMANGARCIA.

I CERTIFY TO THE BEST OF MY KNOWLEDGE THAT THESE DRAWINGS COMPLY WITH ALL RELEVANT BUILDING CODES.

PERMIT SET



**MARCEL MASLOWSKI**  
AR98182

FGA PROJECT NUMBER  
19048

ISSUE DATE  
04-15-2020

| REVISIONS |       |
|-----------|-------|
| NO.       | NOTES |
|           |       |
|           |       |
|           |       |

SHEET NAME

INTERIOR DETAILS

SHEET NUMBER  
**A7.31**

Order Plans @ [www.LDILine.com](http://www.LDILine.com)