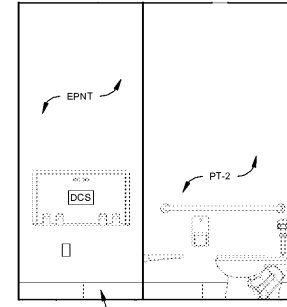
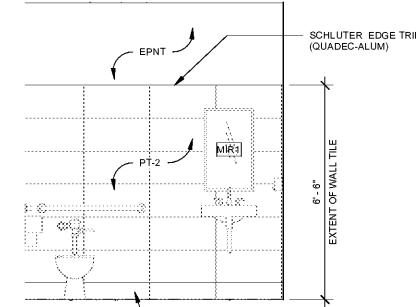


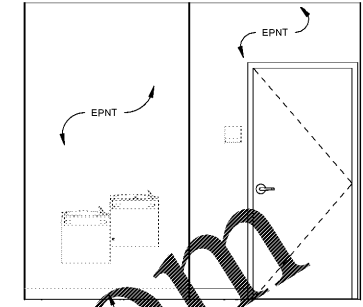
TOILET ACCESSORY SCHEDULE		
TAG CODE	DESCRIPTION	NOTES
DCS	DIAPER CHANGING STATION	27" A.F.F. TO BOTTOM OF UNIT
FSS	FOLDING SHOWER SEAT	17"-20" A.F.F. TO TOP OF SEAT
FUS	FOLDING UTILITY SHELF	
GB1	GRAB BAR	36" A.F.F.
GB2	GRAB BAR	42" A.F.F.
MIR1	MIRROR	40" A.F.F. TO BOTTOM OF REFLECTING SURFACE
MIR2	MIRROR	24"x60" MIRROR
MIR3	MIRROR	36"x36" LED ILLUMINATOR (MODEL # 63406028)
PTD	PAPER TOWEL DISPENSER	48" A.F.F. TO BOTTOM OF UNIT
SCR	SHOWER CURTAIN ROD	A.F.F. TO CENTER OF ROD
SND	SANITARY NAPKIN DISPOSAL	48" A.F.F. TO BOTTOM OF UNIT
TPD	TOILET PAPER DISPENSER	28" A.F.F. TO TOP OF DISPENSER



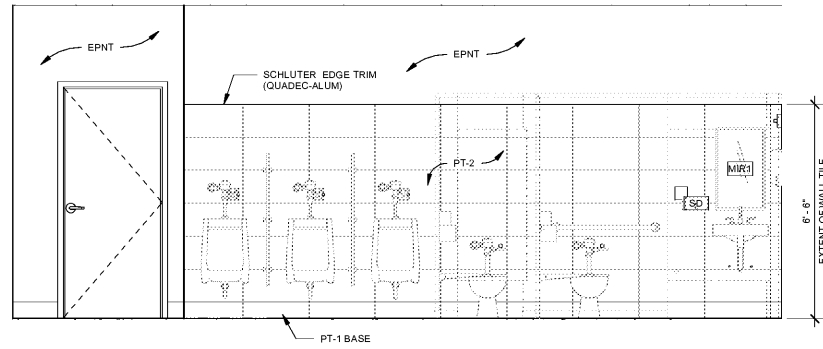
INTERIOR ELEVATION - ADA RESTROOM VANITY
3/8" = 1'-0" 10



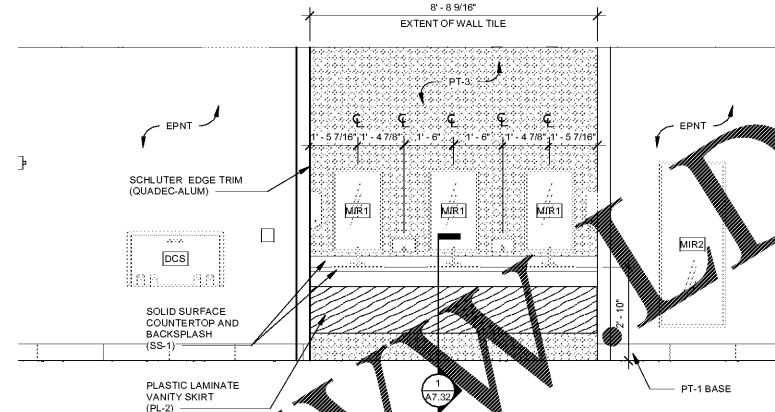
INTERIOR ELEVATION - ADA RESTROOM
3/8" = 1'-0" 9



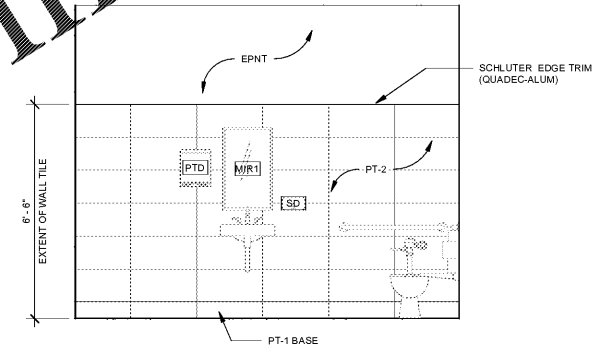
INTERIOR ELEVATION - WATER FOUNTAIN
3/8" = 1'-0" 8



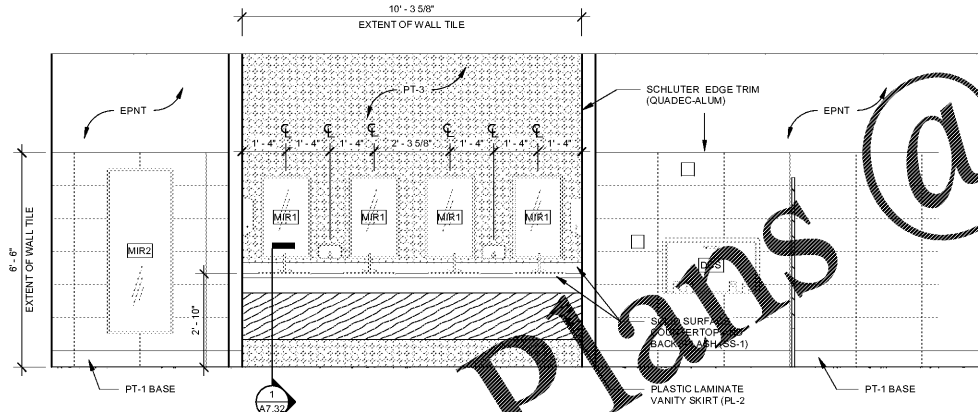
INTERIOR ELEVATION - MEN RESTROOM
3/8" = 1'-0" 7



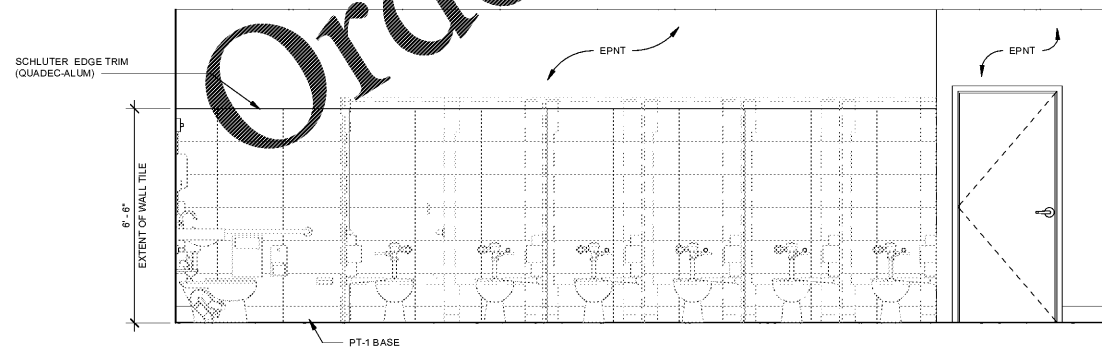
INTERIOR ELEVATION - MEN RESTROOMS VANITY
3/8" = 1'-0" 6



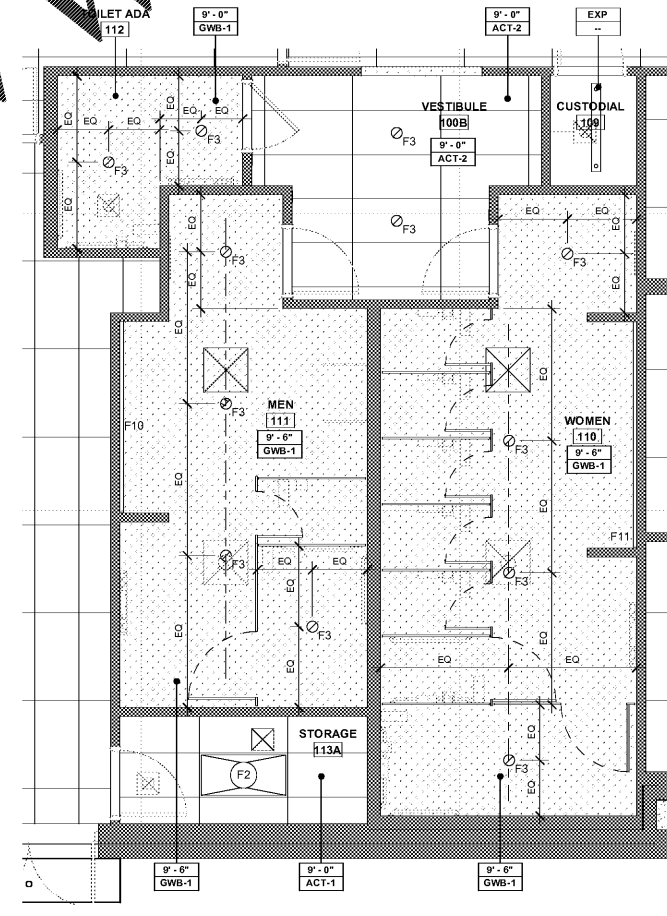
INTERIOR RESTROOM - ADA STALL VANITY
3/8" = 1'-0" 5



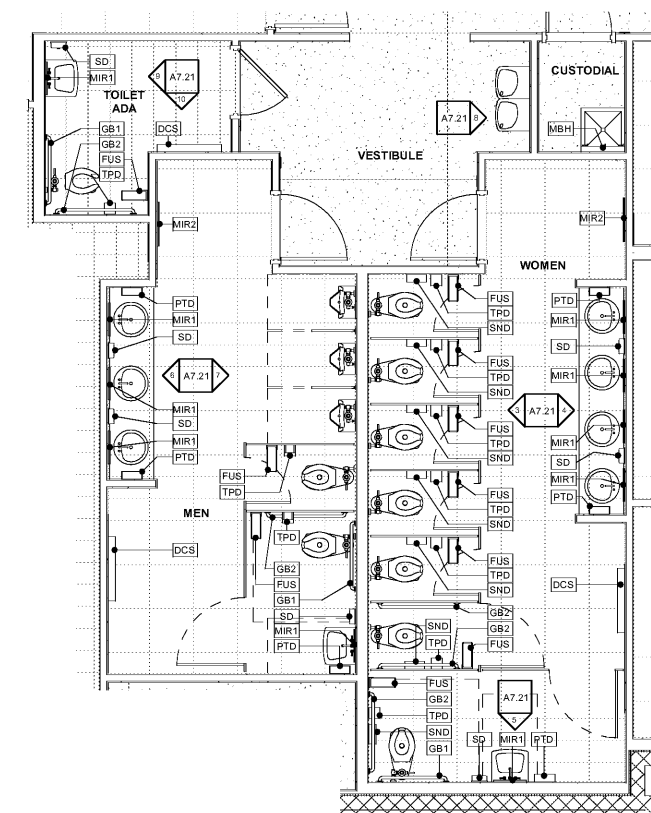
INTERIOR ELEVATION - WOMEN RESTROOM VANITY
3/8" = 1'-0" 4



INTERIOR ELEVATION - WOMEN RESTROOM
3/8" = 1'-0" 3



ENLARGED RCP - RESTROOMS
1/4" = 1'-0" 2



ENLARGED PLAN - RESTROOMS
1/4" = 1'-0" 1

FLEISCHMAN GARCIA
ARCHITECTURE : PLANNING : INTERIORS
304 HYDE PARK AVENUE, SUITE 300
MIAMI, FL 33137
PHONE (772) 725-8800
FAX (772) 725-8800
WWW.FLEISCHMANGARCIA.COM

**HILLSBOROUGH COUNTY
NEW TAMPA PERFORMING ARTS
CENTER**
8550 HUNTERS VILLAGE RD.
TAMPA FL 33647

THIS DESIGN AND DRAWING IS THE SOLE PROPERTY OF FLEISCHMANGARCIA. NO PART OF THIS WORK MAY BE REPRODUCED WITHOUT PRIOR WRITTEN PERMISSION FROM FLEISCHMANGARCIA.

CERTIFY TO THE BEST OF MY KNOWLEDGE THAT THESE DRAWINGS COMPLY WITH ALL RELEVANT BUILDING CODES.

PERMIT SET



MARCEL MASLOWSKI
AR98182

FGA PROJECT NUMBER
19048

ISSUE DATE
04-15-2020

NO.	DATE	REVISIONS	NOTES

SHEET NAME

RESTROOMS

SHEET NUMBER
A7.21

Order Plans @ www.LDILine.com