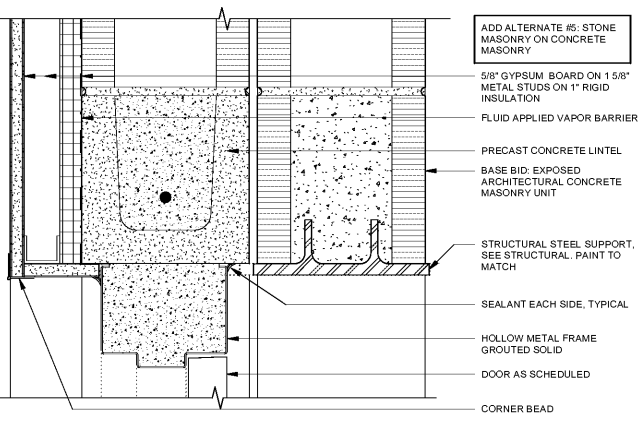
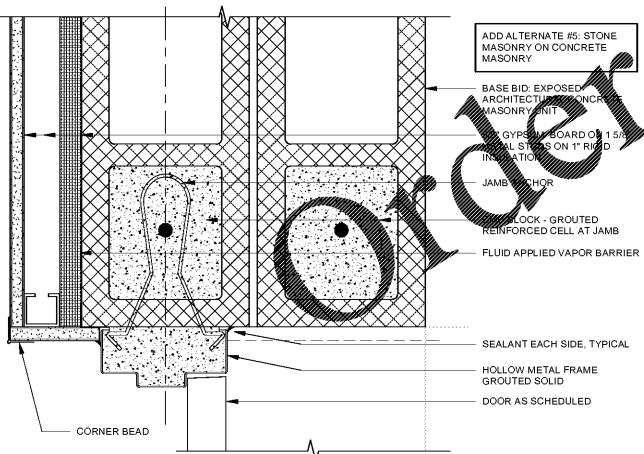


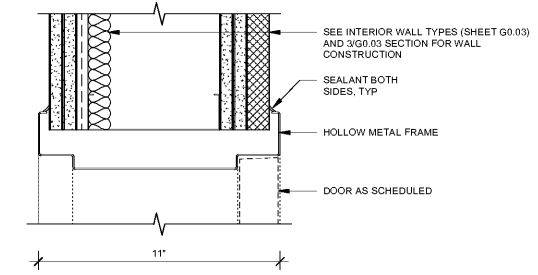
EXTERIOR DETAIL - STOREFRONT JAMB AT POST AND CMU 13
3" = 1'-0"



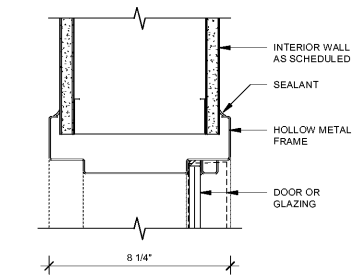
HEAD DETAIL @ 2 WYTHE CMU WALL 8
3" = 1'-0"



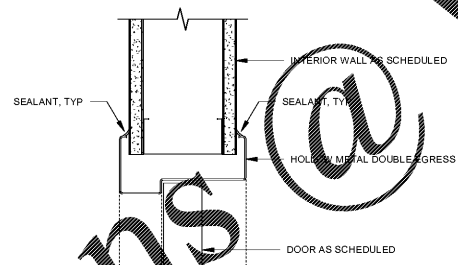
JAMB DETAIL @ 2 WYTHE CMU WALL 4
3" = 1'-0"



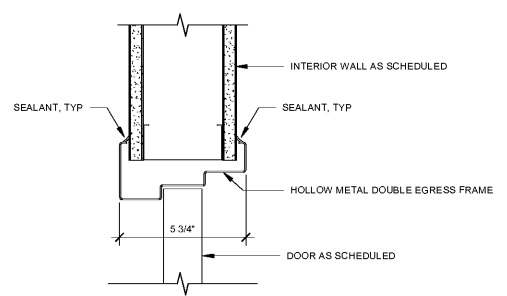
6" STUD WALL HEAD/JAMB DETAIL @ MECH RM 12
3" = 1'-0"



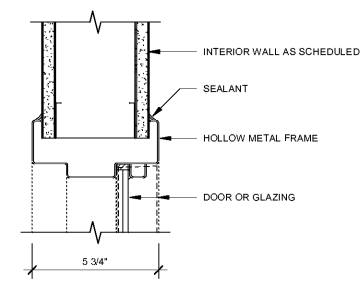
6" STUD WALL HEAD/JAMB DETAIL 11
3" = 1'-0"



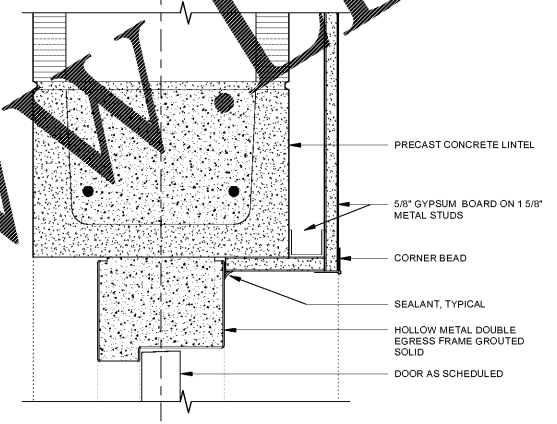
HEAD DETAIL @ STUD - DOUBLE EGRESS DOOR/FRAME 7
3" = 1'-0"



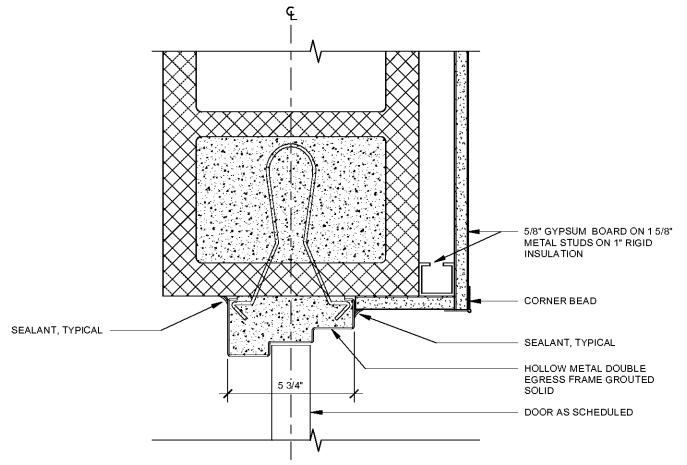
JAMB DETAIL @ STUD - DOUBLE EGRESS DOOR/FRAME 3
3" = 1'-0"



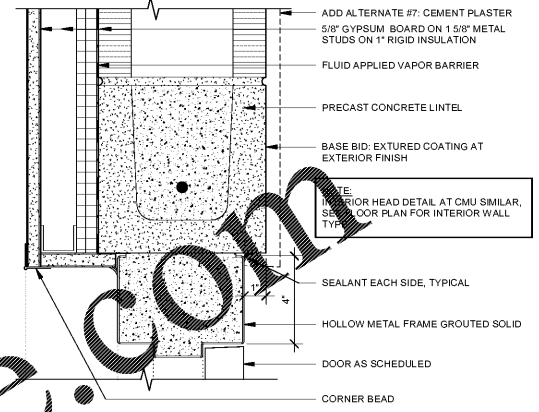
HEAD/JAMB DETAIL @ MECH RM 10
3" = 1'-0"



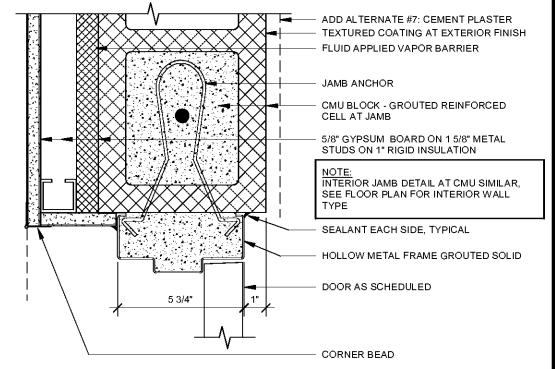
4" HEAD DETAIL @ CMU - DOUBLE EGRESS DOOR 6
3" = 1'-0"



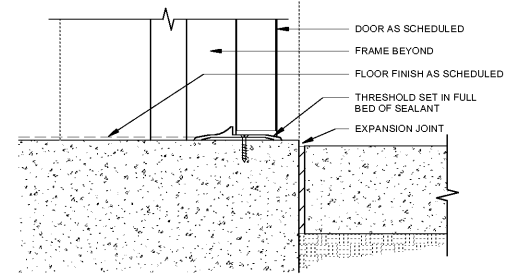
JAMB DETAIL @ CMU - DOUBLE EGRESS DOOR 2
3" = 1'-0"



4" HEADER DETAIL 9
3" = 1'-0"



JAMB DETAIL 5
3" = 1'-0"



THRESHOLD DETAIL 1
3" = 1'-0"

FLEISCHMANGARCIA
ARCHITECTURE : PLANNING : INTERIORS
199 FORTY-NINTH AVENUE NORTH
SUITE 300
TAMPA, FL 33610
PHONE (727) 725-8800
FAX (727) 725-8800
WWW.FLEISCHMANGARCIA.COM

HILLSBOROUGH COUNTY
NEW TAMPA PERFORMING ARTS
CENTER
8550 HUNTERS VILLAGE RD.
TAMPA FL 33647

THIS DESIGN AND DRAWING IS THE SOLE PROPERTY OF FLEISCHMANGARCIA. NO PART OF THIS WORK MAY BE REPRODUCED WITHOUT PRIOR WRITTEN PERMISSION FROM FLEISCHMANGARCIA.

I CERTIFY TO THE BEST OF MY KNOWLEDGE THAT THESE DRAWINGS COMPLY WITH ALL RELEVANT BUILDING CODES.

PERMIT SET



MARCEL MASLOWSKI
AR98182

FGA PROJECT NUMBER
19048

ISSUE DATE
04-15-2020

REVISIONS	
NO.	NOTES

SHEET NAME

OPENING DETAILS

SHEET NUMBER
A4.03