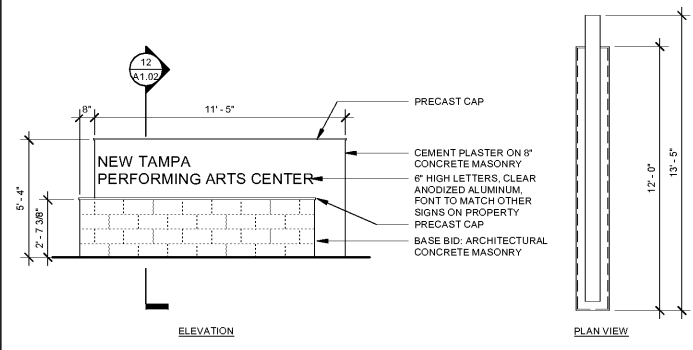
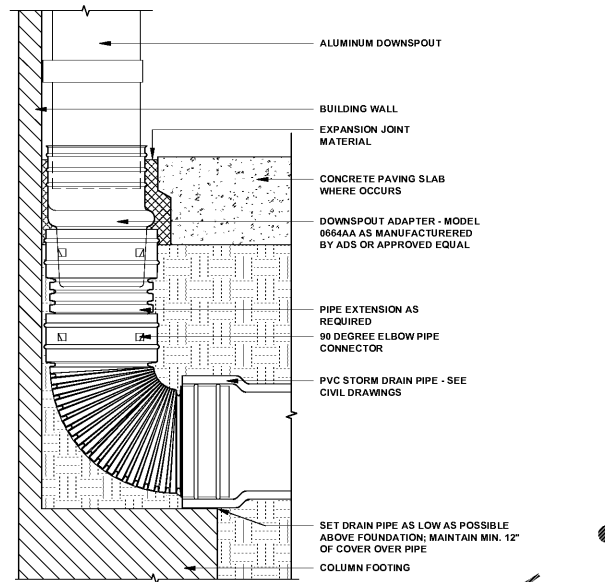


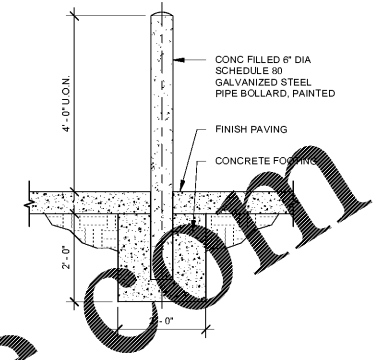
SECTION - MONUMENT SIGN (12)  
1/2" = 1'-0"



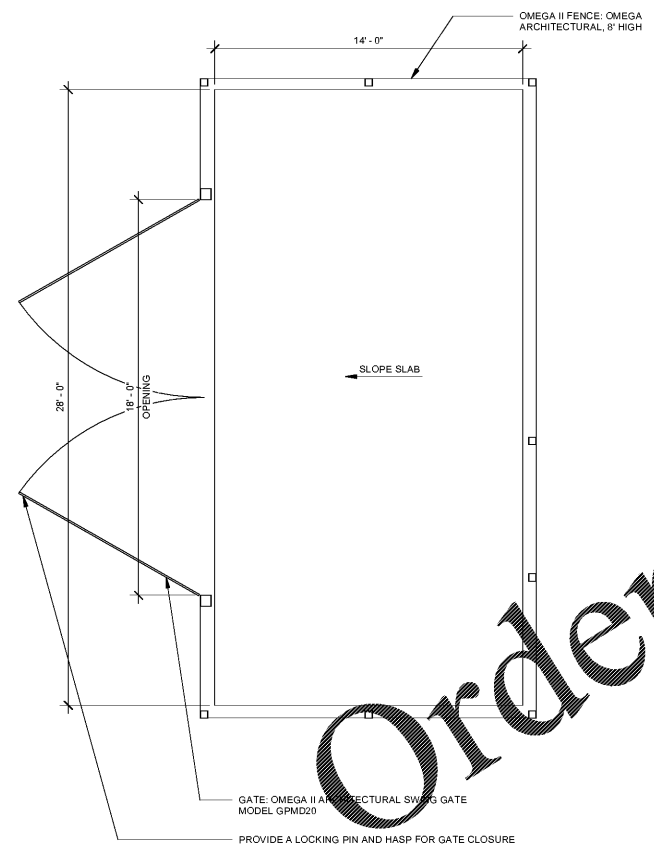
MONUMENT SIGN (11)  
1/4" = 1'-0"



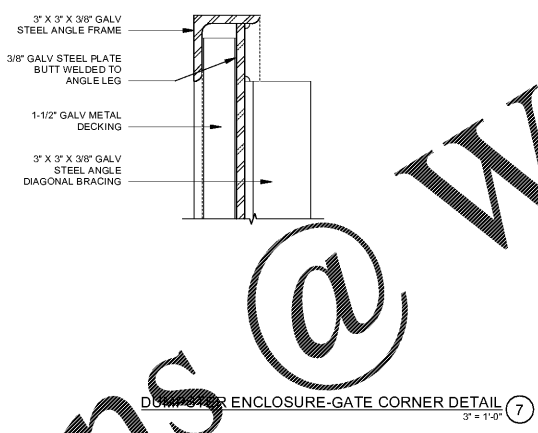
DOWNSPOUT CONNECTOR DETAIL (10)  
1/2" = 1'-0"



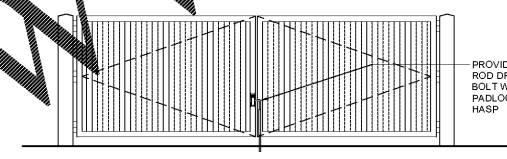
A1.2 DUMPSTER ENCLOSURE-BOLLARD DETAIL (9)  
1/2" = 1'-0"



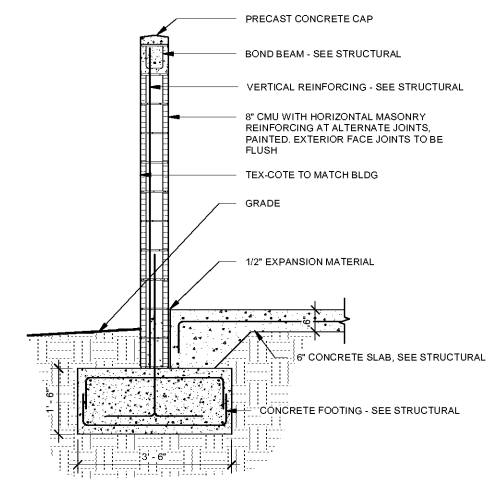
CHILLER ENCLOSURE-PLAN (4)  
1/4" = 1'-0"



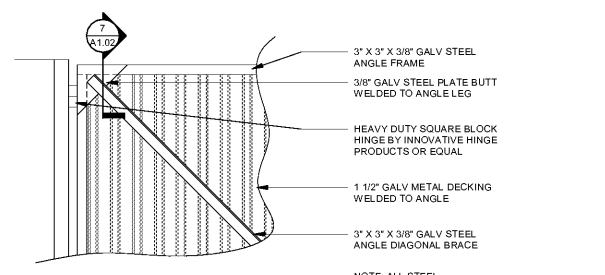
DUMPSTER ENCLOSURE-GATE CORNER DETAIL (7)  
3" = 1'-0"



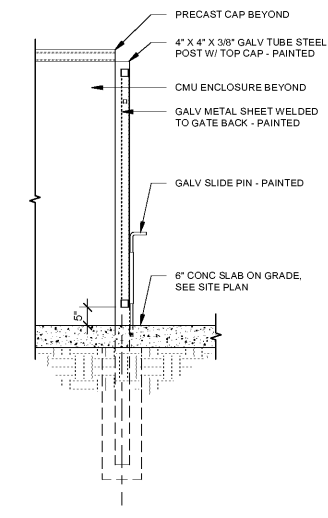
DUMPSTER ENCLOSURE-ELEVATION (6)  
1/4" = 1'-0"



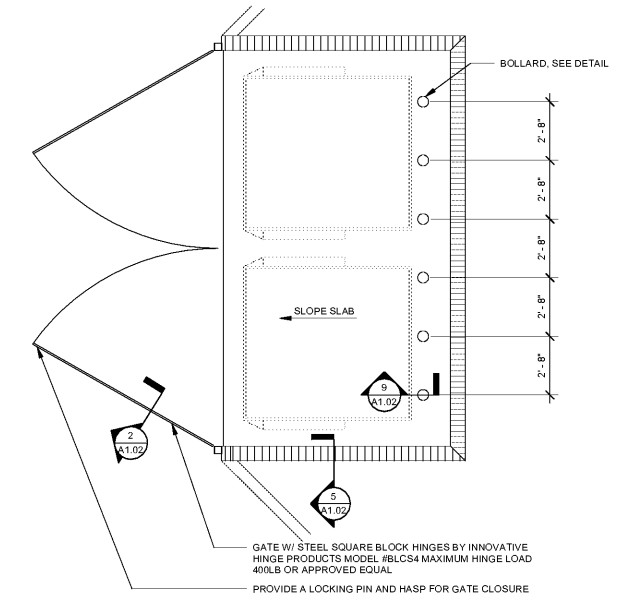
A1.2 DUMPSTER ENCLOSURE-WALL SECTION (5)  
1/2" = 1'-0"



DUMPSTER ENCLOSURE-PARTIAL ELEVATION (3)  
1/2" = 1'-0"



A1.2 DUMPSTER ENCLOSURE-GATE SECTION (2)  
1/2" = 1'-0"



A1.2 DUMPSTER ENCLOSURE-PLAN (1)  
1/4" = 1'-0"

**FLEISCHMANGARCIA**  
ARCHITECTURE : PLANNING : INTERIORS  
304 HYDE PARK AVENUE, SUITE 300  
TAMPA, FL 33609  
PHONE (813) 271-4400  
FAX (813) 271-1994  
REGISTRATION NUMBER FL 000103  
WWW.FLEISCHMANGARCIA.COM

SAFETY NUMBER OFFICE  
199 FULTON AVENUE NORTH  
TAMPA, FL 33604-3666  
PHONE (813) 271-4400  
FAX (813) 271-1994

SAFETY NUMBER OFFICE  
199 FULTON AVENUE NORTH  
TAMPA, FL 33604-3666  
PHONE (813) 271-4400  
FAX (813) 271-1994

HILLSBOROUGH COUNTY  
NEW TAMPA PERFORMING ARTS  
CENTER  
8550 HUNTERS VILLAGE RD.  
TAMPA FL 33647

THIS DESIGN AND DRAWING IS THE SOLE PROPERTY OF FLEISCHMANGARCIA. NO PART OF THIS WORK MAY BE REPRODUCED WITHOUT PRIOR WRITTEN PERMISSION FROM FLEISCHMANGARCIA.

I CERTIFY TO THE BEST OF MY KNOWLEDGE THAT THESE DRAWINGS COMPLY WITH ALL RELEVANT BUILDING CODES.

PERMIT SET



MARCEL MASLOWSKI  
AR98182

FGA PROJECT NUMBER  
19048

ISSUE DATE  
04-15-2020

NO.	DATE	NOTES

SHEET NAME

SITE DETAILS

SHEET NUMBER  
**A1.02**

Order Plans @ [www.LDILine.com](http://www.LDILine.com)

www.LDILine.com