

LANDSCAPE SPECIFICATIONS

1. ALL PLANT MATERIAL SHALL BE FLORIDA GRADE NO 1 OR BETTER PER "GRADES AND STANDARDS FOR NURSERY PLANTS, PART I & III", FLORIDA DEPARTMENT OF AGRICULTURE, TALLAHASSEE, FL.
2. ALL PERMITS NECESSARY FOR INSTALLATION/CONSTRUCTION ARE TO BE PROVIDED BY THE LANDSCAPE CONTRACTOR UNLESS OTHERWISE SPECIFICALLY STATED IN THE LANDSCAPE PLANS OR NOTES.
3. INSTALLATION OF LANDSCAPE MUST BE COORDINATED WITH OTHER SUBCONTRACTORS. THE LANDSCAPE CONTRACTOR WILL BE RESPONSIBLE FOR LOCATING UNDERGROUND UTILITIES PRIOR TO EXCAVATION.
4. THE CONTRACTOR SHALL NOTIFY THE LANDSCAPE ARCHITECT IF ANY CONFLICTS ARISE BETWEEN THE PROPOSED DESIGN AND EXISTING CONDITIONS ON-SITE.
5. THE CONTRACTOR IS RESPONSIBLE FOR FAMILIARIZING HIMSELF WITH ON-SITE CONDITIONS AS PART OF THE BIDDING PROCESS. THE CONTRACTOR SHALL NOTIFY THE LANDSCAPE ARCHITECT PRIOR TO AWARD OF CONTRACT OF ANY ON-SITE CONDITIONS THAT WOULD HINDER THE NORMAL, HEALTHY GROWTH OF PLANT SPECIES PROPOSED ON THESE PLANS.
6. THE LANDSCAPE ARCHITECT MAY BE CONTACTED FOR ASSISTANCE IN LAYOUT OF PLANT MATERIAL. IF NEEDED. ALL QUESTIONS REGARDING PLANT PLACEMENT MUST BE RESOLVED PRIOR TO COMMENCEMENT OF INSTALLATION.
7. CAREFULLY REVIEW THE LANDSCAPE MATERIAL SPECIFICATIONS. ALL MATERIALS MUST BE AS SPECIFIED ON THE LANDSCAPE PLANS. IF MATERIALS OR LABOR DO NOT ADHERE TO SPECIFICATIONS, THE LANDSCAPE ARCHITECT WILL REJECT THEM.
8. THE LANDSCAPE ARCHITECT WILL ACCEPT NO SUBSTITUTIONS OF PLANT MATERIAL SPECIES WITHOUT WRITTEN APPROVAL. CONTRACTOR SHALL SUBMIT TO THE LANDSCAPE ARCHITECT PROOF OF NON-AVAILABILITY AND A PROPOSAL FOR THE USE OF EQUIVALENT MATERIAL.
9. PLANT MATERIAL QUANTITIES SHOWN ON THESE PLANS ARE SUPPLIED AS AN AID TO THE CONTRACTOR FOR BIDDING PURPOSES. FINAL QUANTITY TAKEOFFS ARE THE RESPONSIBILITY OF THE CONTRACTOR. NOTIFY THE LANDSCAPE ARCHITECT IF ANY DISCREPANCIES EXIST PRIOR TO PROCEEDING WITH ANY CHANGES IN MATERIAL QUANTITIES.
10. PLANT SPECIFICATIONS OF HEIGHT, CLEAR TRUNK, SPREAD AND CONTAINER SIZE SHOWN ON THESE PLANS ARE MINIMUM ACCEPTABLE SIZES. ALL INSTALLED MATERIAL SHALL MEET OR EXCEED THE GIVEN SPECIFICATION. THE CONTRACTOR SHALL SUBMIT TO THE LANDSCAPE ARCHITECT PROOF OF NON-AVAILABILITY AND A PROPOSAL FOR THE USE OF EQUIVALENT MATERIAL.
11. THE GENERAL CONTRACTOR IS RESPONSIBLE FOR ROUGH GRADING THE SITE TO WITHIN 0.10% FT. OF FINISH GRADE SHOWN ON THESE PLANS. THE LANDSCAPE CONTRACTOR IS RESPONSIBLE FOR FINISH GRADES IN ALL LANDSCAPE AREAS. ALL PLANT BED AND CONTOURS SHOWN ON THE LANDSCAPE PLANS ARE TO BE GRADED TO A MAXIMUM SLOPE OF 3%.
12. PLANTING BEDS SHALL BE TREATED WITH A USEPA APPROVED PESTICIDE. THE CONTRACTOR SHALL PROVIDE PROTECTIVE INSTALLATION OF PLANT MATERIAL. CONTRACTOR SHALL FOLLOW MANUFACTURER'S SPECIFICATIONS FOR APPLICATION RATES, ETC.
13. PLANTING BEDS SHALL BE FINISHED WITH A 3" LAYER OF "FIN" WASHED SHELL SAND APPROX. EQUAL. WHERE NOT SPECIFICALLY OTHERWISE NOTED, BEDLINES SHALL BE DEFINED BY A HORIZONTAL LINE OFFSET FROM SHRUBS AND GROUNDCOVERS BY A DISTANCE EQUAL TO THE SPACING OF PLANT MATERIALS. FREESTANDING TREES SHALL BE MULCHED WITH A 3' RADIUS PLANTING BED.
14. PLANTING PITS SHALL BE AMENDED AND BACKFILLED WITH A MIXTURE OF ONE PART GOOD QUALITY PEAT OR COMPOSTED FINES, AND ONE PART NATIVE SOIL OR APPROVED EQUAL. ALL ANNUAL BEDS SHALL BE FILLED TO A DEPTH OF TEN INCHES WITH AN APPROVED SOIL MIX. CONTRACTOR SHALL SUBMIT SAMPLES FOR APPROVAL. CONTRACTOR SHALL ALSO PLACE AN APPROPRIATE QUANTITY OF "AGRIFORM" SLOW RELEASE FERTILIZER TABLETS INTO EACH PLANT PIT.
15. THE CONTRACTOR IS RESPONSIBLE FOR APPROPRIATE WATERING AND MAINTENANCE OF ALL PLANT MATERIAL DURING THE INSTALLATION PHASE. ANY DEAD OR DEFICIENT PLANT MATERIAL WILL BE REPLACED PRIOR TO FINAL ACCEPTANCE BY THE OWNER.
16. THE CONTRACTOR SHALL WARRANT ALL WORKMANSHIP AND MATERIALS. TREES SHALL BE WARRANTED FOR ONE YEAR, SHRUBS AND GROUNDCOVER SHALL BE WARRANTED FOR SIX MONTHS.
17. THE CONTRACTOR SHALL VERIFY THAT THE SOIL IS FREE OF EXCESS CLAY, DEBRIS AND TRASH AND HAS A PH LEVEL SUITABLE FOR OPTIMAL GROWING CONDITIONS PRIOR TO IMPLEMENTATION OF THE PROPOSED PLAN.
18. ALL LANDSCAPE BIDS SHALL PROVIDE UNIT PRICE BREAKDOWNS FOR PLANTS AND SUPPLEMENTAL MATERIALS.
19. ALL LANDSCAPE AREAS SHALL EITHER BE MULCHED OR SODDED IN ACCORDANCE WITH LOCAL MUNICIPAL OR JURISDICTIONAL REGULATIONS.
20. AFTER COMPLETION OF PLANTING, THE CONTRACTOR SHALL REMOVE ALL ROPE "CROSS-TIES" FROM THE TOP OF THE ROOTBALL AND CUT THE WIREBASKET AWAY FROM THE TOP OF THE ROOTBALL.

PLANT LIST
TREES

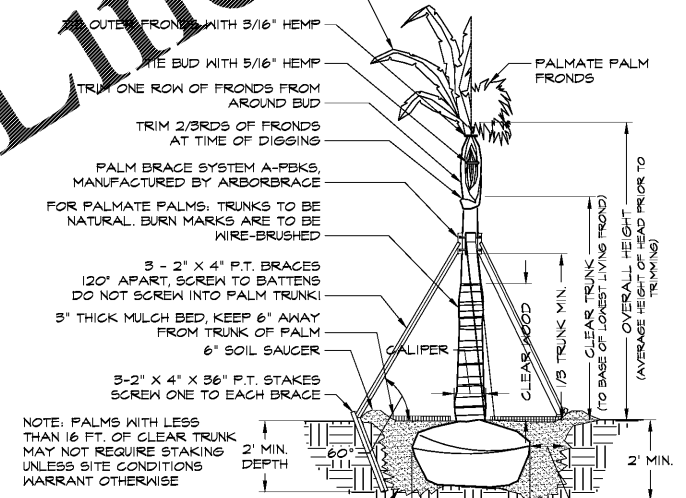
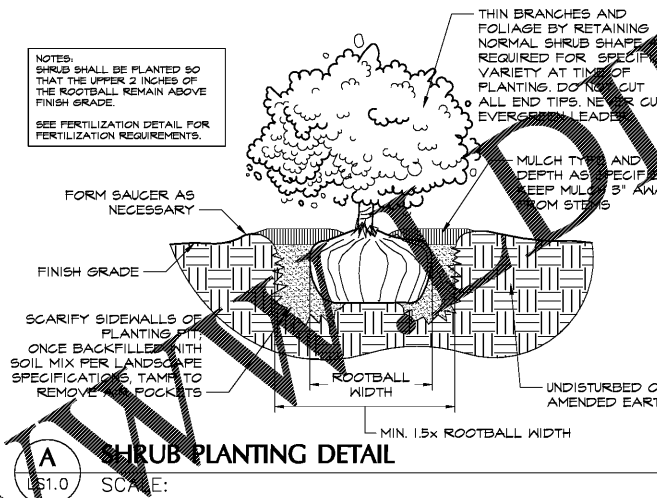
KEY	Quantity	Botanical Name	Common Name	MATRIX	REMARKS	CALIPER (in)	HEIGHT	CROWN DIAMETER	ROOT BALL DIAMETER	MINIMUM CONTAINER VOLUME
IVP	4	<i>Ilex vomitoria 'Pendula'</i>	Weeping Yaupon Holly	2	Multi-trunk (3-5 stems)	2	8'	>= 24"	>= 24"	30 gallons
MF	4	<i>Myrcianthes fragrans</i>	Simpson's Stopper	3	Multi-trunk (3-5 stems)	2	8'	>= 30"	>= 24"	30 gallons

SHRUBS

KEY	Quantity	Botanical Name	Common Name	TYPE	REMARKS	SPACING	TOTAL HEIGHT	MINIMUM AVERAGE SPREAD	APPROX. CONTAINER SIZE
HL	3	<i>Hymenocallis latifolia</i>	Spider lily	Emergent	full	as shown	18"	18"	3 gallons

GROUNDCOVERS AND SPECIAL GRADE

KEY	Quantity	Botanical Name	Common Name	TYPE	REMARKS	SPACING	TOTAL HEIGHT	MINIMUM AVERAGE SPREAD	MINIMUM LEAF COUNT	APPROX. CONTAINER SIZE
AGB	453	<i>Arachis glabrata Benth</i>	Peanut Grass	GC	full in pot	18" O.C.	12"	12"		gallon
NB	33	<i>Nephrolepis biserrata</i>	Macho Fern	SS		36" O.C.	18"	18"		gallons
TF	88	<i>Tripsacum floridana</i>	Dwarf Gama Grass	GC	full in pot	36" O.C.	16"	16"		gallon
ZP	22	<i>Zamia pumila</i>	Coontie	GC		36" O.C.	24"	24"	7	7 gallons



FERTILIZATION - TREES, SHRUBS & GROUNDCOVERS

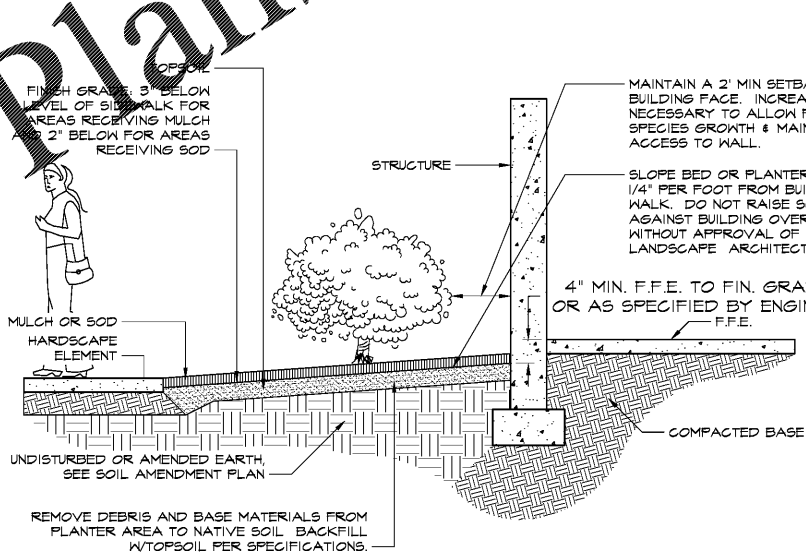
ALL PLANTINGS SHALL BE FERTILIZED WITH AGRIFORM 20-10-15 PLANTING TABLETS AT THE TIME OF INSTALLATION. PRIOR TO COMPLETION OF BACKFILLING, AGRIFORM PLANTING TABLETS SHALL BE PLACED UNIFORMLY AROUND THE ROOT MASS AT THE DEPTH THAT IS BETWEEN THE MIDDLE AND THE BOTTOM OF THE ROOT MASS.

APPLICATION RATES

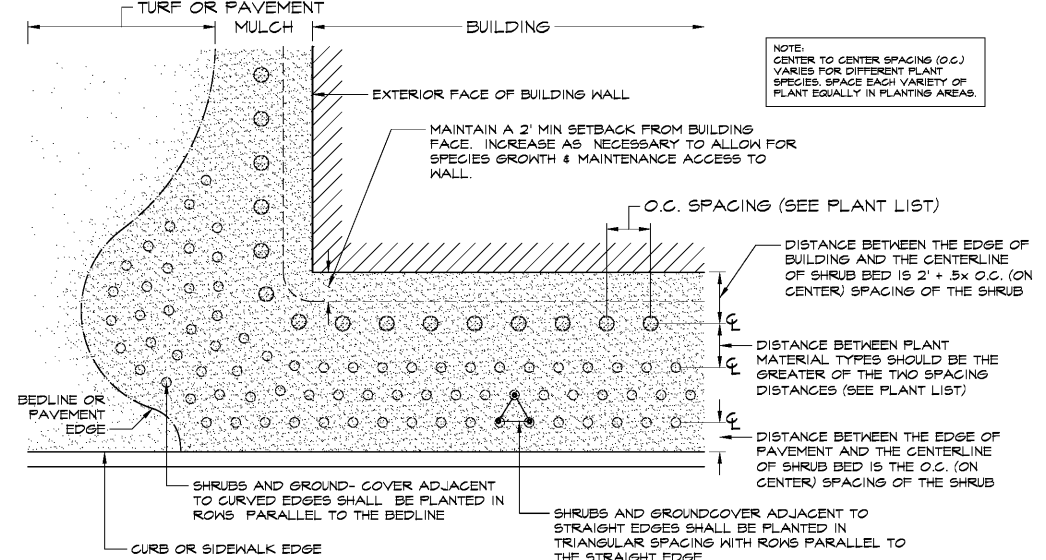
21 GRAM TABLET				10 GRAM TABLET	5 GRAM TABLET
1 GALLON CAN PLANTS	3 GALLON CAN PLANTS	5 GALLON CAN PLANTS	7 GALLON CAN PLANTS	LARGE TREES & B&B TREES	MATURE PALMS
1 TABLET	2 TABLETS	3 TABLETS	4 TABLETS	1 TO 2 TABLETS	1 TABLET

NOTE: LANDSCAPE ARCHITECT MAY MAKE A RANDOM SAMPLING OF PLANT PITS TO DETERMINE THE UNIFORMITY OF APPLICATION.

AGRIFORM 20-10-15 PLANTING TABLETS AS MANUFACTURED BY SIERRA CHEMICAL COMPANY, 1001 YOSEMITE DRIVE, MILPITAS, CA 95035



C PLANTING BED DETAIL
SCALE: LS1.0



D PLANTING ISLAND DETAIL
SCALE: LS1.0

EKISTICS DESIGN STUDIO
1301 WEST LINDBERGH AVENUE
TAMPA, FL 33612 (813) 931-8000

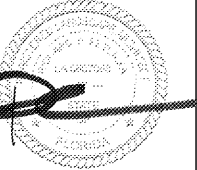
FLEISCHMANGARCIA
TAMPA OFFICE
330 AVENUE OF THE ARTS
TAMPA, FLORIDA 33606
PHONE: (813) 281-1988
FAX: (813) 281-1988
SAFETY HARBOR OFFICE
330 AVENUE OF THE ARTS
SAFETY HARBOR, FLORIDA 34606
PHONE: (813) 281-1988
FAX: (813) 281-1988
REGISTRATION NUMBER: AL 000703
www.fleischmangarcia.com

**HILLSBOROUGH COUNTY
NEW TAMPA PERFORMING ARTS
CENTER**
8550 HUNTERS VILLAGE RD.
TAMPA, FL 33647

THIS DESIGN AND DRAWING IS THE SOLE PROPERTY OF FLEISCHMANGARCIA. NO PART OF THIS WORK MAY BE REPRODUCED WITHOUT PRIOR WRITTEN PERMISSION FROM FLEISCHMANGARCIA.

I CERTIFY TO THE BEST OF MY KNOWLEDGE THAT THESE DRAWINGS COMPLY WITH ALL RELEVANT BUILDING CODES.

PERMIT SET



S/S Date

FGA PROJECT NUMBER
19048

ISSUE DATE
04-15-2020

NO.	DATE	NOTES

SHEET NAME
LANDSCAPE PLAN AND DETAILS

SHEET NUMBER
LS1.0