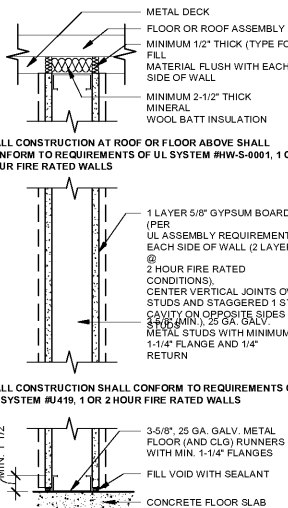
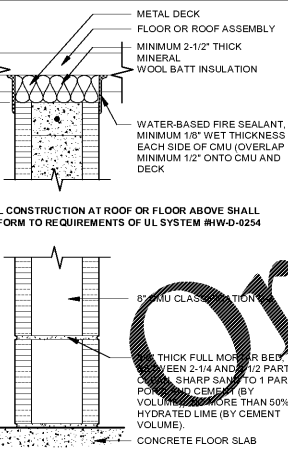


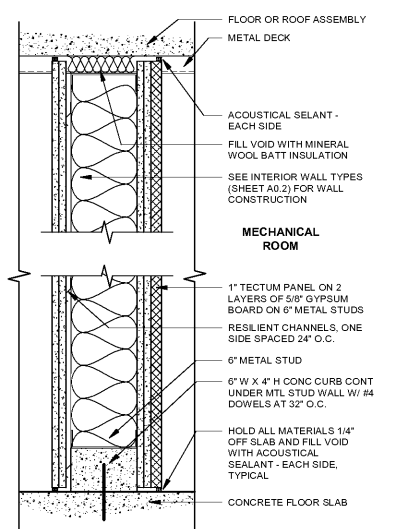
ACOUSTICAL WALL
1 1/2" x 1'-0" ③



FIRE RATED WALL
1 1/2" x 1'-0" ②



FIRE RATED CMU WALL
1 1/2" x 1'-0" ①



WALL SECTION @ MECH ROOM
1 1/2" x 1'-0" ④

- FIRE RATED WALL NOTES**
- HORIZONTAL JOINTS BETWEEN VERTICAL ORIENTED GYPSUM BOARD SHEETS SHALL BE BACKED WITH HORIZONTAL STUDS SPACED AT 16" O.C. BETWEEN VERTICAL STUDS. MINIMUM VERTICAL WALL STUDS IN GAGE, SIZE, AND FASTENING.
 - NONMETALLIC ELECTRICAL OUTLET BOXES SHALL NOT BE INSTALLED ON OPPOSITE SIDES OF RATED WALLS UNLESS CLASSIFIED FOR THE RESISTANCE AS DEFINED BY UL SECTION "OUTLET BOXES AND FITTINGS CLASSIFIED FOR RESISTANCE."
 - METALLIC ELECTRICAL OUTLET BOXES SHALL NOT EXCEED 16 SQUARE INCHES WITHIN THE WALL FACE, NOR EXCEED 100 SQUARE INCHES AGGREGATE SURFACE AREA PER 100 SQUARE FEET OF WALL SURFACE. MAINTAIN A MINIMUM OF 1/8" CLEARANCE BETWEEN BOX AND GYPSUM BOARD. METALLIC BOXES ON OPPOSITE SIDES OF A WALL SHALL BE SEPARATED BY A MINIMUM OF 24" HORIZONTALLY, UNLESS WALL OPENING PROTECTIVE MATERIALS ARE INSTALLED PER REQUIREMENTS OF THEIR CLASSIFICATION, AS SHOWN IN UL SECTION "WALL OPENING PROTECTIVE MATERIALS." ELECTRICAL BOXES EXCEEDING 16 SQUARE INCHES IN FIRE RATED WALLS SHALL BE FRAMED BY STUDS AND INSTALLED WITH A PUTTY PAD APPROVED FOR NECESSARY SIZE, INSTALLED PER MANUFACTURER INSTRUCTIONS.
 - ALL PENETRATIONS SHALL BE SEALED PER APPROPRIATE UL TESTED METHODS, AS DEFINED BY UL SECTION "THROUGH-PENETRATION FIRESTOP SYSTEMS." PENETRATIONS THROUGH CMU RATED WALLS SHALL BE COMPLETELY SURROUNDED BY NON-SHRINK GROUT, WITH NON-COMBUSTIBLE CMU CELL CLOSURE.
 - ALL NAILS SHALL MEET REQUIREMENTS OF ASTM F547 OR ASTM C514.
 - ALL SCREWS SHALL MEET REQUIREMENTS OF ASTM C1002 OR ASTM C954.
 - ALL EXPOSED FINISHES SHALL MEET A FLAME SPREAD INDEX OF LESS THAN 200 AND SMOKE DEVELOPMENT INDEX OF LESS THAN 450, BASED ON TEST METHOD ANSIUL 723.
 - GAGES, SIZES, FASTENERS, AND OTHER QUANTITATIVE NOTES ARE MINIMUMS FOR FIRE RATING REQUIREMENT. IF CONFLICTING WITH OTHER SPECS AND/OR DRAWINGS, THE MORE STRINGENT NOTE/SPEC TAKES PRECEDENCE.
 - FIRE RATED WALLS MUST BE CONSTRUCTED TO ENSURE CONTINUITY OF REQUIRED FIRE RATING. MORE STRINGENT FIRE RATINGS REQUIRE CONTINUITY OVER LESS STRINGENT FIRE RATINGS. FOR EXAMPLE, ENVELOPE OF A FIRE RATED WALL MUST BE COMPLETE PRIOR TO ATTACHMENT OF INTERSECTING NON-RATED WALLS.

- WALL HEIGHT CODES:**
- LETTER INDICATES WALL HEIGHT. SEE WALL HEIGHT CODES.
 - NUMBER INDICATES WALL TYPE. SEE WALL TYPE CODES IN TABLE
- WALL HEIGHT CODES:**
- WALL EXTENDS TO 6" ABOVE HIGHEST ADJACENT CEILING
 - WALL EXTENDS TO, AND IS SEALED TO STRUCTURE ABOVE
 - WALL EXTENDS TO _____ ABOVE FINISHED FLOOR
 - WALL EXTENDS TO T.O. ROOF/PARAPET AND FINISH EXTENDS TO 6" ABOVE HIGHEST ADJACENT CEILING

- WALL SCHEDULE NOTES:**
- WALLS WITHOUT WALL TAGS ARE TO BE CONSTRUCTED BASED ON WALL CODE 1A, TYPICAL
 - THE FOLLOWING INTERIOR WALL FINISH SUBSTRATES ARE TO BE PROVIDED IN LIEU OF GYPSUM BOARD (IN LIKE THICKNESSES):
 - MOISTURE RESISTANT GYPSUM BOARD ON FIXTURE SIDE OF ALL PLUMBING WALLS
 - CEMENTITIOUS TILE BACKER BOARD ON SIDE OF WALLS SCHEDULED TO RECEIVE TILE
 - ABUSE RESISTANT GYPSUM BOARD WHERE INDICATED ON FLOOR PLAN
 - WALL TYPE INDICATED SHALL CONTINUE OVER DOOR OPENINGS AND OVER/BELOW GLAZED OPENINGS OR WINDOWS AS REQUIRED. COORDINATE WITH FRAME DETAILS.
 - WALLS IDENTIFIED AS "ACOUSTICAL WALL" SHALL COMPLY WITH THE FOLLOWING:
 - FILL ALL WALL PENETRATIONS WITH BATT INSULATION AND SEAL WITH ACOUSTICAL SEALANT
 - STAGGER ELECTRICAL BOXES A MINIMUM OF 16"
 - APPLY ACOUSTICAL SEALANT AT PERIMETER OF STUD WALLS
 - AT CMU WALLS HAVING GYPSUM BOARD ON FURRING, GYP BD FASTENERS MUST NOT CONTACT MASONRY
 - WALL TYPES LISTED HEREIN WITH AN STC RATING ARE CONSIDERED TO BE "ACOUSTICAL WALLS."
 - STC RATINGS INDICATED HEREIN ARE DERIVED FROM THE LABORATORY TEST INDICATED IN THE "DESIGN REFERENCE" COLUMN. TEST SOURCES ARE AS FOLLOWS:
 - USG, SA, BBN: UNITED STATES GYPSUM
 - NGC: NATIONAL GYPSUM COMPANY
 - KAL: KODARAS ACOUSTICAL LABS
 - TL: ETL-SEAKO
 - CONSTRUCT ACOUSTIC WALLS TO COMPLY WITH THE FOLLOWING REQUIREMENTS:
 - FILL ALL WALL PENETRATIONS W/ BATT INSULATION AND SEAL W/ ACOUSTICAL SEALANT.
 - STAGGER ELECTRICAL BOXES A MINIMUM OF 16"
 - APPLY ACOUSTIC SEALANT AT PERIMETER OF STUD WALLS.
 - GYPSUM BOARD FASTENERS MUST NOT CONTACT MASONRY ON CMU WALLS HAVING GYP BD ON FURRING STRIPS.

INTERIOR WALL TYPES							
TAG	PLAN SECTION	DESCRIPTION	ACOUSTIC WALLS		FIRE WALLS		
			STC	DETAIL	RATING	DETAIL	
1	[Diagram]	3-5/8" (U.N.O.) METAL STUDS AT 16" O.C. WITH 5/8" GYPSUM BOARD ON BOTH SIDES	-	-	-	-	
2	[Diagram]	3-5/8" (U.N.O.) METAL STUDS AT 16" O.C. WITH 5/8" TYP "X" GYPSUM BOARD ON BOTH SIDES	-	-	1 HR	2/A0.2	
3	[Diagram]	3-5/8" (U.N.O.) METAL STUDS AT 16" O.C. WITH 5/8" GYPSUM BOARD ON ONE SIDE	-	-	-	-	
4	[Diagram]	3-5/8" (U.N.O.) METAL STUDS AT 16" O.C. WITH 5/8" GYPSUM BOARD ON BOTH SIDES WITH BATT INSULATION	49	SA-870717	-	3/A0.2	
5	[Diagram]	1" RIGID INSULATION WITH 1 5/8" METAL STUDS (U.N.O.) AT 16" O.C. WITH 5/8" GYPSUM BOARD ON ONE SIDE	-	-	-	-	
6	[Diagram]	-	-	-	-	-	
7	[Diagram]	8" CMU (U.N.O.)	-	-	-	-	
8	[Diagram]	8" CMU (U.N.O.)	50	TL-86-356	1 HR	1/A0.2	
9	[Diagram]	8" CMU (U.N.O.) WITH 5/8" GYPSUM BOARD ON 1 5/8" METAL STUDS (U.N.O.) AT 16" O.C. ON ONE SIDE	-	-	-	-	
10	[Diagram]	8" CMU (U.N.O.) WITH 5/8" GYPSUM BOARD ON 1 5/8" METAL STUDS AT 16" O.C. ON ONE SIDE ON 1" RIGID INSULATION	-	-	-	-	
11	[Diagram]	8" CMU (U.N.O.) WITH 1" RIGID INSULATION ON ONE SIDE AND 5/8" GYPSUM BOARD ON 5/8" METAL STUDS AT 16" O.C. ON BOTH SIDES	-	-	-	-	
12	[Diagram]	8" CMU (U.N.O.) WITH 5/8" GYPSUM BOARD ON 1 5/8" METAL STUDS AT 16" O.C. ON BOTH SIDES	-	-	-	-	
13	[Diagram]	8" CMU (U.N.O.) WITH 5/8" CEMENT PLASTER ON ONE SIDE	-	-	-	-	
14	[Diagram]	ACOUSTICAL WALL 5/8" SHEETROCK BRAND FIRECODE C CORE GYPSUM PANELS - 6" 25 GAUGE STEEL STUDS 16" O.C. - 1" THERMAFIBER SAFB-PC-1 CHANNEL OR EQUIVALENT ONE SIDE. SPACED 24" O.C. - DOUBLE LAYER GYPSUM PANELS SCREW ATTACHED TO CHANNEL. 2 LAYERS SCRIB ATTACHED TO STEEL STUDS - FACE LAYER JOINTS FINISHED, WITH 1" TECTUM PANELS	-	-	-	-	

APPLICABLE CODES

BUILDING CODE: FLORIDA BUILDING CODE 2017 (6TH EDITION)
 ACCESSIBILITY CODE: FBC 2017, ACCESSIBILITY
 FIRE SAFETY CODE: FLORIDA FIRE PREVENTION CODE 2017

BUILDING CATEGORIZATION & PHYSICAL PROPERTIES

OCCUPANCY CLASSIFICATION	FLORIDA BUILDING CODE	FLORIDA FIRE PREVENTION CODE
	CHAPTER 3, SECTION 302	NFPA 101, CHAPTER 6
	A-1	ASSEMBLY
CONSTRUCTION TYPE	FLORIDA BUILDING CODE	FLORIDA FIRE PREVENTION CODE
	CHAPTER 6	NFPA 220, CHAPTER 4, TABLE 4.1.1
	IB	II

WIND SPEED DESIGN CRITERION

WIND SPEED CLASSIFICATION EQUAL TO OR EXCEEDING 120 MPH QUALIFIES PROJECT FOR WIND BORNE DEBRIS REGION	FLORIDA BUILDING CODE	FLORIDA FIRE PREVENTION CODE	PROVIDED
	CHAPTER 16, SECTION 1609	N/A	REFER TO "S" DWGS

BUILDING PHYSICAL PROPERTIES

ALLOWABLE HEIGHT	FLORIDA BUILDING CODE	FLORIDA FIRE PREVENTION CODE	PROVIDED
	CHAPTER 5	N/A	51'-6"
ALLOWABLE NUMBER OF STORIES		N/A	2
ALLOWABLE AREA PER FLOOR	34,000	N/A	20,923
SPRINKLER SYSTEM			YES

FIRE RATING REQUIREMENTS

BUILDING COMPONENTS	FLORIDA BUILDING CODE	NFPA 101 - LIFE SAFETY CODE	NFPA 220	PROVIDED
	TABLES 508.4, 601.602, & 1020.1	7.1.1.1 & 6.1.14.1	TABLE 4.1.1	
STRUCTURAL FRAME	0	0	0	0
BEARING WALLS - EXTERIOR	0	0	0	0
BEARING WALLS - INTERIOR	0	0	0	0
NON-BEARING WALLS - EXTERIOR	0	0	0	0
NON-BEARING WALLS - INTERIOR	0	0	0	0
FLOOR CONSTRUCTION	0	0	0	0
ROOF CONSTRUCTION	0	0	0	0
OCCUPANCY SEPARATION	N	N	N	N
CORRIDORS	0	0	0	0

FIRE EXTINGUISHER REQUIREMENTS

FIRE EXTINGUISHER COMPONENT	FLORIDA BUILDING CODE	FLORIDA FIRE PREVENTION CODE	PROVIDED
		NFPA 10, TABLE 6.2.1.1 LIGHT HAZARD OCCUPANCY	
MAXIMUM FLOOR AREA PER UNIT OF A	N/A	3000 SF	YES
MAXIMUM FLOOR AREA PER EXTINGUISHER	N/A	11,250 SF	YES
MAXIMUM TRAVEL DISTANCE	N/A	75'	YES

EXITING REQUIREMENTS

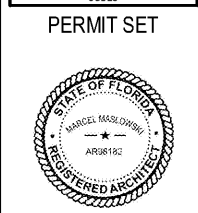
EXITING COMPONENT	FLORIDA BUILDING CODE	NFPA 101 - LIFE SAFETY CODE
COMMON PATH OF TRAVEL TO AN EXIT	6" [1008.2.1]	75" [X.2.5]
MAXIMUM DEAD END CORRIDOR	20' [1020.4]	20' [X.2.5]
MAXIMUM TRAVEL DISTANCE TO EXIT	250' [TABLE 1017.2]	250' [X.2.6]
MINIMUM CORRIDOR WIDTH	44" [1020.2]	36" [7.9.4]
MINIMUM CLEAR OPNG OF EXIT DOORS	32" [1010.1.1]	32" [7.2.1.2.3.2]
MINIMUM STAIR WIDTH	44" [1011.2]	36" [TABLE 7.2.2.2.1(a)]

FLEISCHMAN ARCHITECTS
 ARCHITECTURE : PLANNING : INTERIORS
 304 HYDE PARK AVENUE, SUITE 300
 TAMPA, FLORIDA 33606
 PHONE (813) 725-8800
 FAX (813) 251-1984
 REGISTRATION NUMBER: FL 000107
 WWW.FLEISCHMANARCHITECTS.COM

**HILLSBOROUGH COUNTY
 NEW TAMPA PERFORMING ARTS
 CENTER**
 8550 HUNTERS VILLAGE RD.
 TAMPA FL, 33647

THIS DESIGN AND DRAWING IS THE SOLE PROPERTY OF FLEISCHMANGARCIA. NO PART OF THIS WORK MAY BE REPRODUCED WITHOUT PRIOR WRITTEN PERMISSION FROM FLEISCHMANGARCIA.

I CERTIFY TO THE BEST OF MY KNOWLEDGE THAT THESE DRAWINGS COMPLY WITH ALL RELEVANT BUILDING CODES.



MARCEL MASLOWSKI
AR98182

FGA PROJECT NUMBER
19048

ISSUE DATE
04-15-2020

REVISIONS

NO.	DATE	NOTES

SHEET NAME

BUILDING DATA AND WALL TYPES

SHEET NUMBER
G0.03