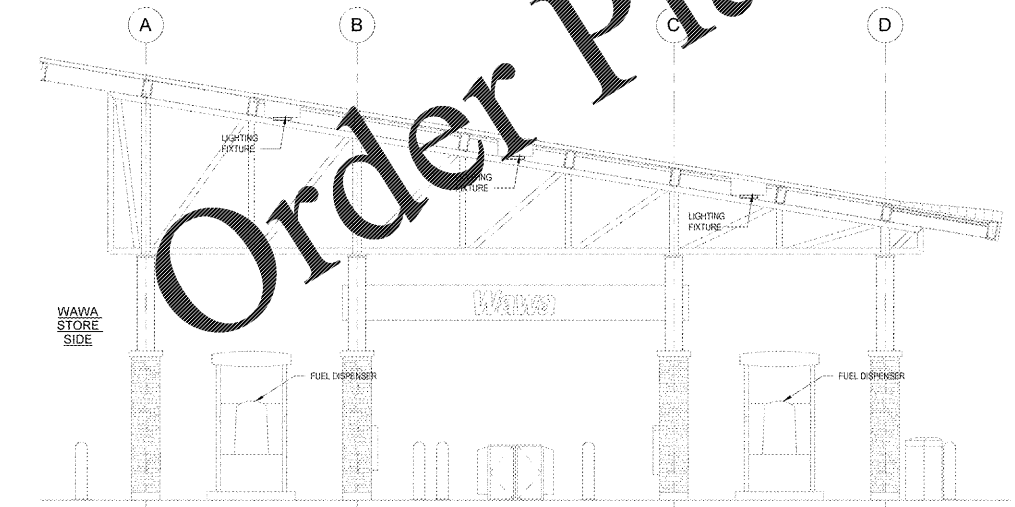


1 CANOPY ELECTRICAL REFLECTED CEILING PLAN
CE1
1/4" = 1'-0"

Lighting Fixture Schedule						
TYPE	MANUF	CATALOG NO.	QUANT	WATTS / LAMP	LAMPS / FIXTURE	NOTES
FD	LED - DECK MOUNT - SLOPED ADAPTOR		18	114 W		REF: 11

ALL LIGHT FIXTURES AND LAMPS SUPPLIED BY WAWA, INSTALLED BY G.C.
COORDINATE FIXTURE COUNT, LOCATIONS AND LAMP OUTPUT WITH SITE LIGHTING ENGINEER'S DRAWINGS



2 CANOPY SIDE ELEVATION
CE1
1/4" = 1'-0"

- ELECTRICAL NOTES**
- ALL FIXTURES AND COMPONENTS SHALL BE GROUNDED BY A SEPARATE #10 GROUND WIRE.
 - PETROLEUM CONTRACTOR TO PULL WIRING FOR INTERCOM AT CANOPY (SUPPLIED BY OTHERS).
 - THE CONDUIT FOR THE 'FD' FIXTURES TO RUN ALONG THE GUTTER PAN AND RUN TO THE FIXTURES IN THE FLUTES OF THE DECKING. NO CONDUIT SHOULD BE VISIBLE FROM BELOW THE CANOPY.
 - FOR DISPENSER DATA, FUEL-TANK MONITOR SENSOR, AND INTERCOM/MUSIC PROWIRE CONDUCTORS AND CONNECTIONS AS REQUIRED. COORDINATE WITH WAWA CONSTRUCTION MANAGER.
 - NOT USED.
 - ELECTRICAL CONTRACTOR TO COORDINATE WITH PETROLEUM CONTRACTOR AND GENERAL CONTRACTOR TO MAKE SURE THAT SEAL OFF FITTINGS AS REQUIRED ARE PROVIDED FOR CONDUITS ENTERING THE FUEL DISPENSERS AND THAT THE ELECTRICAL INSTALLATION AT THE GAS CANOPY AND FUEL TANKS IS IN ACCORDANCE WITH NEC ARTICLE 514.
 - FOR BRANCH CIRCUITS OUT TO CANOPY AREA, IF CIRCUIT LENGTH EXCEEDS 100 FEET WIRE CONDUIT MUST BE SIZED PER NEC 314.141.1 AND 1.2 (FLOOR ONLY).
 - LIGHT FIXTURES PROVIDED BY WAWA, G.C. TO COORDINATE INSTALLATION OF CONDUIT, WIRING AND FINAL CONNECTION WITH E.C. AND CANOPY VENDOR.
 - WAWA G.C. SHALL E.C. TO VERIFY EXACT LOCATION WITH G.C. AND ARCHITECTURAL DRAWINGS E.C. TO RUN WIRING, CONDUIT AND CONNECT TO LOCAL CIRCUITRY.

TANKS AND CANOPY CONDUITS AND CONDUCTORS NOTE:

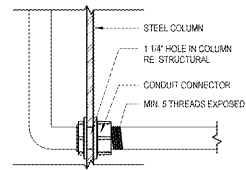
THE GENERAL CONTRACTOR SHALL FURNISH AND INSTALL ALL CONDUIT, ASSOCIATED FITTINGS AND WIRE NECESSARY TO PROVIDE A COMPLETE ELECTRICAL SYSTEM FOR THE GAS CANOPY, FUEL TANKS, MUSIC AND INTERCOM SYSTEM.

HOWEVER, THE FOLLOWING CONDUIT SHALL BE PROVIDED AND INSTALLED BY THE CONTRACTOR INDICATED BELOW.

FUEL TANKS
PETROLEUM CONTRACTOR SHALL FURNISH AND INSTALL THE CONDUIT FROM THE EDGE OF THE FUEL TANK CONCRETE PAD AND TERMINATE AT THE TANK EQUIPMENT.

GAS CANOPY
PETROLEUM CONTRACTOR SHALL FURNISH AND INSTALL THE CONDUIT FROM THE EDGE OF THE CONCRETE CANOPY PAD TO THE BASE OF THE CANOPY COLUMNS WHERE THEY WILL MAKE A THREADED CONNECTION. REFER TO DETAIL ACE1 CANOPY FABRICATOR SHALL FURNISH AND INSTALL THE THREADED CONNECTOR (MIN. 5 EXPOSED THREDS) AT THE BASE OF THE CANOPY COLUMN AND CONTINUE UP THROUGH THE COLUMN TO A SEAL OFF AND 1/2" X 2" THIN CONTINUE WITH RIGID CONDUIT TO THE BOTTOM OF THE CANOPY WHERE IT WILL TRANSITION INTO SEAL TIGHT CONDUIT AND TERMINATE AT THE FRONT ROW OF LIGHTS. G.C. SHALL CONNECT INTO THE FRONT ROW OF LIGHTS AND COMPLETE THE ELECTRICAL CANOPY LIGHTING.

PETROLEUM CONTRACTOR SHALL ALSO INSTALL THE CONDUIT FROM THE EDGE OF THE CONCRETE CANOPY PAD TO THE TERMINATION POINT FOR THE MUSIC AND INTERCOM SYSTEMS.



4 THREADED CONNECTION
CE1
3/8" = 1'-0"

GASOLINE CONDUIT REQUIREMENTS:

(1) 1" GRG TO COLUMN A OR C AS DICTATED BY FUEL COURT LAYOUT (SEE SHEET CE1)

(1) 1" GRG TO CANOPY COLUMN FOR LIGHTING (COLUMN FURTHEST FROM STORE) - COLUMN B (SEE SHEET CE1 FOR COUNT)

(4) 3/4" GRG TO EACH DISPENSER (1 POWER, 1 DATA, 1 MUSIC/INTERCOM, 1 FUEL-TANK MONITOR SENSOR)

(2) 1" GRG TO EACH TANK STP COMPARTMENT SLUMP (1 POWER, 1 DATA)

(1) 3/4" GRG TO EACH TANK SLUMP (FUEL-TANK MONITOR MAGNETOSTRICTIVE PROBE AND FUEL-TANK MONITOR SENSOR)

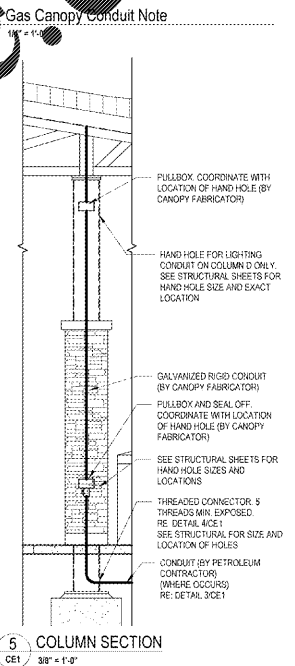
(1) 3/4" GRG TO EACH TANK MULTI-PORT CONTAINMENT (FUEL-TANK MONITOR MULTI-PORT FILL SLUMP)

(1) 1" GRG TO EACH TANK (FUEL-TANK MONITOR BURN-IN INTERSTITIAL RESISTANCE)

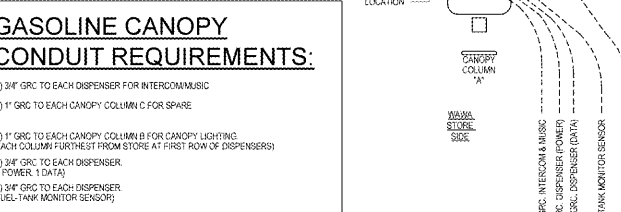
(1) 1" GRG TO OVERFILL ALARM (ON VENT STACK)

(1) 1" GRG TO EACH TANK (SEE NOTE 1)

(1) 1" GRG TO E-STOP AT STORE END OF CANOPY (SEE NOTE 1)



5 COLUMN SECTION
CE1
3/8" = 1'-0"



3 CANOPY CONDUIT LOCATIONS
CE1
1/2" = 1'-0"

Order Plans @ WWW.LDILine.com

1925 Prospect Ave.
Orlando, FL 32814
P (407) 661-9100
F (407) 661-9101
www.lpi.com



CLIENT NAME
WAWA
280 WEST BALTIMORE PIKE
WAWA, PENNSYLVANIA 19063

PROJECT NAME
WAWA STACKED 6 GAS CANOPY 2019.01 STORE 5351-CMM
1094 EDGEWOOD AVE.
JACKSONVILLE, FL 32254

No.	Description	Date
1	PRELIMINARY	09/09/2020
2	REVISED SET	09/10/2020
3	REVISED SET	09/24/2020

PROJECT NO.
217570

DATE
06-23-2018

DRAWN
WAWA

CHECKED
J.B.

CE1

ELECTRICAL CANOPY PLANS, DETAILS, SCHEDULES