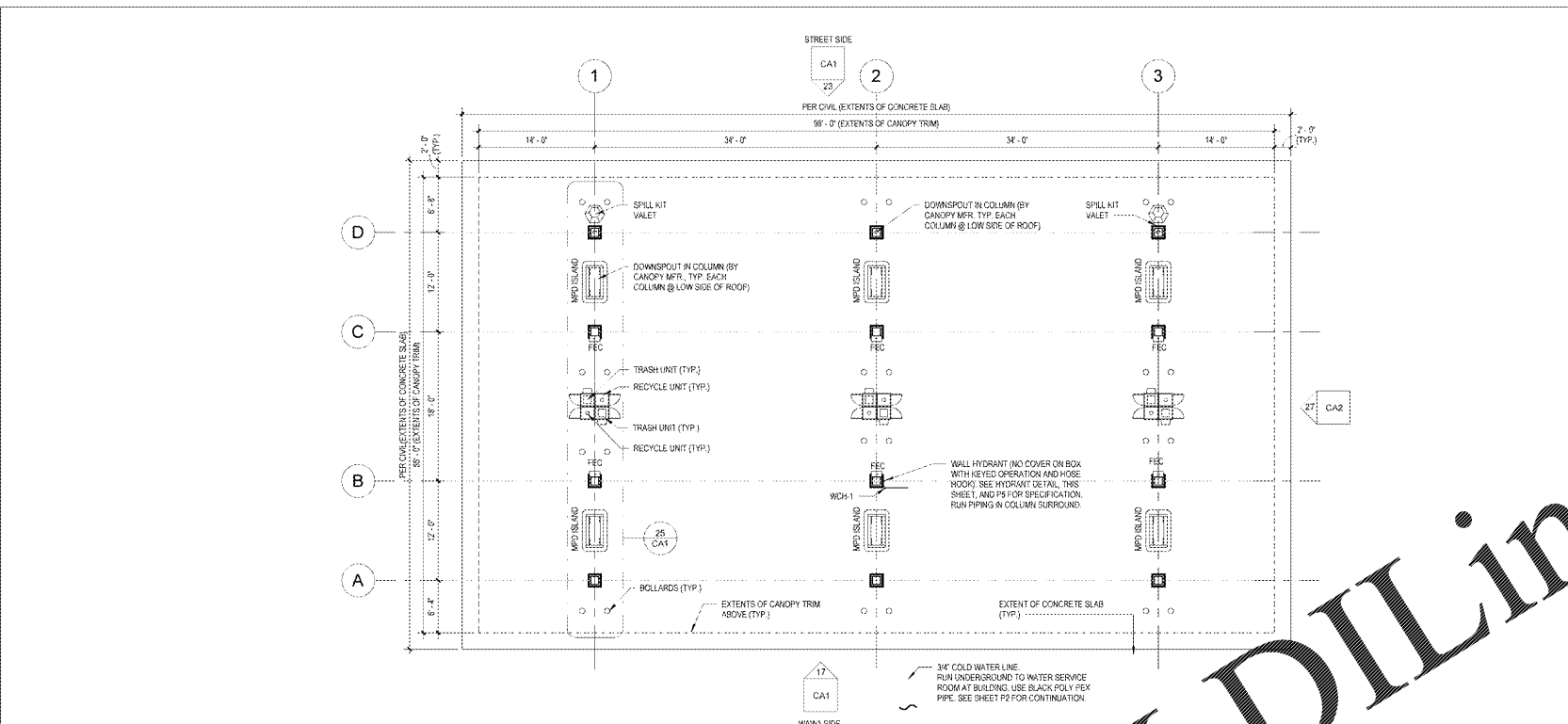
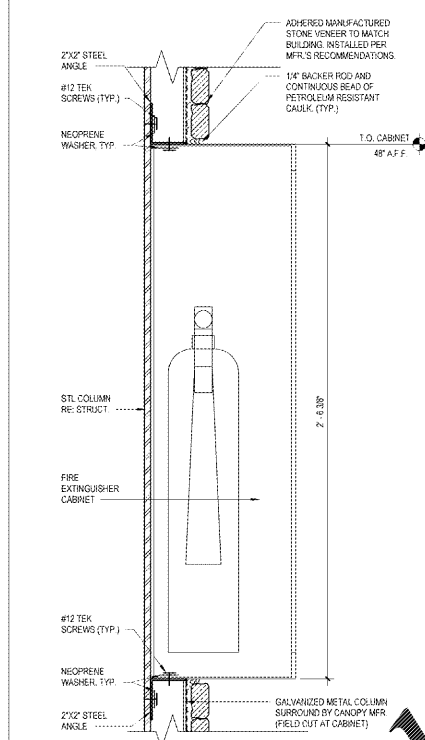


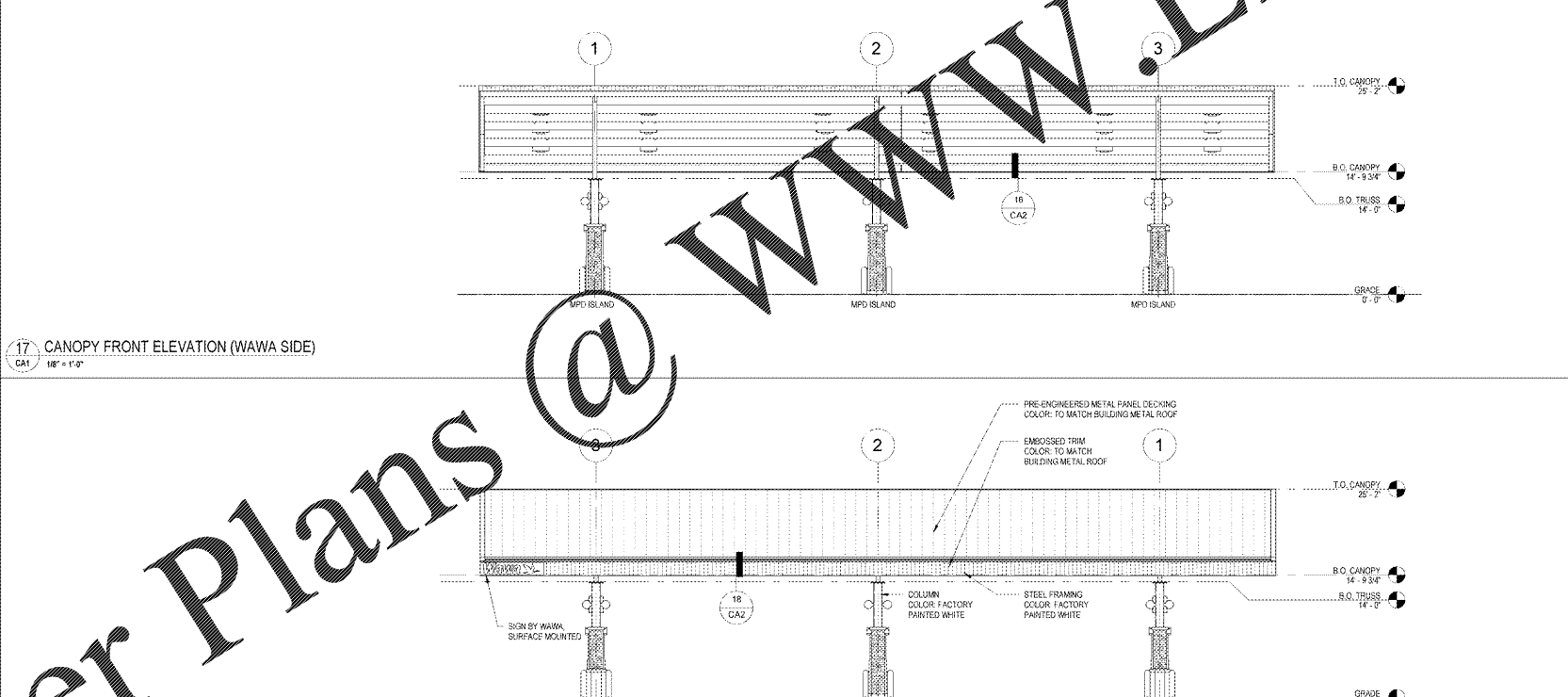
12 COLUMN DETAIL
CA1 1/2" x 1'-0"



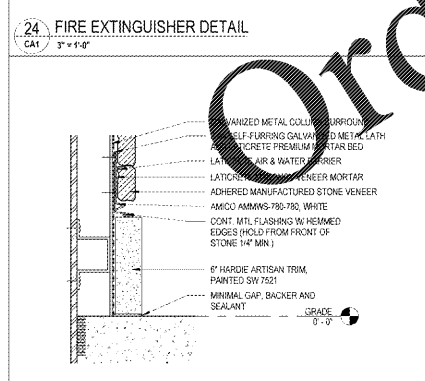
11 CANOPY FLOOR PLAN
CA1 1/8" x 1'-0"



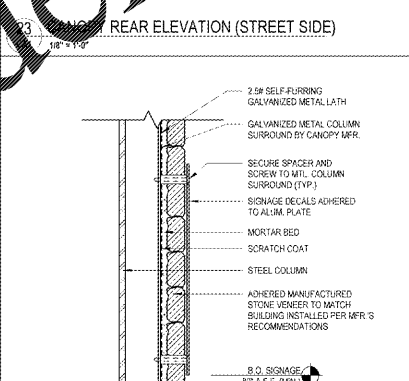
17 CANOPY FRONT ELEVATION (WAWA SIDE)
CA1 1/8" x 1'-0"



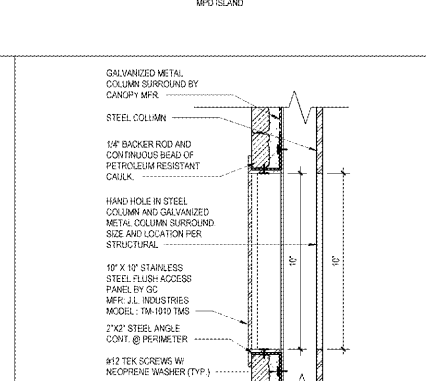
16 CANOPY REAR ELEVATION (STREET SIDE)
CA1 1/8" x 1'-0"



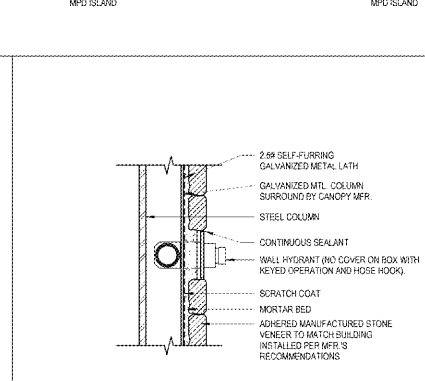
24 FIRE EXTINGUISHER DETAIL
CA1 3/4" x 1'-0"



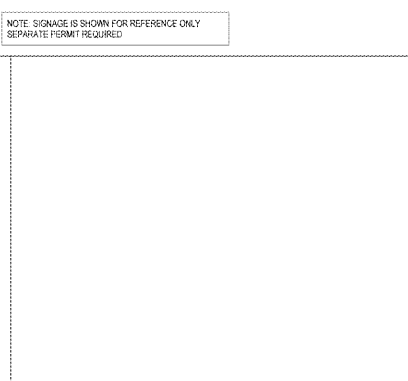
29 FIRE EXTINGUISHER SIGN MOUNTING DETAIL
CA1 3/4" x 1'-0"



28 ACCESS PANEL DETAIL
CA1 3/4" x 1'-0"



27 HYDRANT DETAIL
CA1 3/4" x 1'-0"

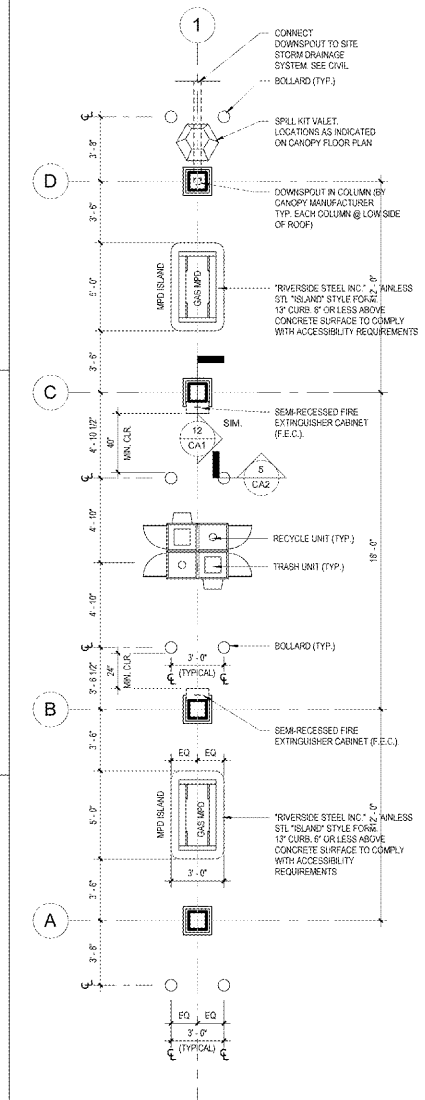


25 GAS ISLAND DETAIL
CA1 1/4" x 1'-0"

GENERAL NOTES:

- ALL WORK SHALL COMPLY WITH THE FLORIDA BUILDING CODE 6TH EDITION (2017), THE FLORIDA FIRE PROTECTION CODE 6TH EDITION (2011), 2012 NFPA 30A CODE FOR MOTOR FUEL DISPENSING FACILITIES AND REPAIR GARAGES, AND 2013 NFPA 10 STANDARD FOR PORTABLE FIRE EXTINGUISHERS. SEE COVER SHEET FOR DETAILED CODE INFORMATION.
- FUEL DISPENSING SYSTEMS (NFPA 30A & 7) EMERGENCY ELECTRICAL DISCONNECTS SHALL BE PROVIDED WITH ONE OR MORE CLEARLY IDENTIFIED EMERGENCY SHUT OFF DEVICES OR ELECTRICAL DISCONNECTS. SUCH DEVICES OR DISCONNECTS SHALL BE INSTALLED IN APPROVED LOCATIONS BUT NOT LESS THAN 20 FEET OR MORE THAN 100 FEET FROM THE FUEL DISPENSING DEVICES THAT THEY SERVE.
- FIRE EXTINGUISHER CABINETS (F.E.C.) SHALL BE STAINLESS STEEL SURFACE MOUNTED AS MANUFACTURED BY J.L. INDUSTRIES, COSMOPOLITAN SERIES, MODEL #2033, WITH FULL CLEAR ACRYLIC GLAZING ON DOOR. FIRE EXTINGUISHER CABINETS ARE SUPPLIED BY WAWA AND INSTALLED BY GENERAL CONTRACTOR, ONE PER MFD ISLAND. SEE DETAILS THIS SHEET FOR REQUIRED MOUNTING HEIGHTS.
- FIRE EXTINGUISHERS SHALL HAVE A MINIMUM UL RATING OF A-90-B-C (HIGH FLOW). FIRE EXTINGUISHERS TO COMPLY WITH 2017 NFPA 10 CLASS B SPECIAL HAZARD FIRE PROTECTION RECOMMENDATIONS. FIRE EXTINGUISHERS ARE SUPPLIED BY WAWA AND INSTALLED BY PETROLEUM CONTRACTOR, ONE PER MFD ISLAND.
- FIRE EXTINGUISHER SIGNS PROVIDED AND INSTALLED BY WAWA. SEE DETAIL THIS SHEET FOR REQUIRED MOUNTING HEIGHTS.
- WARNING SIGNS SHALL BE PROVIDED BY WAWA AND INSTALLED BY THE PETROLEUM CONTRACTOR AT EACH MFD ISLAND. WARNING SIGNS (2017 FPFC 1-42.7.3.3 AND 2012 NFPA 30A 5.1.2.6) SHALL INCLUDE BUT NOT BE LIMITED TO:
 - NO SMOKING
 - STOP ENGINE
 - UNLAWFUL TO DISPENSE GASOLINE INTO UNAPPROVED CONTAINERS
- EMERGENCY INSTRUCTIONS (2017 FPFC 1-42.7.3.3 AND 2012 NFPA 30A 5.1.2.6) SHALL BE PROVIDED BY WAWA AND INSTALLED BY THE PETROLEUM CONTRACTOR. SIGNS SHALL BE FULLY PLACED IN THE DISPENSER AREA, AND SHALL INCORPORATE THE FOLLOWING EMERGENCY INSTRUCTIONS:
 - EMERGENCY INSTRUCTIONS IN ENGLISH AND SPANISH
 - USE EMERGENCY STOP
 - REPORT ACCIDENT OR CALLING (SPECIFY FIRE NUMBER, REPORT LOCATION)
- LOCATION OF TRASH UNITS AND RECYCLE UNITS SHOWN AS SHOWN ON FLOOR PLAN. LEVEL RECEPTACLES WITH ANCHOR TO CONCRETE SURFACE USING (2) 5/8" X 3/4" WEDGE ANCHORS PER UNIT. UNITS SHALL BE WASHED AND INSTALLED BY WAWA.
- SPILL KIT VALET SHALL BE AS SHOWN ON FLOOR PLAN. ANCHOR TO CONCRETE SURFACE WITH ANCHOR BOLTS AND WING NUT FASTENERS. SPILL KIT VALETS ARE SUPPLIED BY WAWA AND INSTALLED BY PETROLEUM CONTRACTOR.
- IF THIS PERMIT IS ACCEPTED OR REQUIRED WITH WAWA REAL ESTATE ENGINEER AND PROJECT MANAGER, SEE SHEET 021 ELECTRICAL CANOPY PLANS, DETAILS, AND SCHEDULES FOR MISC. REQUIREMENTS. MISC. SHALL BE INSTALLED BY THE PETROLEUM CONTRACTOR.
- VERIFY CANOPY CONFIGURATION ON FINAL SITE PLAN.
- ALL METAL AND ALUMINUM TRIM SHALL MATCH ATAS #26 WHITE UNLESS NOTED OTHERWISE (J.N.G.).
- ALL PETROLEUM EQUIPMENT INCLUDING PUMPS AND TANKS, WILL BE UNDER A SEPARATE PERMIT SUBMITTED BY THE PETROLEUM CONTRACTOR.

STATEWIDE PRODUCT APPROVAL SUBMITTAL			
MANUFACTURER	PRODUCT CATEGORY	APPROVAL NUMBER / SEQ #	PRODUCT MODEL # OR NAME
METALWORKS LLC	ROOFING	NDA #15-051629 (EXP 05-15-2021)	6.03P (MIN) GALVALUME PANEL FOR CANOPY



25 GAS ISLAND DETAIL
CA1 1/4" x 1'-0"

1925 Prospect Ave.
Orlando, FL 32814
P (407) 661-9100
F (407) 661-9101
www.c-p.com

Cohn & Peterson
Architects Engineers Planners

CLIENT NAME
WAWA
260 WEST BALTIMORE PIKE
WAWA, PENNSYLVANIA 15063

PROJECT NAME
WAWA STACKED 6 GAS CANOPY 2019.01 STORE 5351-CMM
1004 EDGEWOOD AVE.
JACKSONVILLE, FL 32254

SHEET TITLE
ARCHITECTURAL CANOPY PLAN, ELEVATIONS, AND DETAILS

No.	Revision	Description	Date
1	ISSUED FOR PERMIT	REV 2/10/21	02/10/2021
2	REVISED	REV 2/10/21	02/10/2021
3	REVISED	REV 2/10/21	02/10/2021
4	REVISED	REV 2/10/21	02/10/2021
5	REVISED	REV 2/10/21	02/10/2021

PROJECT NO. 2115780
DATE 06-23-2018
WAWA
CHECKED
OWNER

CA1