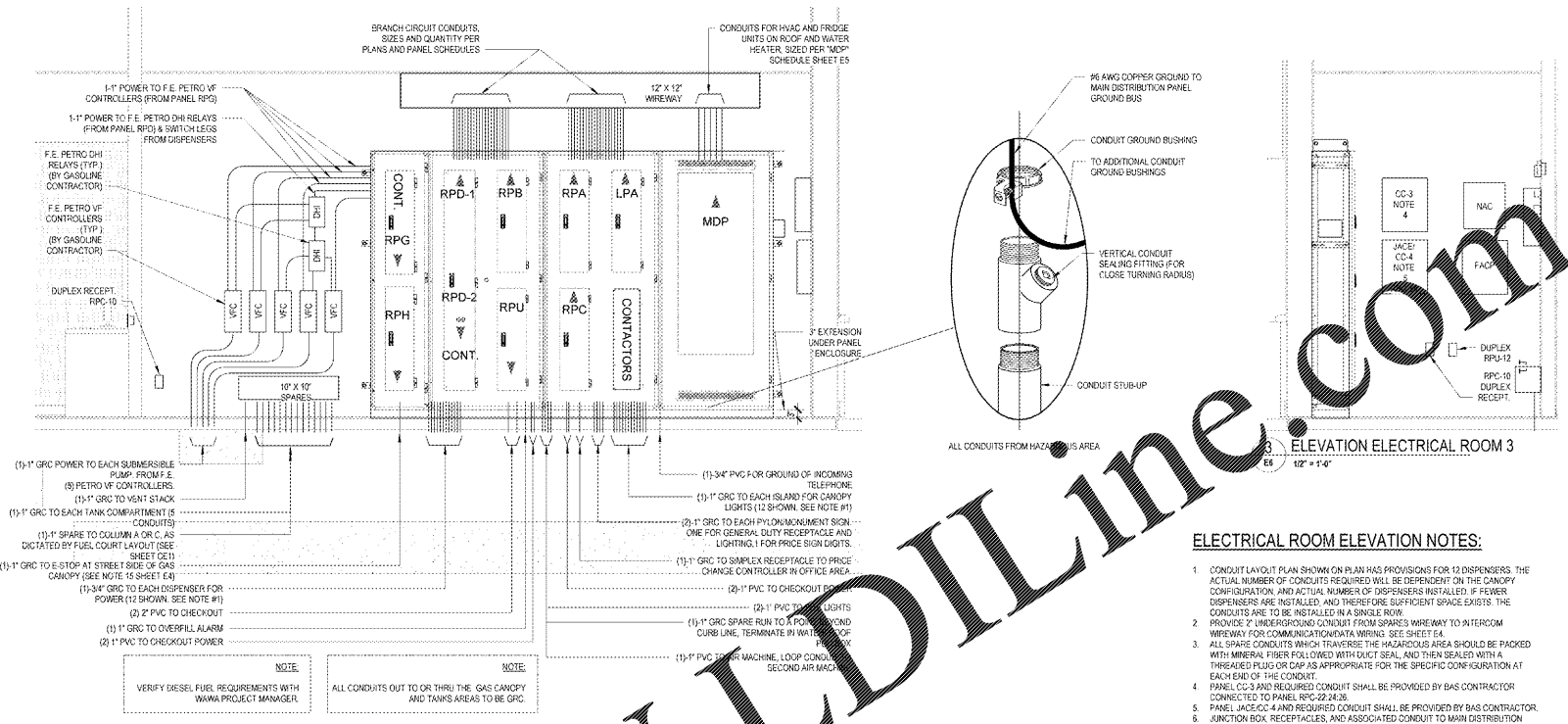
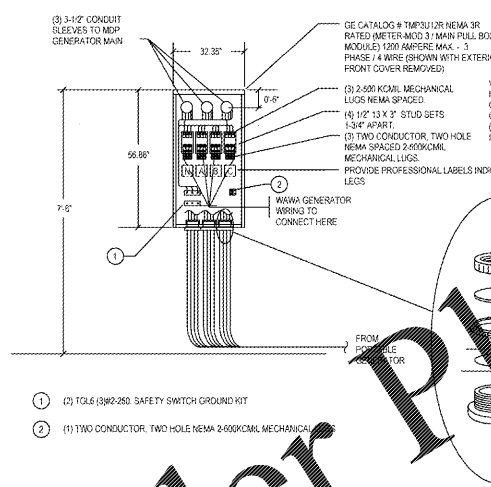


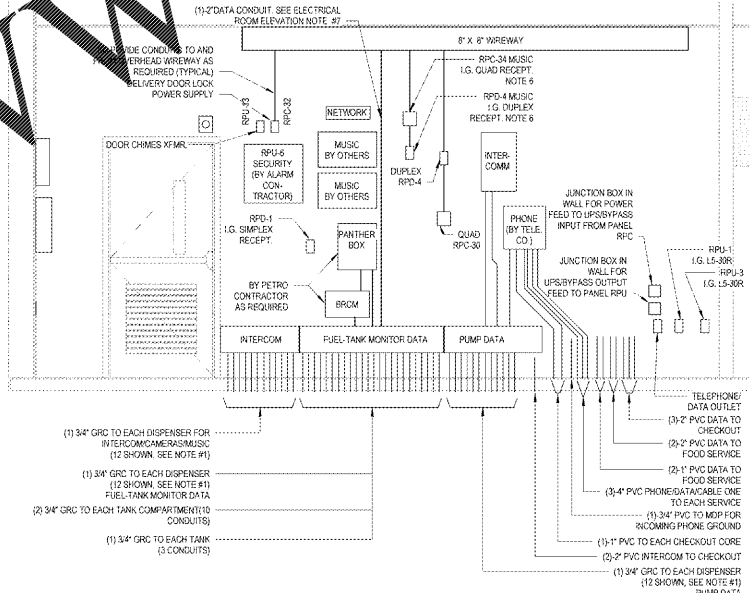
1 ELECTRICAL ROOM - PLAN
E6 12' x 1'-0"



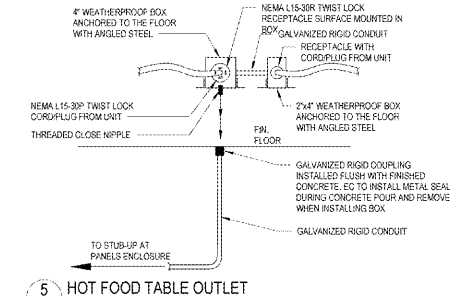
2 ELECTRICAL ROOM ELEVATION
E6 12' x 1'-0"



4 300KW CONNECTION DETAIL
E6 NOT TO SCALE



6 ELEVATION ELECTRICAL ROOM 4
E6 12' x 1'-0"



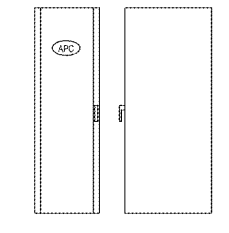
5 HOT FOOD TABLE OUTLET
E6 NOT TO SCALE

GASOLINE CONDUIT REQUIREMENTS:

- (1) 1" GRG SPARE TO COLUMN A OR C AS DICTATED BY FUEL COURT LAYOUT. (SEE SHEET CE1)
- (1) 1" GRG TO CANOPY COLUMN FOR LIGHTING. (COLUMN FURTHEST FROM STORE) - COLUMN B.
- (4) 3/4" GRG TO EACH DISPENSER. (1) POWER, 1 DATA, 1 MUSIC/INTERCOM, 1 FUEL-TANK MONITOR SENSOR)
- (2) 1" GRG TO EACH TANK STP CONTAINMENT SUMP. (F.E. PETRO POWER (1) POWER, 1 SPARE)
- (1) 3/4" GRG TO EACH TANK STP CONTAINMENT SUMP. (FUEL-TANK MONITOR INTERSTITIAL PRESSURE AND FUEL-TANK MONITOR SENSOR)
- (1) 3/4" GRG TO EACH TANK MULTIPORT CONTAINMENT RIMP. (FUEL-TANK MONITOR MULTI-PORT FILL SUMP)
- (1) 3/4" GRG TO EACH TANK (FUEL-TANK MONITOR BRINE INTERSTITIAL RESERVOIR)
- (1) 1" GRG TO OVERFILL ALARM. (ON VENT STACK)
- (1) 1" GRG TO VENT STACK (SPARE)
- (1) 1" GRG TO E-STOP AT STREET SIDE OF GAS CANOPY (SEE NOTE 15 ON SHEET E4)

BUILDING AUTOMATION SYSTEM (BAS)

GENERAL CONTRACTOR TO INSTALL WATER METERS FOR B.A.S. PER PLUMBING DRAWINGS P4 AND PROVIDE UNDERGROUND CONDUIT TO EQUIPMENT RACKS SHOWN ON DRAWING E21. B.A.S. REFRIGERATOR COMPANY INSTALLERS SHALL SUPPLY AND INSTALL B.A.S. AND CENTRAL WIRING PER CURRENT EDITION OF BUILDING AUTOMATION SYSTEM 2010 (LITE) MASTER.BLT NEW STORES B.A.S. MASTER SPECS BY HVAC CONCEPTS INC. AND AVAILABLE IN PLAN EXPRESS PROJECT FOLDER.



7 DATA CABINET DETAIL
E6 12' x 1'-0"

Order Plans @ WWW.LDILine.com

ELECTRICAL ROOM ELEVATION NOTES:

- 1. CONDUIT LAYOUT PLAN SHOWN ON PLAN HAS PROVISIONS FOR 12 DISPENSERS. THE ACTUAL NUMBER OF CONDUITS REQUIRED WILL BE DEPENDENT ON THE CANOPY CONFIGURATION AND ACTUAL NUMBER OF DISPENSERS INSTALLED. IF FEWER DISPENSERS ARE INSTALLED, AND THEREFORE SURPLUS SPACE EXISTS, THE CONDUITS ARE TO BE INSTALLED IN A SINGLE ROW.
- 2. PROVIDE 2" UNDERGROUND CONDUIT FROM SPARES WAREHOUSE TO INTERROOM WAREHOUSE FOR COMMUNICATIONS WIRING. SEE SHEET E4.
- 3. ALL SPARE CONDUITS WHICH TRAVERSE THE HAZARDOUS AREA SHOULD BE PACKED WITH MINERAL FIBER FOLLOWED WITH GUT SEAL AND THEN SEALED WITH A THREADED PLUG OR CAP AS APPROPRIATE FOR THE SPECIFIC CONFIGURATION AT EACH END OF THE CONDUIT.
- 4. PANEL CC-3 AND REQUIRED CONDUIT SHALL BE PROVIDED BY GAS CONTRACTOR CONNECTED TO PANEL RPC-22-24-26.
- 5. PANEL JACE/CC-4 AND REQUIRED CONDUIT SHALL BE PROVIDED BY GAS CONTRACTOR. JUNCTION BOX, RECEPTABLES, AND ASSOCIATED CONDUIT TO MAIN DISTRIBUTION PANEL SHALL BE PROVIDED BY ELECTRICAL CONTRACTOR. JUNCTION BOX SHALL BE SURFACE MOUNTED.
- 7. RUN 1/2" CONDUIT TO MANAGERS OFFICE. RUN CONDUIT DOWN INSIDE MANAGERS OFFICE WALL AND STUB-OUT AT FUEL TANK MONITOR EQUIPMENT LOCATION. ALSO, RUN 1" CONDUIT FROM MANAGERS OFFICE FUEL TANK MONITOR ABOVE CEILING TO PANEL RPH IN ELECTRICAL ROOM.
- 8. ALL CONDUITS RUNNING OUT TO CLASSIFIED AREAS SUCH AS THE GAS CANOPY AND TANKS AREA SHALL BE GRC. THE CONDUIT FOR ENTIRE RUN OF CONDUIT, CONDUITS TO OTHER AREAS SUCH AS MONITOR SIGNAL AND PUMP, ST. LIGHTING, ETC. MAY BE PVC.
- 9. PROVIDE A LABEL ON PANELS RPH AND RPS STATING "GASOLINE EQUIPMENT ONLY. DO NOT INSTALL ANY ADDITIONAL CIRCUITS".
- 10. PROVIDE A LABEL ON PANEL RPH STATING "EQUIPMENT ONLY. DO NOT INSTALL ANY ADDITIONAL CIRCUITS".

1925 Prospect Ave.
Orlando, FL 32814
P (407) 661-9100
F (407) 661-9101
www.e7.com

Chhab & Peterson
Architects Engineers Planners

CLIENT NAME
WAWA
280 WEST BALTIMORE PIKE
WAWA, PENNSYLVANIA 19063

PROJECT NAME
WAWA F85L 2019.01 STORE #6351 - CMM
1004 EDGEWOOD AVE.
JACKSONVILLE, FL 32254

No.	Revision	Schedule	Date
1	ISSUED FOR PERMITS		08/09/2020
2	REV. 2019.01		08/10/2020
3	PRELIMINARY SET		08/10/2020
4	REV. 2019.01		08/24/2020

PROJECT NO.	DATE	DESIGNER	CHECKED
212180	08-09-2020	WAWA	WAWA