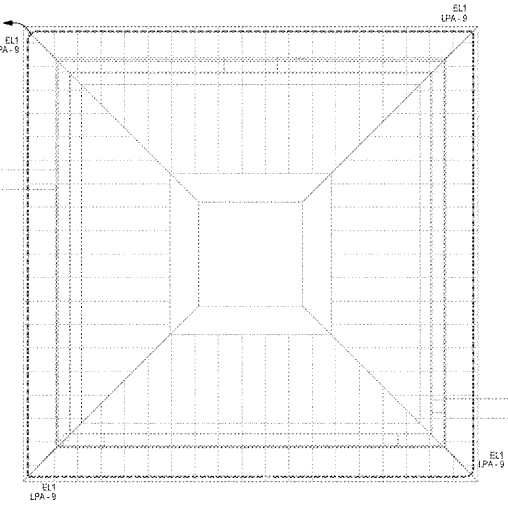
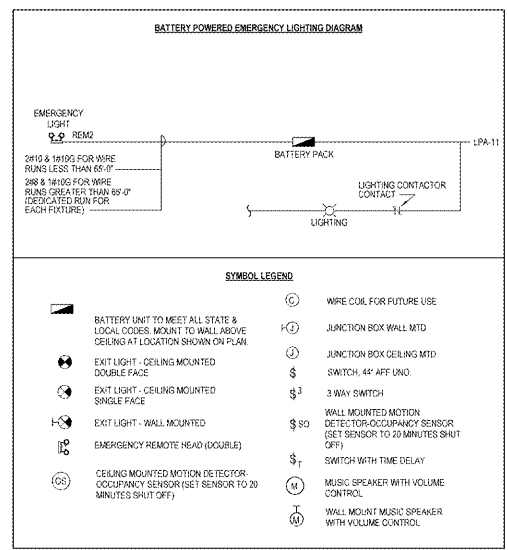


ENERGY CODE NOTE
 LIGHTING FOR THIS PROJECT HAS BEEN DESIGNED TO COMPLY WITH SECTION C405 OF THE FLORIDA BUILDING CODE - ENERGY CONSERVATION, 8TH EDITION 2017
 LIGHTING IN THE SELF SERVICE WALK-IN FRIDGE IS MONITORED BY SECURITY CAMERA AND IS A SECURITY AREA. OCCUPANCY SENSOR IS NOT REQUIRED IN THIS SPACE PER EXCEPTION 2 OF SECTION C405.2.2

LIGHTING FIXTURE SCHEDULE

| TYPE | SPECIFICATION |
|-------|---|
| DL1 | WALL MOUNTED LED WET LOCATION FIXTURE WITH GUARD, (FOR USE IN ROOF POCKET AND TRASH COMPACTING SEE DWG #E3) |
| DL2 | RECESSED 6" LED DOWNLIGHT DAMP LOCATION |
| DL3 | RECESSED 4" LED DOWNLIGHT DAMP LOCATION EMERGENCY BATTERY BACKUP |
| DL4 | RECESSED 6" LED DOWNLIGHT ADJUSTABLE LAMP ANGLE DAMP LOCATION |
| DL5 | RECESSED 4" LED DOWNLIGHT DAMP LOCATION 1 INCH TRIM RING |
| DL6 | RECESSED 6" LED DOWNLIGHT DAMP LOCATION EMERGENCY BATTERY BACKUP 1 INCH TRIM RING |
| DL7 | RECESSED 4" LED DOWNLIGHT DAMP LOCATION 1 INCH TRIM RING |
| DL8 | RECESSED 6" LED DOWNLIGHT DAMP LOCATION EMERGENCY BATTERY BACKUP 1 INCH TRIM RING |
| DL9 | RECESSED 4" LED DOWNLIGHT DAMP LOCATION EMERGENCY BATTERY BACKUP 1 INCH TRIM RING |
| DL10 | RECESSED 6" LED DOWNLIGHT DAMP LOCATION EMERGENCY BATTERY BACKUP 1 INCH TRIM RING |
| DL11 | RECESSED 4" LED DOWNLIGHT DAMP LOCATION EMERGENCY BATTERY BACKUP 1 INCH TRIM RING |
| DL12 | RECESSED 6" LED DOWNLIGHT DAMP LOCATION EMERGENCY BATTERY BACKUP 1 INCH TRIM RING |
| DL13 | RECESSED 4" LED DOWNLIGHT DAMP LOCATION EMERGENCY BATTERY BACKUP 1 INCH TRIM RING |
| DL14 | RECESSED 6" LED DOWNLIGHT DAMP LOCATION EMERGENCY BATTERY BACKUP 1 INCH TRIM RING |
| DL15 | RECESSED 4" LED DOWNLIGHT DAMP LOCATION EMERGENCY BATTERY BACKUP 1 INCH TRIM RING |
| DL16 | RECESSED 6" LED DOWNLIGHT DAMP LOCATION EMERGENCY BATTERY BACKUP 1 INCH TRIM RING |
| DL17 | RECESSED 4" LED DOWNLIGHT DAMP LOCATION EMERGENCY BATTERY BACKUP 1 INCH TRIM RING |
| DL18 | RECESSED 6" LED DOWNLIGHT DAMP LOCATION EMERGENCY BATTERY BACKUP 1 INCH TRIM RING |
| DL19 | RECESSED 4" LED DOWNLIGHT DAMP LOCATION EMERGENCY BATTERY BACKUP 1 INCH TRIM RING |
| DL20 | RECESSED 6" LED DOWNLIGHT DAMP LOCATION EMERGENCY BATTERY BACKUP 1 INCH TRIM RING |
| DL21 | RECESSED 4" LED DOWNLIGHT DAMP LOCATION EMERGENCY BATTERY BACKUP 1 INCH TRIM RING |
| DL22 | RECESSED 6" LED DOWNLIGHT DAMP LOCATION EMERGENCY BATTERY BACKUP 1 INCH TRIM RING |
| DL23 | RECESSED 4" LED DOWNLIGHT DAMP LOCATION EMERGENCY BATTERY BACKUP 1 INCH TRIM RING |
| DL24 | RECESSED 6" LED DOWNLIGHT DAMP LOCATION EMERGENCY BATTERY BACKUP 1 INCH TRIM RING |
| DL25 | RECESSED 4" LED DOWNLIGHT DAMP LOCATION EMERGENCY BATTERY BACKUP 1 INCH TRIM RING |
| DL26 | RECESSED 6" LED DOWNLIGHT DAMP LOCATION EMERGENCY BATTERY BACKUP 1 INCH TRIM RING |
| DL27 | RECESSED 4" LED DOWNLIGHT DAMP LOCATION EMERGENCY BATTERY BACKUP 1 INCH TRIM RING |
| DL28 | RECESSED 6" LED DOWNLIGHT DAMP LOCATION EMERGENCY BATTERY BACKUP 1 INCH TRIM RING |
| DL29 | RECESSED 4" LED DOWNLIGHT DAMP LOCATION EMERGENCY BATTERY BACKUP 1 INCH TRIM RING |
| DL30 | RECESSED 6" LED DOWNLIGHT DAMP LOCATION EMERGENCY BATTERY BACKUP 1 INCH TRIM RING |
| DL31 | RECESSED 4" LED DOWNLIGHT DAMP LOCATION EMERGENCY BATTERY BACKUP 1 INCH TRIM RING |
| DL32 | RECESSED 6" LED DOWNLIGHT DAMP LOCATION EMERGENCY BATTERY BACKUP 1 INCH TRIM RING |
| DL33 | RECESSED 4" LED DOWNLIGHT DAMP LOCATION EMERGENCY BATTERY BACKUP 1 INCH TRIM RING |
| DL34 | RECESSED 6" LED DOWNLIGHT DAMP LOCATION EMERGENCY BATTERY BACKUP 1 INCH TRIM RING |
| DL35 | RECESSED 4" LED DOWNLIGHT DAMP LOCATION EMERGENCY BATTERY BACKUP 1 INCH TRIM RING |
| DL36 | RECESSED 6" LED DOWNLIGHT DAMP LOCATION EMERGENCY BATTERY BACKUP 1 INCH TRIM RING |
| DL37 | RECESSED 4" LED DOWNLIGHT DAMP LOCATION EMERGENCY BATTERY BACKUP 1 INCH TRIM RING |
| DL38 | RECESSED 6" LED DOWNLIGHT DAMP LOCATION EMERGENCY BATTERY BACKUP 1 INCH TRIM RING |
| DL39 | RECESSED 4" LED DOWNLIGHT DAMP LOCATION EMERGENCY BATTERY BACKUP 1 INCH TRIM RING |
| DL40 | RECESSED 6" LED DOWNLIGHT DAMP LOCATION EMERGENCY BATTERY BACKUP 1 INCH TRIM RING |
| DL41 | RECESSED 4" LED DOWNLIGHT DAMP LOCATION EMERGENCY BATTERY BACKUP 1 INCH TRIM RING |
| DL42 | RECESSED 6" LED DOWNLIGHT DAMP LOCATION EMERGENCY BATTERY BACKUP 1 INCH TRIM RING |
| DL43 | RECESSED 4" LED DOWNLIGHT DAMP LOCATION EMERGENCY BATTERY BACKUP 1 INCH TRIM RING |
| DL44 | RECESSED 6" LED DOWNLIGHT DAMP LOCATION EMERGENCY BATTERY BACKUP 1 INCH TRIM RING |
| DL45 | RECESSED 4" LED DOWNLIGHT DAMP LOCATION EMERGENCY BATTERY BACKUP 1 INCH TRIM RING |
| DL46 | RECESSED 6" LED DOWNLIGHT DAMP LOCATION EMERGENCY BATTERY BACKUP 1 INCH TRIM RING |
| DL47 | RECESSED 4" LED DOWNLIGHT DAMP LOCATION EMERGENCY BATTERY BACKUP 1 INCH TRIM RING |
| DL48 | RECESSED 6" LED DOWNLIGHT DAMP LOCATION EMERGENCY BATTERY BACKUP 1 INCH TRIM RING |
| DL49 | RECESSED 4" LED DOWNLIGHT DAMP LOCATION EMERGENCY BATTERY BACKUP 1 INCH TRIM RING |
| DL50 | RECESSED 6" LED DOWNLIGHT DAMP LOCATION EMERGENCY BATTERY BACKUP 1 INCH TRIM RING |
| DL51 | RECESSED 4" LED DOWNLIGHT DAMP LOCATION EMERGENCY BATTERY BACKUP 1 INCH TRIM RING |
| DL52 | RECESSED 6" LED DOWNLIGHT DAMP LOCATION EMERGENCY BATTERY BACKUP 1 INCH TRIM RING |
| DL53 | RECESSED 4" LED DOWNLIGHT DAMP LOCATION EMERGENCY BATTERY BACKUP 1 INCH TRIM RING |
| DL54 | RECESSED 6" LED DOWNLIGHT DAMP LOCATION EMERGENCY BATTERY BACKUP 1 INCH TRIM RING |
| DL55 | RECESSED 4" LED DOWNLIGHT DAMP LOCATION EMERGENCY BATTERY BACKUP 1 INCH TRIM RING |
| DL56 | RECESSED 6" LED DOWNLIGHT DAMP LOCATION EMERGENCY BATTERY BACKUP 1 INCH TRIM RING |
| DL57 | RECESSED 4" LED DOWNLIGHT DAMP LOCATION EMERGENCY BATTERY BACKUP 1 INCH TRIM RING |
| DL58 | RECESSED 6" LED DOWNLIGHT DAMP LOCATION EMERGENCY BATTERY BACKUP 1 INCH TRIM RING |
| DL59 | RECESSED 4" LED DOWNLIGHT DAMP LOCATION EMERGENCY BATTERY BACKUP 1 INCH TRIM RING |
| DL60 | RECESSED 6" LED DOWNLIGHT DAMP LOCATION EMERGENCY BATTERY BACKUP 1 INCH TRIM RING |
| DL61 | RECESSED 4" LED DOWNLIGHT DAMP LOCATION EMERGENCY BATTERY BACKUP 1 INCH TRIM RING |
| DL62 | RECESSED 6" LED DOWNLIGHT DAMP LOCATION EMERGENCY BATTERY BACKUP 1 INCH TRIM RING |
| DL63 | RECESSED 4" LED DOWNLIGHT DAMP LOCATION EMERGENCY BATTERY BACKUP 1 INCH TRIM RING |
| DL64 | RECESSED 6" LED DOWNLIGHT DAMP LOCATION EMERGENCY BATTERY BACKUP 1 INCH TRIM RING |
| DL65 | RECESSED 4" LED DOWNLIGHT DAMP LOCATION EMERGENCY BATTERY BACKUP 1 INCH TRIM RING |
| DL66 | RECESSED 6" LED DOWNLIGHT DAMP LOCATION EMERGENCY BATTERY BACKUP 1 INCH TRIM RING |
| DL67 | RECESSED 4" LED DOWNLIGHT DAMP LOCATION EMERGENCY BATTERY BACKUP 1 INCH TRIM RING |
| DL68 | RECESSED 6" LED DOWNLIGHT DAMP LOCATION EMERGENCY BATTERY BACKUP 1 INCH TRIM RING |
| DL69 | RECESSED 4" LED DOWNLIGHT DAMP LOCATION EMERGENCY BATTERY BACKUP 1 INCH TRIM RING |
| DL70 | RECESSED 6" LED DOWNLIGHT DAMP LOCATION EMERGENCY BATTERY BACKUP 1 INCH TRIM RING |
| DL71 | RECESSED 4" LED DOWNLIGHT DAMP LOCATION EMERGENCY BATTERY BACKUP 1 INCH TRIM RING |
| DL72 | RECESSED 6" LED DOWNLIGHT DAMP LOCATION EMERGENCY BATTERY BACKUP 1 INCH TRIM RING |
| DL73 | RECESSED 4" LED DOWNLIGHT DAMP LOCATION EMERGENCY BATTERY BACKUP 1 INCH TRIM RING |
| DL74 | RECESSED 6" LED DOWNLIGHT DAMP LOCATION EMERGENCY BATTERY BACKUP 1 INCH TRIM RING |
| DL75 | RECESSED 4" LED DOWNLIGHT DAMP LOCATION EMERGENCY BATTERY BACKUP 1 INCH TRIM RING |
| DL76 | RECESSED 6" LED DOWNLIGHT DAMP LOCATION EMERGENCY BATTERY BACKUP 1 INCH TRIM RING |
| DL77 | RECESSED 4" LED DOWNLIGHT DAMP LOCATION EMERGENCY BATTERY BACKUP 1 INCH TRIM RING |
| DL78 | RECESSED 6" LED DOWNLIGHT DAMP LOCATION EMERGENCY BATTERY BACKUP 1 INCH TRIM RING |
| DL79 | RECESSED 4" LED DOWNLIGHT DAMP LOCATION EMERGENCY BATTERY BACKUP 1 INCH TRIM RING |
| DL80 | RECESSED 6" LED DOWNLIGHT DAMP LOCATION EMERGENCY BATTERY BACKUP 1 INCH TRIM RING |
| DL81 | RECESSED 4" LED DOWNLIGHT DAMP LOCATION EMERGENCY BATTERY BACKUP 1 INCH TRIM RING |
| DL82 | RECESSED 6" LED DOWNLIGHT DAMP LOCATION EMERGENCY BATTERY BACKUP 1 INCH TRIM RING |
| DL83 | RECESSED 4" LED DOWNLIGHT DAMP LOCATION EMERGENCY BATTERY BACKUP 1 INCH TRIM RING |
| DL84 | RECESSED 6" LED DOWNLIGHT DAMP LOCATION EMERGENCY BATTERY BACKUP 1 INCH TRIM RING |
| DL85 | RECESSED 4" LED DOWNLIGHT DAMP LOCATION EMERGENCY BATTERY BACKUP 1 INCH TRIM RING |
| DL86 | RECESSED 6" LED DOWNLIGHT DAMP LOCATION EMERGENCY BATTERY BACKUP 1 INCH TRIM RING |
| DL87 | RECESSED 4" LED DOWNLIGHT DAMP LOCATION EMERGENCY BATTERY BACKUP 1 INCH TRIM RING |
| DL88 | RECESSED 6" LED DOWNLIGHT DAMP LOCATION EMERGENCY BATTERY BACKUP 1 INCH TRIM RING |
| DL89 | RECESSED 4" LED DOWNLIGHT DAMP LOCATION EMERGENCY BATTERY BACKUP 1 INCH TRIM RING |
| DL90 | RECESSED 6" LED DOWNLIGHT DAMP LOCATION EMERGENCY BATTERY BACKUP 1 INCH TRIM RING |
| DL91 | RECESSED 4" LED DOWNLIGHT DAMP LOCATION EMERGENCY BATTERY BACKUP 1 INCH TRIM RING |
| DL92 | RECESSED 6" LED DOWNLIGHT DAMP LOCATION EMERGENCY BATTERY BACKUP 1 INCH TRIM RING |
| DL93 | RECESSED 4" LED DOWNLIGHT DAMP LOCATION EMERGENCY BATTERY BACKUP 1 INCH TRIM RING |
| DL94 | RECESSED 6" LED DOWNLIGHT DAMP LOCATION EMERGENCY BATTERY BACKUP 1 INCH TRIM RING |
| DL95 | RECESSED 4" LED DOWNLIGHT DAMP LOCATION EMERGENCY BATTERY BACKUP 1 INCH TRIM RING |
| DL96 | RECESSED 6" LED DOWNLIGHT DAMP LOCATION EMERGENCY BATTERY BACKUP 1 INCH TRIM RING |
| DL97 | RECESSED 4" LED DOWNLIGHT DAMP LOCATION EMERGENCY BATTERY BACKUP 1 INCH TRIM RING |
| DL98 | RECESSED 6" LED DOWNLIGHT DAMP LOCATION EMERGENCY BATTERY BACKUP 1 INCH TRIM RING |
| DL99 | RECESSED 4" LED DOWNLIGHT DAMP LOCATION EMERGENCY BATTERY BACKUP 1 INCH TRIM RING |
| DL100 | RECESSED 6" LED DOWNLIGHT DAMP LOCATION EMERGENCY BATTERY BACKUP 1 INCH TRIM RING |



1 LIGHTING PLAN

ELECTRICAL NOTES:

- ELECTRICAL CONTRACTOR SHALL INSTALL LIGHTING FIXTURES AND LAMPS FURNISHED BY WAWA.
- NO SHARED NEUTRAL BETWEEN CIRCUITS SHALL BE PERMITTED.
- REFER TO PROJECT SPECIFICATIONS FOR EXTENT OF LIGHTING PRODUCT SPECIFICATIONS.
- ANY REQUIRED TEMPORARY LIGHTING IS TO BE PER NEC AND LOCAL JURISDICTION.
- LIGHTING FIXTURES SUPPORTED BY CEILING GRID SHALL ALSO BE SUPPORTED BY HANDCAGES. FIXTURES WEIGHING LESS THAN 10 LBS SHALL BE SUPPORTED BY (1) 12 GAUGE WIRE CONNECTED FROM OPPOSITE CORNERS OF THE FIXTURE TO THE STRUCTURE ABOVE. HANDCAGE CONNECTIONS SHALL MEET APPROVAL OF THE E&E.
- ALL FINAL CONNECTIONS TO THE REFRIGERATION DOOR HEATERS AND REFRIGERATION LIGHTS ARE THE RESPONSIBILITY OF THE GC.
- REFER TO ARCHITECTURAL DRAWINGS FOR MOUNTING HEIGHTS OF WALL MOUNT AND PENDANT MOUNT FIXTURES.

KEYNOTES:

- ALL LIGHTING BRANCH CIRCUITING SHALL BE ROUTED ABOVE CEILING EXPOSED CONDUIT OR SEAL TIGHT IS NOT ACCEPTED.
- E.G. TO COORDINATE EXACT LOCATION OF JUNCTION BOX WITH SIGN INSTALLER. VERIFY WITH SIGN INSTALLER OR MANUFACTURER THAT SIGN DISCONNECT SWITCH IS PROVIDED PER NEC 800.40(1). PROVIDE DISCONNECT IF REQUIRED.
- NOT USED.
- CONNECT CIRCUITING FOR TYPE 'T' TALKER AHEAD OF LIGHTING CONTACTOR SWITCHING CIRCUITING AND CONNECTION FROM JUNCTION BOX TO EQUIPMENT LIGHTING SHALL BE BY REFRIGERATION COMPANY CONTRACTOR. E.G. TO LEAVE 15' COIL OF WIRE IN CEILING SPACE FOR THIS CIRCUIT. FINAL CONNECTION BY REFRIGERATION CONTRACTOR.
- PROVIDE MOTION DETECTOR OCCUPANCY SENSORS WITH DETECTION DISTANCE RATINGS TO ALLOW THE SENSORS TO FUNCTION PROPERLY AT THE LOCATIONS SHOWN ON THIS PLAN. RESTROOM OCCUPANCY SENSORS ARE TO BE SET AT 30 MINUTES.
- SWITCH TO CONTROL LIGHTS IN SELF SERVICE WALK-IN COOLER.
- WALL MOUNTED LIGHTED WAWA SIGN WITH DISCONNECT SWITCH (MAGBERRY #3042, SINGLE POLE, 2# AMP, DISCONNECT SWITCH TO BE LOCATED WITHIN SIGHT OF SIGN. SEE DETAIL #11 ON SHEET #4 FOR MOUNTING OF RECEPANCE AND DISCONNECT SENSOR SWITCH #1-CRA-10-L1) OCCUPANCY SENSOR.
- PROVIDE SENSOR SWITCH #1-CRA-10-L1 OCCUPANCY SENSOR.
- FIXTURE SHALL BE SECURED TO WALL AT (0) POINTS TO PREVENT MOMENTARY ROTATION.
- PROVIDE POWER TO THE EMERGENCY BALLAST OF THIS FIXTURE AHEAD OF ANY SWITCHING DIRECTLY FROM BREAKER. CIRCUIT TO NORMAL FIXTURE BALLAST THROUGH LIGHTING CONTACTOR.
- ORIENT FIXTURE WITH MIRROR SIDE TOWARD WALL.
- LIGHTED DRINGS SIGN 12 VOLT POWER SUPPLY FASTENED TO MOUNTING ANGLE. PROVIDE JUNCTION BOX WITH DISCONNECT SWITCH MOUNTED TO ANGLE.

Order Plans @

WWW.LDILine.com

1925 Prospect Ave.
 Orlando, FL 32814
 P (407) 661-9100
 F (407) 661-9101
 www.lpi.com



CLIENT NAME
WAWA

280 WEST BALTIMORE PIKE
 WAWA, PENNSYLVANIA 19063

PROJECT NAME
WAWA F85L 2019.01 STORE #8351 - CMM

1004 EDGEWOOD AVE.
 JACKSONVILLE, FL 32254

SHEET TITLE
LIGHTING PLAN

| No. | Description | Date |
|-----|-------------|------------|
| 1 | PRELIMINARY | 06/09/2020 |
| 2 | REVISED | 06/09/2020 |
| 3 | REVISED | 06/09/2020 |
| 4 | REVISED | 06/09/2020 |
| 5 | REVISED | 06/09/2020 |
| 6 | REVISED | 06/09/2020 |
| 7 | REVISED | 06/09/2020 |
| 8 | REVISED | 06/09/2020 |
| 9 | REVISED | 06/09/2020 |
| 10 | REVISED | 06/09/2020 |
| 11 | REVISED | 06/09/2020 |
| 12 | REVISED | 06/09/2020 |
| 13 | REVISED | 06/09/2020 |
| 14 | REVISED | 06/09/2020 |
| 15 | REVISED | 06/09/2020 |
| 16 | REVISED | 06/09/2020 |
| 17 | REVISED | 06/09/2020 |
| 18 | REVISED | 06/09/2020 |
| 19 | REVISED | 06/09/2020 |
| 20 | REVISED | 06/09/2020 |
| 21 | REVISED | 06/09/2020 |
| 22 | REVISED | 06/09/2020 |
| 23 | REVISED | 06/09/2020 |
| 24 | REVISED | 06/09/2020 |
| 25 | REVISED | 06/09/2020 |
| 26 | REVISED | 06/09/2020 |
| 27 | REVISED | 06/09/2020 |
| 28 | REVISED | 06/09/2020 |
| 29 | REVISED | 06/09/2020 |
| 30 | REVISED | 06/09/2020 |
| 31 | REVISED | 06/09/2020 |
| 32 | REVISED | 06/09/2020 |
| 33 | REVISED | 06/09/2020 |
| 34 | REVISED | 06/09/2020 |
| 35 | REVISED | 06/09/2020 |
| 36 | REVISED | 06/09/2020 |
| 37 | REVISED | 06/09/2020 |
| 38 | REVISED | 06/09/2020 |
| 39 | REVISED | 06/09/2020 |
| 40 | REVISED | 06/09/2020 |
| 41 | REVISED | 06/09/2020 |
| 42 | REVISED | 06/09/2020 |
| 43 | REVISED | 06/09/2020 |
| 44 | REVISED | 06/09/2020 |
| 45 | REVISED | 06/09/2020 |
| 46 | REVISED | 06/09/2020 |
| 47 | REVISED | 06/09/2020 |
| 48 | REVISED | 06/09/2020 |
| 49 | REVISED | 06/09/2020 |
| 50 | REVISED | 06/09/2020 |
| 51 | REVISED | 06/09/2020 |
| 52 | REVISED | 06/09/2020 |
| 53 | REVISED | 06/09/2020 |
| 54 | REVISED | 06/09/2020 |
| 55 | REVISED | 06/09/2020 |
| 56 | REVISED | 06/09/2020 |
| 57 | REVISED | 06/09/2020 |
| 58 | REVISED | 06/09/2020 |
| 59 | REVISED | 06/09/2020 |
| 60 | REVISED | 06/09/2020 |
| 61 | REVISED | 06/09/2020 |
| 62 | REVISED | 06/09/2020 |
| 63 | REVISED | 06/09/2020 |
| 64 | REVISED | 06/09/2020 |
| 65 | REVISED | 06/09/2020 |
| 66 | REVISED | 06/09/2020 |
| 67 | REVISED | 06/09/2020 |
| 68 | REVISED | 06/09/2020 |
| 69 | REVISED | 06/09/2020 |
| 70 | REVISED | 06/09/2020 |
| 71 | REVISED | 06/09/2020 |
| 72 | REVISED | 06/09/2020 |
| 73 | REVISED | 06/09/2020 |
| 74 | REVISED | 06/09/2020 |
| 75 | REVISED | 06/09/2020 |
| 76 | REVISED | 06/09/2020 |
| 77 | REVISED | 06/09/2020 |
| 78 | REVISED | 06/09/2020 |
| 79 | REVISED | 06/09/2020 |
| 80 | REVISED | 06/09/2020 |
| 81 | REVISED | 06/09/2020 |
| 82 | REVISED | 06/09/2020 |
| 83 | REVISED | 06/09/2020 |
| 84 | REVISED | 06/09/2020 |
| 85 | REVISED | 06/09/2020 |
| 86 | REVISED | 06/09/2020 |
| 87 | REVISED | 06/09/2020 |
| 88 | REVISED | 06/09/2020 |
| 89 | REVISED | 06/09/2020 |
| 90 | REVISED | 06/09/2020 |
| 91 | REVISED | 06/09/2020 |
| 92 | REVISED | 06/09/2020 |
| 93 | REVISED | 06/09/2020 |
| 94 | REVISED | 06/09/2020 |
| 95 | REVISED | 06/09/2020 |
| 96 | REVISED | 06/09/2020 |
| 97 | REVISED | 06/09/2020 |
| 98 | REVISED | 06/09/2020 |
| 99 | REVISED | 06/09/2020 |
| 100 | REVISED | 06/09/2020 |

PROJECT NO.
 2175780

DATE
 06/09/2020

WAWA
 JACKSONVILLE

CHECKED
 JB

DATE
 06/09/2020

WAWA
 JACKSONVILLE

PROJECT NO.
 2175780

DATE
 06/09/2020

WAWA
 JACKSONVILLE

CHECKED
 JB

DATE
 06/09/2020

WAWA
 JACKSONVILLE

PROJECT NO.
 2175780

DATE
 06/09/2020

WAWA
 JACKSONVILLE

CHECKED
 JB

DATE
 06/09/2020