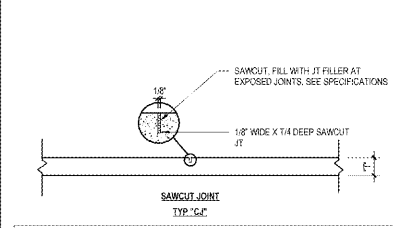
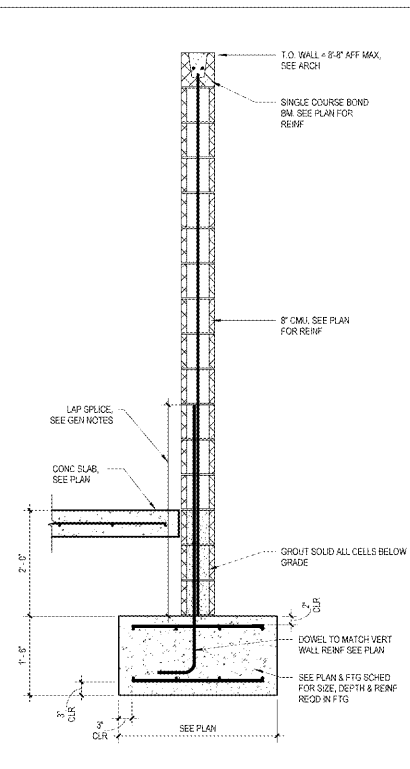


11 CONTINUITY CORNER, TYP
S10 3/4" = 1'-0"

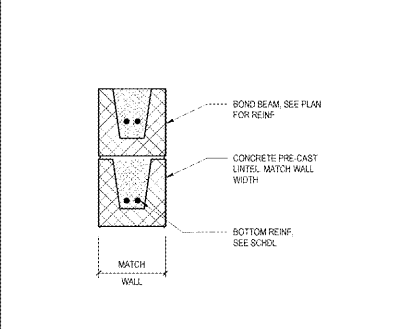


SLAB JOINT NOTES:
1. SEE PLAN FOR SLAB THICKNESS "T" REINFORCING AND SUBBASE
2. CONTROL JOINTS TO BE EITHER A SAWCUT OR CONSTRUCTION JT
3. SAWCUT JT SHALL BE 1/2" WIDE X 1/4" DEEP MADE WITHIN 2 HRS MIN AND 13 HRS MAX AFTER CONC PLACEMENT WITHOUT HAZELING AND BEFORE RANDOM CRACKS OCCUR

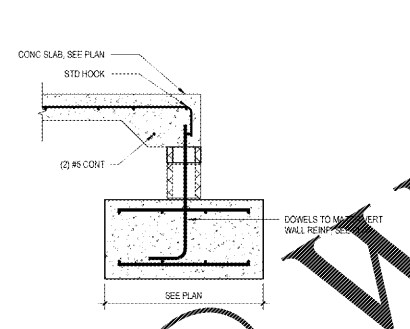
10 GENERAL SLAB JOINT INFORMATION
S10 3/4" = 1'-0"



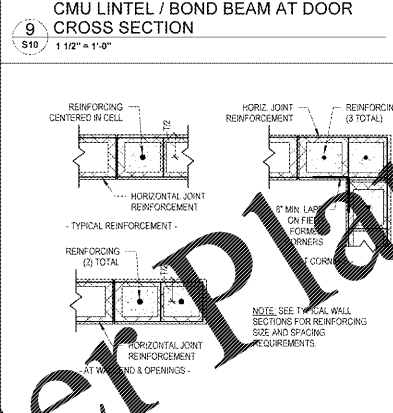
6 FOUNDATION DETAIL
S10 3/4" = 1'-0"



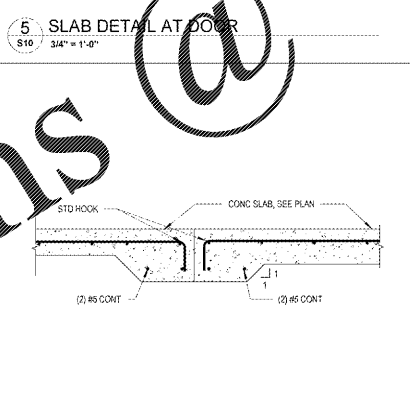
9 CMU LINTEL / BOND BEAM AT DOOR CROSS SECTION
S10 1 1/2" = 1'-0"



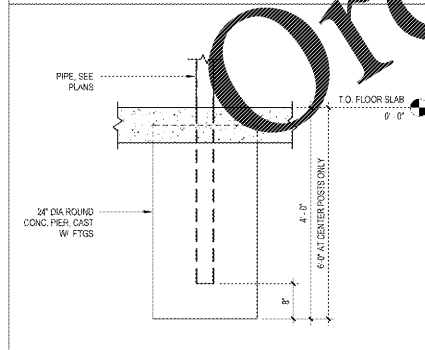
5 SLAB DETAIL AT DOOR
S10 3/4" = 1'-0"



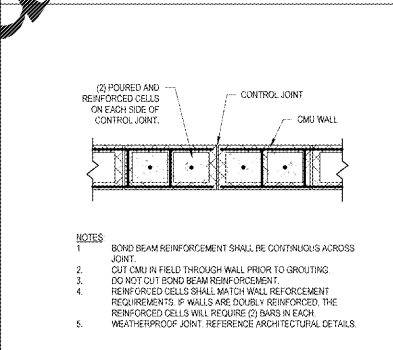
8 TYPICAL CMU DETAILS
S10 3/4" = 1'-0"



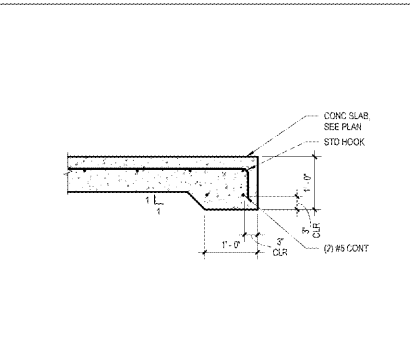
4 SLAB TRANSITION DETAIL
S10 3/4" = 1'-0"



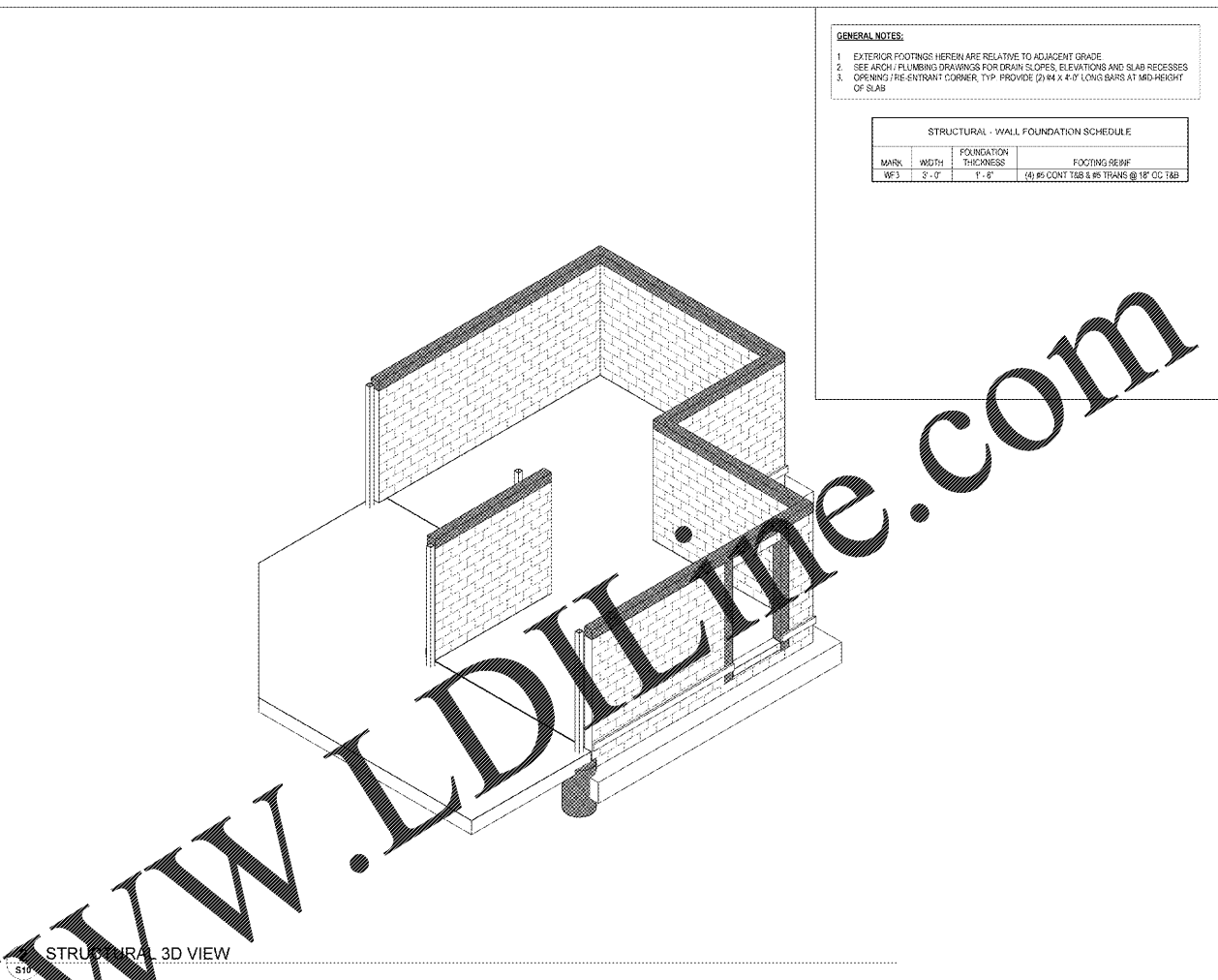
12 COLUMN ENCASED IN CONCRETE
S10 3/4" = 1'-0"



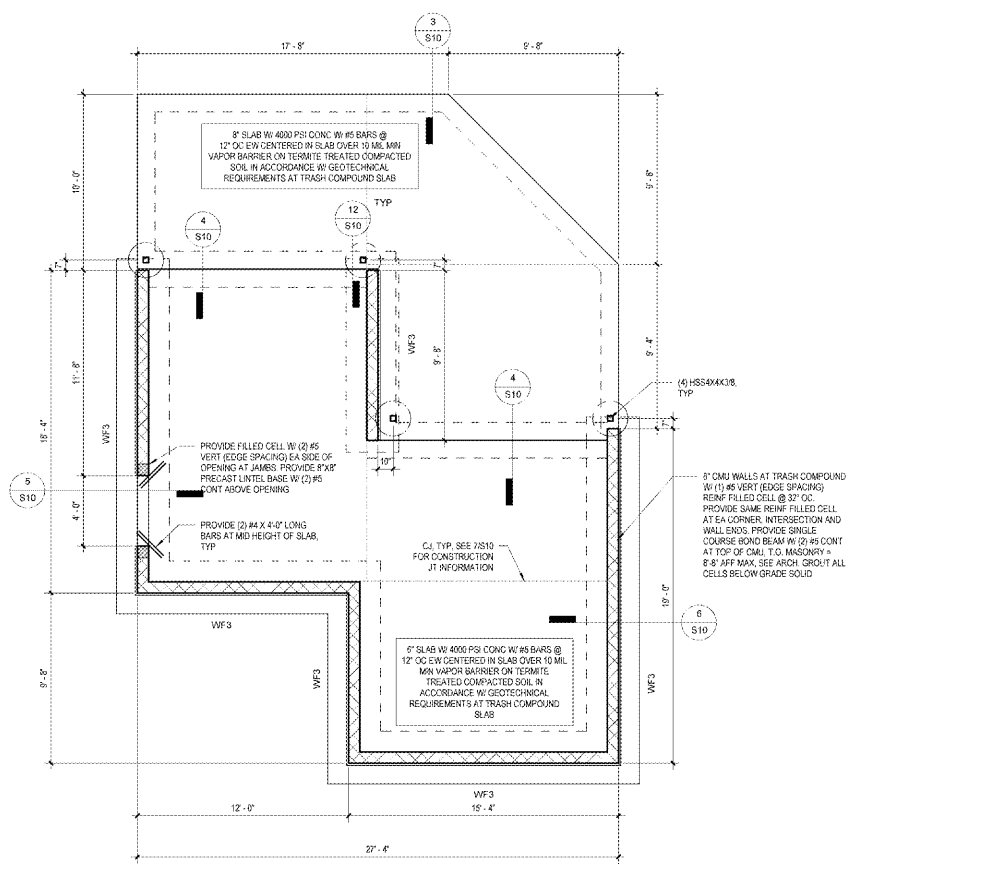
7 CMU CONTROL JOINT
S10 1" = 1'-0"



3 THICKENED EDGE DETAIL
S10 3/4" = 1'-0"



1 FOUNDATION PLAN
S10 1/4" = 1'-0"



1925 Prospect Ave.
Orlando, FL 32814
P (407) 661-9100
F (407) 661-9101
www.ep.com

Enhaqi & Peterson
Architects Engineers Planners

CLIENT NAME
WAWA
280 WEST BALTIMORE PIKE
WAWA, PENNSYLVANIA 19063

PROJECT NAME
WAWA FLOF17 2019.01 STORE #5351 - CMM
1004 EDGEWOOD AVE.
JACKSONVILLE, FL 32254

SHEET TITLE
TRASH COMPOUND

PROJECT NO.	217570
DATE	06-23-2018
REVISION	DESCRIPTION
A	REV 2018.01
B	REV 2018.02
C	REV 2018.03
D	REV 2018.04
E	REV 2018.05
F	REV 2018.06
G	REV 2018.07
H	REV 2018.08
I	REV 2018.09
J	REV 2018.10
K	REV 2018.11
L	REV 2018.12
M	REV 2019.01
N	REV 2019.02
O	REV 2019.03
P	REV 2019.04
Q	REV 2019.05
R	REV 2019.06
S	REV 2019.07
T	REV 2019.08
U	REV 2019.09
V	REV 2019.10
W	REV 2019.11
X	REV 2019.12
Y	REV 2020.01
Z	REV 2020.02
AA	REV 2020.03
AB	REV 2020.04
AC	REV 2020.05
AD	REV 2020.06
AE	REV 2020.07
AF	REV 2020.08
AG	REV 2020.09
AH	REV 2020.10
AI	REV 2020.11
AJ	REV 2020.12
AK	REV 2021.01
AL	REV 2021.02
AM	REV 2021.03
AN	REV 2021.04
AO	REV 2021.05
AP	REV 2021.06
AQ	REV 2021.07
AR	REV 2021.08
AS	REV 2021.09
AT	REV 2021.10
AU	REV 2021.11
AV	REV 2021.12
AW	REV 2022.01
AX	REV 2022.02
AY	REV 2022.03
AZ	REV 2022.04
BA	REV 2022.05
BB	REV 2022.06
BC	REV 2022.07
BD	REV 2022.08
BE	REV 2022.09
BF	REV 2022.10
BG	REV 2022.11
BH	REV 2022.12
BI	REV 2023.01
BJ	REV 2023.02
BK	REV 2023.03
BL	REV 2023.04
BM	REV 2023.05
BN	REV 2023.06
BO	REV 2023.07
BP	REV 2023.08
BQ	REV 2023.09
BR	REV 2023.10
BS	REV 2023.11
BT	REV 2023.12
BU	REV 2024.01
BV	REV 2024.02
BW	REV 2024.03
BX	REV 2024.04
BY	REV 2024.05
BZ	REV 2024.06
CA	REV 2024.07
CB	REV 2024.08
CC	REV 2024.09
CD	REV 2024.10
CE	REV 2024.11
CF	REV 2024.12
CG	REV 2025.01
CH	REV 2025.02
CI	REV 2025.03
CJ	REV 2025.04
CK	REV 2025.05
CL	REV 2025.06
CM	REV 2025.07
CN	REV 2025.08
CO	REV 2025.09
CP	REV 2025.10
CQ	REV 2025.11
CR	REV 2025.12
CS	REV 2026.01
CT	REV 2026.02
CU	REV 2026.03
CV	REV 2026.04
CV	REV 2026.05
CV	REV 2026.06
CV	REV 2026.07
CV	REV 2026.08
CV	REV 2026.09
CV	REV 2026.10
CV	REV 2026.11
CV	REV 2026.12
CV	REV 2027.01
CV	REV 2027.02
CV	REV 2027.03
CV	REV 2027.04
CV	REV 2027.05
CV	REV 2027.06
CV	REV 2027.07
CV	REV 2027.08
CV	REV 2027.09
CV	REV 2027.10
CV	REV 2027.11
CV	REV 2027.12
CV	REV 2028.01
CV	REV 2028.02
CV	REV 2028.03
CV	REV 2028.04
CV	REV 2028.05
CV	REV 2028.06
CV	REV 2028.07
CV	REV 2028.08
CV	REV 2028.09
CV	REV 2028.10
CV	REV 2028.11
CV	REV 2028.12
CV	REV 2029.01
CV	REV 2029.02
CV	REV 2029.03
CV	REV 2029.04
CV	REV 2029.05
CV	REV 2029.06
CV	REV 2029.07
CV	REV 2029.08
CV	REV 2029.09
CV	REV 2029.10
CV	REV 2029.11
CV	REV 2029.12
CV	REV 2030.01
CV	REV 2030.02
CV	REV 2030.03
CV	REV 2030.04
CV	REV 2030.05
CV	REV 2030.06
CV	REV 2030.07
CV	REV 2030.08
CV	REV 2030.09
CV	REV 2030.10
CV	REV 2030.11
CV	REV 2030.12