



EQUIPMENT SCHEDULE 1		
EQ#	DESCRIPTION	INSTALLED BY
66 OFFICE / ASSOCIATE AREA		
E7	COMPUTER CABINET	CABINET
A. WALK-IN REFRIGERATOR		
A1	RETAIL WALK-IN REFRIGERATOR	REF
A2	SELF SERVICE WALK-IN REFRIGERATOR	REF
A3	FOOD SERVICE WALK-IN REFRIGERATOR	REF
A4	FOOD SERVICE WALK-IN FREEZER	REF
B. FOOD SERVICE / COFFEE		
B1.1	REFRIGERATED SANDWICH STATION (RF/SS)	GC
B6.1	HOT FOOD TABLE W/ OVERSHELF	GC
B12.2	REHEAT/MAILZER (20X30)	GC
B14.2	TOASTER OVEN, NARROW	GC
B17	COOLING UNIT	GC
B18	ESTIMATING SCALE	GC
B19	SOAP DISPENSER	GC
B21	SHAPER TONEL DISPENSER	GC
B24	OPEN WORK STATION	GC
B26.2	COFFEE BREWER DOUBLE	GC
B26.2	COFFEE DISPENSER WITH STANDS	GC
B26.1	LAFFINGTON MACHINE - 6 FLAVOR	GC
B30.1	27" UNDERCOUNTER REFRIGERATOR	GC
B30.2	27" UNDERCOUNTER FREEZER	GC
B32	CONVECTION OVEN & STAND	GC
B35	SMOOTH BLENDER	GC
B37.1	UNDERCOUNTER ICE MAKER	GC
B40	ESPRESSO MACHINE W/ LINE FILTER	GC
B41	REFRIGERATED OPEN	GC
B42.1	ROLL OVER COUNTER	GC
B43	HOT WATER DISPENSER	GC
B45	HEATSEALER	GC
B46	HOT DRINK UNIT	GC
B47	CATER	GC
B48	MIXER	GC
B49	SOFT SERVE HEAD	GC
RETAIL AREA		
C2	ISLAND	GC
C3	ISLAND REFRIGERATED DISPLAY - 8' ISLAND	GC
C4	CHISSETTE DISPLAY W/ STORAGE 4-TOP	GC
C4.3	CHISSETTE DISPLAY W/ STORAGE 3-TOP	GC
C4.3	CHISSETTE DISPLAY W/ STORAGE 4-TOP	GC
C5.2	SUZZI WARMER - 2 TIER LARGE	GC
C6	CHISSETTE DISPLAY W/ STORAGE 4-TOP	GC
C12	RETAIL SHELVING	GC
C15.1	BAKERY DISPLAY CASE	GC
C17.3	REFRIGERATED DROP-IN W/ CONDENSER LARGE	GC
C18.3	COFFEE COUNTER DISPLAY - FLORIDA SMALL	GC
C19	REACH-IN FREEZER - 2 DOOR	GC
C20	ICE COLD DISPENSER	GC
C21	ICE TEA MACHINE	GC
C22	FRESHTEA BEVERAGE DISPENSER	GC
C23	PROXON CARBONATOR BEVERAGE (FCB)	GC
C28	CUBED ICE MACHINE ABOVE	GC
D. BACK OF HOUSE		
D1	BACK-BOX SHELVING RACK	GC
D2	STORAGE SHELVING	GC
D3	CSR UNIT	GC
D11	ROLLING STORAGE SHELVES	GC
E. OFFICE / ASSOCIATE AREA		
E4	LOCKERS	GC
E6	FUEL TANK MONITOR	GC
F. WASHROOM		
F1.3	DRYING RACK 2X30"	GC
F3	3 COMPARTMENT SINK	GC
F5	G.S. HAND SINK WALL HUNG	GC
G. ASSEMBLED WORKSTATIONS (METRO)		
G1	METRO REHEAT/MAILZER PREP WORKSTATION	GC
G2	METRO ROLL SAWING PREP WORKSTATION	GC
G4	SUZZI WORKSTATION	GC
Z. EXTERIOR EQUIPMENT		
Z10	CO2 TANK	GC
Z12	OUTDOOR ICE MERCHANTER	GC

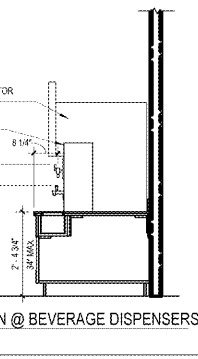
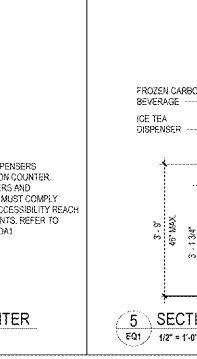
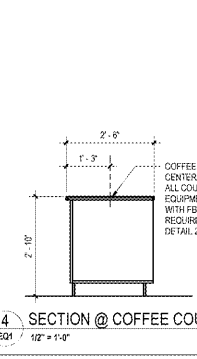
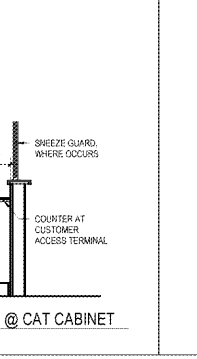
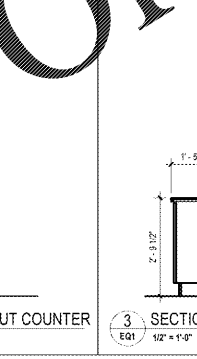
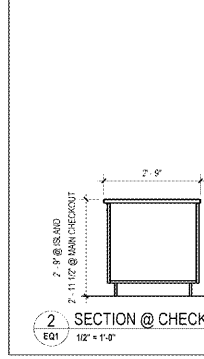
MILLWORK SCHEDULE		
EQ#	DESCRIPTION	INSTALLED BY
MW - MILLWORK		
MW2	ROLLING DRAWER CABINET	CABINET
MW3.2	WAP/ COUNTER	CABINET
MW4	HANDSINK CABINET	CABINET
MW4.4	COFFEE BREWER W/ SINK, S.S. COUNTERTOP	CABINET
MW6.1	COFFEE SERVER COUNTER	CABINET
MW7.1	COFFEE CORNER CABINET	CABINET
MW8.1	FULL SERVE DRINK COUNTER	CABINET
MW10	OPEN COUNTER	CABINET
MW11.1	FULL SERVE DRINK COUNTER	CABINET
MW12	DESK UNIT	CABINET
MW13.1	TABLE 20W X 30L	CABINET
MW14.1	ASSOCIATE COMPUTER TABLE (20'X22')	CABINET
MW15	2" DRAWER	CABINET
MW16.1	3" DRAWER	CABINET
MW16.2	ISLAND CHECKOUT COUNTER	CABINET
MW16.4	MAN CHECKOUT COUNTER	CABINET
MW17.1	BEVERAGE CENTER COUNTER	CABINET
MW18.1	CONDIMENT COUNTER	CABINET
MW19.1	SINGLE CUP TOWER	CABINET
Z2	2" SLAB SIDE CART	CABINET

LEGEND		
ATM	AUTOMATIC TELLER MACHINE	
PE	FIRE EXTINGUISHER, LOCATE TOP OF UNIT 48" MAX AFF	
EQ#	EQUIPMENT NUMBER. SEE EQUIPMENT SCHEDULE	
SG	SPLASH GUARD	
MU	MUSIC SYSTEM ON 12" X 18" SHELF	
2"	2" PVC TUBE WITH THREADED CAP, 38" IN LENGTH, MTD. VERTICALLY TO WALL WITH METAL STRAPS	

GENERAL NOTES

- FLOOR ANCHORS: ALL TOP TRACK ROLLING STORAGE SHELVING SYSTEMS MUST BE BOLTED TO THE FLOOR TO KEEP THE SYSTEM FROM MOVING. G.C. TO BOLT THE TRIANGULAR FOOT PLATES OF THE STATIONARY UNITS WITH 1/2" DIAMETER SELF-ANCHORING BOLTS TO EXTEND INTO THE FLOORING MATERIAL AT LEAST ONE INCH.
- G.C. TO BOLT TWO SCAFFS TO THE FLOOR. ONE IN THE MANAGER'S OFFICE AND ONE AT CHECKOUT CORNER.
- WALK-IN BOX MANUFACTURER TO PROVIDE VINYL BASE FOR INTERIOR OF BOXES ONLY.
- PROVIDE 2X2" ANGLE GUIDES FOR EQUIPMENT AS NOTED, 3 SIDES.

1 EQUIPMENT PLAN
EQ1 1/8" = 1'-0"



1925 Prospect Ave.
Orlando, FL 32814
P (407) 661-9100
F (407) 661-9101
www.e-p.com

Chhab & Peterson
Architects Engineers Planners

CLIENT NAME
WAWA
280 WEST BALTIMORE PIKE
WAWA, PENNSYLVANIA 19063

PROJECT NAME
WAWA F85L 2019.01 STORE #6351 - CMM
1004 EDGEWOOD AVE.
JACKSONVILLE, FL 32254

SHEET TITLE
EQUIPMENT PLAN

PROJECT NO.	217370
DATE	08-09-2020
DESIGNER	REY, DIMITRI
CHECKER	REY, DIMITRI
DATE	08-10-2020
DESIGNER	REY, DIMITRI
CHECKER	REY, DIMITRI
DATE	08-10-2020
DESIGNER	REY, DIMITRI
CHECKER	REY, DIMITRI

EQ1