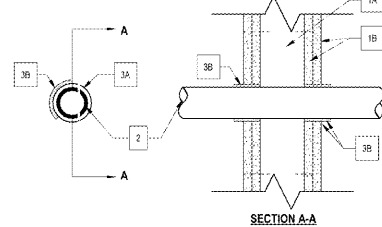


System No. W-L-2003
November 20, 2003

F Ratings - 1 and 2 Hr (See Item 3)
T Ratings - 1 and 2 Hr (See Item 3)
L Rating at Ambient - 1 CFM/sq. ft. (See Item 3B)
L Rating at 400 F - less than 1 CFM/sq. ft. (See Item 3B)



1. Wall Assembly - The 1 or 2 hr fire-rated Gypsum wall assembly shall be constructed of the materials and in the manner specified in the individual U330, U400 or V400 Series Wall or Partition Design in the UL Fire Resistance Directory and shall include the following construction features:
A. **Studs** - Wall framing shall consist of either wood studs or steel channel studs. Wood studs to consist of non 2 by 4 in. (51 by 102 mm) lumber spaced 16 in. (406 mm) OC with non 2 by 4 in. (51 by 102 mm) lumber and plates and non 2 by 4 in. (51 by 102 mm) lumber and plates and non 2 by 4 in. (51 by 102 mm) deep channels spaced non 24 in. (610 mm) OC.
B. **Gypsum Board** - 5/8 in. (15.9 mm) thick, 4 ft. (1220 mm) wide with square or tapered edges. The gypsum board type, thickness, number of layers, fastener type and sheet extension shall be specified in the individual U330, U400 or V400 Series Design in the UL Fire Resistance Directory. Max. diam. of opening is 3-1/8 in. (79 mm).

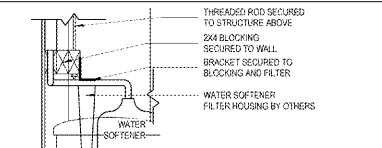
2. Through Penetrations - One nonmetallic pipe or conduit to be installed in fire through opening. The annular space between pipe or conduit and perimeter of opening shall be non 1/4 in. (6 mm) and non 3/8 in. (10 mm) pipe or conduit to be tightly applied on both sides of the fire-resisting assembly. The following lists and sizes of nonmetallic pipes or conduits are to be used:
A. **Polyvinyl Chloride (PVC) Pipe** - Non 2 in. (51 mm) diam. (or smaller) Schedule 40 and 80 PVC conduit installed in accordance with the National Electric Code (NFPA 70).
B. **Rigid Nonmetallic Conduit** - Non 2 in. (51 mm) diam. (or smaller) Schedule 40 or 80 PVC conduit installed in accordance with the National Electric Code (NFPA 70).
C. **Chlorinated Polyvinyl Chloride (CPVC) Pipe** - Non 2 in. (51 mm) diam. (or smaller) SGR13.5 CPVC pipe for use in direct process or supply piping systems.
D. **Cellular Core Polyvinyl Chloride (CPVC) Pipe** - Non 2 in. (51 mm) diam. (or smaller) Schedule 40 cellular core PVC pipe for use in direct process or supply or vented (drain, waste or vent) piping systems.
E. **Arylonitrile Butadiene Styrene (ABS) Pipe** - Non 2 in. (51 mm) diam. (or smaller) Schedule 40 solid core ABS pipe for use in direct process or supply or vented (drain, waste or vent) piping systems.
F. **Cellular Core Arylonitrile Butadiene Styrene (ABS) Pipe** - Non 2 in. (51 mm) diam. (or smaller) Schedule 40 cellular core ABS pipe for use in direct process or supply or vented (drain, waste or vent) piping systems.

3. Firestop System - Installed symmetrically on both sides of wall assembly. The hourly F and T Ratings for the firestop system are equal to the hourly fire rating of the wall assembly in which it is installed. The details of the firestop system shall be as follows:
A. **Fill, Void or Cavity Materials** - **Wrap Strip** - Non 1/4 in. (6 mm) thick intumescent elastomeric material based on one side of wall assembly. Applied 2 in. (51 mm) wide strip. Non 2 in. (51 mm) wide strip tightly wrapped around nonmetallic pipe (full side out) with seams lapped. Wrap strip laterally secured with steel wire or aluminum flat tape and slid into annular space approx 1-1/4 in. (32 mm) each that approx 3/4 in. (19 mm) of the wrap strip protrudes from the wall surface.

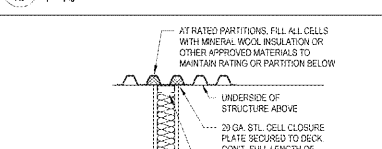
3M COMPANY - FS-156
B. **Fill, Void or Cavity Materials** - **Caulk, Sealant or Putty** - Min 5/8 in. (15.9 mm) thickness of caulk or putty applied into annular space between wrap strip and periphery of opening. A non 1/4 in. (6 mm) clear bead of caulk or putty to be applied to the wrap strip and protrusion and to the adjacent edge of the wrap strip laterally approx 3/4 in. (19 mm) from the wall surface.

3M COMPANY - CP-25WB caulk or MF+55x putty ICWB+ caulk, FireDam 150+ caulk or FB-3000 HT sealant. (Note: L Ratings apply only when Type CP-25WB+ caulk or FB-3000 HT sealant is used. CP-25WB+ and FireDam 150+ not suitable for use with CPVC pipes.)
C. **Full Tape** (not shown) - Non 4 to 102 mm) wide, 3 mil thick aluminum tape wrapped around pipe prior to the installation of the wrap strip. Full length of one wrap. Full length of both sides of wall and protruding outward. Tape is not required for pipes shown in items 2A, 2B and 2C.

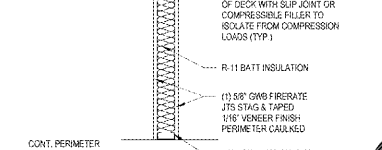
7. UL DETAIL W-L-2003
A9 12" x 1'-0"



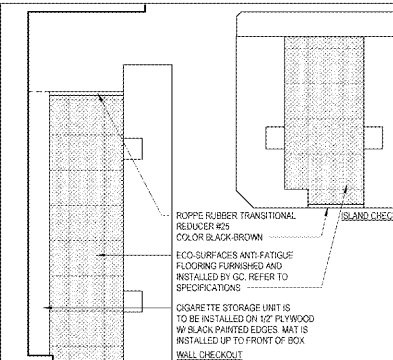
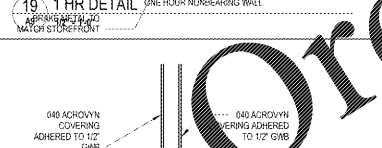
13. WATER SOFTENER FILTER SUPPORT DET.
A9 1' x 1'-0"



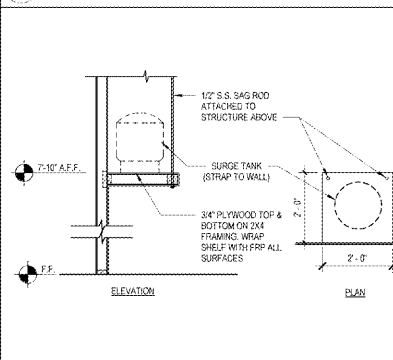
19. 1 HR DETAIL
A9 1' x 1'-0"



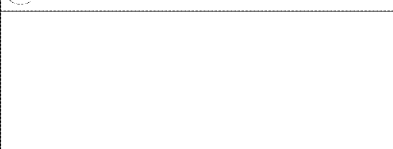
25. SECTION AT KNEE WALL
A9 3/4" x 1'-0"



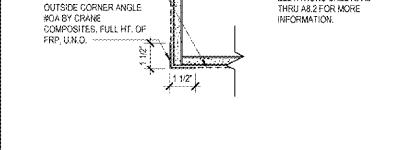
2. CHECKOUT FLOORING DETAIL
A9 1/4" x 1'-0"



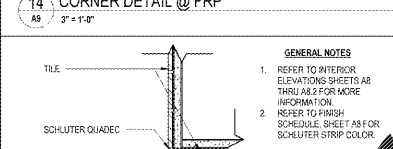
8. SURGE TANK SHELF DETAIL
A9 1/2" x 1'-0"



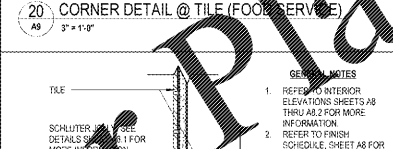
14. CORNER DETAIL @ FRP
A9 3" x 1'-0"



20. CORNER DETAIL @ TILE (FOOD SERVICE)
A9 3" x 1'-0"



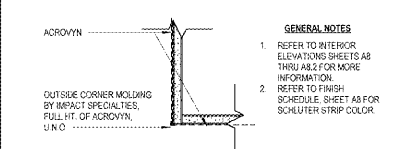
22. CORNER DETAIL @ TILE (RESTROOMS)
A9 3" x 1'-0"



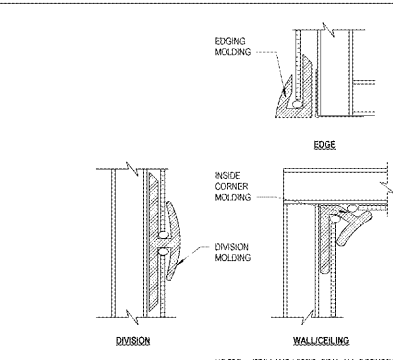
26. CORNER DETAIL @ ACROVYN
A9 3" x 1'-0"



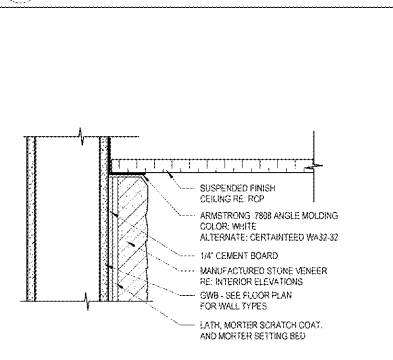
27. ICE MACHINE SHELF BLOCKING DETAIL
A9 3/4" x 1'-0"



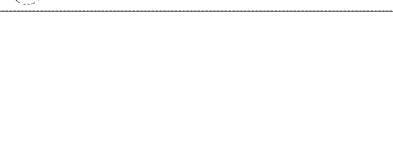
29. BOOSTER TANK SHELF DETAIL
A9 1/2" x 1'-0"



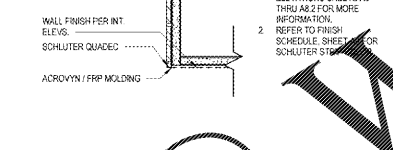
3. FRP DETAILS
A9 12" x 1'-0"



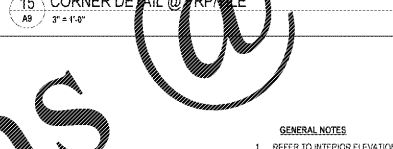
9. STONE VENEER DETAIL AT CEILING
A9 3" x 1'-0"



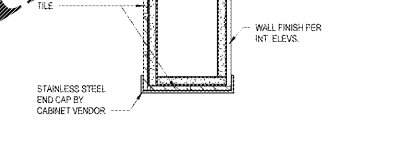
10. TRIM DETAILS
A9 3" x 1'-0"



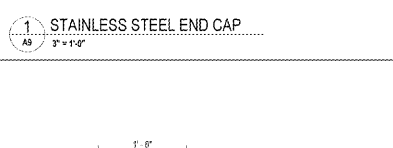
15. CORNER DETAIL @ FRP
A9 3" x 1'-0"



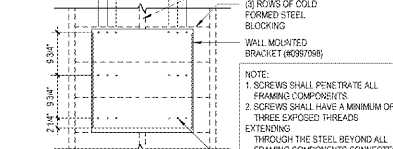
1. STAINLESS STEEL END CAP
A9 3" x 1'-0"



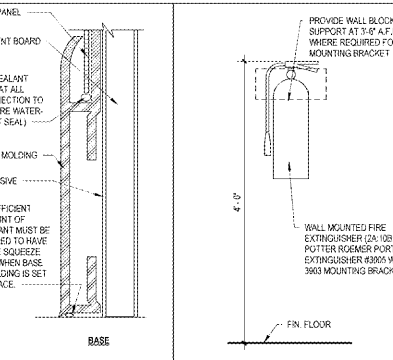
22. INT. DOOR JAM DETAIL (HEAD SIM.)
A9 3" x 1'-0"



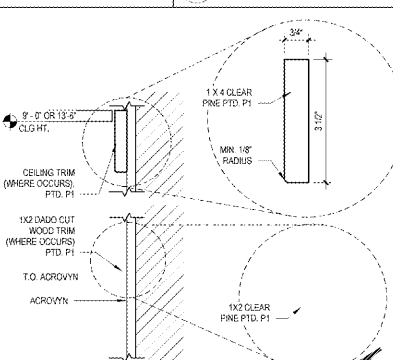
23. INT. DOOR JAM @ CHECKOUT
A9 3" x 1'-0"



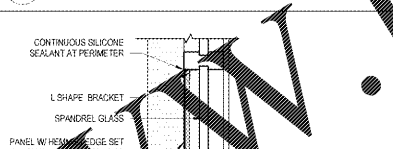
29. BOOSTER TANK SHELF DETAIL
A9 1/2" x 1'-0"



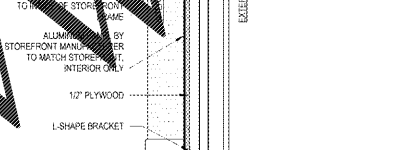
4. FIRE EXTINGUISHER DETAIL
A9 1' x 1'-0"



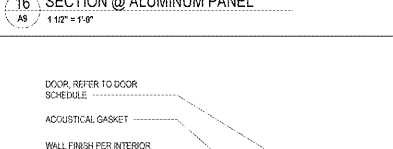
5. CASED OPENING JAMB DETAIL (HEAD SIM.)
A9 3" x 1'-0"



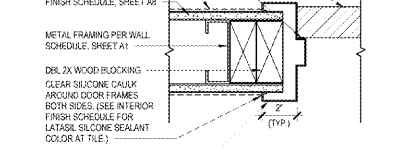
11. LOGO SIGN MOUNTING DETAIL
A9 1 1/2" x 1'-0"



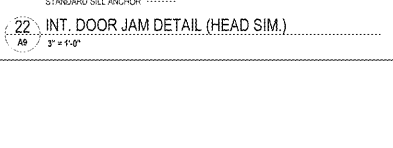
17. COLUMN DETAIL
A9 1 1/2" x 1'-0"



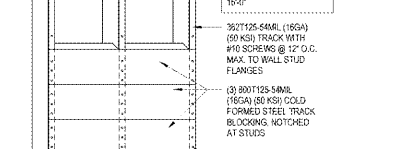
16. SECTION @ ALUMINUM PANEL
A9 1 1/2" x 1'-0"



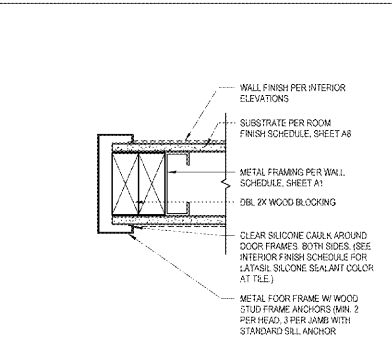
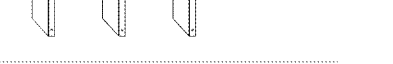
23. INT. DOOR JAM @ CHECKOUT
A9 3" x 1'-0"



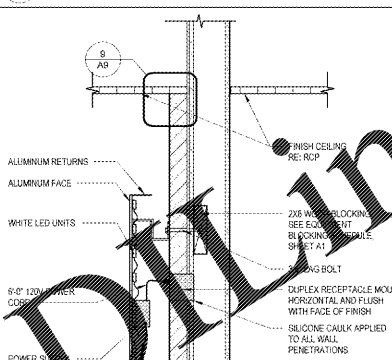
23. INT. DOOR JAM @ CHECKOUT
A9 3" x 1'-0"



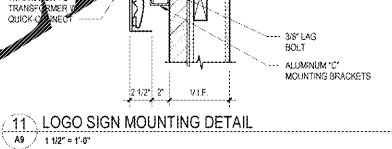
29. BOOSTER TANK SHELF DETAIL
A9 1/2" x 1'-0"



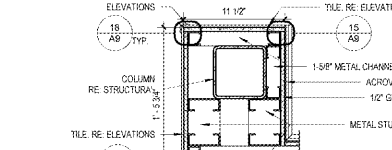
5. CASED OPENING JAMB DETAIL (HEAD SIM.)
A9 3" x 1'-0"



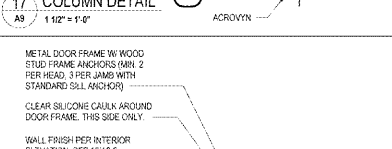
11. LOGO SIGN MOUNTING DETAIL
A9 1 1/2" x 1'-0"



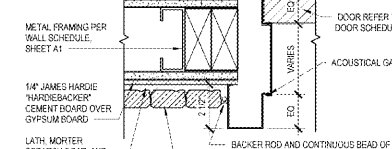
17. COLUMN DETAIL
A9 1 1/2" x 1'-0"



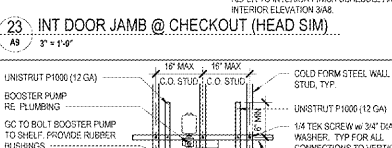
16. SECTION @ ALUMINUM PANEL
A9 1 1/2" x 1'-0"



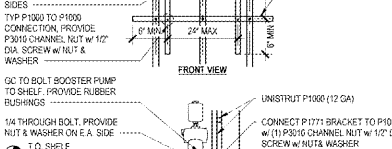
23. INT. DOOR JAM @ CHECKOUT
A9 3" x 1'-0"



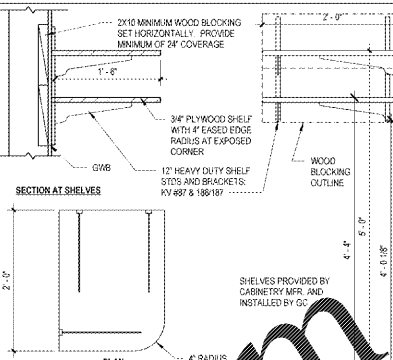
23. INT. DOOR JAM @ CHECKOUT
A9 3" x 1'-0"



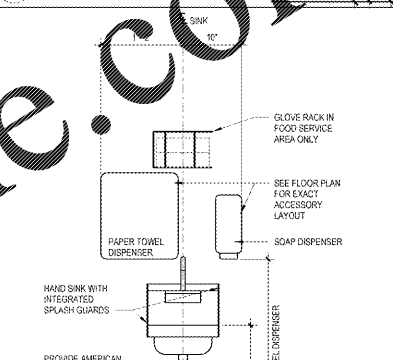
29. BOOSTER TANK SHELF DETAIL
A9 1/2" x 1'-0"



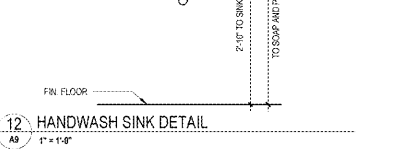
29. BOOSTER TANK SHELF DETAIL
A9 1/2" x 1'-0"



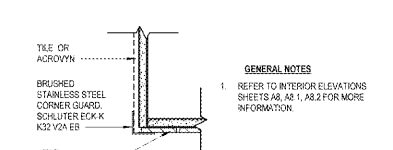
6. OFFICE SHELVING DETAIL
A9 1' x 1'-0"



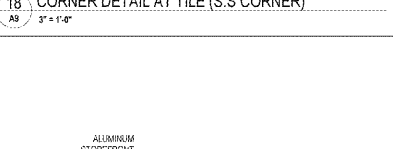
12. HANDWASH SINK DETAIL
A9 1' x 1'-0"



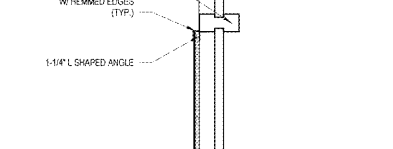
18. CORNER DETAIL AT TILE (S.S. CORNER)
A9 3" x 1'-0"



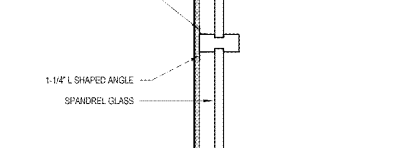
18. CORNER DETAIL AT TILE (S.S. CORNER)
A9 3" x 1'-0"



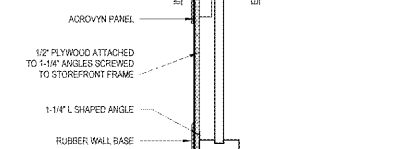
18. CORNER DETAIL AT TILE (S.S. CORNER)
A9 3" x 1'-0"



18. CORNER DETAIL AT TILE (S.S. CORNER)
A9 3" x 1'-0"



18. CORNER DETAIL AT TILE (S.S. CORNER)
A9 3" x 1'-0"



18. CORNER DETAIL AT TILE (S.S. CORNER)
A9 3" x 1'-0"



1925 Prospect Ave.
Orlando, FL 32814
P (407) 661-9100
F (407) 661-9101
www.ep.com

Chahoi & Peterson
Architects Engineers Planners

CLIENT NAME
WAWA
280 WEST BALTIMORE PIKE
WAWA, PENNSYLVANIA 19083

PROJECT NAME
WAWA F85L 2019.01 STORE #6351 - CMM
1004 EDGEWOOD AVE.
JACKSONVILLE, FL 32254

SHEET TITLE
INTERIOR DETAILS

Revision	By	Date
1	EP	08/09/2020
2	EP	08/10/2020
3	EP	08/10/2020
4	EP	08/10/2020
5	EP	08/10/2020
6	EP	08/10/2020
7	EP	08/10/2020
8	EP	08/10/2020
9	EP	08/10/2020
10	EP	08/10/2020
11	EP	08/10/2020
12	EP	08/10/2020
13	EP	08/10/2020
14	EP	08/10/2020
15	EP	08/10/2020
16	EP	08/10/2020
17	EP	08/10/2020
18	EP	08/10/2020
19	EP	08/10/2020
20	EP	08/10/2020
21	EP	08/10/2020
22	EP	08/10/2020
23	EP	08/10/2020
24	EP	08/10/2020
25	EP	08/10/2020
26	EP	08/10/2020
27	EP	08/10/2020
28	EP	08/10/2020
29	EP	08/10/2020
30	EP	08/10/2020

PROJECT NO. 2171870
DATE 08/09/2020
DRAWN BY WAWA
CHECKED BY CA

A9