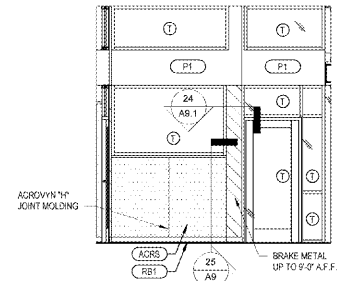
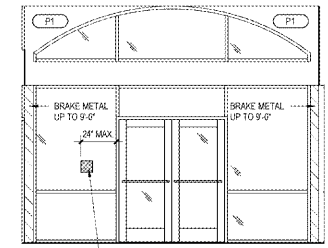


10 OFFICE CONTROL PANELS
A&2 1/2" x 1'-0"

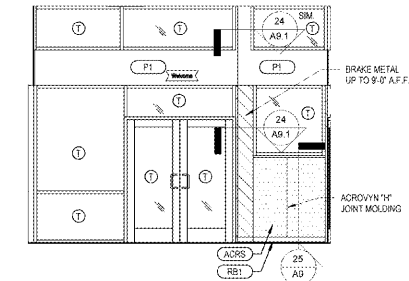
5 ADA DECAL DTL @ VESTIBULE DOOR
A&2 1/4" x 1'-0"



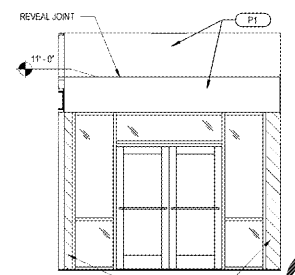
4 VESTIBULE ELEVATION
A&2 1/4" x 1'-0"



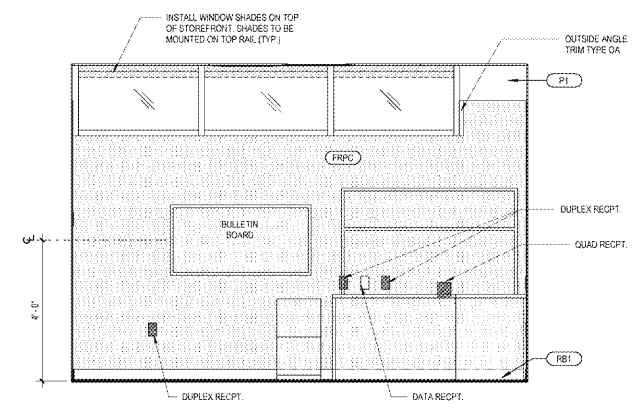
3 VESTIBULE ELEVATION
A&2 1/4" x 1'-0"



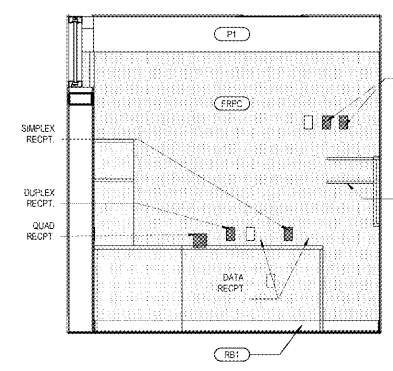
2 VESTIBULE ELEVATION
A&2 1/4" x 1'-0"



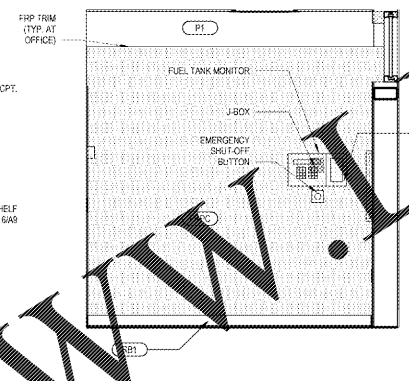
1 VESTIBULE ELEVATION
A&2 1/4" x 1'-0"



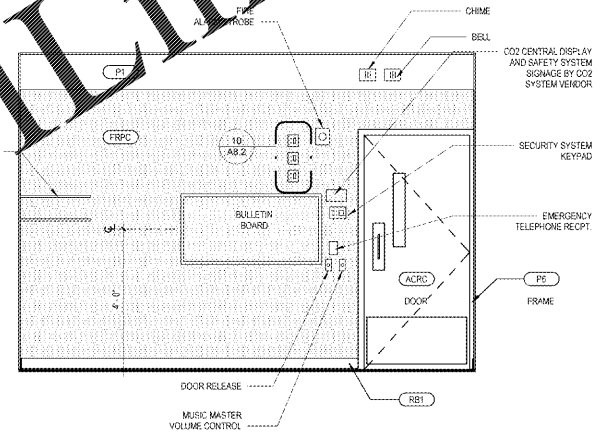
9 OFFICE ELEVATION
A&2 1/2" x 1'-0"



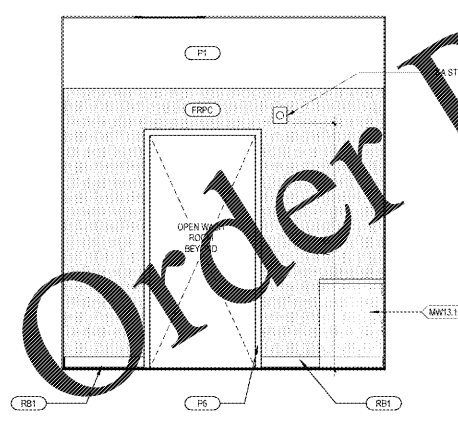
8 OFFICE ELEVATION
A&2 1/2" x 1'-0"



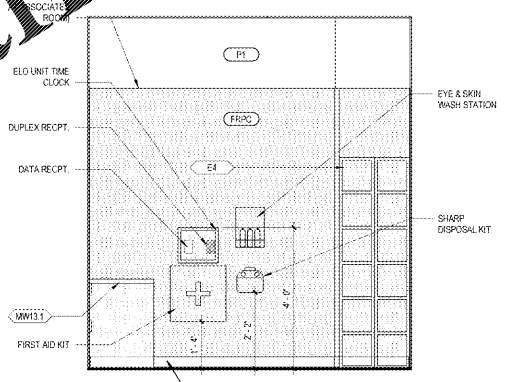
7 OFFICE ELEVATION
A&2 1/2" x 1'-0"



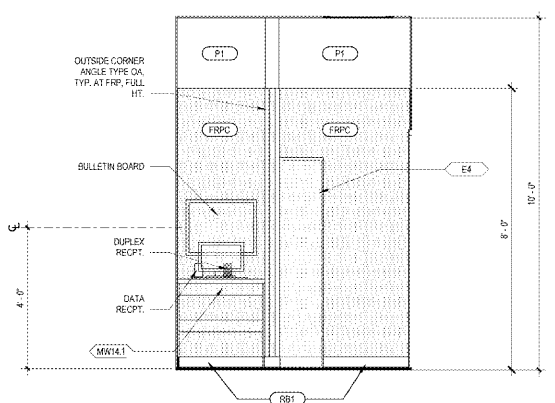
6 OFFICE ELEVATION
A&2 1/2" x 1'-0"



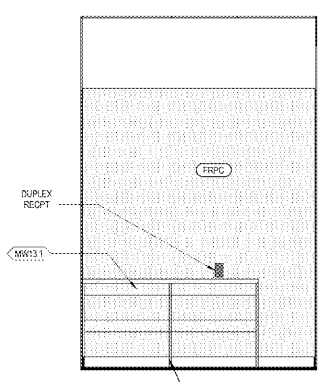
14 ASSOCIATE ROOM ELEV.
A&2 1/2" x 1'-0"



11 ASSOCIATE ROOM ELEV.
A&2 1/2" x 1'-0"



12 ASSOCIATE ROOM ELEV.
A&2 1/2" x 1'-0"



13 ASSOCIATE ROOM ELEV.
A&2 1/2" x 1'-0"

1925 Prospect Ave.
Orlando, FL 32814
P (407) 661-9100
F (407) 661-9101
www.epi.com

Chapci & Peterson
Architects Engineers Planners

CLIENT NAME
WAWA
280 WEST BALTIMORE PIKE
WAWA, PENNSYLVANIA 19063

PROJECT NAME
WAWA F85L 2019.01 STORE #6351 - CMM
1004 EDGEWOOD AVE.
JACKSONVILLE, FL 32254

SHEET TITLE
INTERIOR ELEVATIONS

Revision	Schedule	Date
1	REVISED	09/09/2020
2	REVISED	09/24/2020

PROJECT NO. 2121780
DATE 09/09/2020
DRAWN WAWA
CHECKED CA

A8.2