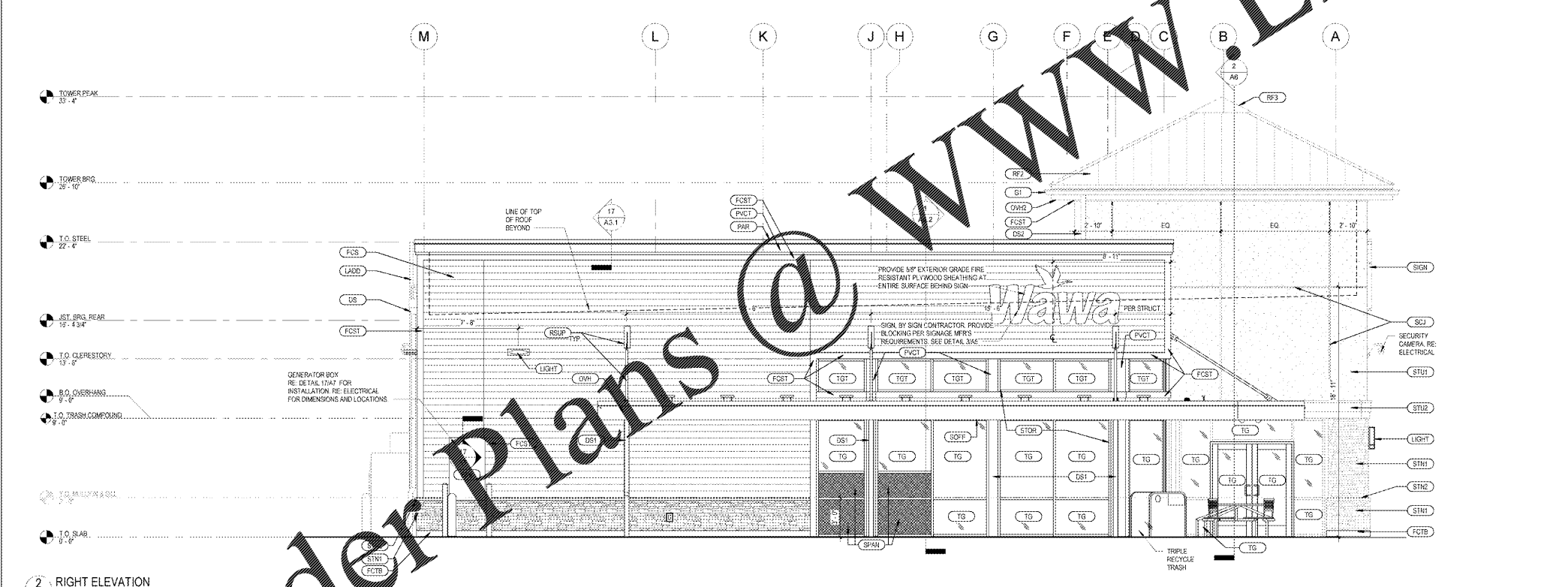
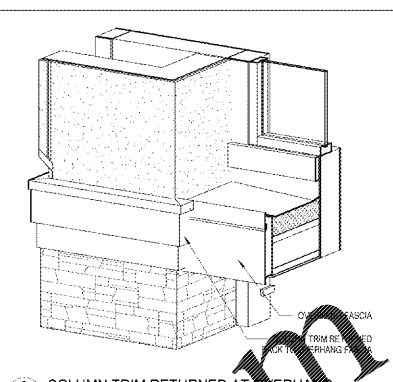


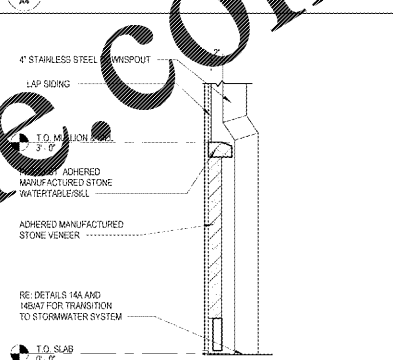
1 FRONT ELEVATION
A4 18' x 11'-0"



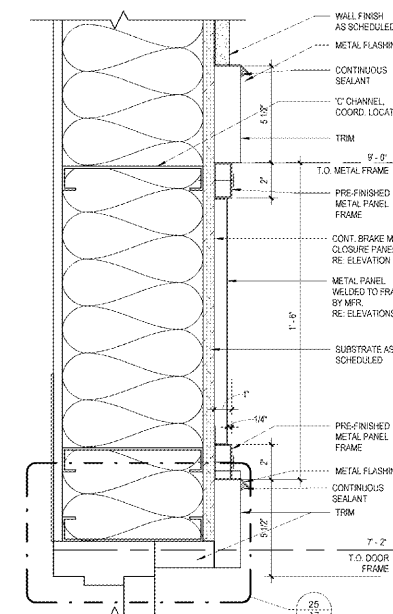
2 RIGHT ELEVATION
A4 18' x 11'-0"



3 COLUMN TRIM RETURNED AT OVERHANG
A4

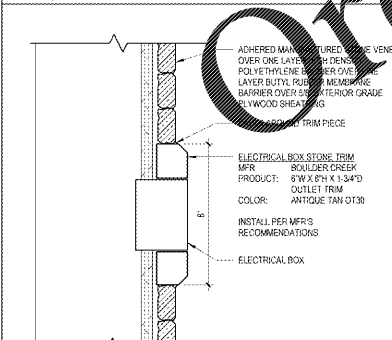


4 DOWNSPOUT AT WATERTABLE
A4 1' x 1'-0"

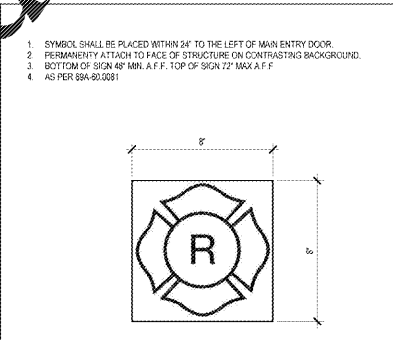


5 METAL PANEL DETAIL
A4 3' x 1'-0"

- GENERAL NOTES
1. ALL BLOCKING @ HANDS FOR LIGHTS SECURITY ITEMS SEE DETAIL 18A7
 2. MOUNT SECURITY CAMERAS THE SAME HEIGHT AS THE EXTERIOR WALL FINISH
 3. PROVIDE 6" X 6" ELECTRICAL BOX STONE TRIM BY SHOULDER CREEK COLOR: ANTIQUE TAN. AT ALL EXTERIOR ELECTRICAL RECEPTACLES MOUNTED ON STONE. RE: DETAIL 8M4.
 4. ALL WALL MOUNTED EQUIPMENT INCLUDING, BUT NOT LIMITED TO, ELECTRIC METERS, IRRIGATION METERS, PHONE CABLE BOXES, EXTERNAL VENTS, AND LOUVERS TO BE PAINTED TO MATCH WALL OR COLOR OTHERWISE CONSISTENT WITH THE BUILDING COLORS.
 5. PETERSEN PAC-CLAD IS AN ACCEPTABLE ALTERNATE MFR. FOR PRODUCTS WHERE "ATAS" IS SPECIFIED. PROVIDE EQUAL OR BETTER QUALITY PRODUCTS. SUBMIT PRODUCT DATA TO ARCHITECT FOR APPROVAL.



8 ELECT. BOX DETAIL @ STONE, TYP.
A4 8" x 11'-0"



7 LIGHT-FRAME TRUSS-TYPE CONSTRUCTION SIGN
A4 8" x 11'-0"

ARCHITECTURAL - EXTERIOR FINISH SCHEDULE			
SYMBOL	MATERIAL	MANUFACTURER	NOTES
AP5	36" X 48" ACCESS HATCH	ATAS INTERNATIONAL INC.	FACTORY FINISH
DS	ALUMINUM DOWNSCOUT	ATAS INTERNATIONAL INC.	POLISHED ALUMINUM W/ CLEAR ANODIZED FINISH
DS1	4" DIA. ALUMINUM DOWNSCOUT REFER TO SPECS FOR GAUGE	ATAS INTERNATIONAL INC.	POLISHED ALUMINUM W/ CLEAR ANODIZED FINISH
DS2	4" DIA. ALUMINUM DOWNSCOUT	ATAS INTERNATIONAL INC.	POLISHED ALUMINUM W/ CLEAR ANODIZED FINISH
EP1	PAINT	BENJAMIN MOORE	COLOR: WHITE DIAMOND 9017-10 FINISH: EGGSHELL
EP5	PAINT	BENJAMIN MOORE	COLOR: WESTMINSTER GOLD 4006 FINISH: SEMI-GLOSS
FCS	"ARTISAN" FLANK LAP SIDING	JAMES HARDIE	HARRIS CREAM, FINISH: SMOOTH, 8 25" X 12"
FCST	"ARTISAN" ACCENT TRIM	JAMES HARDIE	ARCTIC WHITE, FINISH: SMOOTH, 1 1/2" THICK 6" W x 10 1/2" L
FCTB	"ARTISAN" TRIM	JAMES HARDIE	SN 7521, FINISH: SMOOTH, 1 1/2" THICK 6" W x 10 1/2" L
GI	ALUMINUM GUTTERS	032 POLISHED ALUMINUM W/ CLEAR ANODIZED FINISH	
ICE	ICE MERCHANTS	LEER	PAINT: BENJAMIN MOORE, RM OC-1 NATURAL WICKER
LAD5	METAL EXTENSION LADDER	EASTERN METAL SUPPLY	ANODIZED ALUMINUM
LGD	FLY LADDER GUARD ALG	WISCONSIN MASTERS EQUIP CO.	MILL FINISH
LIGHT	EXTERIOR LIGHT FIXTURE		RE: ELECTRICAL DRAWINGS AND DETAIL 18A7 FOR MOUNTING
MTRP2	METAL PANEL	OFL ARCHITECTURAL, LLC	PANTRY TO MATCH DOORS, EP1
QFS	ALUMINUM 6" X 18" OVERFLOW SCUPPER	ATAS INTERNATIONAL INC.	POLISHED ALUMINUM W/ CLEAR ANODIZED FINISH
OWH	METAL OVERHANG FACING	ATAS INTERNATIONAL INC.	BRAND LOK FASCIA AND RAPID LOCK COPING, COLOR: #17 BRITTE RED
OWH2	HIP ROOF FASCIA	ATAS INTERNATIONAL INC.	BRAND LOK FASCIA, COLOR: #20 BONE WHITE

ARCHITECTURAL - EXTERIOR FINISH SCHEDULE			
SYMBOL	MATERIAL	MANUFACTURER	NOTES
PAR	ALUMINUM PARAPET CAP	ATAS INTERNATIONAL INC.	COLOR TO MATCH ADJACENT TRIM
PVCT	JACOBY TRIM	ALBY	WHITE FINISH, SMOOTH, SEE DRAWINGS FOR DIMENSIONS
RF2	METAL ROOFING	ATAS INTERNATIONAL INC.	30" DUTCH SEAM (1 1/2" TG) 25' COLOR: #23 COPPERTONE
RSUP	STANDING SEAM ROOF HP CAP	ATAS INTERNATIONAL INC.	T10 MATCH METAL ROOFING
RSUP	ROOF SUPPORT & PLATE		POWDER COAT, MATCH SW #6578
SCJ	STUCCO CONTROL JOINT 3/4" WIDE		
SGN	ILLUMINATED SIGNAGE		
SOFF	MPS120 SOLID AND VENTED	ATAS INTERNATIONAL INC.	BONE WHITE
SPAN	SPANDREL GLASS, 1" INSULATED TEMPERED	VERICON	SUBDUED BRONZE
STN1	MANUFACTURED STONE VENEER	BORAL	3624TH WEST BLEND PF-8015, PROCRIT LEDGESTONE
STN2	PRE-CAST MANUFACTURED STONE	BORAL	TAUPE CSV 1375
STN6	PRE-CAST STONE CAP	ITALIAN CAST STONE	COLOR: WHITE
STOR	STOREROOM SYSTEM	KAMMEER	CLEAR ANODIZED
STUCCO	STUCCO	SENERGY	#9095 MERRILL, FINISH: SAHARA
STU2	STUCCO	SENERGY	#854 STARK WHITE, FINISH: FINE
TG	1" INSULATED TEMPERED GLASS		RE: SPECIFICATIONS
TGT	1" INSULATED TEMPERED GLASS		RE: SPECIFICATIONS

1925 Prospect Ave.
Orlando, FL 32814
P (407) 661-9100
F (407) 661-9101
www.c-p.com

Cuhaci & Peterson
Architects Engineers Planners

CLIENT NAME
WAWA
280 WEST BALTIMORE PIKE
WAWA, PENNSYLVANIA 19063

PROJECT NAME
WAWA F85L 2019.01 STORE #6351 - CMM
1004 EDGEWOOD AVE.
JACKSONVILLE, FL 32254

SHEET TITLE
EXTERIOR ELEVATIONS

No.	Description	Date	Checked
1	PRELIMINARY	09/09/2020	
2	REVISED	09/09/2020	
3	REVISED	09/09/2020	
4	REVISED	09/09/2020	
5	REVISED	09/09/2020	

PROJECT NO.
2171780

DATE
09/09/2020

DRAWN
WAWA

CHECKED
CA

A4