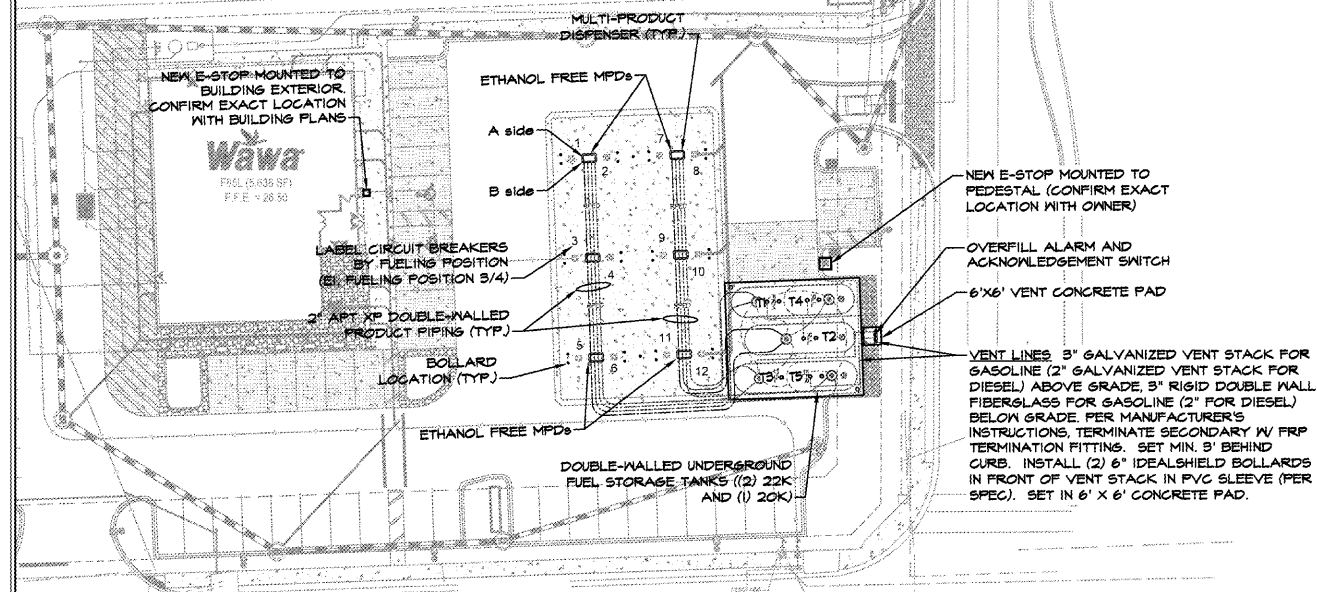
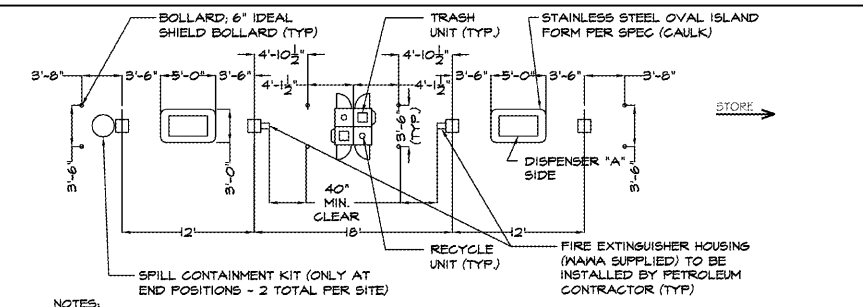


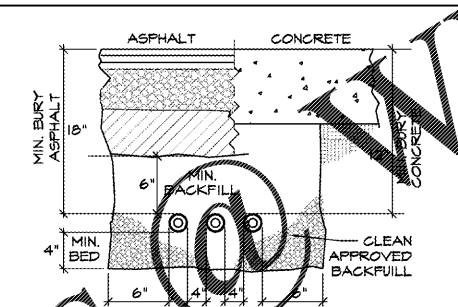
- NOTES:**
1. SITE PLAN RELATED ITEMS DISPLAYED HAVE BEEN BASED ON SITE PLANS PREPARED BY BOHLER DATED 02/11/20.
 2. FINAL LOCATIONS OF DIESEL AND ETHANOL-FREE DISPENSERS TO BE VERIFIED WITH WAMA PROJECT MANAGER. CONFIRM LOCATIONS OF 4+1'S AND 3+1'S.
 3. VERIFY ALL PIPING WITH WAMA PROJECT MANAGER PRIOR TO INSTALLATION.



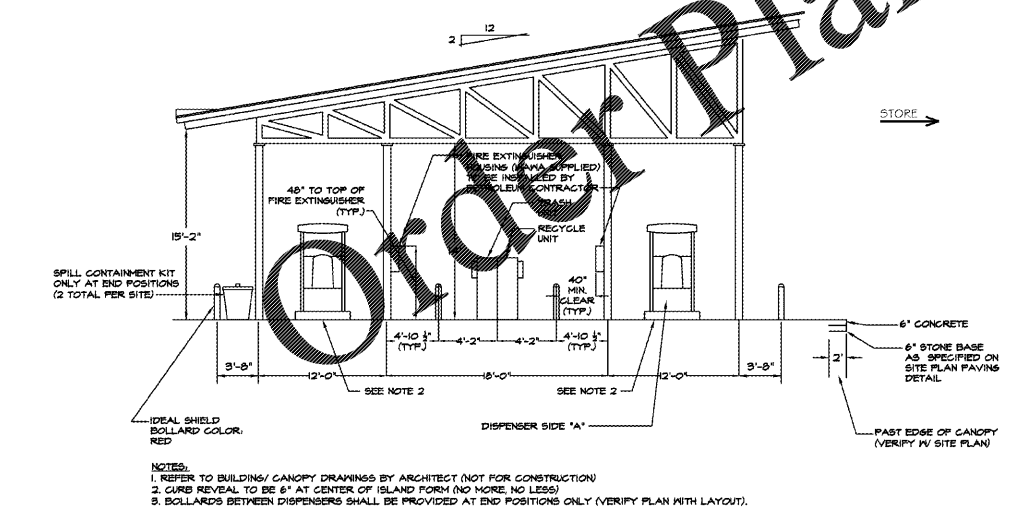
A TYPICAL PIPING RUNS
G-3 SCALE: 1" = 30'-0"



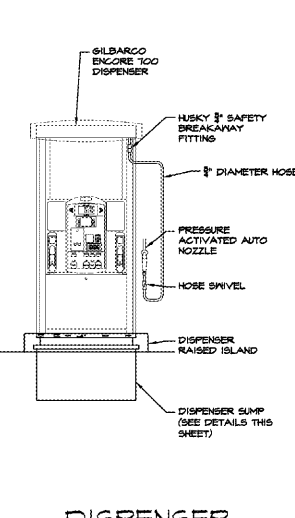
B ISLAND PLAN
G-3 SCALE: 1/8" = 1'-0"



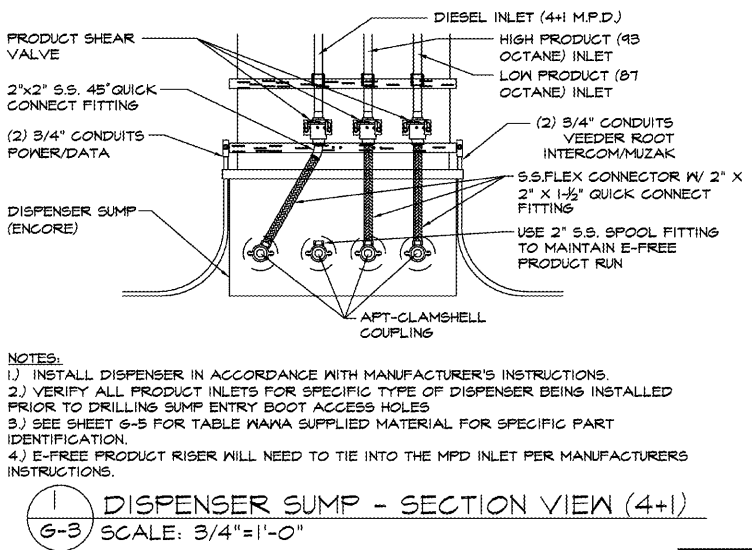
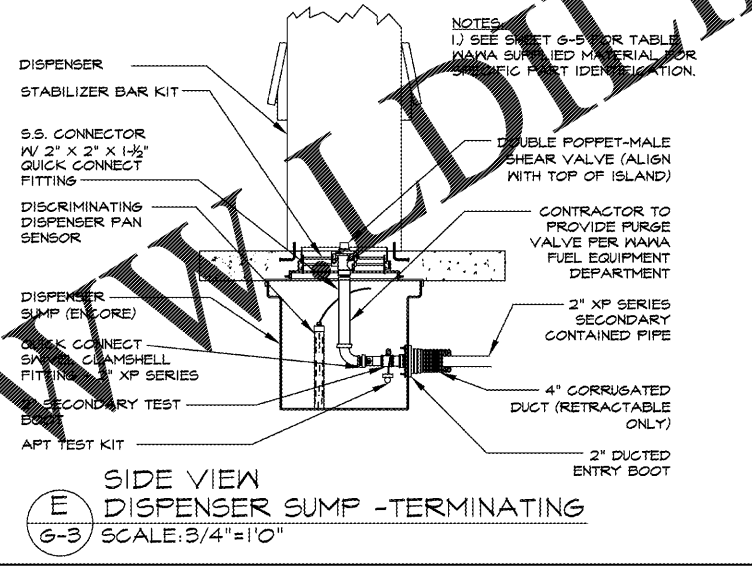
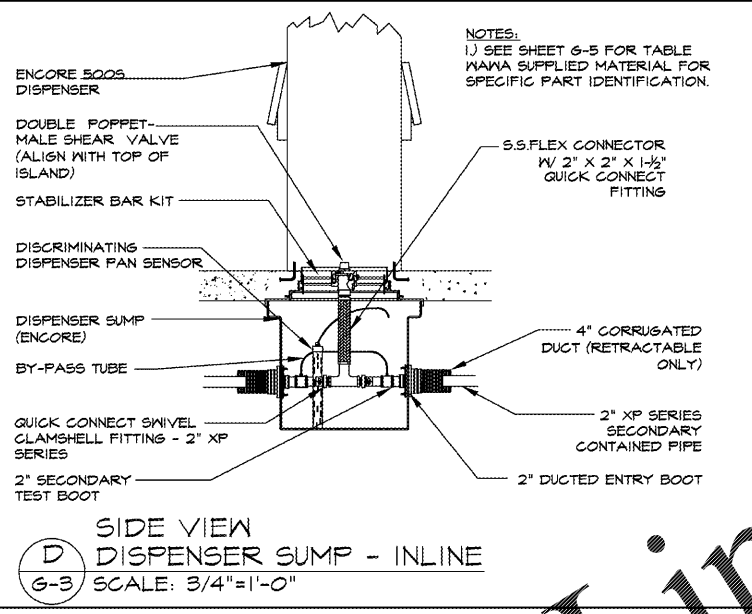
C PIPE TRENCH SECTION
G-3 NOT TO SCALE



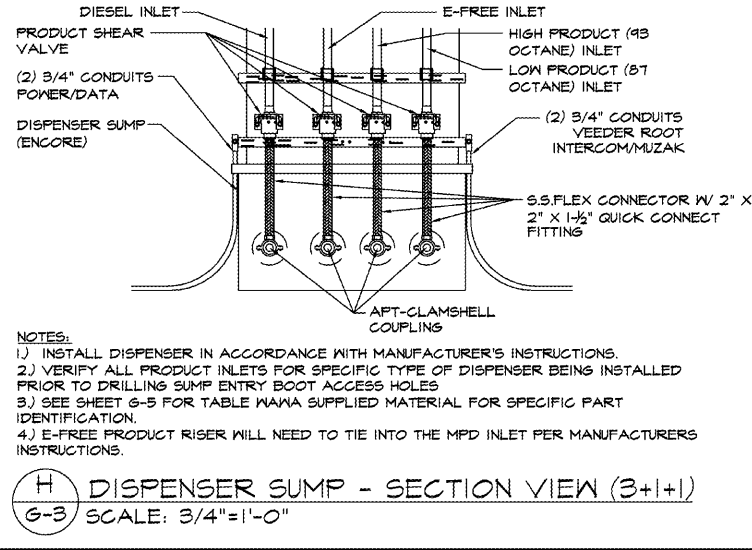
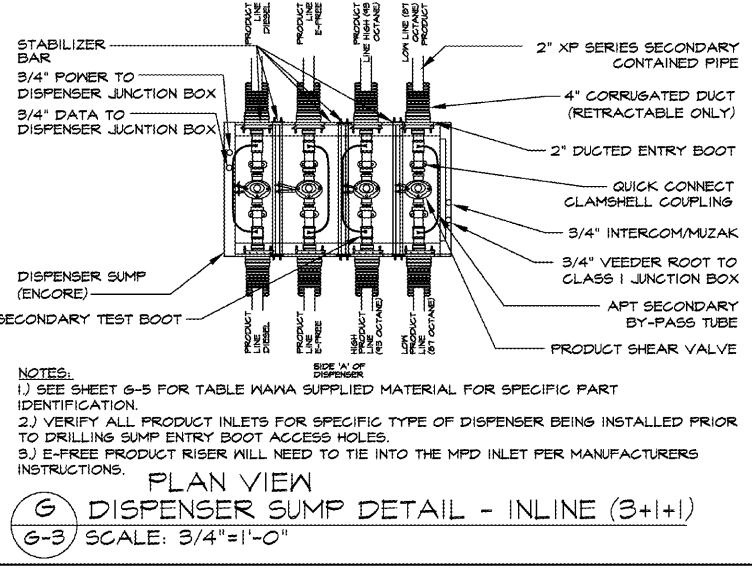
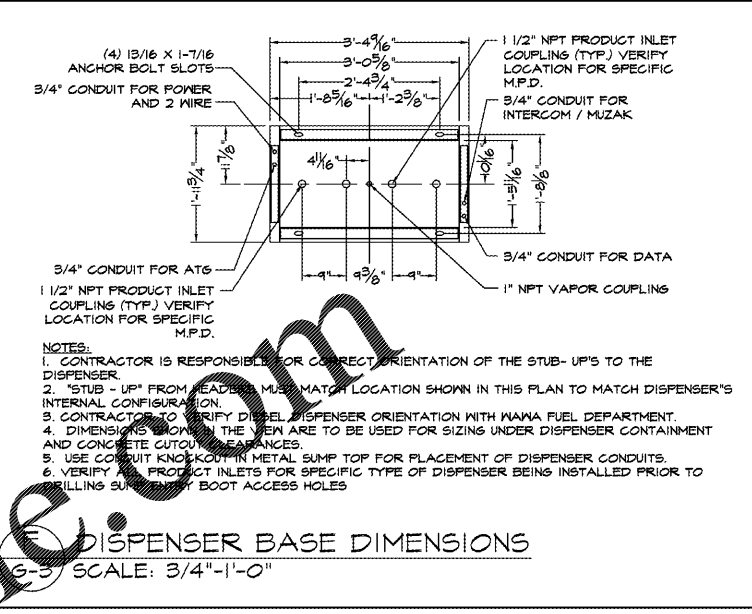
D CANOPY ELEVATION
G-3 SCALE: 1/8" = 1'-0"



E DISPENSER PROFILE
G-3 NOT TO SCALE



H DISPENSER SUMP - SECTION VIEW (4+1)
G-3 SCALE: 3/4" = 1'-0"



K DISPENSER SUMP - SECTION VIEW (3+1+1)
G-3 SCALE: 3/4" = 1'-0"

stillwater TECHNOLOGIES
1700 N. Orange Ave.
Suite 100A
Orlando, Florida 32804
(407) 206-7222
(407) 206-7223 fax
FL. Cert. of Auth. #8326
STILLWATER PROJECT #464-184

FREDERICK A. BLECKMAN
LICENSED PROFESSIONAL ENGINEER
No. 50791
STATE OF FLORIDA

DISPENSER DETAILS - STACKED 6		WAMA - 1004 N. EDGEMOOD AVE. & COMMONWEALTH (N.W. CORNER) JACKSONVILLE, DUVAL COUNTY, FL (1)-20,000 GAL. TANK W/ (2)-22,000 GAL. COMPARTMENTALIZED TANKS	
SCALE	DATE	DRAWN BY	CHECKED BY
AS NOTED	03/01/20	STILLWATER	FAB
G-3		DRAWING NO. 407.1 SHEET 03	

Wawa
7022 W. W. SUITE 200
ORLANDO, FL 32822
PHONE: 407.355.9456 FAX: 407.355.9457