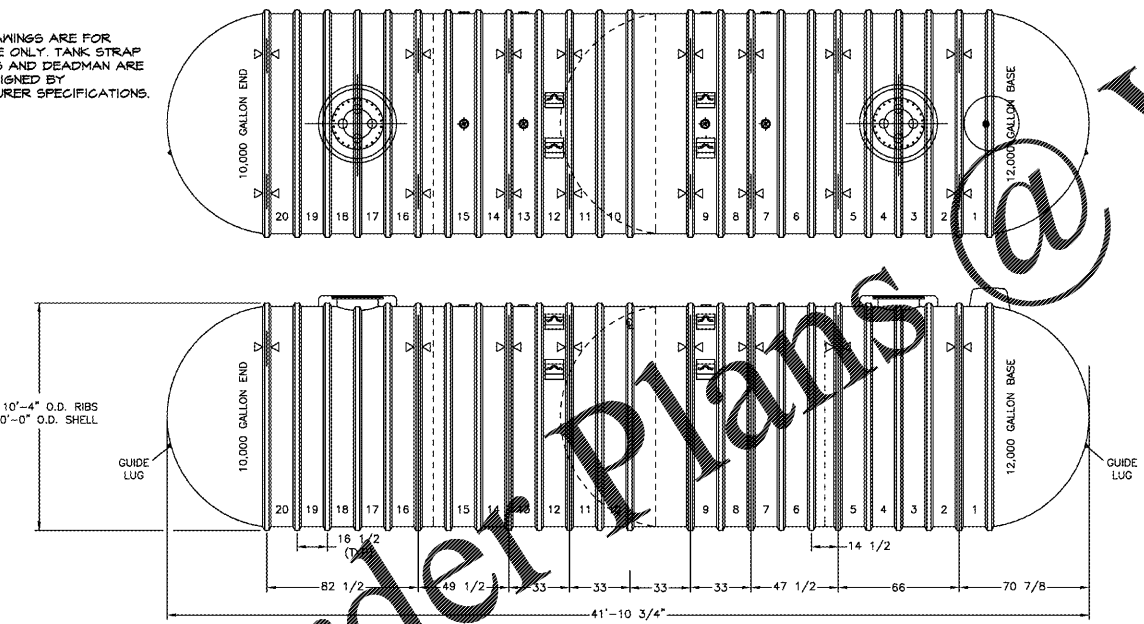


(A) TYPICAL COMPARTMENTALIZED TANK SECTION
G-2 SCALE: 1/4"=1'-0"

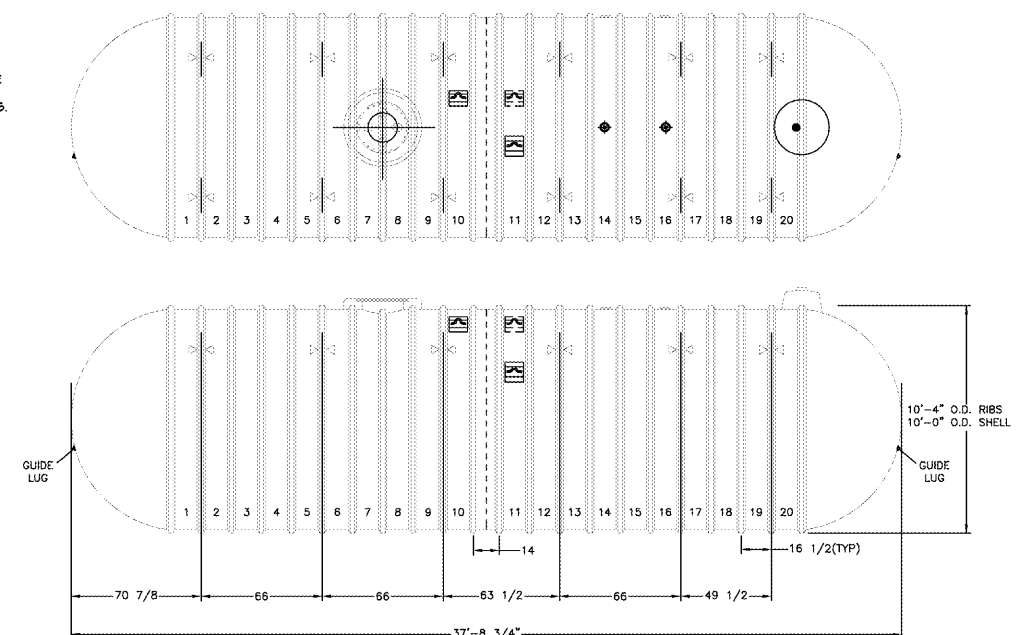
(B) TYPICAL TANK SECTION
G-2 SCALE: 1/4"=1'-0"

NOTE: THESE DRAWINGS ARE FOR REFERENCE ONLY. TANK STRAP LOCATIONS AND DEADMAN ARE TO BE DESIGNED BY MANUFACTURER SPECIFICATIONS.



(C) COMPARTMENTALIZED TANK ELEVATION SHOWING STRAP SPACING
G-2 SCALE: 1/4"=1'-0"

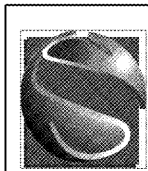
NOTE: THESE DRAWINGS ARE FOR REFERENCE ONLY. TANK STRAP LOCATIONS AND DEADMAN ARE TO BE DESIGNED BY MANUFACTURER SPECIFICATIONS.



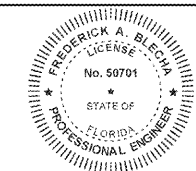
(D) TANK ELEVATION SHOWING STRAP SPACING
G-2 SCALE: 1/4"=1'-0"

Order Plans

WWW.LDILLING.COM



stillwater TECHNOLOGIES
1700 N. Orange Ave.
Suite 100A
Orlando, Florida 32804
(407) 206-7222
(407) 206-7223 fax
FL. Cert. of Auth. #8326



Date

NO.	DATE	REVISION	BY
4	03/01/20	GENERAL REVISION	D.C.V.
3	07/23/19	GENERAL REVISION	FAB
2	12/07/18	GENERAL REVISION	J.C.F.
1	09/19/14	GENERAL REVISION	D.C.V.

TANK DETAILS			
NANA - 1004 N. EDGEWOOD AVE. & COMMONWEALTH (N.W. CORNER) JACKSONVILLE, DUVAL COUNTY, FL (1)-20,000 GAL. TANK W/ (2)-22,000 GAL. COMPARTMENTALIZED TANKS)			
SCALE	DATE	DRAWN BY:	CHECKED BY:
AS NOTED	03/01/20	STILLWATER	FAB

Wawa
7022 IFC DR. SUITE 200
ORLANDO, FL 32822
PHONE: 407-539-9999 FAX: 407-539-9997

G-2
DRAWING NO.
3 OF 7
SHEET NO.