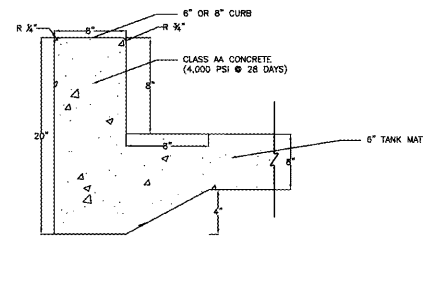
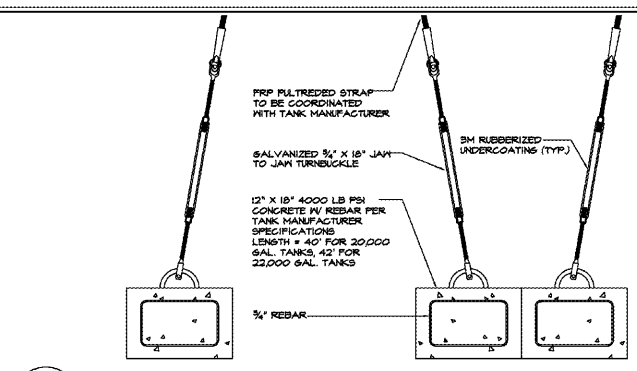


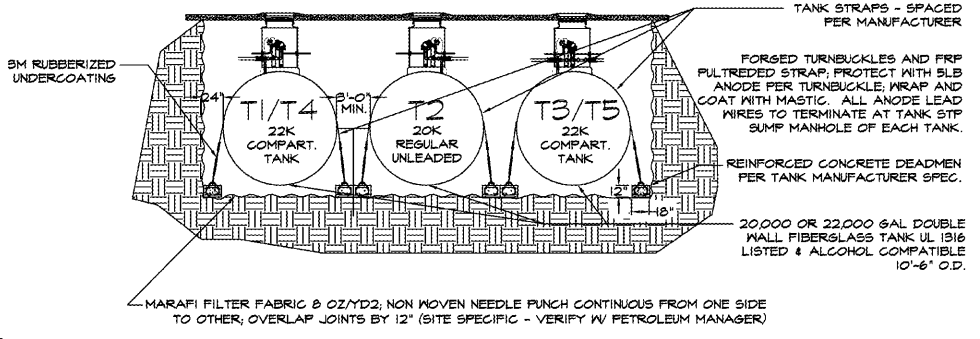
**D** TANKFIELD REINFORCING DETAIL  
G-1 SCALE: 1/4" = 1'-0"



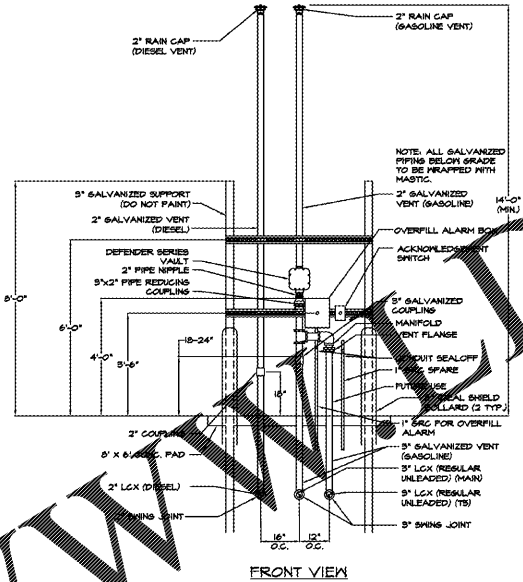
**I** MONOLITHIC CURB  
G-1 SCALE: NTS



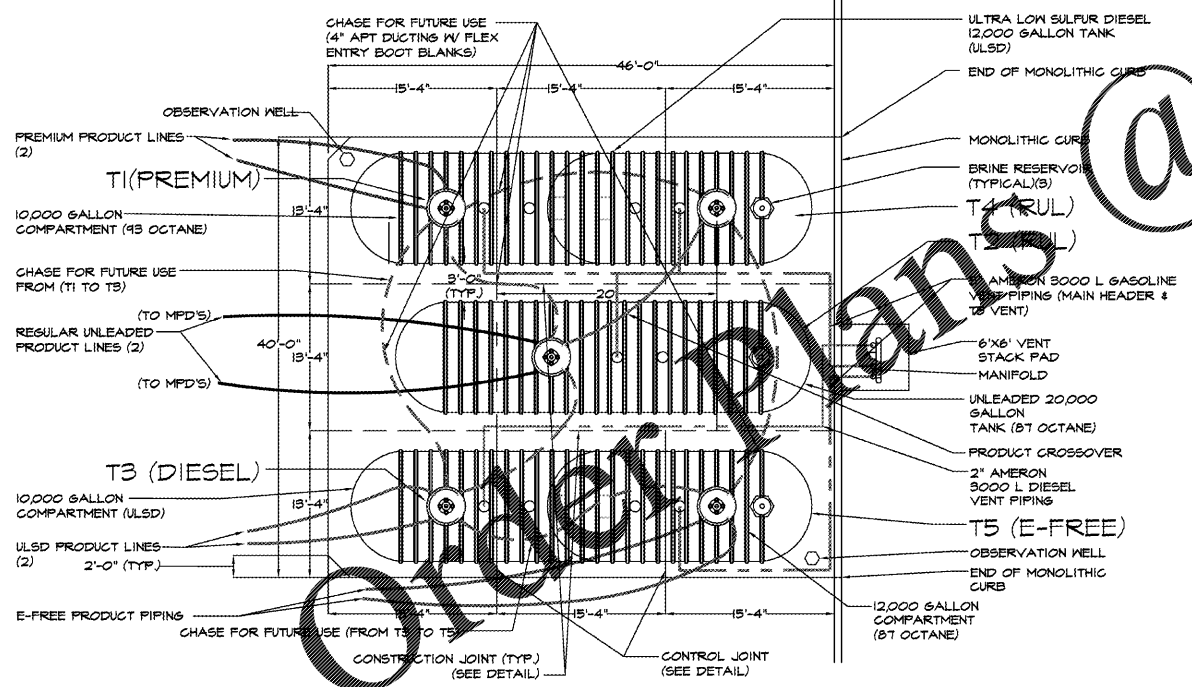
**E** TANK HOLD DOWN DETAIL  
G-1 SCALE: 1" = 1'-0"



**B** TANK BURIAL  
G-1 SCALE: 1/8" = 1'-0"

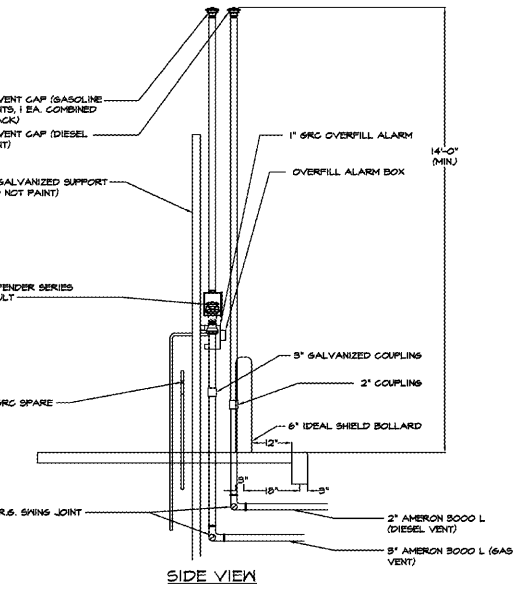


**F** VENT STACK  
G-1 SCALE: 3/8" = 1'-0"



**A** TANK FIELD LAYOUT  
G-1 SCALE: 1/8" = 1'-0"

- NOTES:
- TANK(S) SHALL BE UNDERWRITERS LABORATORY LISTED (UL-1316) AS CALLED FOR ON THE SITE SPECIFIC DRAWING OR AS DESIGNATED ON THE SUPPLEMENTAL CONDITIONS AND SHALL BE DOUBLE WALL TANKS OF FIBERGLASS REINFORCED PLASTIC (FRP). INSTALLATION OF TANKS & PIPING SHALL BE IN ACCORDANCE W/ THE LATEST EDITION OF THE INSTALLATION SPECIFICATION AS PROVIDED BY WAWA, INC. & MANUFACTURER'S INSTRUCTIONS.
  - PRIOR TO TESTING, PETROLEUM CONTRACTOR SHALL VERIFY TIGHTNESS OF MANNAY BOLTS. VERIFY BOLTS TO BE SET PER MANUFACTURERS TORQUE SETTINGS & ADJUST AS REQ. (TYP.)
  - SEE SHEET 'G-4' FOR EXACT LOCATIONS OF SUMP PIPE ENTRANCES.
  - SEE SHEET 'G-2' FOR SPECIFIC TANK DETAILS.



**G** VENT STACK  
G-1 SCALE: 3/8" = 1'-0"

XERXES® a xcl company		DEADMAN BURIAL WATER AT GRADE		Wawa	
TANK DATA		INSTALLATION		JWL	
NOM. CAP. (GAL.)	22000 (12k x 10k)	TOTAL COVER INCLUDING SOIL & TOP SLAB (FT)	4.50	03/31/14	
TYPE (SINGLE WALL=1, DW=2)	2	TOP SLAB THICKNESS (IN)	8.00		
DRY=1; WET=2	2	TOP SLAB LENGTH (FT)	48.00		
NOM. TANK DIA. (FT)	16	TOP SLAB WIDTH (FT)	13.33		
PROD. STORED (GAL.)	0	DEADMAN LING (FT)	42.00		
SPEC. GRAV. USED	1.00	DEADMAN WID (IN)	18.00		
BRNE. FIL. (GAL.)	274	DEADMAN THK (IN)	12.00		
SAFETY FACTOR		# OF 42" DIAMETER SUMPS		4	
DOWN FORCE/UP FORCE=		1.47 : 1			
TOTAL WEIGHTS					
CONCRETE WEIGHT	47070.22 LBS.	TOTAL DOWN FORCE	29562.05 LBS.		
BACKFILL WEIGHT	237121.83 LBS.	TOTAL UP FORCE	206517.43 LBS.		
TANK WEIGHT	11500.00 LBS.				
PRODUCT WEIGHT	0.00 LBS.				
WORKSHEET					
TANK DATA					
SHELL DIAMETER	16.00 FT. *	ACTUAL CAP. (GAL.)	22176.00		
SHELL LENGTH	31.90 FT. *	TANK WT. (LBS.)	11500.00		
OVER PROJECTION	5.06 FT. *	O.A.L. (FT.)	41.90		
MID POINT HEIGHT	8.83 FT. *	NUMBER OF RIBS	25.00		
COLUMN HEIGHT	15.83 FT. *	DEADMAN LING (FT)	42.00		
RIB VOLUME	2631.00 CU. IN.	DEADMAN WID (IN)	18.00		
REINFORCED CONCRETE VOLUMES (CU. FT.)					
TOP SLAB	408.89	DEADMAN	126.00		
FORCE = VOL. X 88 LBS/CF	35982.22	FORCE (LBS) = VOL. X 88 LBS/CF	11088.00		
TOP SLAB & DEADMAN FORCE		47070.22 LBS.			
BACKFILL VOLUMES (CU. FT.)					
OVER TANK SHELL	1417.39	OVER DEADMAN	1743.00		
OVER TANK DOMES	431.97	END WEDGE	359.67		
TOTAL WET VOLUME	2952.03	FORCE = VOL. X 60 LBS/CF	177121.83 LBS.		
BUOYANCY					
SHELL VOLUME	2652.62 CUBIC FT.				
DOMES VOLUME	523.60 CUBIC FT.				
RIB VOLUME	38.06 CUBIC FT.				
TOTAL VOLUME	3214.29 CUBIC FT.				
VOL. X 7.48 GAL./CU.FT.	24042.86 GALLONS				
FORCE = GAL. X 8.34 (LBS./GAL.)	200517.43 LBS.				

XERXES® a xcl company		DEADMAN BURIAL WATER AT GRADE		WAWA	
TANK DATA		INSTALLATION		JWL	
NOM. CAP. (GAL.)	20000	TOTAL COVER INCLUDING SOIL & TOP SLAB (FT)	4.50	11/10/11	
TYPE (SINGLE WALL=1, DW=2)	2	TOP SLAB THICKNESS (IN)	8.00		
DRY=1; WET=2	2	TOP SLAB LENGTH (FT)	40.00		
NOM. TANK DIA. (FT)	16	TOP SLAB WIDTH (FT)	13.00		
PROD. STORED (GAL.)	0	DEADMAN LING (FT)	40.00		
SPEC. GRAV. USED	1.00	DEADMAN WID (IN)	18.00		
BRNE. FIL. (GAL.)	194	DEADMAN THK (IN)	12.00		
SAFETY FACTOR		# OF 42" DIAMETER SUMPS		2	
DOWN FORCE/UP FORCE=		1.57 : 1			
TOTAL WEIGHTS					
CONCRETE WEIGHT	41906.67 LBS.	TOTAL DOWN FORCE	274268.36 LBS.		
BACKFILL WEIGHT	224301.69 LBS.	TOTAL UP FORCE	175216.07 LBS.		
TANK WEIGHT	8900.00 LBS.				
PRODUCT WEIGHT	0.00 LBS.				
WORKSHEET					
TANK DATA					
SHELL DIAMETER	16.00 FT. *	ACTUAL CAP. (GAL.)	19782.00		
SHELL LENGTH	27.73 FT. *	TANK WT. (LBS.)	8900.00		
OVER PROJECTION	5.06 FT. *	O.A.L. (FT.)	37.73		
MID POINT HEIGHT	8.83 FT. *	NUMBER OF RIBS	22.00		
COLUMN HEIGHT	13.83 FT. *	DEADMAN LING (FT)	40.00		
RIB VOLUME	2631.00 CU. IN.	DEADMAN WID (IN)	18.00		
REINFORCED CONCRETE VOLUMES (CU. FT.)					
TOP SLAB	346.67	DEADMAN	120.00		
FORCE = VOL. X 88 LBS/CF	30506.67	FORCE (LBS) = VOL. X 88 LBS/CF	10560.00		
TOP SLAB & DEADMAN FORCE		41066.67 LBS.			
BACKFILL VOLUMES (CU. FT.)					
OVER TANK SHELL	1286.73	OVER DEADMAN	1660.00		
OVER TANK DOMES	431.97	END WEDGE	359.67		
TOTAL WET VOLUME	3738.36	FORCE = VOL. X 60 LBS/CF	224391.69 LBS.		
BUOYANCY					
SHELL VOLUME	2251.61 CUBIC FT.				
DOMES VOLUME	523.60 CUBIC FT.				
RIB VOLUME	35.50 CUBIC FT.				
TOTAL VOLUME	2808.71 CUBIC FT.				
VOL. X 7.48 GAL./CU.FT.	21009.12 GALLONS				
FORCE = GAL. X 8.34 (LBS./GAL.)	175216.07 LBS.				

**H** BUOYANCY CALCULATIONS  
G-1 SCALE: N.T.S.

**stillwater TECHNOLOGIES**  
1700 N. Orange Ave.  
Suite 100A  
Orlando, Florida 32804  
(407) 206-7222  
(407) 206-7223 fax  
FL. Cert. of Auth. #8326

FREDERICK A. BLECK  
LICENSE  
No. 50701  
STATE OF  
FLORIDA  
PROFESSIONAL ENGINEER

**TANK DETAILS**  
WAWA - 1004 N. EDGEWOOD AVE. &  
COMMONWEALTH (N.W. CORNER)  
JACKSONVILLE, DUVAL COUNTY, FL  
(1)-20,000 GAL. TANK W/ (2)-22,000 GAL.  
COMPARTMENTALIZED TANKS

SCALE	DATE	DRAWN BY	CHECKED BY
AS NOTED	03/01/20	STILLWATER	FAB

Wawa  
7022 P.C. DR., SUITE 200  
ORLANDO, FL 32822  
PHONE: 407-953-9958 FAX: 407-953-9907

G-1  
DRAWING NO.  
2 OF 7  
SHEET NO.