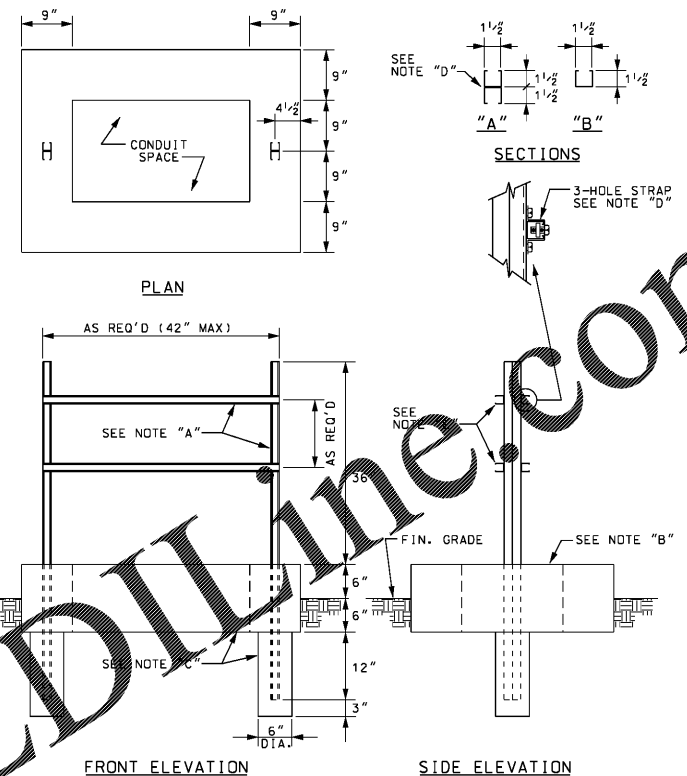


SCHEDULE PANELBOARD MDP										
MAINS		VOLTAGE	PHASE	WIRE	MOUNTING					
600	MLO	277/480	3	4	RACK MOUNTED					
CIR #	TRIP/POLE	KVA	DESCRIPTION	CONNECTED LOAD KVA			DESCRIPTION	KVA	TRIP/POLE	CIR #
1	200/3	23.50	PANEL DMB	82.2	PH B	PH C	PANEL DCB	59.70	400/3	2
3	-	23.50		85.9				62.40	-	4
5	-	11.00				73.4		62.40	-	6
7	/3		SPACE	0.0			SPACE		/3	8
9	-			0.0					-	10
11	-			0.0					-	12
13	/3		SPACE	0.0			SPACE		/3	14
15	-			0.0					-	16
17	-			0.0					-	18
19	/3		SPACE	0.0			SURGE PROTECTION		40/3	14
15	-			0.0					-	16
17	-			0.0					-	18
19	/3		SPACE	0.0					-	18
15	-			0.0					-	16
17	-			0.0					-	18
MIN. BREAKER AIC		25,000		82.2	85.9	73.4	TOTAL CONNECTED LOAD	242		
NOTES:				82.2	85.9	73.4	TOTAL DEMAND LOAD	242		

SCHEDULE PANELBOARD DMB										
MAINS		VOLTAGE	PHASE	WIRE	MOUNTING					
200	MB	277/480	3	4	SURFACE MOUNTED					
CIR #	TRIP/POLE	KVA	DESCRIPTION	CONNECTED LOAD KVA			DESCRIPTION	KVA	TRIP/POLE	CIR #
1	100/3	11.00	IRRIGATION WELL	23.5			PANEL MB	12.50	100/2	2
3	-	11.00	(30 HP)	23.5			MINI-POWER CENTER - 25KVA	12.50	-	4
5	-	11.00				11.0	SPACE		/1	6
7	/3		SPACE	0.0			SPACE		/3	8
9	-			0.0					-	10
11	-			0.0					-	12
13	/3		SPACE	0.0			SURGE PROTECTION		40/3	14
15	-			0.0					-	16
17	-			0.0					-	18
MIN. BREAKER AIC		25,000		23.5	23.5	11.0	TOTAL CONNECTED LOAD	58		
NOTES:				23.5	23.5	11.0	TOTAL DEMAND LOAD	58		

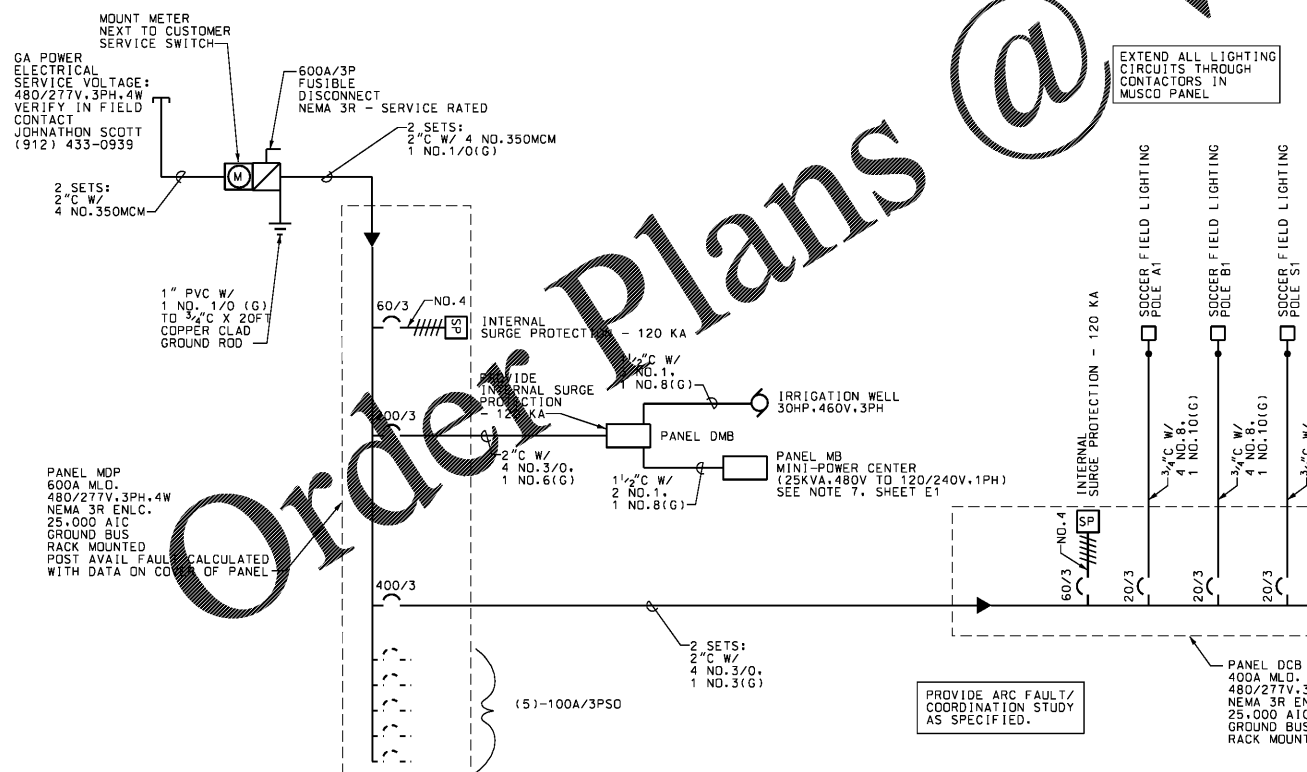
SCHEDULE PANELBOARD DCB										
MAINS		VOLTAGE	PHASE	WIRE	MOUNTING					
400	MLO	277/480	3	4	RACK MOUNTED					
CIR #	TRIP/POLE	KVA	DESCRIPTION	CONNECTED LOAD KVA			DESCRIPTION	KVA	TRIP/POLE	CIR #
1	20/3	4.43	SOCCER FIELD LIGHTING	8.9	PH B	PH C	SOCCER FIELD LIGHTING	4.43	20/3	2
3	-	4.43	POLE A1	8.9			POLE B1	4.43	-	4
5	-	4.43				8.9		4.43	-	6
7	20/3	4.43	SOCCER FIELD LIGHTING	8.9			SOCCER FIELD LIGHTING	4.43	20/3	8
9	-	4.43	POLE S1	8.9			POLE S2	4.43	-	10
11	-	4.43				8.9		4.43	-	12
13	20/3	2.52	BASEBALL FIELD LIGHTING	5.0			BASEBALL FIELD LIGHTING	2.52	20/3	14
15	-	2.52	POLE A1	5.0			POLE A2	2.52	-	16
17	-	2.52				5.0		2.52	-	18
19	20/3	3.90	BASEBALL FIELD LIGHTING	7.8			BASEBALL FIELD LIGHTING	3.90	20/3	20
21	-	3.90	POLE S2	7.8			POLE B1	3.90	-	22
23	-	3.90				7.8		3.90	-	24
25	20/3	3.90	BASEBALL FIELD LIGHTING	7.8			BASEBALL FIELD LIGHTING	3.90	20/3	26
27	-	3.90	POLE C1	7.8			POLE C2	3.90	-	28
29	-	3.90				7.8		3.90	-	30
31	20/3	1.60	WALKWAY LIGHTING	2.6			PARKING LOT LIGHTING	0.97	20/3	32
33	-	1.60	POLE A1, A2, B1, S1, S2	2.6			POLE S1, S2	0.97	-	34
35	-	1.60				2.6		0.97	-	36
37	20/3	2.75	POWER-LINE COMM CONNECTION	2.8			SPACE		/2	38
39	-	2.75		2.8					-	40
41	-	2.75				2.8			/2	42
43	/3		SPACE	0.0					-	44
45	-			3.8			PANEL CB	3.75	30/2	46
47	-			3.8			MINI-POWER CENTER - 7.5KVA	3.75	-	48
49	/3		SPACE	15.0			FUTURE GROUP SHELTER	15.00	100/3	50
51	-			15.0				15.00	-	52
53	-			15.0				15.00	-	54
MIN. BREAKER AIC		25,000		58.7	62.4	62.4	TOTAL CONNECTED LOAD	184		
NOTES:				58.7	62.4	62.4	TOTAL DEMAND LOAD	184		

SCHEDULE PANELBOARD CB										
MAINS		VOLTAGE	PHASE	WIRE	MOUNTING					
30	MB	120/240	1	3	RACK MOUNTED					
CIR #	TRIP/POLE	KVA	DESCRIPTION	CONNECTED LOAD KVA			DESCRIPTION	KVA	TRIP/POLE	CIR #
1	20/1	0.80	SCOREBOARD	1.2			DISCOUNT RECEPTACLE	0.80	20/1	1
3	20/1	0.60	BUGOUT RECEPTACLE	0.6			SPARE	0.60	20/1	4
5	20/1	0.60	SCOREBOARD	1.4			TESTING CABINET	0.80	20/1	6
7	20/1		SPARE	0.5			MUSCO CABLE DRIVER	0.50	20/1	8
9	20/1		SPARE	0.3			RECEPTACLE	0.30	20/1	10
11	20/1		SPARE	0.0			SPARE	0.00	20/1	12
MIN. BREAKER AIC		10,000		2.5	2.5	2.5	TOTAL CONNECTED LOAD	4		
NOTES: NOTE 1, SHEET E1				2.5	2.5	2.5	TOTAL DEMAND LOAD	3.04		



- NOTES:
- ALL RACKS TO BE CONSTRUCTED OF 12 GA. HOT DIPPED GALVANIZED STEEL CHANNEL OF CROSS SECTIONS SHOWN. CHANNEL DIMENSIONS ARE NOMINAL. ALL CUTS AND DRILLED HOLES TO BE PAINTED WITH ZINC RICH PAINT TO PREVENT RUSTING.
 - CONCRETE BASE TO BE SLOPED OUTWARD.
 - POST HOLES AND CONCRETE BASE SHALL BE MONOLITHIC POUR. FILL CONDUIT SPACE WITH CRUSHED COARSE STONE.
 - BACK TO BACK CHANNELS (SECTION A) SHALL BE FACTORY FABRICATED (SPOT WELDED) 3" D.C. FIELDS WELDS ARE NOT PERMISSIBLE. ALL FITTINGS, STRAPS, NUTS AND BOLTS SHALL BE FOR USE WITH THE SPECIFIC CHANNEL USED. FIELD FABRICATED FITTINGS NOT PERMISSIBLE.
 - PROVIDE TWO OR THREE CROSS MEMBERS AS REQUIRED FOR MOUNTING ELECTRICAL EQUIPMENT WITH DIFFERENT MOUNTING HOLE CENTERS.

2 FREE-STANDING EQUIPMENT RACK
SCALE: NONE



1 ONE LINE DIAGRAM
SCALE: NONE

CADD PLOT
11-AUG-2020
09:36
bmoye

CHATHAM ENGINEERING
109 Park of Commerce Drive, Suite 6 Savannah, Georgia 31405
PHONE (912) 238-2400 FAX (912) 238-2412
This drawing and all parts of it are the property of Chatham Engineering Company, LLC. No reproduction or use of any part of this drawing without the written consent of Chatham Engineering Company, LLC is permitted.
© 2015

No.	Date	Description	By

CHARLIE BROOKS PARK
PHASE II
SAVANNAH
GEORGIA



Sheet Title
SCHEDULES, DETAIL & ONE LINE DIAGRAM

Job No. 20031.00
Drawn B.P.M.
Checked P.M.
Date 11-AUG-2020 Sheet No. **E2**

NOT RELEASED FOR CONSTRUCTION