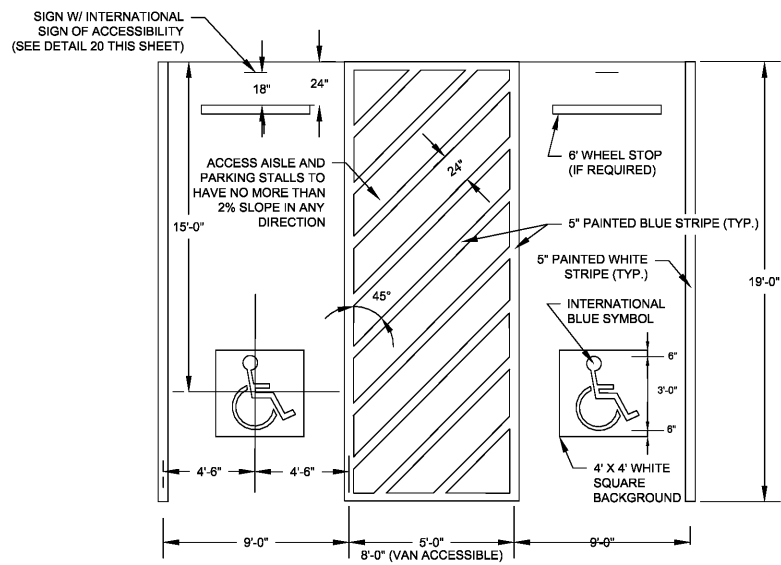


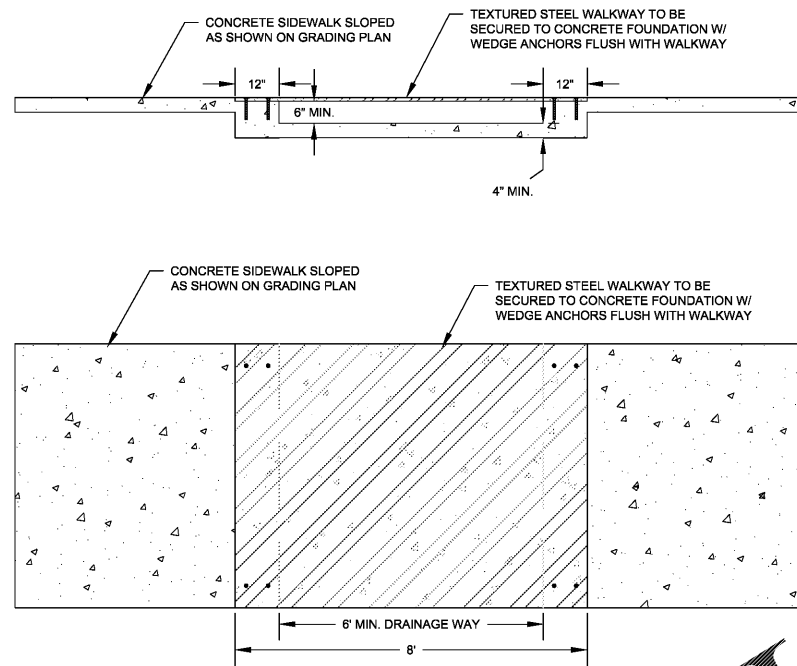
13



ADA HANDICAP PARKING SPACE STRIPING DETAIL

SCALE: N.T.S.

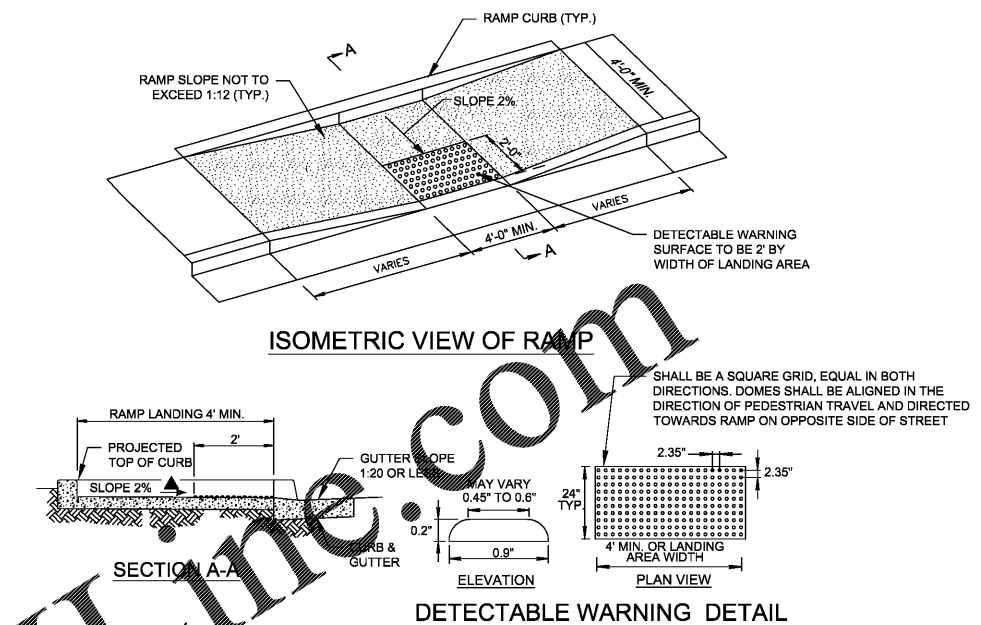
14



ELEVATED SIDEWALK W/ TEXTURED STEEL WALKWAY

SCALE: N.T.S.

15



ISOMETRIC VIEW OF RAMP

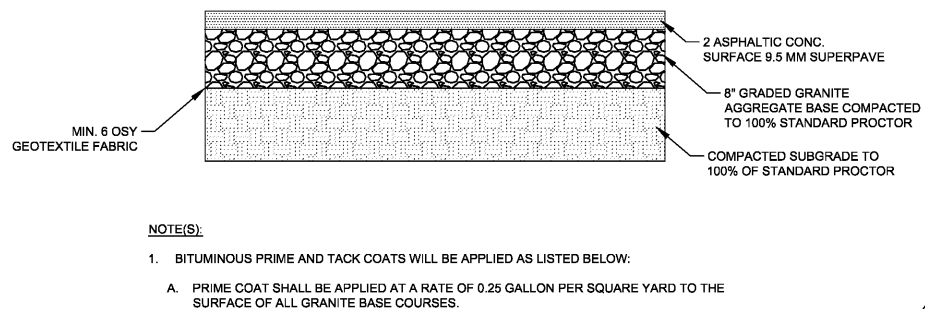
DETECTABLE WARNING DETAIL

- NOTES:
1. SURFACES SHALL MEET THE GUIDELINES OF THE ADA STANDARDS FOR ACCESSIBILITY, APPENDIX A, PART 36.
 2. THE SLOPE OF THE GUTTER MUST NOT EXCEED 1:20 ADJACENT TO THE RAMP.
 3. DETECTABLE WARNINGS SHALL CONSIST OF RAISED TRUNCATED DOMES WITH A DIAMETER OF NOMINAL 0.9 INCHES, A HEIGHT OF NOMINAL 0.2 INCHES AND A CENTER TO CENTER SPACING OF NOMINAL 2.35 INCHES AND SHALL CONTRAST VISUALLY WITH ADJOINING SURFACES. IF THE SIDEWALK AND RAMP ARE CONSTRUCTED OF CONCRETE, THE WARNING AREA SHALL BE RED BRICK IN COLOR. IF THE SIDEWALK AND RAMP ARE CONSTRUCTED OF RED BRICK, THE WARNING AREA SHALL BE GREY IN COLOR. THE COLOR USED TO PROVIDE CONTRAST SHALL BE AN INTEGRAL PART OF THE WALKING SURFACE.

HANDICAP RAMP

SCALE: N.T.S.

16

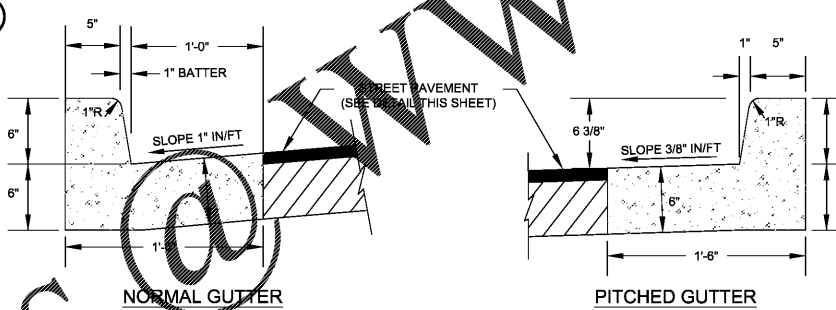


BITUMINOUS PAVEMENT SECTION

NOT TO SCALE

- NOTE(S):
1. BITUMINOUS PRIME AND TACK COATS WILL BE APPLIED AS LISTED BELOW:
 - A. PRIME COAT SHALL BE APPLIED AT A RATE OF 0.25 GALLON PER SQUARE YARD TO THE SURFACE OF ALL GRANITE BASE COURSES.

18

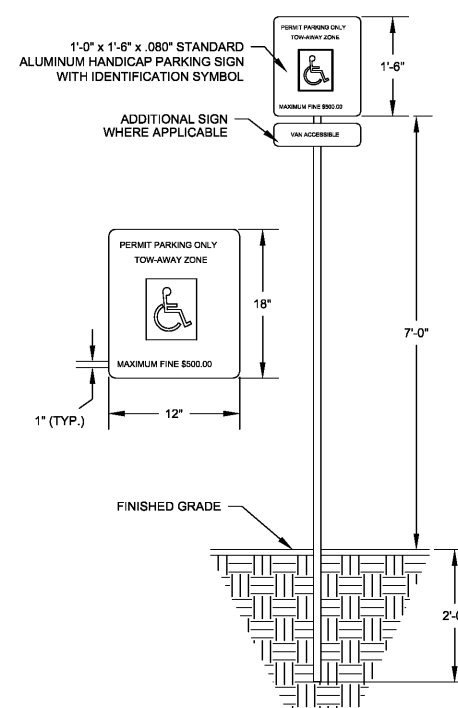


CONCRETE CURB AND GUTTER DETAILS

SCALE: N.T.S.

- NOTES:
1. BASE COMPACTION UNDER CURB TO BE 98% (ASTM D698).
 2. CONTRACTION JOINTS SHALL BE LOCATED AT INTERVALS NO GREATER THAN 10' AND SHALL BE SAW CUT NO LATER THAN 24 HOURS AFTER THE POUR.

20

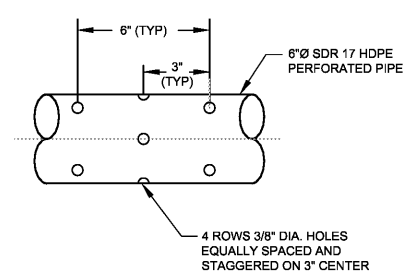


HANDICAP PARKING SIGN DETAIL

SCALE: N.T.S.

NOTE: SIGNAGE SHALL CONFORM TO ALL APPLICABLE FEDERAL AND STATE CODES AND REGULATIONS.

21

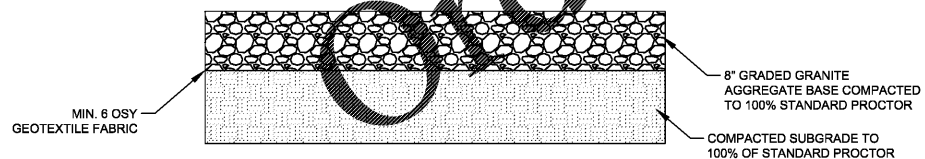


PERFORATED LFG COLLECTION PIPE

SCALE: N.T.S.

FOR BIDDING PURPOSES ONLY NOT FOR CONSTRUCTION

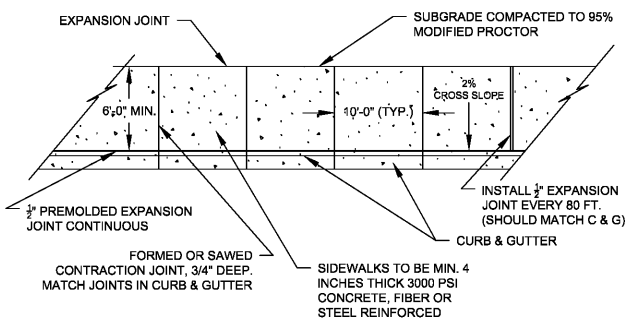
17



GRADED AGGREGATE BASE (GAB) ACCESS ROAD SECTION

NOT TO SCALE

19



SIDEWALK AND WALKWAY DETAILS

SCALE: N.T.S.

- NOTE(S):
1. CONTRACTION JOINTS SHOULD BE FORMED OR SAWED COINCIDENT WITH THE 10' JOINTS IN THE CURB.

MISCELLANEOUS DETAILS

CONSTRUCTION PLANS
CHARLIE BROOKS PARK - PHASE II
 SR 367 WILMINGTON ISLAND PH 2 - 025-058D(L)
 FOR
 CHATHAM COUNTY BOARD OF COMMISSIONERS
 CHATHAM COUNTY, GEORGIA

HHNT
 HODGES, HARBIN,
 NEWBERRY & TRIBBLE, INC.
 Consulting Engineers

(912) 298-0230 (PHONE)
 (912) 298-0234 (FAX)
 17 PARK OF COMMERCE
 BOULEVARD, SUITE 110
 SAVANNAH, GEORGIA 31405

PROJ. NO.	1705-038-01	DWG.	CB-PH2-14-D3
SCALE	NOT TO SCALE	SHEET 14 OF 19	
DATE	AUGUST 2020		